

*Seedstock Plus South Missouri
Bull & Female Sale*

March 22, 2025

12 noon

*Joplin Regional Stockyards
Carthage, Missouri*

**ALL BULLS & REGISTERED FEMALES SELL WITH
GENOMIC-ENHANCED EPDS!**

ALL ARE SIRE VERIFIED, COAT COLOR & POLLED TESTED!



Bid & Buy at:
DVAuction

Working Together for Industry Excellence

S+

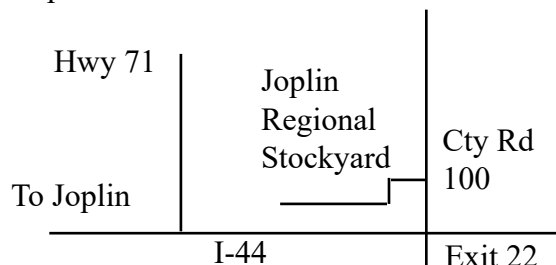
Seedstock Plus



Seedstock Plus South Missouri Bull & Female Sale

Saturday March 22, 2025 * 12 noon
Joplin Regional Stockyards, Carthage, MO

Map to Sale Site:



Directions to Sale Site:

Take Exit 22 (Cty Rd 100) off of I-44 and turn north - then take the frontage road to the Stockyards entrance.

Travel:

Commercial Air Service is available to Kansas City, MO which is 175 miles north. There are regional airports at both Springfield and Joplin. Call if you need transportation to or from an airport!

Accommodations:

Super 8 Motel, Carthage MO
417-359-9000

Quality Inn Hotel
Carthage, MO
417-359-5900

Days Inn, Carthage, MO
417-358-3900

After Sale Care:

We will be happy to care for your bull/s until you are ready for them. The buyer will be responsible for feed at cost until delivery.

Seedstock Plus Customer Service Programs

Guaranteed Sight-Unseen Purchases

Free Delivery on bulls
or \$100 Discount if picked up sale day

Bull Warranty Program

Bulls are guaranteed for Fertility, Structure and Disposition. For an additional 5% of purchase price, bull can be warrantied for injury and death for 6 months.

Marketing Assistance Program

- Feeder Calves
- Replacement Females
- Bred Heifers, Cows and Pairs

If you need additional information on a particular program, call us at the Seedstock Plus office.

Health

Seedstock Plus Bulls have been tested and found negative for PI BVD. We recommend producers purchase only bulls that are negative for Persistent Infected BVD Virus. **Bulls are also tested NEGATIVE for Trichomoniasis.** This is not mandated by the state of Missouri yet however, several surrounding states are requiring it and we felt it best to be on top of that. The bulls have been vaccinated and boosted with IBR, BVD, PI-3, BRSV-4, Blackleg & Vibrio Lepto. They have been on a regular de-worming schedule since weaning. All the bulls have passed a breeding soundness exam that includes live semen evaluation, palpation and scrotal measurement. All the necessary health tests have been performed and interstate health papers will be available sale day.

Seedstock Plus South Missouri Bull & Female Sale

March 22, 2025 * 12 noon

Joplin Regional Stockyards, Carthage, MO

John Burbank cell: 660-734-1165

Matt Burbank cell: 660-734-2739

Lanny Ford cell: 870-703-4345

Sale Day Office (Laurie): 660-734-2446

Jeremy Anstine, Kingsville Livestock Auctioneer..... 816-716-9288

Tucker Anstine, ring service.....816-345-0860

Doug Fager, ring service..... 913-645-9497

Selling: 145 - Balancer & Gelbvieh 18 Month Old & Yearling Bulls

26 Registered Open Heifers

15 - Commercial Spring Breds/ Pairs & 30 Open Heifers

About the Bulls:

- Prior to delivery to the test, bulls are sorted and culled at home
- Bulls are brought in to be fed together at a Regional Development Center
- Bulls are grown with their longevity in mind - fed for 3# ADG with high roughage ration
- Bulls are culled again prior to catalog for poor gain, conformation, disposition, etc.
- All bulls have passed a thorough breeding soundness exam prior to the sale
- All bulls are tested Negative for BVD -PI3 & Trichomoniasis
- All bulls have genomically enhanced EPDs and are SIRE VERIFIED.
- All Gelbvieh & Balancer bulls are Polled and Coat Color tested.
- The bulls are Guaranteed 'Free' of the currently known Genetic Defects we can test for.
- EPD's updated weekly so there will be updated EPDs, Tenderness scores, Ultrasound, frame scores & scrotal measurements will be available on a supplement sheet on sale day.



We are planning to video each of the bulls on March 10 - 11th - after they have been semen checked and clipped. The videos will be posted during that week and will be available to view by March 15th. If you would like to see a video of a specific bull and have access to high speed internet - you can go to our website OR www.dvauction.com and download the videos by the bull's LOT #.

EPDs ARE CURRENT AS OF 2/4/2025

Internet Bidding:

The sale will be available to watch and bid real time at www.dvauction.com

1. Create an account under the 'create new account' tab.
2. Apply for bidding by clicking 'apply for bidding' in the upper left corner of the screen. **AT LEAST 24 HOURS PRIOR TO THE SALE!**
3. Tune in to the sale to make your purchases!

Working Together for Industry Excellence



Seedstock Plus

Seedstock Plus, LLC

John E. Burbank, CEO

18864 Kepler Dr.

St. Catharine, MO 64628

Toll Free: 877-486-1160 or

cell: 660-734-1165

email: john@seedstockplus.com

www.seedstockplus.com



Industry Commitment

The bulls included in this offering come from producers who are in the Seedstock business for the long haul. They raise the kind of bulls that produce the type of feeder calves that feed well and grade and yield on the rail. These are the kind of bulls that produce the replacement heifers that make our commercial customers so successful. Feel free to contact any of the members listed below if you have questions.

4 W Farms

Contact: Brycen Wiedmer
Troy, KS
816-262-4172

Hebron Ranch

Contact: Daniel Bell
Olaton, KY
270-274-1749

Narrow Gate Cattle

Contact: Larry Kendall
Osage Beach, MO
573-216-9719

Springhaven Farm LLC

Contact: Ken Anderson
Belton, MO
816-506-7947

Bryce Family Farms LLC

Contact: Bryce Cripps
Columbia, MO
573-808-4742

Horizon Farms

Contact: Ed Laverentz
Cheney, KS
316-990-5088

Norwood Gelbvieh

Contact: Jerry Norwood
Carthage, MO
417-850-1023

Stuecken Brothers

Contact: Derek Stuecken
Freeburg, MO
573-690-8543

Burbank Cattle Company

Contact: Matt Burbank
St. Catharine, MO
660-734-2739

JGP Gelbvieh

Contact: Josh Phillips
Lathrop, MO
816-914-6053

Pecan Ridge Gelbvieh

Contact: Jaron Franks
Albertville, AL
256-426-3782

Wannabe Stock Farm

Contact: Gregory Summers
Smithville, MO
816-392-5242

Burns Gelbvieh

Contact: Jesse Burns
Covington, OH
937-606-4861

KZ Cattle Company

Contact: Kerry Zillinger
Columbus, KS
785-543-7614

Pederson Gelbvieh

Contact: David Pederson
Buffalo, MN
320-333-2014

Wolf Gelbvieh

Contact: Travis Wolf
Gothenburg, NE
308-529-3733

Chapuis Cattle Company

Contact: Charlie Chapuis
Louisiana, MO
573-754-0079

L & L Gelbvieh

Contact: Wes Lasher
Smithland, KY
270-564-2315

Reinert Family Farm

Contact: John Reinert
Billings, MO
417-224-7204

Zimmerman Gelbvieh

Contact: Tyler Zimmerman
Harper, KS
620-243-2876

Darnell Farms

Contact: Bobby Darnell
Indian Mound, TN
931-624-5174

Lawman Farms

Contact: Kathleen Merritt
Columbia, MO
419-439-3730

Rex Wood Farms

Contact: Rex Wood
Meadville, MO
660-247-2577

Duck River Gelbvieh

Contact: David Bates
Duck River, TN
931-209-5053

Little Sioux Gelbvieh

Contact: Jack Welle
Milford, IA
712-251-4641

RM Cattle

Contact: Ryan Grable
Troy, KS
785-850-0686

Flint Hills Gelbvieh

Contact: Ronald Schultz
Alma, KS
785-617-0033

Meng Farms Cattle Co.

Contact: Doug Meng
Troy, KS
913-370-0334

Rockin' U Ranch

Contact: Stan Utley
Richmond, MO
816-719-3793

Gatson Gelbvieh

Contact: Adam Gatson
Vandalia, MO
573-721-6482

Mulroy Farms LLC

Contact: Tim Mulroy
Mayetta, KS
785-640-6401

Sandy Knoll Farm Gelbvieh

Contact: Brian L Dunn
St. John, KS
620-786-4039

About The Catalog:

Color possibilities:
 Black - known red carrier
 Homo Black - known homozygous black

Polled Status:
 Polled: Single Polled
 Scurred
 Homo Polled

Balancer

COLOR

POLLED

540

EPD'S: All Bulls have an LD Profile and 'Genomic Enhanced EPDs'.

Breed Percentile Ranking: This number corresponds to the EPD directly above it to compare EPDs within breed.

PFX NAME

GRAND SIRE
 SIRE
 GRAND DAM
 MAT GRAND SIRE
 DAM
 MAT GRAND DAM

REG #:	REG #:
BD:	B DATE
BW:	BW
WW:	Adj WW

Actual Data:
 Registration #
 Birthdate
 Actual BW
 Adjusted WW

CE	BW	WW	YW	MK	TM	CEM	ST	DOC	CW	REA	MB	\$C	FPI	EPI
BREED PERCENTILE RANKING PER EPD														
Breed %														
OWNER:														

Breed Make-up on Balancer bulls. Abbreviations include: AN = Black Angus AR = Red Angus GV = Gelbvieh XX = unknown

Expected Progeny Differences 'EPD' Definitions

The American Gelbvieh Association transitioned to the BOLT system for EPD calculations in the fall of 2018. The American Angus Association had already been using this system for the previous year. There are 12 beef breed Associations in collaboration to form IGS (International Genetic Solutions) which brings a new, streamlined method for incorporating genomic results into the EPDs. This incorporates data and updates EPDs on a weekly basis.

EPD Definitions:

CE: Calving Ease – A number that predicts the average difference in ease with which a sire's calves will be born when he is bred to first calf heifers – **higher numbers indicate greater calving-ease.**

BW: Birth Weight, **WW:** Weaning Weight & **YW:** Yearling Weight – All are expressed in pounds, this shows the expected number of pounds a bull or female will add or subtract from their progeny's birthweight, weaning weight and yearling weight respectively.

MK: Milk: expressed in pounds of weaning weight that a female will add/subtract or that a bull's daughters will have.

TM: Total Maternal - expresses the combination of what a sire transmits to his daughters in the form of genetics for growth and genetics for milking ability. Or that same trait directly applied to a female and expressed in pounds.

CEM: Calving Ease Maternal: this EPD predicts how well an animal's daughters will calve with a higher number being easier calving.

ST: Stayability: Predicts the genetic difference, in terms of percent probability, that a bull's daughters will stay productive within a herd to at least six year of age.

DOC: is expressed as a difference in yearling cattle temperament, with a higher value indicating more favorable docility. It predicts the average difference of progeny from a sire in comparison with another sire's calves. In herds where temperament problems are not an issue, this expected difference would not be realized.

CW: Carcass Weight: expressed in pounds of carcass weight adjusted to a constant fat endpoint.

REA: Rib Eye Area: expressed in square inches of rib eye muscle area adjusted to a constant fat endpoint.

MB: Marbling: expressed in degrees of marbling score, a determinant of USDA Quality Grade. Value is adjusted to a constant fat endpoint.

\$Cow: Represents the genetic value in dollars of profit of an animal when retained as a replacement female relative to other animals in the herd. A higher number represents more profitable genetics for maternal productivity.

FPI: An economic selection index designed to aid producers in selecting sires whose progeny will perform in the feedlot and are sold on grade and yield.

EPI: An economic selection index developed to aid producers in selecting for more feed efficient cattle that still have acceptable amounts of gain.



We are proud to announce that moving forward, all Seedstock Plus bulls will be developed by Burbank Bull Development LLC in St. Catharine, MO. Matt & Cammie Burbank, with the help of their kids, will handle the daily feed & care of all Seedstock Plus bulls, on-line females and growing bulls from weaning until graduating into the Seedstock Plus development test.

We would like to thank the crew at RJM Farms in Holden, MO for many years of excellent work on behalf of the Seedstock Plus group developing the bulls for our program. The entire Anstine family, Tim & Janet Evert and others in the Holden area are friends, customers and have contributed to the past success of Seedstock Plus. We will continue to support those relationships in the Warrensburg, Holden and Kingsville area but admit that we are excited to bring the development of the Seedstock Plus bulls home.

We would encourage anyone to come visit the new and improved facility that will accommodate all we do here at home and all the needs of the Seedstock Plus program. Although we did not install the GrowSafe system (due to cost & labor issues), we have made some significant improvements to the bull development process such as large pasture turn-out paddocks for the bulls. Our family is committed to the future success of the Seedstock Plus program.

Bull Warranty Program Insurance for your bull!

Several years ago, Seedstock Plus instituted an insurance program for new bull purchases in an effort to protect our customers from a catastrophic loss if something should happen to a bull within the first breeding season. This program covers any and all possible things that a bull can do to himself in the first six months of ownership. The warranty costs **5%** of the purchase price and should you have to use it, we try to either bring you a comparable replacement or find a suitable loaner bull to get the cows bred if you are still in the midst of breeding season. If something happens to him towards the end of the season, we still cover that but often will either take the bull back and issue a credit towards your next purchase or have you ship the bull, keep the salvage funds and issue a credit for the balance. Any way you look at it - we get you back even! We've warrantied bulls that have been hit by lightning, hit by trains, drowned, broken various body parts or been injured in such a way that he won't ever be sound to breed cows again.

There are very few affordable commercial insurance policies that will cover a bull for loss of use. Farm policies will cover 'acts of God' (so do we!) but again, an injury is just your tough luck. The **5%** of purchase price cost is a small price if something happens to your bull within that first 6 months!

We appreciate the fact that you've put your trust in us to present you with a bull that has a good disposition, good feet and legs and will breed cows - we feel those things should be 'on us' and you don't need insurance if you have a problem in one of these areas - you just need to let us know and we'll take care of it. We try to catch every possible problem prior to the sale but things happen and bulls are bulls.... But if your bull gets injured or dies, he needs to be insured! Take a good look at what the warranty can offer you and be sure to tell us at the settlement table that you want to insure your bull!

About Balancer® Bulls

The Profitable Blend of Angus and Gelbvieh Genetics!

Balancer hybrids offer a simple and powerful way to maintain hybrid vigor and the proper blend of British and Continental genetics in your cowherd without complicated crossbreeding systems. Registered Balancer hybrids combine the Angus advantages of calving ease, moderate mature size, marbling and convenience traits with Gelbvieh growth, muscle leanness, fertility and unequaled pounds of calf per cow exposed in a single animal. And, documented research proves that Balancer hybrids offer the same consistency as their purebred parents with improved uniformity of composition. Plus, Balancers are registered seedstock, complete with documented parentage and EPD's. Balancer bulls are registered as Gelbvieh and Angus or Red Angus hybrids with a minimum of 75% of the pedigree documented and with both the sire and the dam recorded with their respective association. There are also registered Hybrid bulls in this category, the difference being a varying percentage of Gelbvieh as well as a mixture of other breeds. These bulls can be used in a similar way as the Balancer bulls as long as the buyer is aware of the actual breed makeup as close as can be known.

Both the Balancer & Hybrid bulls' EPD's are figured on the Gelbvieh base and can be compared to the Gelbvieh bulls. The average EPD's for Balancer bulls as of 2/4/2025 are:

CE: 13 BW: -0.5 WW: 73 YW: 114 Milk: 23 TM: 60 CEM: 7 ST: 15
DOC: 12 CW: 38 REA: .51 MB: .38 \$C: 108.48 FPI: 83.05 EPI: 116.67

Balancer Homo Black Homo Polled

309

TMGC SB Cactus 212L

TMMW DESTINATION 82Y
BTBR SAGUARO 8111F ET
JEB BCC MISS OBJECTIVE 41W

JOB DANELL TD CHICO LOCO 28Y
TMGC SB MS LOCO 275G
SB ERICA IN FOCUS 8144

REG #:	1587990
BD:	9/1/2023
BW:	65
WW:	645

CE	BW	WW	YW	MK	TM	CEM	ST	DOC	CW	REA	MB	\$C	FPI	EPI
16	0.3	91	148	20	65	10	13	7	60	.60	.51	95.97	96.64	186.04
BREED PERCENTILE RANKING PER EPD														
15	70	3	3	80	25	10	75	>95	4	35	20	80	5	4
Breed %			56GV 44AN			OWNER:			Stuecken Bros					

Balancer Homo Black Homo Polled

310

TMMW Mr Derecho 110L

DBRG WHIRLWIND 735E
VRT LAZY TV DERECHO J660
VRT LAZY TV WINNIE G133

JJNR MONEY TALKS B43C
TMMW MISS MONEY TALKS 241F
TMMW MISS NEVADA 119C

REG #:	1591269
BD:	9/5/2023
BW:	72
WW:	554

CE	BW	WW	YW	MK	TM	CEM	ST	DOC	CW	REA	MB	\$C	FPI	EPI
15	-1.7	67	110	24	57	9	12	13	25	.00	.55	87.33	84.99	195.55
BREED PERCENTILE RANKING PER EPD														
25	25	75	60	45	70	15	85	30	90	>95	15	90	40	3
Breed %			44GV 56AN			OWNER:			Mulroy Farms LLC					

Balancer Homo Black Homo Polled

307

RGCC Powercat 392L

JOSH MR DITKA 624E
NCGG G10
NGCC NG GRACIE E105

DMI 72E
RGCC LADY CAT 198J
RGCC LADY CAT 611D

REG #:	1579012
BD:	8/22/2023
BW:	68
WW:	536

CE	BW	WW	YW	MK	TM	CEM	ST	DOC	CW	REA	MB	\$C	FPI	EPI
14	0.0	72	112	29	66	7	13	11	43	1.02	.35	98.16	82.99	154.33
BREED PERCENTILE RANKING PER EPD														
40	60	55	55	10	20	45	75	35	1	55	75	50	50	20
Breed %			54GV 44AN 2XX			OWNER:			RM Cattle					

Balancer Homo Black Homo Polled

311

BRNS 376L

DLW LIFELINE 5065E
TMMW MR LIFELINE 63H
TMMW MISS NEVADA 54B

GLAG ADKINS JACKPOT 906W
SKF DUNN'S MISS JACKPOT 586C
BLD DUNNS MISS FUDGE R595

REG #:	1613501
BD:	9/13/2023
BW:	78
WW:	517

CE	BW	WW	YW	MK	TM	CEM	ST	DOC	CW	REA	MB	\$C	FPI	EPI
13	0.9	69	104	18	53	6	14	11	13	.57	.61	108.28	84.36	150.9
BREED PERCENTILE RANKING PER EPD														
50	80	65	75	90	85	65	60	75	>95	40	10	50	45	>95
Breed %			74GV 26AN			OWNER:			Burns Gelbvieh					

Balancer Homo Black Homo Polled

308

TMMW Mr Exponential 101L

K C F BENNETT EXPONENTIAL
DBRG MR EXPONENTIAL 1158J
DBRG MS EXCLUSIVE 5179C ET

HPR ROYAL BISMARCK 0504
TMMW MISS BISMARCK 168A
TMMW GRANITES MISS GOV 156Y

REG #:	1591258
BD:	8/29/2023
BW:	56
WW:	588

CE	BW	WW	YW	MK	TM	CEM	ST	DOC	CW	REA	MB	\$C	FPI	EPI
21	-2.5	80	130	21	62	12	15	12	64	.79	.52	109.95	95.64	118.58
BREED PERCENTILE RANKING PER EPD														
1	15	25	20	75	40	1	45	50	2	10	20	50	10	50
Breed %			50GV 50AN			OWNER:			Mulroy Farms LLC					

Genomic-Enhanced EPDs

All of the bulls in the Seedstock Plus Program are DNA tested to be able to provide the most accurate, DNA -Enhanced EPDs as part of our commitment to bring you the best data so you can make the most informed decision and get the best bull for your program. Let us know if you need any help understanding any of the data.

BALANCER BULLS

Balancer Homo Black Homo Polled **312**

TMMW Mr Derecho 124L

DBRG WHIRLWIND 735E
VRT LAZY TV DERECHO J660
VRT LAZY TV WINNIE G133

SPFR LAND CRUISER
TMMW MISS FORTUNE 245E
TMMW MISS BEECH JET 108B

REG #:	1591282
BD:	9/13/2023
BW:	76
WW:	586

CE	BW	WW	YW	MK	TM	CEM	ST	DOC	CW	REA	MB	\$C	FPI	EPI
12	-0.3	70	108	27	62	6	12	10	14	.55	.12	88.84	75.53	161.26
BREED PERCENTILE RANKING PER EPD														
65	55	65	65	20	40	65	85	90	>95	45	95	90	85	15
Breed %			75GV 25AN	OWNER:		Mulroy Farms LLC								

Balancer Homo Black Homo Polled **315**

RFFM Homegrown Highlife 96L

JKGF DITKA C85
LRSF HIGH LIFE H64
SINK MS EDISON 319A

TMMW MR GRANITE 180A
TMMW MISS GRANITE 148D
TMMW MISS KRUGER 155A

REG #:	1579277
BD:	9/16/2023
BW:	84
WW:	609

CE	BW	WW	YW	MK	TM	CEM	ST	DOC	CW	REA	MB	\$C	FPI	EPI
12	-1.0	68	103	16	50	6	17	15	45	.72	.09	115.25	72.11	115.77
BREED PERCENTILE RANKING PER EPD														
65	40	70	75	>95	95	65	20	5	30	15	>95	35	95	50
Breed %			64GV 36AN	OWNER:		Reinert Family Farm								

Balancer Homo Black Homo Polled **313**

TMGC SB Legend 258L

G A R HIGH SECURITY JSF
IAND DUNN'S SAFE CRACKER 090J
SKF DUNNS MISS JACKPOT 572C

GSRT DEACON 908D
TMGC SB DIVINE 144H
TMGC SB LADY DI 207F

REG #:	1588032
BD:	9/13/2023
BW:	69
WW:	690

CE	BW	WW	YW	MK	TM	CEM	ST	DOC	CW	REA	MB	\$C	FPI	EPI
17	-0.5	86	134	25	68	9	17	13	46	.61	.59	127.33	97.00	158.62
BREED PERCENTILE RANKING PER EPD														
10	50	10	15	35	15	20	30	25	30	15	15	5	15	15
Breed %			75GV 25AN	OWNER:		Stuecken Bros								

Balancer Homo Black Homo Polled **316**

TMMW Mr Treasure 137L

MGR TREASURE
TAU FORTUNE 8H ET
TAU MS GUNNISON 106R 3147A

JGPG TRAEGER 744E
TMMW MISS TRAEGER 137H
TMMW MISS BISMARCK 79C

REG #:	1591295
BD:	9/17/2023
BW:	71
WW:	572

CE	BW	WW	YW	MK	TM	CEM	ST	DOC	CW	REA	MB	\$C	FPI	EPI
12	-0.6	74	114	17	55	9	17	12	40	.55	.34	112.13	81.84	99.13
BREED PERCENTILE RANKING PER EPD														
65	45	45	50	95	80	15	20	50	45	45	60	45	55	70
Breed %			53GV 47AN	OWNER:		Mulroy Farms LLC								

Balancer Homo Black Homo Polled **314**

TMGC SB Civil War 169L

V A R DISCOVERY 2240
JKGF CIVIL WAR E92
JKGF LOTTIE C92

BTBR SAGUARO 8111F ET
TMGC SB VERBENA 149J
TMGC SB ARIAL 190G

REG #:	1587951
BD:	9/14/2023
BW:	82
WW:	744

CE	BW	WW	YW	MK	TM	CEM	ST	DOC	CW	REA	MB	\$C	FPI	EPI
9	0.7	90	145	22	66	5	17	11	46	.42	.46	127.36	92.72	190.95
BREED PERCENTILE RANKING PER EPD														
95	75	4	4	65	20	80	20	75	25	70	30	15	15	3
Breed %			58GV 42AN	OWNER:		Stuecken Bros								

Balancer Homo Black Homo Polled **317**

TMGC SB Cactus 178L

TMMW DESTINATION 82Y
BTBR SAGUARO 8111F ET
JEB BCC MISS OBJECTIVE 41W

TMGC SB SILENT NIGHTS 2005B
TMGC SB SILENCE 209E
TMGC SB PEARL 137A

REG #:	1587960
BD:	9/19/2023
BW:	64
WW:	725

CE	BW	WW	YW	MK	TM	CEM	ST	DOC	CW	REA	MB	\$C	FPI	EPI
18	-4.0	71	106	25	61	11	19	14	25	.36	.50	127.96	89.30	141.40
BREED PERCENTILE RANKING PER EPD														
4	4	60	70	35	45	3	5	15	90	80	25	15	20	25
Breed %			56GV 44AN	OWNER:		Stuecken Bros								



Balancer Homo Black Homo Polled **318**

TMMW Mr Exponential 152L

K C F BENNETT EXPONENTIAL
DBRG MR EXPONENTIAL 1158J
DBRG MS EXCLUSIVE 5179C ET

TAU MR KRUGERRAND 70M 130P
TMMW MISS KRUGER 155A
TMMW BLK SANDY GOVENOR 7029T

REG #:	1605689
BD:	9/23/2023
BW:	68
WW:	533

CE	BW	WW	YW	MK	TM	CEM	ST	DOC	CW	REA	MB	\$C	FPI	EPI
17	-4.3	54	87	19	47	9	14	14	18	.32	.46	100.61	79.16	95.21
BREED PERCENTILE RANKING PER EPD														
10	3	>95	>95	85	>95	15	60	15	>95	85	30	70	70	75
Breed %			63GV 37AN	OWNER:		Mulroy Farms LLC								

BALANCER BULLS

Balancer Homo Black Homo Polled **319**
JEB BCC Black Balance 35L

SKF BURNS BANK HEIST 874F
 SKF DUNN'S BANK HEIST 231J
 SKF DUNNS MISS SANDY 911W

NORG TANK G310
 TMMW MISS TANK 171J
 TMMW MISS BISMARCK 127B

REG #:	1593698
BD:	9/24/2023
BW:	64
WW:	514

CE	BW	WW	YW	MK	TM	CEM	ST	DOC	CW	REA	MB	\$C	FPI	EPI
13	-1.1	63	98	23	55	8	13	14	31	.40	.22	88.52	73.72	20.97

BREED PERCENTILE RANKING PER EPD														
50	35	90	85	55	80	30	75	15	75	75	85	90	90	>95
Breed %	49GV 48AN 3AR				OWNER:	Burbank Cattle Company								



Balancer Homo Black Homo Polled **320**
TMMW Mr Treasure 154L

MGR TREASURE
 TAU FORTUNE 8H ET
 TAU MS GUNNISON 106R 3147A

STG MR MEDINA 51Y14
 TMMW MISS MIF 194B
 TMMW KRUGERS MS WONDERFUL 84Y

REG #:	1591311
BD:	9/24/2023
BW:	75
WW:	678

CE	BW	WW	YW	MK	TM	CEM	ST	DOC	CW	REA	MB	\$C	FPI	EPI
14	-2.2	64	97	22	55	9	18	13	16	.24	.28	116.31	76.83	103.69

BREED PERCENTILE RANKING PER EPD														
40	20	85	85	65	80	15	10	30	>95	95	75	35	80	65
Breed %	56GV 44AN				OWNER:	Mulroy Farms LLC								

Balancer Homo Black Homo Polled **323**
HRZN L125

WFA FLYING H MR PRO 26G
 SKF DUNN'S COMPLETE PRO 214J
 SKF DUNNS MISS WHARTON 619D

GMF FORTUNE 616D
 HRZN J253
 HRZN F127

REG #:	1599578
BD:	10/1/2023
BW:	77
WW:	525

CE	BW	WW	YW	MK	TM	CEM	ST	DOC	CW	REA	MB	\$C	FPI	EPI
15	-2.6	58	97	26	55	9	16	4	22	.47	.58	112.49	82.65	198.16

BREED PERCENTILE RANKING PER EPD														
25	15	95	85	25	80	15	30	>95	95	60	15	45	50	2
Breed %	59GV 41AN				OWNER:	Horizon Farms								

Balancer Homo Black Homo Polled **321**
TMMW Mr Treasure 159L

MGR TREASURE
 TAU FORTUNE 8H ET
 TAU MS GUNNISON 106R 3147A

HPR ROYAL BISMARCK 0504
 TMMW MISS BISMARCK 61B
 TMMW GRANITES MS NITE LADY 34Z

REG #:	1591318
BD:	9/26/2023
BW:	76
WW:	629

CE	BW	WW	YW	MK	TM	CEM	ST	DOC	CW	REA	MB	\$C	FPI	EPI
12	-1.5	58	90	23	53	8	21	14	35	.35	.44	132.67	75.81	68.29

BREED PERCENTILE RANKING PER EPD														
65	30	95	95	55	85	30	1	15	60	80	35	10	85	95
Breed %	50GV 50AN				OWNER:	Mulroy Farms LLC								

Balancer Homo Black Homo Polled **324**
TMMW Mr Bank Heist 174L

SKF BURNS BANK HEIST 874F
 SKF DUNNS BANK HEIST 231J
 SKF DUNNS MISS ZANDER 6D67

PHS PROHART FATAL ATTRACTION 833F
 TMMW MISS FATAL ATTRACTION 177J
 TMMW MISS GRANITE 18A

REG #:	1591332
BD:	10/2/2023
BW:	69
WW:	660

CE	BW	WW	YW	MK	TM	CEM	ST	DOC	CW	REA	MB	\$C	FPI	EPI
14	-1.1	65	103	25	57	8	16	12	12	.39	.45	106.07	81.84	18.26

BREED PERCENTILE RANKING PER EPD														
40	35	80	75	35	70	30	30	50	>95	75	35	55	55	>95
Breed %	75GV 22AN 3AR				OWNER:	Mulroy Farms LLC								

Balancer Homo Black Homo Polled **322**
TMMW Mr Hashtag 166L

DCH HILLE D453
 GLM HASHTAG# H11
 GLM W55

SCHIEFELBEIN ALLIED 514
 JEB BCC MS ALLIED H027 ET
 JEB BCC MISS BALANCE 62A

REG #:	1591324
BD:	9/28/2023
BW:	71
WW:	605

CE	BW	WW	YW	MK	TM	CEM	ST	DOC	CW	REA	MB	\$C	FPI	EPI
15	0.4	85	133	24	67	9	14	14	50	.89	.16	108.58	84.55	186.98

BREED PERCENTILE RANKING PER EPD														
25	70	10	15	45	15	15	60	15	15	3	95	50	40	4
Breed %	63GV 37AN				OWNER:	Mulroy Farms LLC								

Balancer Homo Black Homo Polled **325**
TMGC SB Barcelona 241L

CCRO CAROLINA LEVERAGE 3214A
 TMGC SB FORMULA 12E
 TMGC SB DANIELLE 07C

TMGC SB SILENT NIGHTS 2005B
 TMGC SB SILENCE 264E
 TMGC SB VENUS 173B

REG #:	1588014
BD:	10/3/2023
BW:	78
WW:	710

CE	BW	WW	YW	MK	TM	CEM	ST	DOC	CW	REA	MB	\$C	FPI	EPI
14	-1.4	72	111	24	60	9	17	12	37	.88	.47	120.86	86.36	144.57

BREED PERCENTILE RANKING PER EPD														
40	30	55	55	45	50	15	20	50	55	4	30	25	35	25
Breed %	70GV 23AN 6AR				OWNER:	Stuecken Bros								

BALANCER BULLS



Balancer Homo Black Homo Polled **329**
TMGC SB Barcelona 244L

CCRO CAROLINA LEVERAGE 3214A
 TMGC SB FORMULA 12E
 TMGC SB DANIELLE 07C
 DVE DAVIDSON JACKPOT 74Z
 MZNR C936
 MZNR SUSAN W836

REG #:	1588017
BD:	10/7/2023
BW:	79
WW:	651

CE	BW	WW	YW	MK	TM	CEM	ST	DOC	CW	REA	MB	\$C	FPI	EPI
16	-0.3	82	128	26	67	10	14	13	35	1.02	.53	106.51	94.34	179.49
BREED PERCENTILE RANKING PER EPD														
15	55	20	20	25	15	10	60	30	60	1	20	55	10	5
Breed %			74GV 26AN			OWNER:			Stuecken Bros					

Balancer Homo Black Homo Polled **326**
TMMW Mr Overtime 178L

BTBR SAGUARO 8111F ET
 JEB BCC BLACK BALANCE J101 ET
 JEB BCC MISS OVERTIME 54C
 HPR ROYAL BISMARCK 0504
 TMMW MISS BISMARCK 84A
 TMMW GRANITES MISS SALLY 66Y

REG #:	1591336
BD:	10/4/2023
BW:	75
WW:	701

CE	BW	WW	YW	MK	TM	CEM	ST	DOC	CW	REA	MB	\$C	FPI	EPI
14	-2.3	72	101	23	59	9	21	14	32	.21	.56	141.24	87.56	109.69
BREED PERCENTILE RANKING PER EPD														
40	15	55	80	55	55	15	1	15	70	95	15	4	30	60
Breed %			51GV 47AN 2AR			OWNER:			Mulroy Farms LLC					

Balancer Homo Black Homo Polled **330**
TMGC SB Legend 289L

G A R HIGH SECURITY JSF
 IAND DUNN'S SAFE CRACKER 090J
 SKF DUNNS MISS JACKPOT 572C
 BTBR SAGUARO 8111F ET
 TMGC SB VERBENA 155H
 TMGC SB MS OPTIMUS 208E

REG #:	1588062
BD:	10/7/2023
BW:	78
WW:	702

CE	BW	WW	YW	MK	TM	CEM	ST	DOC	CW	REA	MB	\$C	FPI	EPI
13	-0.1	88	142	24	67	7	18	15	62	.55	.72	132.07	99.56	184.13
BREED PERCENTILE RANKING PER EPD														
50	60	10	10	45	15	45	10	5	3	45	3	10	3	4
Breed %			53GV 47AN			OWNER:			Stuecken Bros					

Balancer Homo Black Homo Polled **327**
LAW Mark 353L

DLW TPG JACKPOT 7551B ET
 BWF BRANDYWINE GUNNAR 942G
 BWF 208Z
 SITZ STELLAR 726D
 FHCC EVERGREEN 0404
 FHCC EVERGREEN 6526

REG #:	1583813
BD:	10/7/2023
BW:	65
WW:	627

CE	BW	WW	YW	MK	TM	CEM	ST	DOC	CW	REA	MB	\$C	FPI	EPI
14	-2.1	62	101	24	56	8	20	11	30	.21	.83		89.37	
BREED PERCENTILE RANKING PER EPD														
40	20	90	80	45	75	30	3	75	75	95	1		20	
Breed %			50GV 50AN			OWNER:			Lawman Farms					

Balancer Homo Black Homo Polled **331**
TMGC SB Cactus 200L

TMMW DESTINATION 82Y
 BTBR SAGUARO 8111F ET
 JEB BCC MISS OBJECTIVE 41W
 CONNEALY IMPRESSION
 TMGC SB IMPRESSION OF ELAINE 73F ET
 DLW MS ELAINE 20005Z ET

REG #:	1587978
BD:	10/8/2023
BW:	70
WW:	731

CE	BW	WW	YW	MK	TM	CEM	ST	DOC	CW	REA	MB	\$C	FPI	EPI
16	-1.4	84	133	22	64	11	19	12	43	.61	.51	132.73	95.12	157.77
BREED PERCENTILE RANKING PER EPD														
15	30	15	15	65	30	3	5	50	35	30	20	10	10	15
Breed %			56GV 44AN			OWNER:			Stuecken Bros					

Balancer Homo Black Homo Polled **328**
TMMW Mr Derecho 184L

DBRG WHIRLWIND 735E
 VRT LAZY TV DERECHO J660
 VRT LAZY TV WINNIE G133
 BTBR NEVADA 1170Y
 TMMW MISS NEVADA 47C
 TMMW KRUGERS QUEEN 9107W

REG #:	1591342
BD:	10/7/2023
BW:	80
WW:	614

CE	BW	WW	YW	MK	TM	CEM	ST	DOC	CW	REA	MB	\$C	FPI	EPI
13	-2.5	61	95	29	60	7	13	12	20	.19	.24	89.28	74.92	179.89
BREED PERCENTILE RANKING PER EPD														
50	15	90	90	10	50	45	75	50	95	>95	80	90	90	5
Breed %			50GV 50AN			OWNER:			Mulroy Farms LLC					

Balancer Homo Black Homo Polled **332**
HRZN L149

DCH HILLE D453
 GLM HASHTAG# H11
 GLM W55
 JJNR MR DITKA B29F
 HRZN H346
 HRZN E356

REG #:	1599571
BD:	10/10/2023
BW:	73
WW:	629

CE	BW	WW	YW	MK	TM	CEM	ST	DOC	CW	REA	MB	\$C	FPI	EPI
16	-1.5	78	123	28	68	10	22	19	42	.81	.18	152.64	84.46	157.74
BREED PERCENTILE RANKING PER EPD														
15	30	30	30	15	15	10	1	1	35	10	90	1	45	15
Breed %			69GV 31AN			OWNER:			Horizon Farms					

BALANCER BULLS

Balancer Homo Black Homo Polled **333**
WAAL 12L

DLW TPG FRONTRUNNER 2510F
 TJB TAYD GLADIATOR J141 ET
 TJB ANISSA 921U 579C ET

JRI MARSHALL 214X2
 WAAL MS WILD THING 12F
 SSMK LORETTA 329D

REG #:	1582092
BD:	10/13/2023
BW:	58
WW:	505

CE	BW	WW	YW	MK	TM	CEM	ST	DOC	CW	REA	MB	\$C	FPI	EPI
18	-3.2	64	92	18	50	9	17	12	20	.64	.56	121.48	85.75	89.42
BREED PERCENTILE RANKING PER EPD														
4	10	85	95	90	95	15	20	50	95	25	15	25	35	80
Breed %		66GV 34AN			OWNER:			L. & L. Gelbvieh						

Balancer Black Homo Polled **337**
TMMW Mr Derecho 197L

DBRG WHIRLWIND 735E
 VRT LAZY TV DERECHO J660
 VRT LAZY TV WINNIE G133

TMMW GRANITES MR CIM 50Y
 TMMW MISS GRANITE 170A
 TMMW GOVENORS MS AUGUST 262X

REG #:	1605691
BD:	10/25/2023
BW:	76
WW:	589

CE	BW	WW	YW	MK	TM	CEM	ST	DOC	CW	REA	MB	\$C	FPI	EPI
10	0.0	72	116	21	57	7	16	11	37	.53	.27	110.89	78.38	193.34
BREED PERCENTILE RANKING PER EPD														
90	60	55	45	75	70	45	30	75	55	50	75	45	75	3
Breed %		63GV 37AN			OWNER:			Mulroy Farms LLC						

Balancer Homo Black Homo Polled **334**
TMMW Mr Treasure 194L

MGR TREASURE
 TAU FORTUNE 8H ET
 TAU MS GUNNISON 3147A

DLW LIFELINE 5065E
 TMMW MISS LIFELINE 194H
 TMMW MISS BISMARCK 143A

REG #:	1591357
BD:	10/18/2023
BW:	70
WW:	583

CE	BW	WW	YW	MK	TM	CEM	ST	DOC	CW	REA	MB	\$C	FPI	EPI
15	-3.7	59	93	18	48	9	16	13	21	-.11	.67	104.23	84.16	61.64
BREED PERCENTILE RANKING PER EPD														
25	5	95	90	90	>95	15	30	30	95	>95	5	60	45	95
Breed %		51GV 49AN			OWNER:			Mulroy Farms LLC						

Balancer Black Homo Polled **338**
DRGF 377L

GRRR GILLY'S BERT F847
 SFGC MR HAWK 144J
 SFGC MS SECRET HAWK 844F

DBCC FINAL OBJECTIVE
 JEB DR BCC MISS BALANCE 227Z
 JEB BCC MS SHOGUN 84X

REG #:	1601554
BD:	11/1/2023
BW:	64
WW:	705

CE	BW	WW	YW	MK	TM	CEM	ST	DOC	CW	REA	MB	\$C	FPI	EPI
14	-1.9	72	103	27	63	8	15	11	24	.37	.40	102.16	84.56	146.28
BREED PERCENTILE RANKING PER EPD														
40	20	55	75	20	35	30	45	75	90	80	45	65	40	25
Breed %		69GV 25AN 6AR			OWNER:			Duck River Gelbvieh						

Balancer Homo Black Homo Polled **335**
TMGC SB Peterbilt 307L

JKGF PAYWEIGHT G63 ET
 SKF DUNN'S LAZY PAYWEIGHT 276J
 SKF DUNNS MS WATCHMAN 508C

ADS GODFATHER 575C
 TMGC SB MARILYN 146H
 TMGC SB CANDY 142F

REG #:	1588080
BD:	10/20/2023
BW:	73
WW:	704

CE	BW	WW	YW	MK	TM	CEM	ST	DOC	CW	REA	MB	\$C	FPI	EPI
13	0.2	76	116	24	62	7	15	12	48	.86	.57	111.30	89.85	130.00
BREED PERCENTILE RANKING PER EPD														
50	65	35	45	45	40	45	45	50	20	4	15	45	20	35
Breed %		65GV 35AN			OWNER:			Stuecken Bros						

Balancer Homo Black Homo Polled **339**
TMMW Mr Overtime 203L

BTBR SAGUARO 8111F ET
 JEB BCC BLACK BALANCE J101 ET
 JEB BCC MISS OVERTIME 54C

JJNR MONEY TALKS B43C
 TMMW MISS MONEY TALKS 138G
 TMMW MISS MEDINA 56D

REG #:	1591364
BD:	11/3/2023
BW:	75
WW:	781

CE	BW	WW	YW	MK	TM	CEM	ST	DOC	CW	REA	MB	\$C	FPI	EPI
14	0.2	84	133	24	67	9	17	14	48	.40	.42	115.77	89.54	168.27
BREED PERCENTILE RANKING PER EPD														
40	65	15	15	45	15	15	20	15	20	75	40	35	20	10
Breed %		44GV 54AN 2AR			OWNER:			Mulroy Farms LLC						

Balancer Homo Black Homo Polled **336**
TMGC SB Cactus 210L

TMMW DESTINATION 82Y
 BTBR SAGUARO 8111F ET
 JEB BCC MISS OBJECTIVE 41W

WNBE SB ARIC 313A
 TMGC SB ARIAL 248F
 TMGC SB SPLENDOR 33Z

REG #:	1587988
BD:	10/21/2023
BW:	81
WW:	685

CE	BW	WW	YW	MK	TM	CEM	ST	DOC	CW	REA	MB	\$C	FPI	EPI
13	2.2	84	132	24	66	8	15	11	43	.44	.47	109.89	88.83	214.56
BREED PERCENTILE RANKING PER EPD														
50	95	15	15	45	20	30	45	75	35	65	30	50	25	1
Breed %		63GV 37AN			OWNER:			Stuecken Bros						



BALANCER BULLS

Balancer Homo Black Homo Polled **340**
KZC L192

SPFR 204Z
 KZC E71
 ABF 2207Z

VRT LAZY TV SAM U451
 KZC D65
 JENJ MISS JENJ 426B

REG #:	1612234
BD:	11/28/2023
BW:	70
WW:	546

CE	BW	WW	YW	MK	TM	CEM	ST	DOC	CW	REA	MB	\$C	FPI	EPI
17	-4.0	51	61	28	54	10	14	14	2	.66	.28	103.78	73.02	80.18
BREED PERCENTILE RANKING PER EPD														
10	4	>95	>95	15	85	10	60	15	>95	25	75	65	95	85
Breed %			75GV 25AN			OWNER:			KZ Cattle Company					

Balancer Homo Black Homo Polled **343**
DJZ 3L21

SCHIEFELBEIN ALLIED 514
 SKF DUNN'S ALLIED PAY DAY 017J
 SKF DUNNS MISS PAY DAY 916G

TMMW MR LEAACHMAN SHIFT 141E
 DJZ 103H
 DJZ 101B

REG #:	1613996
BD:	12/1/2023
BW:	67
WW:	616

CE	BW	WW	YW	MK	TM	CEM	ST	DOC	CW	REA	MB	\$C	FPI	EPI
16	-2.2	68	109	31	65	9	17	10	16	.03	.47	115.98	85.56	128.00
BREED PERCENTILE RANKING PER EPD														
15	20	70	60	3	25	15	20	90	>95	>95	30	35	35	40
Breed %			52GV 48AN			OWNER:			Zimmerman Gelbvieh					

Balancer Homo Black Homo Polled **341**
DJZ 3L18

KHR 01E
 KHR 92J
 KHR 766E

MOLITOR PLAYBOY 469-157
 DJZ 119H
 MTB BCC PEDRO 6A

REG #:	1613994
BD:	11/29/2023
BW:	70
WW:	548

CE	BW	WW	YW	MK	TM	CEM	ST	DOC	CW	REA	MB	\$C	FPI	EPI
14	-0.5	76	129	29	64	8	11	11	49	.54	.31	85.89	84.68	115.25
BREED PERCENTILE RANKING PER EPD														
40	50	35	20	10	30	30	95	75	20	45	65	95	40	55
Breed %			64GV 36AN			OWNER:			Zimmerman Gelbvieh					

Balancer Homo Black Homo Polled **344**
DJZ 3L28

SCHIEFELBEIN ALLIED 514
 SKF DUNN'S ALLIED PAY DAY 017J
 SKF DUNNS MISS PAY DAY 916G

TMGC SB ARNOLD 225W
 DJZ 112E
 OZZ TARA 37A

REG #:	1613997
BD:	12/4/2023
BW:	72
WW:	505

CE	BW	WW	YW	MK	TM	CEM	ST	DOC	CW	REA	MB	\$C	FPI	EPI
17	-2.8	67	106	28	61	10	18	10	32	40	.33	118.89	82.65	143.60
BREED PERCENTILE RANKING PER EPD														
10	10	75	70	15	45	10	10	90	70	75	60	30	50	25
Breed %			50GV 50AN			OWNER:			Zimmerman Gelbvieh					

Balancer Black Homo Polled **342**
DJZ 3L20

SCHIEFELBEIN ALLIED 514
 SKF DUNN'S ALLIED PAY DAY 017J
 SKF DUNNS MISS PAY DAY 916G

TMGC SB ARNOLD 225W
 DJZ 102G
 KEK KENYON DOTTIE 6K24D

REG #:	1613995
BD:	12/1/2023
BW:	74
WW:	503

CE	BW	WW	YW	MK	TM	CEM	ST	DOC	CW	REA	MB	\$C	FPI	EPI
15	-2.3	67	103	24	58	8	18	10	12	.16	.46	122.54	83.41	97.00
BREED PERCENTILE RANKING PER EPD														
25	15	75	75	45	65	30	10	90	>95	>95	30	25	50	70
Breed %			50GV 38AN 12AR			OWNER:			Zimmerman Gelbvieh					

Balancer Homo Black Homo Polled **345**
TMMW Mr Exponential 212L

K C F BENNETT EXPONENTIAL
 DBRG MR EXPONENTIAL 1158J
 DBRG MS EXCLUSIVE 5179C ET

DLW TPG PAYIN BILLS 3048C
 TMMW MISS PAYIN BILLS 188E
 TMMW MISS BISMARCK 140B

REG #:	1591372
BD:	12/14/2023
BW:	72
WW:	641

CE	BW	WW	YW	MK	TM	CEM	ST	DOC	CW	REA	MB	\$C	FPI	EPI
19	-4.0	64	106	23	56	10	18	11	34	46	.59	124.88	88.74	128.84
BREED PERCENTILE RANKING PER EPD														
2	4	85	70	55	75	10	10	75	65	65	15	20	25	40
Breed %			45GV 55AN			OWNER:			Mulroy Farms LLC					



Balancer Black Homo Polled **346**
SKF Dunn's Hedge Fund 001M

DEER VALLEY HEDGE FUND
 DBRG MR HEDGE FUND 2355K
 DBRG MS OUTLOOK 468B

TMMW MR YERINGTON 84B
 SKF DUNN'S MISS KORY 2K53
 SKF DUNNS MS WATCHMAN 501C

REG #:	1603609
BD:	1/7/2024
BW:	55
WW:	583

CE	BW	WW	YW	MK	TM	CEM	ST	DOC	CW	REA	MB	\$C	FPI	EPI
22	-4.9	60	97	22	54	12	13	12	40	.38	.57			87.72
BREED PERCENTILE RANKING PER EPD														
1	2	95	85	65	85	1	75	50	45	75	15			30
Breed %			50GV 50AN			OWNER:			Sandy Knoll Farm					

BALANCER BULLS

Balancer Homo Black Homo Polled **347**
SKF **Dunn's Magnitude 002M**

DEER VALLEY HEDGE FUND
 DBRG MR HEDGE FUND 2355K
 DBRG MS OUTLOOK 468B

REG #:	1612303
BD:	1/9/2024
BW:	71
WW:	652

MLM MEYERS MAGNITUDE 072H
 SKF DUNN'S MISS KLARA 2K63
 SKF DUNNS MISS WHARTON 716E

CE	BW	WW	YW	MK	TM	CEM	ST	DOC	CW	REA	MB	\$C	FPI	EPI
19	-2.3	75	124	26	67	12	15	12	44	.36	.46		90.50	
BREED PERCENTILE RANKING PER EPD														
2	15	40	30	25	15	1	45	50	30	80	30		20	
Breed %		50GV 50AN			OWNER:		Sandy Knoll Farm							



Balancer Homo Black Homo Polled **348**
SKF **Dunn's Money Market 005M**

DEER VALLEY HEDGE FUND
 DBRG MR HEDGE FUND 2355K
 DBRG MS OUTLOOK 468B

REG #:	1603589
BD:	1/10/2024
BW:	60
WW:	565

MLM MEYERS MAGNITUDE 072H
 SKF DUNN'S MISS KATE 294K
 SKF DUNNS MISS WATCHMAN 638D

CE	BW	WW	YW	MK	TM	CEM	ST	DOC	CW	REA	MB	\$C	FPI	EPI
21	-4.4	71	116	24	62	11	13	13	39	.30	.48		90.85	
BREED PERCENTILE RANKING PER EPD														
1	2	60	45	45	40	3	75	30	45	90	25		20	
Breed %		50GV 47AN 3AR			OWNER:		Sandy Knoll Farm							

Balancer Black Homo Polled **351**
SKF **Dunn's Top Shelf 026M**

JOB DANELL TD CHICO LOCO 28Y
 JOB DANELL TOP SHELF 38K ET
 JOB DANELL JOSEPHINE 33C

REG #:	1603586
BD:	1/21/2024
BW:	64
WW:	622

JKGF PAYWEIGHT G63 ET
 SKF DUNN'S MISS DEPARTURE 280K ET
 SKF DUNNS MISS NEW BUSINESS 955G

CE	BW	WW	YW	MK	TM	CEM	ST	DOC	CW	REA	MB	\$C	FPI	EPI
16	-1.0	69	101	22	56	9	15	9	36	.44	.40	110.45	81.92	89.42
BREED PERCENTILE RANKING PER EPD														
15	40	65	80	65	75	15	45	95	55	65	45	45	55	80
Breed %		75GV 25AN			OWNER:		Sandy Knoll Farm							

Balancer Homo Black Homo Polled **349**
SKF **Dunn's High Security 021M**

G A R SURE FIRE
 G A R HIGH SECURITY JSF
 G A R HIGH DESIGN

REG #:	1603571
BD:	1/18/2024
BW:	65
WW:	701

WAHL 004H ET
 SKF DUNN'S MISS FRANCHISE 251K
 SKF DUNNS MISS ARMSTRONG F806

CE	BW	WW	YW	MK	TM	CEM	ST	DOC	CW	REA	MB	\$C	FPI	EPI
16	0.0	91	132	21	66	8	17	14	46	.41	.89	129.70	105.54	149.54
BREED PERCENTILE RANKING PER EPD														
15	60	3	15	75	20	30	20	15	25	70	1	15	1	20
Breed %		50GV 50AN			OWNER:		Sandy Knoll Farm							

Balancer Black Homo Polled **352**
SWW **Housch 97M04**

WWG C28
 MJBC FRANCHISE F806
 ABCS 026C

REG #:	1596031
BD:	1/23/2024
BW:	81
WW:	596

K C F BENNETT ABSOLUTE
 SWW ANNABELLE KAITLYN 97K01
 SWW ANNABELLE LOUISE 97G57

CE	BW	WW	YW	MK	TM	CEM	ST	DOC	CW	REA	MB	\$C	FPI	EPI
16	-4.8	64	103	27	59	8	14	11	24	.68	.27	105.49	81.96	96.83
BREED PERCENTILE RANKING PER EPD														
15	2	85	75	20	55	30	60	75	90	20	75	60	55	75
Breed %		75GV 25AN			OWNER:		Wolf Gelbvieh							

Balancer Homo Black Homo Polled **350**
GMF **47M**

POSS DEADWOOD 9731
 POSS DEADWOOD 2642
 G A R SUNRISE 2016

REG #:	1605800
BD:	1/21/2024
BW:	78
WW:	630

DCH HILLE STOCK OPTIONS D410
 HRZN K139
 HRZN E120

CE	BW	WW	YW	MK	TM	CEM	ST	DOC	CW	REA	MB	\$C	FPI	EPI
17	-3.0	83	125	34	76	9	15	18	63	.66	1.00		109.13	
BREED PERCENTILE RANKING PER EPD														
10	10	15	25	1	1	15	45	1	3	25	1		1	
Breed %		44GV 56AN			OWNER:		Meng Farms Cattle Company							

Balancer Homo Black Homo Polled **353**
SKF **Dunn's Double Fund 033M**

DEER VALLEY HEDGE FUND
 DBRG MR HEDGE FUND 2355K
 DBRG MS OUTLOOK 468B

REG #:	1603855
BD:	1/26/2024
BW:	85
WW:	701

BRNS SKF BURNS DOUBLETIME 1657D
 SKF DUNN'S MISS GEMMA 9G22
 SKF DUNN'S MISS WATCHMAN 390A

CE	BW	WW	YW	MK	TM	CEM	ST	DOC	CW	REA	MB	\$C	FPI	EPI
19	-3.1	74	125	24	63	10	18	12	51	.47	.40		89.32	
BREED PERCENTILE RANKING PER EPD														
2	10	45	25	45	35	10	10	50	15	60	45		20	
Breed %		50GV 50AN			OWNER:		Sandy Knoll Farm							

BALANCER BULLS



Balancer Homo Black Homo Polled **357** SKF Dunn's Allied Destiny 046M

SCHIEFELBEIN ALLIED 514
SKF DUNN'S ALLIED 032E
SKF DUNNS MS CORTACHY FOCUS 203Z

SKF DUNN'S DESTINY 056F
SKF DUNN'S MISS KAUAI 272K
SKF DUNNS MS BLACK SANDY 5C32

REG #:	1603582
BD:	2/3/2024
BW:	89
WW:	688

CE	BW	WW	YW	MK	TM	CEM	ST	DOC	CW	REA	MB	\$C	FPI	EPI
11	2.4	76	128	29	65	7	16	12	47	.62	.40	117.59	82.89	121.37
BREED PERCENTILE RANKING PER EPD														
80	95	35	20	10	25	45	30	50	25	30	45	35	50	45
Breed %			50GV 50AN			OWNER:			Sandy Knoll Farm					

Balancer Homo Black Homo Polled **354** SKF Dunn's Double Security 035M

G A R HIGH SECURITY JSF
IAND DUNN'S SAFE CRACKER 090J
SKF DUNNS MISS JACKPOT 572C

REG #:	1603883
BD:	1/28/2024
BW:	78
WW:	586

BRNS SKF BURNS DOUBLETIME 1657D
SKF DUNN'S MISS GERILYN G900
SKF DUNNS MISS WHARTON 3A01

CE	BW	WW	YW	MK	TM	CEM	ST	DOC	CW	REA	MB	\$C	FPI	EPI
18	-3.2	66	108	22	55	9	15	13	41	.56	.59	110.76	88.49	149.40
BREED PERCENTILE RANKING PER EPD														
4	10	80	65	65	80	15	45	30	40	40	15	45	25	20
Breed %			50GV 44AN 6AR			OWNER:			Sandy Knoll Farm					

Balancer Homo Black Polled **358** SKF Dunn's Allied Fund 063M

DEER VALLEY HEDGE FUND
DBRG MR HEDGE FUND 2355K
DBRG MS OUTLOOK 468B

REG #:	1603487
BD:	2/7/2024
BW:	66
WW:	661

SCHIEFELBEIN ALLIED 514
SKF DUNN'S MISS ALLIED 124J
SKF DUNNS MISS JACKPOT SAM 932G

CE	BW	WW	YW	MK	TM	CEM	ST	DOC	CW	REA	MB	\$C	FPI	EPI
21	-1.8	88	136	28	75	12	12	14	44	.47	.47			98.15
BREED PERCENTILE RANKING PER EPD														
1	25	10	10	15	2	1	85	15	30	60	30			4
Breed %			50GV 50AN			OWNER:			Sandy Knoll Farm					

Balancer Homo Black Homo Polled **355** SKF Dunn's High Combat 038M

G A R HIGH SECURITY JSF
IAND DUNN'S SAFE CRACKER 090J
SKF DUNNS MISS JACKPOT 572C

REG #:	1603506
BD:	1/30/2024
BW:	81
WW:	642

NORG COMBAT READY D54
SKF MISS COMBAT ALLY 161J
SKF DUNNS MISS ALLIED 706E

CE	BW	WW	YW	MK	TM	CEM	ST	DOC	CW	REA	MB	\$C	FPI	EPI
16	-2.1	61	90	25	57	9	18	13	29	.43	.78	130.88	88.09	125.70
BREED PERCENTILE RANKING PER EPD														
15	20	90	95	35	70	15	10	30	80	70	2	15	25	40
Breed %			50GV 50AN			OWNER:			Sandy Knoll Farm					

Balancer Homo Black Homo Polled **359** SKF Dunn's Gallic Prince 089M

G A R ASHLAND
HPCA VERCINGETORIX
H P C A SURE FIRE P245

REG #:	1603853
BD:	2/13/2024
BW:	88
WW:	692

SKF DUNNS DEPARTURE 052D
SKF DUNN'S MISS DEPARTURE 9G16
SKF DUNNS MISS CHLOE 5C13

CE	BW	WW	YW	MK	TM	CEM	ST	DOC	CW	REA	MB	\$C	FPI	EPI
16	-1.5	72	117	28	64	8	18	14	37	.66	.83	135.54	97.05	144.84
BREED PERCENTILE RANKING PER EPD														
15	30	55	45	15	30	30	10	15	55	25	1	10	5	25
Breed %			50GV 50AN			OWNER:			Sandy Knoll Farm					

Balancer Homo Black Homo Polled **356** SKF Dunn's Allied Funding 044M

DEER VALLEY HEDGE FUND
DBRG MR HEDGE FUND 2355K
DBRG MS OUTLOOK 468B

REG #:	1603533
BD:	2/2/2024
BW:	76
WW:	701

SCHIEFELBEIN ALLIED 514
SKF DUNN'S MISS ALLEID 193J
SKF DUNNS MISS BLACK SANDY 6D65

CE	BW	WW	YW	MK	TM	CEM	ST	DOC	CW	REA	MB	\$C	FPI	EPI
18	-1.8	81	135	26	70	10	18	12	58	.52	.65			97.88
BREED PERCENTILE RANKING PER EPD														
4	25	20	15	25	10	10	50	10	50	10				4
Breed %			50GV 50AN			OWNER:			Sandy Knoll Farm					

Balancer Homo Black Homo Polled **360** SKF Dunn's Smoky Optimus 091M

SYDGEN ENHANCE
MSHP SMOKEYS ENHANCE 162H
MSHP DESTINATION 162E

REG #:	1603490
BD:	2/13/2024
BW:	70
WW:	633

SKF DUNN OPTIMUS 031B
SKF DUNN'S MISS OPTIMUS 135J
SKF DUNNS MISS BLACK SANDY 6D06

CE	BW	WW	YW	MK	TM	CEM	ST	DOC	CW	REA	MB	\$C	FPI	EPI
16	-4.1	59	97	25	55	8	15	14	32	-.10	.72	108.10	86.91	69.25
BREED PERCENTILE RANKING PER EPD														
15	3	95	85	35	80	30	45	15	70	>95	3	55	30	95
Breed %			50GV 50AN			OWNER:			Sandy Knoll Farm					

BALANCER BULLS

Balancer Black Scurred **361**
SWW Mr Fireball 97M05

G A R SURE FIRE 6404
 GB FIREBALL 672
 GB ANTICIPATION 432
 RHRT INDEPENDENCE L19
 JEMG ANNA E97 ET
 JCGR BAR GT MS ANNA 114T

REG #:	1596032
BD:	2/13/2024
BW:	84
WW:	549

CE	BW	WW	YW	MK	TM	CEM	ST	DOC	CW	REA	MB	\$C	FPI	EPI
18	-1.1	75	121	23	60	13	14	15	58	1.01	.74		95.87	
BREED PERCENTILE RANKING PER EPD														
4	35	40	35	55	50	1	60	5	10	1	3		10	
Breed %		50GV 50AN			OWNER:		Wolf Gelbvieh							

Balancer Homo Black Homo Polled **365**
BVC Mr Vern's Boost 352M

CASINO BOMBER N33
 K C F BENNETT EXPONENTIAL
 K C F MISS SOUTHSIDE
 FHG FLYING H MR TRACTION 45B
 BVC MS TRACTION 521F ET
 RLS KRUGERRAND KAISER 332X

REG #:	1609085
BD:	2/17/2024
BW:	85
WW:	672

CE	BW	WW	YW	MK	TM	CEM	ST	DOC	CW	REA	MB	\$C	FPI	EPI
14	-1.0	77	127	29	68	5	18	10	49	.64	.51	118.82	90.59	148.56
BREED PERCENTILE RANKING PER EPD														
40	40	35	25	10	15	80	10	90	20	25	20	30	20	20
Breed %		40GV 60AN			OWNER:		Bryce Family Farms LLC							

Balancer Homo Black Homo Polled **362**
SKF Dunn's Profit Margin 102M

DEER VALLEY HEDGE FUND
 DBRG MR HEDGE FUND 2355K
 DBRG MS OUTLOOK 468B
 TMMW MR YERINGTON 84B
 SKF DUNN'S MISS YERINGTON 081H
 SKF DUNNS MS WATCHMAN 508C

REG #:	1603451
BD:	2/14/2024
BW:	73
WW:	732

CE	BW	WW	YW	MK	TM	CEM	ST	DOC	CW	REA	MB	\$C	FPI	EPI
20	-3.4	74	121	20	60	11	15	14	40	.45	.68		96.06	
BREED PERCENTILE RANKING PER EPD														
1	10	45	35	80	50	3	45	15	45	65	5		10	
Breed %		50GV 50AN			OWNER:		Sandy Knoll Farm							

Balancer Homo Black Homo Polled **366**
JEB BCC Black Balance M401 ET

V A R DISCOVERY 2240
 JKGF CIVIL WAR E92
 JKGF LOTTIE C92
 BNG OVERTIME 23Y
 JEB BCC MISS BALANCE 41A
 BWF BRANDYWINE NINETTE 313N

REG #:	1614502
BD:	2/19/2024
BW:	ET
WW:	ET

CE	BW	WW	YW	MK	TM	CEM	ST	DOC	CW	REA	MB	\$C	FPI	EPI
8	2.0	93	149	25	71	5	17	15	63	.77	.52	123.96	95.04	181.89
BREED PERCENTILE RANKING PER EPD														
>95	95	2	3	35	5	80	20	5	3	10	20	20	10	5
Breed %		50GV 50AN			OWNER:		Burbank Cattle Company							

Balancer Homo Black Homo Polled **363**
IAND Dunn's Secure Business 095M

G A R SURE FIRE 6404
 G A R HIGH SECURITY JSF
 G A R HIGH DESIGN
 TMGC SB GOOD BUSINESS 143B
 SKF DUNN'S MISS FELICIA 8F04
 SKF DUNNS MS XCELLANCE 075X

REG #:	1603813
BD:	2/14/2024
BW:	89
WW:	643

CE	BW	WW	YW	MK	TM	CEM	ST	DOC	CW	REA	MB	\$C	FPI	EPI
13	0.1	78	122	19	56	6	19	11	38	.60	.43	142.07	86.11	127.97
BREED PERCENTILE RANKING PER EPD														
50	65	30	30	85	75	65	5	75	50	35	35	3	35	40
Breed %		50GV 50AN			OWNER:		Sandy Knoll Farm							

Balancer Black Homo Polled **367**
SKF Dunn's Bonus Fund 115M

DEER VALLEY HEDGE FUND
 DBRG MR HEDGE FUND 2355K
 DBRG MS OUTLOOK 468B
 SKF DUNN OPTIMUS 031B
 SKF DUNN'S MISS OPTIMUS 925G
 SKF DUNN'S MISS HARDWARE 642D

REG #:	1603838
BD:	2/19/2024
BW:	72
WW:	782

CE	BW	WW	YW	MK	TM	CEM	ST	DOC	CW	REA	MB	\$C	FPI	EPI
21	-2.7	77	118	26	67	12	15	15	45	.35	.70		98.41	
BREED PERCENTILE RANKING PER EPD														
1	15	35	40	25	15	1	45	5	30	80	4		4	
Breed %		50GV 47AN 3AR			OWNER:		Sandy Knoll Farm							

Balancer Homo Black Homo Polled **364**
SKF Dunn's Gallic King 106M

G A R ASHLAND
 HPCA VERCINGETORIX
 H P C A SURE FIRE P245
 TMMW DESTINATION 82Y
 SKF DUNN'S MISS DESTINATION 831F
 SKF DUNNS MS BLACK SANDY 448B

REG #:	1603795
BD:	2/17/2024
BW:	91
WW:	666

CE	BW	WW	YW	MK	TM	CEM	ST	DOC	CW	REA	MB	\$C	FPI	EPI
14	-0.2	79	136	25	64	9	13	14	48	.75	.74	101.98	96.43	176.17
BREED PERCENTILE RANKING PER EPD														
40	55	25	10	35	30	15	75	15	20	15	3	65	5	10
Breed %		44GV 56AN			OWNER:		Sandy Knoll Farm							



BALANCER BULLS

Balancer Homo Black Homo Polled **368**
BRNS 406M

DLW LIFELINE 5065E
 TMMW MR LIFELINE 63H
 TMMW MISS NEVADA 54B

TMMW DESTINATION 82Y
 JGPG LEE ANN 6223D
 VER LEE ANN 344Z

REG #:	1616069
BD:	2/20/2024
BW:	90
WW:	549

CE	BW	WW	YW	MK	TM	CEM	ST	DOC	CW	REA	MB	\$C	FPI	EPI	
10	1.1	79	126	21	60	6	12	10	40	.40	.65	88.19	89.88	73.38	
BREED PERCENTILE RANKING PER EPD															
90	85	25	25	75	50	65	85	90	45	75	10	90	20	90	
Breed %	55GV 45AN				OWNER:					Burns Gelbvieh					

Balancer Homo Black Homo Polled **371**
PRD Dunn's Celtic War 139M

HPCA VERCINGETORIX
 IAND DUNN'S CELTIC LARAX 107K
 SKF DUNNS MISS JACKPOT 572C

JKGF CIVIL WAR E92
 EGL FARAH H059
 EGL FARAH C099 ET

REG #:	1603632
BD:	2/25/2024
BW:	87
WW:	738

CE	BW	WW	YW	MK	TM	CEM	ST	DOC	CW	REA	MB	\$C	FPI	EPI	
15	-0.4	83	134	27	68	8	11	14	44	.84	.83	90.78	101.89	170.27	
BREED PERCENTILE RANKING PER EPD															
25	50	15	15	20	15	30	95	15	30	5	1	85	2	10	
Breed %	50GV 50AN				OWNER:					Sandy Knoll Farm					

Balancer Black Homo Polled **369**
SKF Dunn's Allied Cascade 180M

HCC WHITEWATER 9010
 BTBR CASCADE 2291 ET
 BTBR MS BLACK CROSS 5130

SKF DUNNS ALLIED 032E
 SKF DUNN'S MISS GLENNETTE 9G84
 SKF DUNN'S MS FUDGE FORTUNE 6D32

REG #:	1603868
BD:	2/21/2024
BW:	71
WW:	806

CE	BW	WW	YW	MK	TM	CEM	ST	DOC	CW	REA	MB	\$C	FPI	EPI	
24	-5.2	70	119	35	70	14	16	12	46	.80	.57		95.92		
BREED PERCENTILE RANKING PER EPD															
1	1	65	40	1	10	1	30	50	25	10	15		10		
Breed %	50GV 50AN				OWNER:					Sandy Knoll Farm					

Balancer Homo Black Homo Polled **372**
BVC 53M

TMMW HOLE IN ONE 93D
 DRGF 13H
 DRGF 708E

JKGF CHIEF JUSTICE C205
 BVC MISS JUSTICE 52G ET
 DPWG 16X

REG #:	1599349
BD:	2/27/2024
BW:	90
WW:	753

CE	BW	WW	YW	MK	TM	CEM	ST	DOC	CW	REA	MB	\$C	FPI	EPI	
13	1.2	75	122	24	62	8	17	13	43	.52	.46	122.88	84.73	152.00	
BREED PERCENTILE RANKING PER EPD															
50	85	40	30	45	40	30	20	30	35	50	30	25	40	20	
Breed %	74GV 26AN				OWNER:					Flint Hills GV / Bryce Farms					

Balancer Homo Black Homo Polled **370**
SKF Dunn's Celtic Pro 131M

HPCA VERCINGETORIX
 IAND DUNN'S CELTIC LARAX 107K
 SKF DUNNS MISS JACKPOT 572C

WFA FLYING H MR PRO 20G
 SKF DUNN'S MISS JOANNA 191J
 SKF DUNN'S MISS ZANDER 7E14

REG #:	1603532
BD:	2/23/2024
BW:	81
WW:	746

CE	BW	WW	YW	MK	TM	CEM	ST	DOC	CW	REA	MB	\$C	FPI	EPI	
16	-2.8	68	102	35	68	10	18	13	26	.48	.78	126.29	94.16	142.64	
BREED PERCENTILE RANKING PER EPD															
15	10	70	80	1	15	10	10	30	85	60	2	20	10	25	
Breed %	53GV 47AN				OWNER:					Sandy Knoll Farm					

Balancer Homo Black Homo Polled **373**
PRD Dunn's Hot Market 223M

DEER VALLEY HEDGE FUND
 DBRG MR HEDGE FUND 2355K
 DBRG MS OUTLOOK 468B

SKF DUNN OPTIMUS 031B
 PRD DUNN'S MS FAST TRACK 869F
 PRD DUNNS MS BRILLIANCE 441B

REG #:	1603805
BD:	2/27/2024
BW:	75
WW:	814

CE	BW	WW	YW	MK	TM	CEM	ST	DOC	CW	REA	MB	\$C	FPI	EPI	
21	-3.7	76	120	27	69	13	19	13	54	.50	.52		94.46		
BREED PERCENTILE RANKING PER EPD															
1	5	35	35	20	10	1	5	30	10	55	20		10		
Breed %	50GV 50AN				OWNER:					Sandy Knoll Farm					



Balancer Homo Black Homo Polled **374**
JEB BCC Black Balance M403 ET

V A R DISCOVERY 2240
 JKGF CIVIL WAR E92
 JKGF LOTTIE C92

BNG OVERTIME 23Y
 JEB BCC MISS BALANCE 41A
 BWF BRANDYWINE NINETTE 313N

REG #:	1614504
BD:	2/28/2024
BW:	ET
WW:	ET

CE	BW	WW	YW	MK	TM	CEM	ST	DOC	CW	REA	MB	\$C	FPI	EPI	
12	0.2	82	133	25	66	7	17	10	56	1.05	.40	127.55	89.08	165.20	
BREED PERCENTILE RANKING PER EPD															
65	65	20	15	35	20	45	20	90	10	1	45	15	25	10	
Breed %	50GV 50AN				OWNER:					Burbank Cattle Company					

BALANCER BULLS

Balancer Homo Black Homo Polled **375**
SKF **Dunn's Profit Margin 226M**

DEER VALLEY HEDGE FUND
 DBRG MR HEDGE FUND 2355K
 DBRG MS OUTLOOK 468B

REG #:	1603791
BD:	3/3/2024
BW:	76
WW:	755

MTB BCC PEDRO 6A
 SKF DUNN'S MISS PEDRO 818F
 SKF DUNNS MISS WHARTON 696D

CE	BW	WW	YW	MK	TM	CEM	ST	DOC	CW	REA	MB	\$C	FPI	EPI
20	-4.0	68	111	25	62	12	16	12	45	.43	.31			84.71
BREED PERCENTILE RANKING PER EPD														
1	4	70	55	35	40	1	30	50	30	70	65			40
Breed %		56GV 44AN			OWNER:		Sandy Knoll Farm							

Balancer Homo Black Homo Polled **379**
SKF **Dunn's Magnitude Shift 168M**

MEAD MAGNITUDE
 MLM MEYER'S MAGNITUDE 072H
 VVGR MISS 820U

REG #:	1603692
BD:	3/6/2024
BW:	88
WW:	676

LEACHMAN SHIFT G026Y
 SKF DUNN'S MISS SHIFT 550C
 SKF DUNNS MIS HERCULES 292Z

CE	BW	WW	YW	MK	TM	CEM	ST	DOC	CW	REA	MB	\$C	FPI	EPI
15	-2.1	58	92	26	55	7	21	11	47	.50	.73	143.38	84.82	87.52
BREED PERCENTILE RANKING PER EPD														
25	20	95	95	25	80	45	1	75	25	55	3	3	40	80
Breed %		50GV 50AN			OWNER:		Sandy Knoll Farm							

Balancer Black Homo Polled **376**
SKF **Dunn's Prime Magnitude 165M**

MEAD MAGNITUDE
 MLM MEYER'S MAGNITUDE 072H
 VVGR MISS 820U

REG #:	1603708
BD:	3/4/2024
BW:	80
WW:	617

BNG OVERTIME 23Y
 SKF DUNN'S MS DOUBLE TIME 5C65
 SKF DUNNS MS PRIME TIME 108Y

CE	BW	WW	YW	MK	TM	CEM	ST	DOC	CW	REA	MB	\$C	FPI	EPI
17	-2.2	63	103	25	58	11	22	11	32	.59	.75	154.64	90.13	130.22
BREED PERCENTILE RANKING PER EPD														
10	20	90	75	35	65	3	1	75	70	35	3	1	20	35
Breed %		50GV 50AN			OWNER:		Sandy Knoll Farm							

Balancer Homo Black Polled **380**
BVC **Balanced Barlo 358M**

TMGC SB FORMULA 12E
 TMGC SB BARCELONA 124H
 TMGC SB HILDA 44D

REG #:	1609098
BD:	3/9/2024
BW:	80
WW:	746

BVC MR BALANCE 516E
 BVC 56K
 BVC 67F

CE	BW	WW	YW	MK	TM	CEM	ST	DOC	CW	REA	MB	\$C	FPI	EPI
13	0.6	78	116	32	72	7	20	11	48	.87	.62	137.10	91.56	163.59
BREED PERCENTILE RANKING PER EPD														
50	75	30	45	2	4	45	3	75	20	4	10	10	15	15
Breed %		62GV 38AN			OWNER:		Bryce Family Farms LLC							

Balancer Homo Black Homo Polled **377**
SKF **Dunn's Total Magnitude 163M**

MEAD MAGNITUDE
 MLM MEYER'S MAGNITUDE 072H
 VVGR MISS 820U

REG #:	1603730
BD:	3/4/2024
BW:	79
WW:	624

LRRG SKF CONCURRENCE 117B
 SKF DUNN'S MISS OVERTIME 691D
 SKF DUNNS MISS WATCHMAN 390A

CE	BW	WW	YW	MK	TM	CEM	ST	DOC	CW	REA	MB	\$C	FPI	EPI
15	-2.1	67	103	22	56	8	14	10	26	.21	.78	106.24	91.41	105.13
BREED PERCENTILE RANKING PER EPD														
25	20	75	75	65	75	30	60	90	85	95	2	55	15	65
Breed %		50GV 50AN			OWNER:		Sandy Knoll Farm							

Balancer Homo Black Homo Polled **381**
SKF **Dunn's Ready Line 235M**

LEACHMAN TL BOTTOMLINE
 SKF DUNN'S BOTTOM LINE 099J
 SKF DUNNS MISS JACKPOT 682D

REG #:	1603844
BD:	3/10/2024
BW:	71
WW:	831

JJNR READY CASH B52C
 SKF DUNN'S MISS READYWARE 952G
 SKF DUNNS MS LETHAL HARDWARE

CE	BW	WW	YW	MK	TM	CEM	ST	DOC	CW	REA	MB	\$C	FPI	EPI
17	-0.2	81	122	28	69	10	17	13	28	.78	.67	130.52	96.33	131.21
BREED PERCENTILE RANKING PER EPD														
10	55	20	30	15	10	10	20	30	80	10	5	15	5	35
Breed %		50GV 50AN			OWNER:		Sandy Knoll Farm							

Balancer Black Homo Polled **378**
SKF **Dunn's Vegas Jackpot 231M**

LEACHMAN TL BOTTOMLINE
 SKF DUNN'S BOTTOM LINE 099J
 SKF DUNNS MISS JACKPOT 682D

REG #:	1603828
BD:	3/4/2024
BW:	74
WW:	679

TMMW MR YERINGTON 84B
 SKF DUNN'S MISS YERRINGTON 8F61
 SKF DUNNS MISS HAULER 017X

CE	BW	WW	YW	MK	TM	CEM	ST	DOC	CW	REA	MB	\$C	FPI	EPI
21	-3.5	68	102	25	59	12	17	14	14	.30	.74	122.90	94.11	107.14
BREED PERCENTILE RANKING PER EPD														
1	10	70	80	35	55	1	20	15	>95	90	3	25	10	60
Breed %		50GV 50AN			OWNER:		Sandy Knoll Farm							

Balancer Homo Black Homo Polled **382**
SKF **Dunn's Enhanced Probity 192M**

SYDGEN ENHANCE
 MSHP SMOKEYS ENHANCE 162H
 MSPG DESTINATION 162E

REG #:	1603424
BD:	3/15/2024
BW:	83
WW:	673

JRI PROBITY 254D28
 SKF DUNN'S MISS PROBITY 005H
 SKF DUNNS MISS BLACK SANDY 8F30

CE	BW	WW	YW	MK	TM	CEM	ST	DOC	CW	REA	MB	\$C	FPI	EPI
15	-1.0	77	133	28	68	7	15	12	45	.37	.39	107.69	87.79	142.95
BREED PERCENTILE RANKING PER EPD														
25	40	35	15	15	15	45	50	30	80	45	55	30	25	
Breed %		50GV 50AN			OWNER:		Sandy Knoll Farm							

BALANCER BULLS

Balancer Black Homo Polled **383**
SKF Dunn's Level Cascade 239M

HCC WHITEWATER 9010
 BTBR CASCADE 2291 ET
 BTBR MS BLACK CROSS 5130

REG #:	1603837
BD:	3/17/2024
BW:	70
WW:	766

SKF DUNNS 2ND NEW LEVEL 071D ET
 SKF DUNN'S MISS B29 HARDWARE 919G
 SKF DUNNS MISS HARDWARE 637D

CE	BW	WW	YW	MK	TM	CEM	ST	DOC	CW	REA	MB	\$C	FPI	EPI
24	-4.3	75	127	28	66	13	12	10	51	.52	.76		101.46	
BREED PERCENTILE RANKING PER EPD														
1	3	40	25	15	20	1	85	90	15	50	3		2	
Breed %			50GV 45AN 5AR	OWNER:		Sandy Knoll Farm								

56% Gelbvieh Black Homo Polled **387**
DARN Big Ghungus 1224L

TMGC SB TOURISM 41F
 TMGC SB TOURISM 08J
 TMGC SB ELAINE'S GUNNER 120A ET

REG #:	1600398
BD:	12/24/2023
BW:	50
WW:	756

DJBG JACKSON
 NFCC BLACK GHOST 224Z
 BLACK STAR

CE	BW	WW	YW	MK	TM	CEM	ST	DOC	CW	REA	MB	\$C	FPI	EPI
14	2.8	83	126	20	62	9	13	11	17	.29	.33		84.54	
BREED PERCENTILE RANKING PER EPD														
40	>95	15	25	80	40	15	75	75	>95	90	60		40	
Breed %			56GV 19AN 25XX	OWNER:		Darnell Farm								

Balancer Homo Black Homo Polled **384**
SKF Dunn's Absolute Magnitude 202M

MEAD MAGNITUDE
 MLM MEYER'S MAGNITUDE 072H
 VVGR MISS 820U

REG #:	1603765
BD:	3/18/2024
BW:	79
WW:	609

K C F BENNETT ABSOLUTE
 SKF DUNN'S MISS ELISHA 70E6 ET
 SKF MISS ENCLUSIVE 301N

CE	BW	WW	YW	MK	TM	CEM	ST	DOC	CW	REA	MB	\$C	FPI	EPI
17	-1.8	66	112	24	58	10	12	11	46	.76	.49	100.17	85.14	148.88
BREED PERCENTILE RANKING PER EPD														
10	25	80	55	45	65	10	85	75	25	10	25	70	40	20
Breed %			50GV 50AN	OWNER:		Sandy Knoll Farm								

72% Gelbvieh Homo Black Homo Polled **388**
DLFM Master Chief 1227L

JKGF CHIEF JUSTICE C205
 GMF 115J
 GMF MENG 83F

REG #:	1600226
BD:	12/27/2023
BW:	50
WW:	698

CBX MR REFLEX 7
 DLFM SUN UP 1030H
 NFCC BREAK OF DAWN 115D

CE	BW	WW	YW	MK	TM	CEM	ST	DOC	CW	REA	MB	\$C	FPI	EPI
14	-1.0	71	98	25	62	8	18	14	34	.50	.48		85.10	
BREED PERCENTILE RANKING PER EPD														
35	35	55	80	30	35	25	15	15	50	60	20		30	
Breed %			72GV 16AN 12XX	OWNER:		Darnell Farm								

Balancer Homo Black Homo Polled **385**
BVC Mr Balanced Barlo 366M

TMGC SB FORMULA 12E
 TMGC SB BARCELONA 124H
 TMGC SB HILDA 44D

REG #:	1609088
BD:	3/18/2024
BW:	75
WW:	670

BVC MR BALANCE 516E
 BVC 52H
 BVC MS EXCITEMENT 58F ET

CE	BW	WW	YW	MK	TM	CEM	ST	DOC	CW	REA	MB	\$C	FPI	EPI
15	-0.1	69	105	29	64	9	17	12	29	.54	.58	116.79	86.23	143.75
BREED PERCENTILE RANKING PER EPD														
25	60	65	70	10	30	15	20	50	80	45	15	35	35	25
Breed %			63GV 37AN	OWNER:		Bryce Family Farms LLC								

72% Gelbvieh Black Homo Polled **389**
DLFM Doctor Strange 203M

JKGF CHIEF JUSTICE C205
 GMF 115J
 GMF MENG 83F

REG #:	1600399
BD:	2/3/2024
BW:	50
WW:	627

CBX MR REFLEX 7
 DLFM TIMEX 623G
 NFCC BOUGHT TIME 616B

CE	BW	WW	YW	MK	TM	CEM	ST	DOC	CW	REA	MB	\$C	FPI	EPI
18	-1.7	71	112	23	60	11	15	14	46	.89	.46		87.44	
BREED PERCENTILE RANKING PER EPD														
4	25	55	45	50	45	3	50	15	20	5	25		20	
Breed %			72GV 16AN 12XX	OWNER:		Darnell Farm								

Balancer Homo Black Homo Polled **386**
BVC Vern's Balance 373M

TMGC SB FORMULA 12E
 TMGC SB BARCELONA 124H
 TMGC SB HILDA 44D

REG #:	1609097
BD:	3/25/2024
BW:	83
WW:	683

BVC MR BALANCE 516E
 BVC 56H
 BVC GOVERNORS LINE 315Y

CE	BW	WW	YW	MK	TM	CEM	ST	DOC	CW	REA	MB	\$C	FPI	EPI
14	1.2	76	114	29	67	8	17	11	34	.68	.64	122.29	89.90	166.73
BREED PERCENTILE RANKING PER EPD														
40	85	35	50	10	15	30	20	75	65	20	10	25	20	10
Breed %			70GV 30AN	OWNER:		Bryce Family Farms LLC								

74% Gelbvieh Black Scurred **390**
WAAL 44L

DLW TPG FRONTRUNNER 2510F
 TJB TAYD GLADIATOR J141 ET
 TJB ANISSA 921U 579C ET

REG #:	1608663
BD:	12/12/2023
BW:	91
WW:	639

GGGE 3G YUKON 132Y
 CRRF E44
 CRRF BEE LICKS CASSIDY

CE	BW	WW	YW	MK	TM	CEM	ST	DOC	CW	REA	MB	\$C	FPI	EPI
13	-3.5	66	100	20	53	7	16	11	34	.69	.42		83.32	
BREED PERCENTILE RANKING PER EPD														
50	5	75	75	80	85	45	35	70	50	25	30		40	
Breed %			74GV 24AN 2LM	OWNER:		L & L Gelbvieh								

76% Gelbvieh Homo Black Homo Polled **391-**
CCFM 400L

TMGC SB FORMULA 12E
 TMGC SB DCN REVOLUTION 287G
 TMGC 213X

MCJ RJ VISION 809W
 CCFM 303A
 CCFM 110Y

REG #:	1608350
BD:	10/20/2023
BW:	78
WW:	570

CE	BW	WW	YW	MK	TM	CEM	ST	DOC	CW	REA	MB	\$C	FPI	EPI
13	-1.0	64	94	19	51	7	16	13	33	.72	.35	111.88	76.90	102.19
BREED PERCENTILE RANKING PER EPD														
50	35	80	85	85	90	45	35	25	55	20	45	50	70	50
Breed %		76GV 12AN 12XX			OWNER:		Chapuis Cattle Farm							



77% Gelbvieh Homo Black Homo Polled **392-**
TMGC SB Barcelona 243L

CCRO CAROLINA LEVERAGE 3214A
 TMGC SB FORMULA 12E
 TMGC SB DANIELLE 07C

SKF DUNN OPTIMUS 031B
 TMGC SB OPAL 163F
 TMGC SB SUE OF CPR 61R 174D ET

REG #:	1588016
BD:	10/4/2023
BW:	75
WW:	617

CE	BW	WW	YW	MK	TM	CEM	ST	DOC	CW	REA	MB	\$C	FPI	EPI
15	-0.9	77	108	26	65	10	15	15	41	.80	.77	119.53	95.80	102.40
BREED PERCENTILE RANKING PER EPD														
25	35	30	55	25	20	10	50	4	30	15	2	35	4	50
Breed %		77GV 23AN			OWNER:		Stuecken Bros							

80% Gelbvieh Homo Black Homo Polled **395-**
DRGF 327L

GMF FORTUNE 616D
 HRZN H182
 HRZN E103

DMP D610
 JEB BCC DR MS BALANCE 204F
 JEB BCC MISS POGO 44W

REG #:	1601550
BD:	9/10/2023
BW:	68
WW:	571

CE	BW	WW	YW	MK	TM	CEM	ST	DOC	CW	REA	MB	\$C	FPI	EPI
13	-1.6	65	92	22	54	7	22	11	26	.46	.53	143.33	82.60	54.36
BREED PERCENTILE RANKING PER EPD														
50	25	80	90	60	80	45	1	70	80	70	15	5	40	90
Breed %		80GV 20AN			OWNER:		Duck River Gelbvieh							

78% Gelbvieh Homo Black Homo Polled **393-**
WAAL Black Lava 124L

DLW TPG FRONTRUNNER 2510F
 TJB TAYD GLADIATOR J141 ET
 TJB ANISSA 921U 579C ET

JKGF KAT NAPPER D26
 WAAL 24 YELLOW J26
 WAAL MS WILD THING 12F

REG #:	1587353
BD:	11/9/2023
BW:	72
WW:	698

CE	BW	WW	YW	MK	TM	CEM	ST	DOC	CW	REA	MB	\$C	FPI	EPI
16	-0.8	86	125	22	65	9	18	14	26	.63	.56	130.80	96.18	114.38
BREED PERCENTILE RANKING PER EPD														
15	40	10	20	60	20	15	15	15	80	35	10	20	4	40
Breed %		78GV 22AN			OWNER:		L & L Gelbvieh							

80% Gelbvieh Homo Black Homo Polled **396-**
HRZN L106

DCH HILLE D453
 GLM HASHTAG# H11
 GLM W55

DCH HILLE STOCK OPTIONS D410
 HRZN J375
 HRZN F340

REG #:	1599585
BD:	9/15/2023
BW:	71
WW:	608

CE	BW	WW	YW	MK	TM	CEM	ST	DOC	CW	REA	MB	\$C	FPI	EPI
17	-1.9	82	115	23	65	9	18	18	47	1.05	.19	134.41	86.44	147.70
BREED PERCENTILE RANKING PER EPD														
10	20	15	40	50	20	15	15	1	15	1	80	15	25	15
Breed %		80GV 20AN			OWNER:		Horizon Farms							

80% Gelbvieh Homo Black Homo Polled **394-**
DRGF 312L

GMF FORTUNE 616D
 HRZN H182
 HRZN E103

DMP D610
 JEB BCC DR MS BALANCE 201F
 JDKG MS DESIGN BALANCER 933U

REG #:	1601546
BD:	8/30/2023
BW:	64
WW:	556

CE	BW	WW	YW	MK	TM	CEM	ST	DOC	CW	REA	MB	\$C	FPI	EPI
16	-3.0	60	85	22	51	9	17	12	25	.44	.41	113.66	78.72	63.51
BREED PERCENTILE RANKING PER EPD														
15	10	90	95	60	90	15	25	50	80	75	30	45	60	85
Breed %		80GV 20AN			OWNER:		Duck River Gelbvieh							

80% Gelbvieh Homo Black Homo Polled **397-**
HRZN L160

DCH HILLE D453
 GLM HASHTAG# H11
 GLM W55

DJZ 114E
 HRZN H403
 HRZN D381

REG #:	1599575
BD:	10/12/2023
BW:	88
WW:	572

CE	BW	WW	YW	MK	TM	CEM	ST	DOC	CW	REA	MB	\$C	FPI	EPI
12	1.0	78	122	25	64	6	22	14	31	.50	.52	154.22	87.84	146.05
BREED PERCENTILE RANKING PER EPD														
65	80	25	25	30	25	60	1	15	60	60	15	2	20	15
Breed %		80GV 20AN			OWNER:		Horizon Farms							

81% Gelbvieh Homo Black Homo Polled **398**
HRZN L148

DCH HILLE D453
 GLM HASHTAG# H11
 GMF W55
 BWF BRANDYWINE ZACK 201Z
 HRZN D381
 HRZN A3881

REG #:	1599541
BD:	10/10/2023
BW:	66
WW:	585

CE	BW	WW	YW	MK	TM	CEM	ST	DOC	CW	REA	MB	\$C	FPI	EPI
19	-3.7	64	95	27	59	11	21	19	33	.48	.49	143.13	85.61	122.12
BREED PERCENTILE RANKING PER EPD														
2	4	80	85	15	50	3	2	1	55	65	20	5	30	30
Breed %		81GV 19AN			OWNER:			Horizon Farms						

81% Gelbvieh Homo Black Homo Polled **399**
HRZN L162

DCH HILLE D453
 GLM HASHTAG# H11
 GMF W55
 MLLC M/L ADVANTAGE 345C
 HRZN E305
 HRZN C248

REG #:	1599546
BD:	10/13/2023
BW:	84
WW:	584

CE	BW	WW	YW	MK	TM	CEM	ST	DOC	CW	REA	MB	\$C	FPI	EPI
12	0.4	84	130	23	65	6	19	21	44	.65	.43	134.65	89.55	195.60
BREED PERCENTILE RANKING PER EPD														
65	65	10	15	50	20	60	10	1	25	35	30	15	15	2
Breed %		81GV 19AN			OWNER:			Horizon Farms						

81% Gelbvieh Homo Black Homo Polled **400**
HRZN L174

DCH HILLE D453
 GLM HASHTAG# H11
 GMF W55
 SKF DUNNS OPTIMIST 003F
 HRZN H167
 HRZN E120

REG #:	1599569
BD:	10/15/2023
BW:	72
WW:	635

CE	BW	WW	YW	MK	TM	CEM	ST	DOC	CW	REA	MB	\$C	FPI	EPI
17	-1.7	76	112	27	65	10	16	18	44	.76	.35	124.85	86.98	148.04
BREED PERCENTILE RANKING PER EPD														
10	25	35	45	15	20	10	35	1	25	15	45	25	25	15
Breed %		81GV 17AN 2AR			OWNER:			Horizon Farms						

81% Gelbvieh Homo Black Homo Polled **401**
DRGF 385L

DDGR RESILIENT 275D
 GMF 034H
 GMF MENG 57C
 TMGC SB ARNOLD 225W
 JEB DR BCC MISS BALANCE 206Z
 LCBK BCC MS SHOGUN 45X

REG #:	1601548
BD:	12/4/2023
BW:	72
WW:	649

CE	BW	WW	YW	MK	TM	CEM	ST	DOC	CW	REA	MB	\$C	FPI	EPI
14	-2.7	68	106	30	64	7	16	12	38	.81	.12	117.02	77.60	114.26
BREED PERCENTILE RANKING PER EPD														
35	10	65	60	4	25	45	35	50	40	10	90	40	65	40
Breed %		81GV 19AN			OWNER:			Duck River Gelbvieh						

About Gelbvieh Bulls

Each of the Gelbvieh bulls is listed separately in the catalog with their own individual performance and pedigree information. They are all registered with the American Gelbvieh Association. The EPD's are the most current provided by the Gelbvieh Assoc.

The Average EPD's for Gelbvieh bulls as of 2/4/25:
 CE:13 BW: 0.1 WW: 71 YW: 105 MK: 23 TM: 58
 CEM: 7 ST: 16 DOC: 12 CW: 29 REA: 0.65
 MB: 0.22 \$C: 116.81 FPI: 77.16 EPI: 83.39

PB Gelbvieh Homo Black Homo Polled **402**
TMMW Mr Stock Options 113L

CCRO CAROLINA LEVERAGE 3214A
 DCH HILLE STOCK OPTIONS D410
 DCH HILLE B189 ET
 SPFR LAND CRUISER
 TMMW MISS FORTUNE 183E
 TMMW MISS GRANITE 76A

REG #:	1591272
BD:	9/6/2023
BW:	77
WW:	700

CE	BW	WW	YW	MK	TM	CEM	ST	DOC	CW	REA	MB	\$C	FPI	EPI
14	1.2	86	125	26	69	8	17	10	30	.97	.30	127.45	88.39	105.66
BREED PERCENTILE RANKING PER EPD														
30	80	4	10	25	4	20	30	85	45	4	30	30	10	25
Breed %		99.9GV			OWNER:			Mulroy Farms LLC						

PB Gelbvieh Homo Black Polled **403**
WNBE 350L

CCRO CAROLINA LEVERAGE 3214A
 DCH HILLE STOCK OPTIONS D410
 DCH HILLE B189 ET
 VRT LAZY TV SAM U451
 JEB ZINIA 400Z ET
 EGL U044ET

REG #:	1578638
BD:	9/9/2023
BW:	74
WW:	648

CE	BW	WW	YW	MK	TM	CEM	ST	DOC	CW	REA	MB	\$C	FPI	EPI
13	0.9	91	129	24	70	6	18	11	38	1.34	.13	141.37	87.27	123.72
BREED PERCENTILE RANKING PER EPD														
40	70	2	10	40	3	55	20	70	20	1	75	10	10	10
Breed %		99.9GV			OWNER:			Wannabe Stock Farm						

PB Gelbvieh Homo Black Homo Polled **404**
TMMW Mr Hole In One 117L

KHR 79B
 TMMW HOLE IN ONE 93D
 TMMW BEETHOVENS MISS PRIDE 3A
 DCH HILLE STOCK OPTIONS D410
 TMMW MISS STOCK OPTONS 179H
 TMMW BEETHOVENS MISS CADI 1A

REG #:	1591276
BD:	9/10/2023
BW:	65
WW:	665

CE	BW	WW	YW	MK	TM	CEM	ST	DOC	CW	REA	MB	\$C	FPI	EPI
15	-1.4	79	115	30	70	9	18	10	32	.55	.32	135.21	87.60	124.66
BREED PERCENTILE RANKING PER EPD														
20	20	20	25	3	3	10	20	85	40	75	25	20	10	10
Breed %		95GV 5AN			OWNER:			Mulroy Farms LLC						

GELBVIEW BULLS

PB Gelbvieh Homo Black Homo Polled **405**
HRZN L102

DCH HILLE D453
 GLM HASHTAG# H11
 GLM W55

LAW MARK 853F
 HRZN J408
 HRZN E305

REG #:	1599586
BD:	9/13/2023
BW:	71
WW:	548

CE	BW	WW	YW	MK	TM	CEM	ST	DOC	CW	REA	MB	\$C	FPI	EPI	
13	0.5	72	113	24	60	7	20	21	40	.96	.39	140.07	82.60	163.19	
BREED PERCENTILE RANKING PER EPD															
40	60	45	30	40	40	35	5	1	15	4	15	15	25	2	
Breed %	84GV 16AN				OWNER:					Horizon Farms					

PB Gelbvieh Black Homo Polled **409**
DRGF 354L

DDGR RESILIENT 275D
 GMF 034H
 GMF MENG 57C

TMMW DESTINATION 82Y
 DRGF 748E
 ABF 5007R

REG #:	1601575
BD:	9/23/2023
BW:	66
WW:	519

CE	BW	WW	YW	MK	TM	CEM	ST	DOC	CW	REA	MB	\$C	FPI	EPI	
11	-3.1	56	92	23	51	7	23	14	19	.42	.26	153.36	73.13	97.30	
BREED PERCENTILE RANKING PER EPD															
75	3	>95	80	50	90	35	1	10	85	90	35	3	75	35	
Breed %	88GV 12AN				OWNER:					Duck River Gelbvieh					

PB Gelbvieh Homo Black Homo Polled **406**
HRZN L108

DCH HILLE D453
 GLM HASHTAG# H11
 GLM W55

GMF FORTUNE 616D
 HRZN J257
 HRZN D405

REG #:	1599579
BD:	9/16/2023
BW:	76
WW:	527

CE	BW	WW	YW	MK	TM	CEM	ST	DOC	CW	REA	MB	\$C	FPI	EPI	
16	-2.0	66	96	21	54	9	19	16	30	.52	.41	134.40	82.02	123.81	
BREED PERCENTILE RANKING PER EPD															
10	10	70	75	70	10	10	2	45	80	15	20	25	10		
Breed %	94GV 6AN				OWNER:					Horizon Farms					

PB Gelbvieh Homo Black Homo Polled **410**
TMMW Mr Hole In One 153L

KHR 79B
 TMMW HOLE IN ONE 93D
 TMMW BEETHOVENS MISS PRIDE 3A

DCH HILLE STOCK OPTIONS D410
 TMMW MISS STOCK OPTIONS 112G
 TMMW GRANITES MISS COCOA 259X

REG #:	1591310
BD:	9/23/2023
BW:	66
WW:	687

CE	BW	WW	YW	MK	TM	CEM	ST	DOC	CW	REA	MB	\$C	FPI	EPI	
12	0.2	82	115	29	70	8	19	12	31	.76	.06	135.67	79.88	131.83	
BREED PERCENTILE RANKING PER EPD															
55	55	10	25	10	3	20	10	45	45	30	90	20	35	5	
Breed %	95GV 5AN				OWNER:					Mulroy Farms LLC					

PB Gelbvieh Homo Black Homo Polled **407**
TMMW Mr Stock Options 134L

CCRO CAROLINA LEVERAGE 3214A
 DCH HILLE STOCK OPTIONS D410
 DCH HILLE B189 ET

TMMW HOLE IN ONE 93D
 TMMW MISS HOLE IN ONE 162G
 TMMW GOVENORS MS AUGUST 262X

REG #:	1591292
BD:	9/16/2023
BW:	70
WW:	678

CE	BW	WW	YW	MK	TM	CEM	ST	DOC	CW	REA	MB	\$C	FPI	EPI	
14	0.7	94	130	26	72	8	20	14	37	.77	.25	147.24	91.27	150.19	
BREED PERCENTILE RANKING PER EPD															
30	65	1	5	25	2	20	5	10	20	25	40	10	3	2	
Breed %	99.9GV				OWNER:					Mulroy Farms LLC					

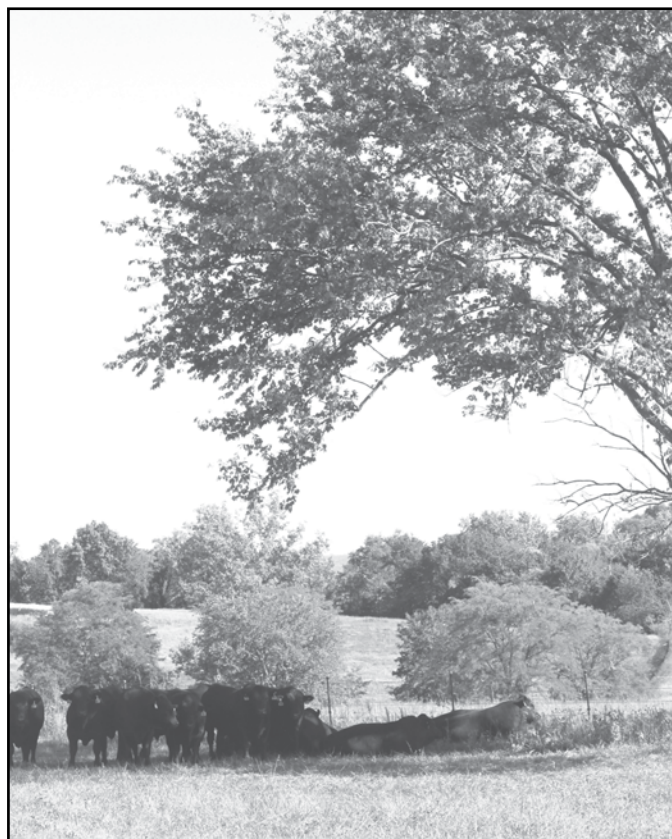
PB Gelbvieh Homo Black Homo Polled **408**
HRZN L120

DCH HILLE D453
 GLM HASHTAG# H11
 GLM W55

DCH HILLE STOCK OPTIONS D410
 HRZN J357
 HRZN F359

REG #:	1599584
BD:	9/22/2023
BW:	70
WW:	545

CE	BW	WW	YW	MK	TM	CEM	ST	DOC	CW	REA	MB	\$C	FPI	EPI	
16	-1.1	71	101	24	59	9	18	13	22	.86	.11	132.43	77.31	124.68	
BREED PERCENTILE RANKING PER EPD															
10	25	50	60	40	45	10	20	25	80	15	80	25	50	10	
Breed %	94GV 6AN				OWNER:					Horizon Farms					



GELBVIEWH BULLS

PB Gelbvieh Homo Black Homo Polled **411**
TMMW Mr Guardian 156L

KHR 96D
 KHR 22J
 KHR 967G

TMMW HOLE IN ONE 93D
 TMMW MISS HOLE IN ONE 215J
 TMMW GOVENORS MISSY 9181W

REG #:	1591315
BD:	9/24/2023
BW:	65
WW:	665

CE	BW	WW	YW	MK	TM	CEM	ST	DOC	CW	REA	MB	\$C	FPI	EPI
16	-0.4	67	109	28	62	10	21	9	20	.88	.05	142.85	73.88	74.90
BREED PERCENTILE RANKING PER EPD														
10	40	65	40	10	30	3	2	95	85	10	90	10	70	65
Breed %	99.9GV		OWNER:		Mulroy Farms LLC									

PB Gelbvieh Homo Black Homo Polled **414**
HRZN L150

DCH HILLE D453
 GLM HASHTAG# H11
 GLM W55

SKF DUNNS ESCANDER 023E
 HRZN H394
 HRZN D932

REG #:	1599574
BD:	10/10/2023
BW:	81
WW:	610

CE	BW	WW	YW	MK	TM	CEM	ST	DOC	CW	REA	MB	\$C	FPI	EPI
15	0.3	75	117	23	61	8	19	10	40	.89	.38	141.29	84.73	148.98
BREED PERCENTILE RANKING PER EPD														
20	55	30	25	50	35	20	10	85	15	10	15	10	15	2
Breed %	88GV 12AN		OWNER:		Horizon Farms									

PB Gelbvieh Black Homo Polled **412**
TMGC SB Barcelona 281L

CCRO CAROLINA LEVERAGE 3214A
 TMGC SB FORMULA 12E
 TMGC SB DANIELLE 07C

TMGC SB GIBRALTOR 37B
 TMGC SB BELLA 245F
 TMGC 302X

REG #:	1588055
BD:	9/24/2023
BW:	70
WW:	638

CE	BW	WW	YW	MK	TM	CEM	ST	DOC	CW	REA	MB	\$C	FPI	EPI
16	-0.7	76	116	24	62	9	13	11	44	1.21	.38	102.75	86.65	145.75
BREED PERCENTILE RANKING PER EPD														
10	30	25	25	40	30	10	85	70	10	1	15	80	10	3
Breed %	83GV 17AN		OWNER:		Stuecken Bros									

PB Gelbvieh Homo Black Homo Polled **415**
DRGF 367L

DDGR RESILIENT 275D
 GMF 034H
 GMF MENG 57C

ZJC HOSS 30W ET
 DRGF 246Z
 SNB MABLE 745T

REG #:	1601556
BD:	10/11/2023
BW:	66
WW:	601

CE	BW	WW	YW	MK	TM	CEM	ST	DOC	CW	REA	MB	\$C	FPI	EPI
15	0.3	70	106	26	60	8	14	16	32	.75	.08	96.46	73.64	100.97
BREED PERCENTILE RANKING PER EPD														
20	55	55	50	25	40	20	75	2	40	30	85	90	70	30
Breed %	88GV 12AN		OWNER:		Duck River Gelbvieh									

PB Gelbvieh Homo Black Homo Polled **413**
TMMW Mr Guardian 187L

KHR 96D
 KHR 22J
 KHR 967G

TMMW HOLE IN ONE 93D
 TMMW MISS HOLE IN ONE 166F
 TMMW MISS GOVENOR 129Z

REG #:	1591345
BD:	10/9/2023
BW:	79
WW:	662

CE	BW	WW	YW	MK	TM	CEM	ST	DOC	CW	REA	MB	\$C	FPI	EPI
14	-0.3	69	111	29	63	9	15	12	19	.55	.22	113.76	78.29	90.46
BREED PERCENTILE RANKING PER EPD														
30	40	60	35	10	25	10	60	45	85	75	50	60	45	45
Breed %	94GV 6AN		OWNER:		Mulroy Farms LLC									

PB Gelbvieh Homo Black Homo Polled **416**
HRZN L158

DCH HILLE D453
 GLM HASHTAG# H11
 GLM W55

BWF BRANDYWINE ZACK 201Z
 HRZN E120
 HRZN C182

REG #:	1599544
BD:	10/12/2023
BW:	77
WW:	716

CE	BW	WW	YW	MK	TM	CEM	ST	DOC	CW	REA	MB	\$C	FPI	EPI
15	-0.9	89	130	28	72	9	23	24	45	.73	.28	161.17	91.56	158.56
BREED PERCENTILE RANKING PER EPD														
20	30	2	5	10	2	10	1	1	10	35	35	1	3	2
Breed %	87GV 13AN		OWNER:		Horizon Farms									



PB Gelbvieh Homo Black Homo Polled **417**
TMMW Mr Guardian 198L

KHR 96D
 KHR 22J
 KHR 967G

TMMW HOLE IN ONE 93D
 TMMW MISS HOLE IN ONE 199J
 TMMW GOVENORS MISS KRUGER 296X

REG #:	1591359
BD:	10/25/2023
BW:	71
WW:	647

CE	BW	WW	YW	MK	TM	CEM	ST	DOC	CW	REA	MB	\$C	FPI	EPI
14	-0.9	71	106	26	61	9	16	12	6	.44	.53	117.34	86.71	81.54
BREED PERCENTILE RANKING PER EPD														
30	30	50	50	25	35	10	45	45	>95	90	3	50	10	55
Breed %	95GV 5AN		OWNER:		Mulroy Farms LLC									

GELBVIEH BULLS

PB Gelbvieh Homo Black Homo Polled **418**
TMMW Mr Hole In One 207L

KHR 79B
 TMMW HOLE IN ONE 93D
 TMMW BEETHOVENS MISS PRIDE 3A

JKGF 43U
 TMMW MISS GRANITE 162A
 TMMW FORTUNES EXTRA LADY 922W

REG #:	1591368
BD:	11/15/2023
BW:	73
WW:	706

CE	BW	WW	YW	MK	TM	CEM	ST	DOC	CW	REA	MB	\$C	FPI	EPI
13	1.1	79	114	26	65	8	20	14	20	.36	-.01	141.55	75.32	129.32
BREED PERCENTILE RANKING PER EPD														
40	75	20	30	25	15	20	5	10	85	95	95	10	60	10
Breed %		95GV 5AN			OWNER:			Mulroy Farms LLC						



PB Gelbvieh Homo Black Homo Polled **419**
WAAL 71L

DLW TPG FRONTRUNNER 2510F
 TJB TAYD GLADIATOR J141 ET
 TJB ANISSA 921U 579C ET

HYEK BLACK IMPACT 3960N
 WAAL MS L&L BLACK IMPACT 71E
 SBSF BEE LICK BAYLEE

REG #:	1584672
BD:	11/19/2023
BW:	83
WW:	712

CE	BW	WW	YW	MK	TM	CEM	ST	DOC	CW	REA	MB	\$C	FPI	EPI
15	-4.0	72	102	24	61	7	16	9	15	.66	.27	121.42	84.78	91.32
BREED PERCENTILE RANKING PER EPD														
20	1	45	60	40	35	35	45	95	95	50	35	45	15	45
Breed %		91GV 9AN			OWNER:			L & L Gelbvieh						

PB Gelbvieh Homo Black Homo Polled **422**
WAAL 2062L

DLW TPG FRONTRUNNER 2510F
 TJB TAYD GLADIATOR J141 ET
 TJB ANISSA 921U 579C ET

CMGF CLINCH MT EXCLUSIVE 1718E
 CCRO CAROLINA 2062J
 CCRO CAROLINA 7161E

REG #:	1587355
BD:	12/23/2023
BW:	78
WW:	764

CE	BW	WW	YW	MK	TM	CEM	ST	DOC	CW	REA	MB	\$C	FPI	EPI
12	-1.3	81	123	27	67	6	21	8	15	.67	.37			89.08
BREED PERCENTILE RANKING PER EPD														
55	20	15	15	15	10	55	2	>95	95	45	20			5
Breed %		84GV 13AN 3XX			OWNER:			L & L Gelbvieh						

PB Gelbvieh Homo Black Homo Polled **420**
WAAL 711L

DLW TPG FRONTRUNNER 2510F
 TJB TAYD GLADIATOR J141 ET
 TJB ANISSA 921U 579C ET

CRRF X54
 CRRF E711
 JBOB 5711R ET

REG #:	1584674
BD:	11/20/2023
BW:	67
WW:	567

CE	BW	WW	YW	MK	TM	CEM	ST	DOC	CW	REA	MB	\$C	FPI	EPI
17	-2.5	66	93	23	56	10	18	12	5	.44	.43			83.45
BREED PERCENTILE RANKING PER EPD														
5	10	70	80	50	65	3	20	45	>95	90	10			20
Breed %		91GV 9AN			OWNER:			L & L Gelbvieh						

PB Gelbvieh Homo Black Polled **423**
SKF Dunn's Key West Time 006M

MLLC M/L ENCORE 493E
 JOB DANELL OL' TIMER 19J
 JOB DANELL ROSA 19F

TMMW DESTINATION 82Y
 SKF DUNN'S MS KEY WEST K230 ET
 SKF DUNNS MISS SANDY 166Y

REG #:	1603622
BD:	1/10/2024
BW:	69
WW:	634

CE	BW	WW	YW	MK	TM	CEM	ST	DOC	CW	REA	MB	\$C	FPI	EPI
16	-2.3	68	111	23	57	10	15	14	21	.49	.49	118.31	86.25	102.54
BREED PERCENTILE RANKING PER EPD														
10	10	60	35	50	60	3	60	10	80	85	5	50	10	30
Breed %		94GV 6AN			OWNER:			Sandy Knoll Farm						

PB Gelbvieh Homo Black Homo Polled **421**
WAAL 9L

DLW TPG FRONTRUNNER 2510F
 TJB TAYD GLADIATOR J141 ET
 TJB ANISSA 921U 579C ET

ADS MR S & S ASTRO 552C ET
 WAAL MS L&L 9E
 HRRR 9B

REG #:	1584676
BD:	11/21/2023
BW:	69
WW:	502

CE	BW	WW	YW	MK	TM	CEM	ST	DOC	CW	REA	MB	\$C	FPI	EPI
16	-3.3	69	104	23	57	8	19	11	15	.57	.41			86.07
BREED PERCENTILE RANKING PER EPD														
10	3	60	55	50	60	20	10	70	95	70	15			15
Breed %		91GV 9AN			OWNER:			L & L Gelbvieh						

PB Gelbvieh Homo Black Homo Polled **424**
SKF Dunn's Business Time 013M

MLLC M/L ENCORE 493E
 JOB DANELL OL' TIMER 19J
 JOB DANELL ROSA 19F

WAHL 004H ET
 SKF DUNN'S MISS KYLIE 2K23
 SKF DUNN'S MS GOVERNESS F807

REG #:	1603601
BD:	1/15/2024
BW:	76
WW:	665

CE	BW	WW	YW	MK	TM	CEM	ST	DOC	CW	REA	MB	\$C	FPI	EPI
11	0.9	82	131	25	66	7	18	12	48	.66	.45	133.46	88.44	100.38
BREED PERCENTILE RANKING PER EPD														
75	70	10	5	30	10	35	20	45	3	50	10	20	10	30
Breed %		99.9GV			OWNER:			Sandy Knoll Farm						

GELBVIEW BULLS



PB Gelbvieh Homo Black Homo Polled 428- SKF Dunn's Advantageous 043M ET

TMMW DESTINATION 82Y
SKF DUNN'S DESTINY 056F
SKF DUNNS MS GOVENORESS 5C28

REG #:	1608173
BD:	2/1/2024
BW:	ET
WW:	ET

ISDR GOBLIN ADVANTAGE
SKF DUNN'S MISS WARNA 962W
SKF MISS EXCLUSIVE 02L

CE	BW	WW	YW	MK	TM	CEM	ST	DOC	CW	REA	MB	\$C	FPI	EPI
15	-1.8	55	85	22	49	8	18	15	25	.56	.79	143.16	84.82	112.47
BREED PERCENTILE RANKING PER EPD														
20	15	>95	95	60	95	20	20	4	70	70	1	10	15	20
Breed %		99.9GV			OWNER:				Sandy Knoll Farm					

PB Gelbvieh Homo Black Homo Polled 425- SKF Dunn's Destiny Time 016M

MLLC M/L ENCORE 493E
JOB DANELL OL' TIMER 19J
JOB DANELL ROSA 19F

REG #:	1603560
BD:	1/17/2024
BW:	60
WW:	600

SKF DUNNS DESTINY 056F
SKF DUNN'S MISS DESTINY 232K
SKF DUNNS MISS GOOD TIMES 984G

CE	BW	WW	YW	MK	TM	CEM	ST	DOC	CW	REA	MB	\$C	FPI	EPI
20	-2.3	68	106	23	57	11	19	11	14	.62	.40	141.61	85.08	95.74
BREED PERCENTILE RANKING PER EPD														
1	10	60	50	50	60	1	10	70	95	60	15	10	15	35
Breed %		99.9GV			OWNER:				Sandy Knoll Farm					

PB Gelbvieh Homo Black Homo Polled 429- IAND Dunn's Top Departure 047M

KCF BENNETT E158
TAU TOP SHELF 150H ET
TAU MS GUNNISON 106R 3051A

REG #:	1603468
BD:	2/3/2024
BW:	81
WW:	649

SKF DUNNS DEPARTURE 052D
PRD DUNNS MISS DEPARTURE 0H42
SKF DUNNS MISS JACKPOT 572C

CE	BW	WW	YW	MK	TM	CEM	ST	DOC	CW	REA	MB	\$C	FPI	EPI
16	-1.5	76	120	24	62	8	17	10	43	1.01	.30		86.08	
BREED PERCENTILE RANKING PER EPD														
10	20	25	15	40	30	20	30	85	10	3	30	15		
Breed %		99.9GV			OWNER:				Sandy Knoll Farm					

PB Gelbvieh Double Black* Homo Polled 426- SKF Dunn's Ol' Destiny 018M

MLLC M/L ENCORE 493E
JOB DANELL OL' TIMER 19J
JOB DANELL ROSA 19F

REG #:	1603572
BD:	1/17/2024
BW:	72
WW:	773

SKF DUNNS DESTINY 056F
SKF DUNN'S MISS DESTINY 250K
SKF DUNN'S MISS SANDTRAP 962G ET

CE	BW	WW	YW	MK	TM	CEM	ST	DOC	CW	REA	MB	\$C	FPI	EPI
14	-0.1	74	112	28	65	8	14	12	22	.63	.49	107.32	87.41	107.35
BREED PERCENTILE RANKING PER EPD														
30	45	35	35	10	15	20	75	45	80	55	5	75	10	25
Breed %		99.9GV			OWNER:				Sandy Knoll Farm					

* COAT COLOR IS PENDING A RE-TEST

PB Gelbvieh Homo Black Homo Polled 430- SKF Dunn's Sandy Logic 048M

KCF BENNETT E158
TMGC SB NEW LOGIC 147H
TMGC SB PEARL 321Z

REG #:	1603475
BD:	2/4/2024
BW:	88
WW:	715

DBRG MR TWISTER 7207E ET
SKF DUNN'S MISS SANDY TWISTER 0H72
SKF DUNNS MISS SANDY BUSINESS 7E16

CE	BW	WW	YW	MK	TM	CEM	ST	DOC	CW	REA	MB	\$C	FPI	EPI
14	-0.6	78	114	28	67	8	17	14	25	.93	.35	123.79	87.16	213.90
BREED PERCENTILE RANKING PER EPD														
30	35	20	30	10	10	20	30	10	70	10	20	40	10	1
Breed %		94GV 6AN			OWNER:				Sandy Knoll Farm					

PB Gelbvieh Homo Black Homo Polled 427- GMF Romance 411M

JKGF C517
RNBG RONAN 49G4
RNBG TRIPLE H MS BLK LACE 49B2

REG #:	1604611
BD:	1/31/2024
BW:	87
WW:	566

GMF 350A
GMF MENG 762E
GVC ZARLA Z22

CE	BW	WW	YW	MK	TM	CEM	ST	DOC	CW	REA	MB	\$C	FPI	EPI
12	-0.1	76	112	25	63	8	19	14	34	.54	.70	128.47	92.22	120.44
BREED PERCENTILE RANKING PER EPD														
55	45	25	35	30	25	20	10	10	30	75	1	30	2	15
Breed %		94GV 6AN			OWNER:				Meng Farms Cattle Company					

RETAINING 50% POSSESSION & 50% INTEREST

PB Gelbvieh Black Homo Polled 431- SKF Dunn's Black Jubal 064M ET

BNC AT EASE A357
BNW PLAINSMAN JUBAL 1104J
BNW DESERT ROSE 9001G

REG #:	1608172
BD:	2/7/2024
BW:	ET
WW:	ET

ISDR GOBLIN ADVANTAGE
SKF DUNN'S MISS WARNA 962W
SKF MISS EXCLUSIVE 02L

CE	BW	WW	YW	MK	TM	CEM	ST	DOC	CW	REA	MB	\$C	FPI	EPI
17	-0.6	69	103	27	61	8	22	12	16	.70	.58	156.49	88.09	77.87
BREED PERCENTILE RANKING PER EPD														
5	35	60	55	15	35	20	1	45	95	40	2	2	10	60
Breed %		99.9GV			OWNER:				Sandy Knoll Farm					

GELBVIEW BULLS

PB Gelbvieh Homo Black Polled
SKF Dunn's Good Logic 070M

432

KCF BENNETT E158
 TMGC SB NEW LOGIC 147H
 TMGC SB PEARL 321Z

REG #:	1603849
BD:	2/7/2024
BW:	87
WW:	697

TMGC SB GOOD BUSINESS 143B
 SKF DUNN'S MISS GOOD TIMES 984G
 SKF DUNNS MISS FINE CHINA 625D ET

CE	BW	WW	YW	MK	TM	CEM	ST	DOC	CW	REA	MB	\$C	FPI	EPI
13	-0.7	80	129	26	66	7	23	16	28	.73	.48	160.40	91.16	245.16
BREED PERCENTILE RANKING PER EPD														
40	30	15	10	25	10	35	1	2	55	35	5	1	3	1
Breed %		88GV 12AN			OWNER:		Sandy Knoll Farm							

PB Gelbvieh Homo Black Homo Polled
SKF Dunn's Diamond Jackpot 066M ET

436

CCRO CAROLINA LEVERAGE 3214A
 DMI BLACK DIAMOND 88F ET
 DMI 723T

REG #:	1608170
BD:	2/8/2024
BW:	ET
WW:	ET

TMMW DESTINATION 82Y
 SKF DUNN'S MS FLORENTINE 873F
 SKF DUNNS MISS JACKPOT 569C

CE	BW	WW	YW	MK	TM	CEM	ST	DOC	CW	REA	MB	\$C	FPI	EPI
13	-1.5	68	105	26	60	9	19	13	24	.70	.45	142.97	83.98	98.20
BREED PERCENTILE RANKING PER EPD														
40	20	60	50	25	40	10	10	25	70	40	10	10	20	35
Breed %		99.9GV			OWNER:		Sandy Knoll Farm							

PB Gelbvieh Homo Black Polled
SKF Dunn's Hard Justice 051M

433

JKGF CHIEF JUSTICE C205
 DBRG MR CHIEF JUSTICE 1525J ET
 DBRG MS TWISTER 8167F ET

REG #:	1603688
BD:	2/7/2024
BW:	88
WW:	712

MCFG LETHAL HARDWARE 140A
 SKF DUNN'S MISS HARDWARE 527C
 SKF DUNNS MISS QUIVIRA 067X

CE	BW	WW	YW	MK	TM	CEM	ST	DOC	CW	REA	MB	\$C	FPI	EPI
14	-2.5	68	109	29	63	7	20	14	27	.83	.24	145.87	80.95	109.57
BREED PERCENTILE RANKING PER EPD														
30	10	60	40	10	25	35	5	10	60	15	40	10	30	20
Breed %		88GV 12AN			OWNER:		Sandy Knoll Farm							

PB Gelbvieh Homo Black Homo Polled
SKF Dunn's Logical Sam 071M

437

KCF BENNETT E158
 TMGC SB NEW LOGIC 147H
 TMGC SB PEARL 321Z

REG #:	1603683
BD:	2/8/2024
BW:	89
WW:	691

VRT LAZY TV SAM U451
 SKF DUNN'S MISS SAM 514C
 SKF DUNNS MISS BLACK SANDY 322A

CE	BW	WW	YW	MK	TM	CEM	ST	DOC	CW	REA	MB	\$C	FPI	EPI
12	0.8	82	130	25	66	6	18	17	28	.57	.44	128.48	89.06	229.42
BREED PERCENTILE RANKING PER EPD														
55	70	10	5	30	10	55	20	1	55	70	10	30	5	1
Breed %		88GV 12AN			OWNER:		Sandy Knoll Farm							

PB Gelbvieh Black Homo Polled
SKF Dunn's Old School Business 062M ET

434

FHG FLYING H CADILLAC 184C
 GKT BOO BOO 155E
 CCD X55

REG #:	1608174
BD:	2/7/2024
BW:	ET
WW:	ET

TMGC SB GOOD BUSINESS 143B
 SKF DUNN'S MISS ELIZA JANE 7E30
 SKF DUNNS MISS GOVENOR 136Y

CE	BW	WW	YW	MK	TM	CEM	ST	DOC	CW	REA	MB	\$C	FPI	EPI
14	1.8	68	109	21	55	7	19	11	18	.58	.48	138.68	80.42	76.56
BREED PERCENTILE RANKING PER EPD														
30	90	60	40	70	70	35	10	70	90	70	5	15	35	60
Breed %		99.9GV			OWNER:		Sandy Knoll Farm							

PB Gelbvieh Homo Black Homo Polled
SKF Dunn's Top Twister 061M

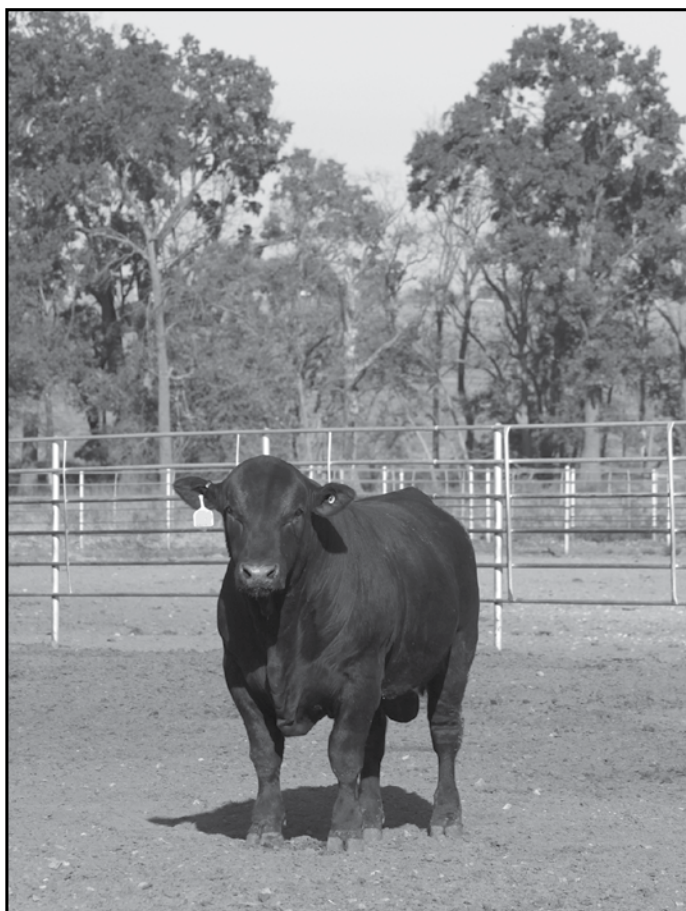
435

KCF BENNETT E158
 TAU TOP SHELF 150H ET
 TAU MS GUNNISON 106R 3051A

REG #:	1603486
BD:	2/7/2024
BW:	83
WW:	643

JOB DANELL NAPOLEON 01E
 SKF DUNN'S MISS NAPOLEON 122J
 SKF DUNNS MISS TWISTERTIME 961G

CE	BW	WW	YW	MK	TM	CEM	ST	DOC	CW	REA	MB	\$C	FPI	EPI
15	-0.9	81	113	24	65	8	13	8	36	1.12	.18		84.87	
BREED PERCENTILE RANKING PER EPD														
20	30	15	30	40	15	20	85	>95	25	1	60		15	
Breed %		99.9GV			OWNER:		Sandy Knoll Farm							



GELBVIEWH BULLS

PB Gelbvieh Homo Black Homo Polled **438**
SKF **Dunn's New Logic 069M**

KCF BENNETT E158
 TMGC SB NEW LOGIC 147H
 TMGC SB PEARL 321Z

SKF DUNNS DEPARTURE 052D
 SKF DUNNS MS DEPARTURE F817
 SKF DUNNS MISS CHLOE 5C13

REG #:	1603879
BD:	2/9/2024
BW:	77
WW:	649

CE	BW	WW	YW	MK	TM	CEM	ST	DOC	CW	REA	MB	\$C	FPI	EPI
16	-1.0	77	118	22	61	8	21	14	25	.78	.37	150.00	87.23	215.16
BREED PERCENTILE RANKING PER EPD														
10	25	25	20	60	35	20	2	10	70	25	20	4	10	1
Breed %		94GV 6AN			OWNER:		Sandy Knoll Farm							

PB Gelbvieh Homo Black Homo Polled **442**
SKF **Dunn's Exclusive Hashtag 109M**

DCH HILLE D453
 GLM HASHTAG# H11
 GLM W55

TMMW DESTINATION 82Y
 SKF DUNNS MS DESTINATION 858F ET
 SKF MISS ENCLUSIVE 301N

REG #:	1603803
BD:	2/17/2024
BW:	80
WW:	803

CE	BW	WW	YW	MK	TM	CEM	ST	DOC	CW	REA	MB	\$C	FPI	EPI
18	-0.9	80	126	27	67	10	23	17	37	.52	.36	162.89	89.15	166.95
BREED PERCENTILE RANKING PER EPD														
3	30	15	10	15	10	3	1	1	20	80	20	1	5	1
Breed %		99.9GV			OWNER:		Sandy Knoll Farm							

PB Gelbvieh Homo Black Homo Polled **439**
SKF **Dunn's Business Logic 096M**

KCF BENNETT E158
 TMGC SB NEW LOGIC 147H
 TMGC SB PEARL 321Z

TMGC SB GOOD BUSINESS 143B
 SKF DUNNS MS GOOD BUSINESS 8F56
 SKF DUNNS MISS SANDY 1Y13

REG #:	1603827
BD:	2/14/2024
BW:	81
WW:	653

CE	BW	WW	YW	MK	TM	CEM	ST	DOC	CW	REA	MB	\$C	FPI	EPI
13	-1.5	72	108	22	58	7	24	13	17	.51	.37	165.43	83.54	201.87
BREED PERCENTILE RANKING PER EPD														
40	20	45	45	60	55	35	1	25	90	80	20	1	20	1
Breed %		88GV 12AN			OWNER:		Sandy Knoll Farm							

PB Gelbvieh Homo Black Homo Polled **443**
SKF **Dunn's Super Logic 112M**

KCF BENNETT E158
 TMGC SB NEW LOGIC 147H
 TMGC SB PEARL 321Z

TMGC SB GOOD BUSINESS 143B
 SKF DUNNS MISS SANDY BUSINESS 7E12
 SKF DUNNS MISS HERCULES 3A35

REG #:	1603767
BD:	2/18/2024
BW:	87
WW:	642

CE	BW	WW	YW	MK	TM	CEM	ST	DOC	CW	REA	MB	\$C	FPI	EPI
10	-0.2	74	104	21	58	5	27	14	17	.65	.38	180.15	82.30	194.29
BREED PERCENTILE RANKING PER EPD														
85	45	35	55	70	55	75	1	10	90	50	15	1	25	1
Breed %		94GV 6AN			OWNER:		Sandy Knoll Farm							

PB Gelbvieh Homo Black Homo Polled **440**
SKF **Dunn's Grand Destiny 107M**

TMMW DESTINATION 82Y
 SKF DUNNS DESTINY 056F
 SKF DUNNS MS GOVENORESS 5C28

FHG FLYING H GRAND SLAM 128D ET
 SKF DUNNS MS GRAND SLAM 857F
 SKF DUNNS MS CATHERINE 5C45

REG #:	1603802
BD:	2/16/2024
BW:	80
WW:	612

CE	BW	WW	YW	MK	TM	CEM	ST	DOC	CW	REA	MB	\$C	FPI	EPI
15	-1.4	49	78	21	46	9	20	12	17	.67	.61	154.72	76.99	70.90
BREED PERCENTILE RANKING PER EPD														
20	20	>95	>95	70	>95	10	5	45	90	45	1	3	50	70
Breed %		99.9GV			OWNER:		Sandy Knoll Farm							

PB Gelbvieh Black Homo Polled **444**
SKF **Dunn's Ideal Departure 147M**

CCRO CAROLINA LEVERAGE 3214A
 WAHL 004H ET
 FHG FLYING H MS LEGACY 48Y

SKF DUNNS DEPARTURE 052D
 SKF DUNNS MISS DEPARTURE 099H
 SKF DUNNS MISS HARDWARE 527C

REG #:	1603458
BD:	2/28/2024
BW:	78
WW:	702

CE	BW	WW	YW	MK	TM	CEM	ST	DOC	CW	REA	MB	\$C	FPI	EPI
14	-4.0	64	99	28	60	9	23	13	29	.37	.62	165.63	88.47	101.57
BREED PERCENTILE RANKING PER EPD														
30	1	80	65	10	40	10	1	25	50	95	1	1	10	30
Breed %		88GV 12AN			OWNER:		Sandy Knoll Farm							

PB Gelbvieh Homo Black Polled **441**
SKF **Dunn's Sandy Logic 108M**

KCF BENNETT E158
 TMGC SB NEW LOGIC 147H
 TMGC SB PEARL 321Z

VRT LAZY TV SAM U451
 SKF DUNNS MISS SAM 815F
 SKF DUNNS MISS BLACK SANDY 6D36

REG #:	1603788
BD:	2/16/2024
BW:	76
WW:	726

CE	BW	WW	YW	MK	TM	CEM	ST	DOC	CW	REA	MB	\$C	FPI	EPI
16	-0.4	77	118	26	65	8	18	18	26	.63	.42	134.20	88.18	210.57
BREED PERCENTILE RANKING PER EPD														
10	40	25	20	25	15	20	20	1	65	55	10	20	10	1
Breed %		94GV 6AN			OWNER:		Sandy Knoll Farm							

PB Gelbvieh Homo Black Polled **445**
SKF **Dunn's Chief Destiny 152M**

JKGF CHIEF JUSTICE C205
 DBRG MR CHIEF JUSTICE 1525J ET
 DBRG MS TWISTER 8167F ET

SKF DUNNS DESTINY 056F
 SKF DUNNS MISS DESTINY 1J07
 SKF DUNNS MISS HARDWARE 660D ET

REG #:	1603535
BD:	2/29/2024
BW:	88
WW:	784

CE	BW	WW	YW	MK	TM	CEM	ST	DOC	CW	REA	MB	\$C	FPI	EPI
11	-0.2	77	125	26	64	5	18	14	44	.89	.39	138.39	85.78	126.82
BREED PERCENTILE RANKING PER EPD														
75	45	25	10	25	20	75	20	10	10	15	15	15	15	10
Breed %		94GV 6AN			OWNER:		Sandy Knoll Farm							

GELBVIEW BULLS

PB Gelbvieh Black Homo Polled **446**
SKF Dunn's Ideal Destiny 154M

CCRO CAROLINA LEVERAGE 3214A
 WAHL 004H ET
 FHG FLYING H MS LEGACY 48Y

SKF DUNNS DESTINY 056F
 SKF DUNNS MISS DESTINY 1J08
 SKF DUNNS MISS BETSY 4B19

REG #:	1603536
BD:	2/29/2024
BW:	75
WW:	687

CE	BW	WW	YW	MK	TM	CEM	ST	DOC	CW	REA	MB	\$C	FPI	EPI
13	-1.0	72	108	25	61	10	18	13	34	.49	.75	147.83	92.59	92.18
BREED PERCENTILE RANKING PER EPD														
40	25	45	45	30	35	3	20	25	30	85	1	5	2	40
Breed %	94GV 6AN				OWNER:	Sandy Knoll Farm								

PB Gelbvieh Homo Black Homo Polled **448**
BVC Chief Barlo 357M

TMGC SB FORMULA 12E
 TMGC SB BARCELONA 124H
 TMGC SB HILDA 44D

JKGF CHIEF JUSTICE C205
 BVC 54H ET
 DPWG 16X

REG #:	1609091
BD:	3/9/2024
BW:	80
WW:	778

CE	BW	WW	YW	MK	TM	CEM	ST	DOC	CW	REA	MB	\$C	FPI	EPI
17	-1.1	76	108	24	62	10	17	11	23	.47	.75	126.11	95.49	116.12
BREED PERCENTILE RANKING PER EPD														
5	25	25	45	40	30	3	30	70	75	85	1	35	1	15
Breed %	82GV 18AN				OWNER:	Bryce Famly Farms LLC								

PB Gelbvieh Homo Black Homo Polled **447**
JEB BCC Profit Margin M410 ET

CCRO CAROLINA LEVERAGE 3214A
 DCH HILLE STOCK OPTIONS D410
 DCH HILLE B189 ET

TMMW DESTINATION 82Y
 JEB BCC DR DESTINY 208F
 JEB BCC MISS BALANCE 38R

REG #:	1614491
BD:	3/2/2024
BW:	ET
WW:	ET

CE	BW	WW	YW	MK	TM	CEM	ST	DOC	CW	REA	MB	\$C	FPI	EPI
12	1.7	86	132	21	64	7	17	13	53	.87	.37	126.49	87.35	163.12
BREED PERCENTILE RANKING PER EPD														
55	85	4	4	70	20	35	30	25	1	15	20	35	10	2
Breed %	94GV 6AN				OWNER:	Burbank Cattle Company								

PB Gelbvieh Homo Black Homo Polled **449**
SKF Dunn's Exclusive Logic 207M

KCF BENNETT E158
 TMGC SB NEW LOGIC 147H
 TMGC SB PEARL 321Z

TMMW DESTINATION 82Y
 SKF DUNNS MISS DESTINATION 946G
 SKF DUNNS MISS HARDWARE 660D ET

REG #:	1603843
BD:	3/21/2024
BW:	89
WW:	672

CE	BW	WW	YW	MK	TM	CEM	ST	DOC	CW	REA	MB	\$C	FPI	EPI
11	0.2	83	135	23	64	5	17	13	33	.82	.37	130.39	88.63	265.57
BREED PERCENTILE RANKING PER EPD														
75	55	10	3	50	20	75	30	25	35	20	20	25	10	1
Breed %	88GV 12AN				OWNER:	Sandy Knoll Farm								

OPEN HEIFERS

Balancer Double Black* Homo Polled **450**
SKF Dunn's Miss Cascade 484M

HCC WHITEWATER 9010
 BTBR CASCADE 2291 ET
 BTBR MS BLACK CROSS 5130

K C F BENNETT ABSOLUTE
 SKF DUNN'S MISS ABSOLUTE 805F
 SKF DUNN'S MISS JACKPOT 682D

REG #:	1603783
BD:	2/17/2024
BW:	78
WW:	673

CE	BW	WW	YW	MK	TM	CEM	ST	DOC	CW	REA	MB	\$C	FPI	EPI
17	0.3	89	156	28	73	9	17	12	63	1.02	.76			103.70
BREED PERCENTILE RANKING PER EPD														
10	70	5	2	15	3	15	20	50	3	1	3			1
Breed %	50GV 50AN				OWNER:	Sandy Knoll Farm								

* COAT COLOR RESULTS WILL BE AVAILABLE SALE DAY!

Balancer Homo Black Homo Polled **452**
JEB BCC Miss Saguaro 403M

TMMW DESTINATION 82Y
 BTBR SAGUARO 8111F ET
 JEB BCC MISS OBJECTIVE 41W

JEMG SILVER DOLLAR Z645
 JGPG EMMA 881F ET
 JGPG EMMA 275Z

REG #:	1609757
BD:	2/26/2024
BW:	76
WW:	624

CE	BW	WW	YW	MK	TM	CEM	ST	DOC	CW	REA	MB	\$C	FPI	EPI
11	2.2	85	136	24	66	7	17	12	43	.63	.62	122.00	92.80	155.05
BREED PERCENTILE RANKING PER EPD														
80	95	10	10	45	20	45	20	50	35	30	10	25	15	15
Breed %	64GV 36AN				OWNER:	Burbank Cattle / JGP Gelbvieh								

Balancer Double Black* Double Polled* **451**
SKF Dunn's Cascade Lady 4M27

HCC WHITEWATER 9010
 BTBR CASCADE 2291 ET
 BTBR MS BLACK CROSS 5130

KCF BENNETT B29
 SKF DUNNS MISS B29 BOMBER 912G
 SKF DUNN'S MISS FOCUSED 7313

REG #:	1603836
BD:	2/24/2024
BW:	75
WW:	771

CE	BW	WW	YW	MK	TM	CEM	ST	DOC	CW	REA	MB	\$C	FPI	EPI
21	-3.2	81	131	33	74	12	18	11	66	1.09	.74			103.91
BREED PERCENTILE RANKING PER EPD														
1	10	20	15	1	2	1	10	75	2	1	3			1
Breed %	50GV 50AN				OWNER:	Sandy Knoll Farm								

* COAT COLOR & POLLED TEST WILL BE AVAILABLE SALE DAY!

Balancer Homo Black Homo Polled **453**
JEB BCC Ms Civil War M406 ET

V A R DISCOVERY 2240
 JKGF CIVIL WAR E92
 JKGF LOTTIE C92

BNG OVERTIME 23Y
 JEB BCC MISS BALANCE 41A
 BWF BRANDYWINE NINETTE 313N

REG #:	1614503
BD:	2/28/2024
BW:	ET
WW:	ET

CE	BW	WW	YW	MK	TM	CEM	ST	DOC	CW	REA	MB	\$C	FPI	EPI
13	-1.0	81	127	25	65	8	20	16	39	.62	.40	142.97	89.09	159.51
BREED PERCENTILE RANKING PER EPD														
50	40	20	25	35	25	30	3	2	45	30	45	3	25	15
Breed %	50GV 50AN				OWNER:	Burbank Cattle Company								

OPEN HEIFERS

Balancer Double Black* Homo Polled **454**
SKF Dunn's Sandy Cascade 4M65

HCC WHITEWATER 9010
 BTBR CASCADE 2291 ET
 BTBR MS BLACK CROSS 5130

SKF DUNN'S 2ND NEW LEVEL 071D ET
 SKF DUNN'S MS BLACK SANDY 8F97
 SKF DUNN'S MISS BLACK SANDY 6D65

REG #:	1603832
BD:	2/29/2024
BW:	73
WW:	650

CE	BW	WW	YW	MK	TM	CEM	ST	DOC	CW	REA	MB	\$C	FPI	EPI
20	-1.5	78	130	28	68	11	18	9	52	.75	.65		97.10	
BREED PERCENTILE RANKING PER EPD														
1	30	30	20	15	15	3	10	95	15	15	10		5	
Breed %			63GV 37AN	OWNER:		Sandy Knoll Farm								

* COAT COLOR RESULTS WILL BE AVAILABLE SALE DAY!

PB Gelbvieh Homo Black Homo Polled **458**
DMP M047

CCRO CAROLINA LEVERAGE 3214A
 DCH HILLE STOCK OPTIONS D410
 DCH HILLE B189 ET

CCRO CAROLINA COMMOTION 6230D
 DMP K047
 DMP E047

REG #:	1606186
BD:	3/16/2024
BW:	72
WW:	677

CE	BW	WW	YW	MK	TM	CEM	ST	DOC	CW	REA	MB	\$C	FPI	EPI
13	1.5	99	156	26	76	7	14	15	49	1.00	.32	117.22	96.23	161.17
BREED PERCENTILE RANKING PER EPD														
45	85	1	1	25	1	35	75	4	3	3	25	50	1	2
Breed %			90GV 10AN	OWNER:		Pederson Gelbvieh								

Balancer Homo Black Homo Polled **455**
JEB BCC Miss Moonshiner 420M

SYDGEN ENHANCE
 MSHP SMOKEYS MOONSHINER
 MTB BCC MISS BALANCE 46A

TMMW COLONEL 53C
 JEB BCC MS COLONEL 58G
 JEB BCC MS OVERTIME 50D

REG #:	1609759
BD:	3/3/2024
BW:	68
WW:	544

CE	BW	WW	YW	MK	TM	CEM	ST	DOC	CW	REA	MB	\$C	FPI	EPI
14	-0.4	79	126	23	63	6	13	14	42	.57	.32	97.27	85.40	156.21
BREED PERCENTILE RANKING PER EPD														
40	50	25	25	55	35	65	75	15	35	40	65	75	40	15
Breed %			37GV 63AN	OWNER:		Burbank Cattle / JGP Gelbvieh								

Balancer Homo Black Homo Polled **459**
JEB BCC Ms Probity 438M

JRI PROBITY 254D28
 MART JGPG PROBITY 0217H
 MART HALLE 620D

BNG OVERTIME 23Y
 JEB BCC MS OVERTIME 5G
 JEB BCC MS MATRIX 9X

REG #:	1609761
BD:	3/17/2024
BW:	60
WW:	563

CE	BW	WW	YW	MK	TM	CEM	ST	DOC	CW	REA	MB	\$C	FPI	EPI
14	-0.7	75	119	24	61	7	17	14	40	.28	.34	115.89	83.25	142.78
BREED PERCENTILE RANKING PER EPD														
40	45	40	40	45	45	45	20	15	45	90	60	35	50	25
Breed %			50GV 50AN	OWNER:		Burbank Cattle / JGP Gelbvieh								

PB Gelbvieh Homo Black Homo Polled **456**
JEB BCC Ms Stock Options M416 ET

CCRO CAROLINA LEVERAGE 3214A
 DCH HILLE STOCK OPTIONS D410
 DCH HILLE B189 ET

TMMW DESTINATION 82Y
 JEB BCC DR DESTINY 208F
 JEB BCC MISS BALANCE 38R

REG #:	1614489
BD:	3/6/2024
BW:	ET
WW:	ET

CE	BW	WW	YW	MK	TM	CEM	ST	DOC	CW	REA	MB	\$C	FPI	EPI
10	1.8	93	148	21	68	5	19	12	52	1.05	.21	139.08	87.82	180.01
BREED PERCENTILE RANKING PER EPD														
85	90	1	1	70	10	75	10	45	2	2	50	15	10	1
Breed %			94GV 6AN	OWNER:		Burbank Cattle Company								

81% Gelbvieh Homo Black Homo Polled **460**
DMP M302

DCH HILLE D453
 GLM HASHTAG# H11
 GLM W55

CCRO CAROLINA COMMOTION 6230D
 DMP K302
 DMP F302

REG #:	1606187
BD:	3/17/2024
BW:	79
WW:	724

CE	BW	WW	YW	MK	TM	CEM	ST	DOC	CW	REA	MB	\$C	FPI	EPI
14	0.6	87	135	30	73	8	18	17	55	1.09	.20	136.82	87.38	149.39
BREED PERCENTILE RANKING PER EPD														
35	70	10	10	4	2	25	15	1	10	1	75	10	25	15
Breed %			81GV 19AN	OWNER:		Pederson Gelbvieh								

GE-EPDs will be on supplement sheet sale day!

Balancer Homo Black Homo Polled **457**
MTB BCC Ms Probity M417 ET

BASIN PAYWEIGHT 1682
 JRI PROBITY 254D28
 JRI CLEMENTINE 254Z8

TMMW DESTINATION 82Y
 MTB BCC MS DESTINATION 508E ET
 JEB BCC MISS OBJECTIVE 41W

REG #:	1614492
BD:	3/7/2024
BW:	ET
WW:	ET

CE	BW	WW	YW	MK	TM	CEM	ST	DOC	CW	REA	MB	\$C	FPI	EPI
9	2.8	90	152	26	72	6	13	13	57	.50	.23	102.66	85.41	170.27
BREED PERCENTILE RANKING PER EPD														
95	>95	4	2	25	4	65	75	30	10	55	85	65	40	10
Breed %			56GV 44AN	OWNER:		Burbank Cattle Company								

PB Gelbvieh Homo Black Homo Polled **461**
DMP M195

CCRO CAROLINA LEVERAGE 3214A
 DCH HILLE STOCK OPTIONS D410
 DCH HILLE B189 ET

DCH HILLE X102
 DMP G195
 DMP E610

REG #:	1606188
BD:	3/21/2024
BW:	81
WW:	559

CE	BW	WW	YW	MK	TM	CEM	ST	DOC	CW	REA	MB	\$C	FPI	EPI
10	1.4	81	122	26	67	6	23	11	44	1.10	.08	157.78	77.95	105.95
BREED PERCENTILE RANKING PER EPD														
85	80	15	15	25	10	55	1	70	10	1	85	2	45	25
Breed %			88GV 12AN	OWNER:		Pederson Gelbvieh								

OPEN HEIFERS

PB Gelbvieh Homo Black Homo Polled **462**
DMP M241

DCH HILLE D453
 GLM HASHTAG# H11
 GLM W55

DCH HILLE A119
 DMP K402
 DMP F402

REG #:	1606189
BD:	3/21/2024
BW:	70
WW:	698

CE	BW	WW	YW	MK	TM	CEM	ST	DOC	CW	REA	MB	\$C	FPI	EPI
16	-0.6	80	122	28	69	9	19	17	46	.60	.16	125.44	83.29	140.18
BREED PERCENTILE RANKING PER EPD														
10	35	15	15	10	4	10	10	1	5	65	65	35	20	4
Breed %			84GV 16AN			OWNER:			Pederson Gelbvieh					

PB Gelbvieh Homo Black Homo Polled **466**
SKF Dunn's Marlie Hudson 4M83

CCRO CAROLINA LEVERAGE 3214A
 WAHL 004H ET
 FHG FLYING H MS LEGACY 48Y

SKF DUNNS DEPARTURE 052D
 SKF DUNN'S MISS HUDSON 077H
 SKF DUNN'S MISS BERTHA 4B28

REG #:	1603449
BD:	4/7/2024
BW:	88
WW:	760

CE	BW	WW	YW	MK	TM	CEM	ST	DOC	CW	REA	MB	\$C	FPI	EPI
10	1.9	91	143	29	75	5	20	11	42	.47	.57	151.27	95.45	145.89
BREED PERCENTILE RANKING PER EPD														
85	90	2	1	10	1	75	5	70	10	85	2	4	1	3
Breed %			94GV 6AN			OWNER:			Sandy Knoll Farm					

PB Gelbvieh Homo Black Homo Polled **463**
DMP M178

CCRO CAROLINA LEVERAGE 3214A
 DCH HILLE STOCK OPTIONS D410
 DCH HILLE B189 ET

VRT LAZY TV SAM U451
 DMP G178
 DMP E178

REG #:	1606190
BD:	3/23/2024
BW:	74
WW:	617

CE	BW	WW	YW	MK	TM	CEM	ST	DOC	CW	REA	MB	\$C	FPI	EPI
13	0.4	83	116	24	66	6	23	12	36	1.10	.48	166.03	90.81	92.42
BREED PERCENTILE RANKING PER EPD														
45	60	10	25	40	10	55	1	45	25	1	5	1	3	40
Breed %			86GV 14AN			OWNER:			Pederson Gelbvieh					

80% Gelbvieh Homo Black Homo Polled **467**
DMP M245

DCH HILLE A119
 DMP CAROLINA K47
 DMP G47

JKGF NEW HORIZON C51 ET
 DMP J302
 DMP F302

REG #:	1606196
BD:	4/10/2024
BW:	78
WW:	618

CE	BW	WW	YW	MK	TM	CEM	ST	DOC	CW	REA	MB	\$C	FPI	EPI
14	0.3	69	105	27	61	8	14	12	33	.59	.26	109.76	77.30	71.32
BREED PERCENTILE RANKING PER EPD														
35	65	65	65	15	40	25	60	50	55	45	65	55	70	80
Breed %			80GV 18AN 2AR			OWNER:			Pederson Gelbvieh					

GE-EPDs will be on supplement sheet sale day!

PB Gelbvieh Black Polled **464**
JEB BCC Ms Cactus 447M

BTBR SAGUARO 8111F ET
 TMGC SB CACTUS 27H
 TMGC SB DANIELLE 07C

JEMG J BAR M B858 ET BART
 DAMG FRANKIE BART 13F
 HRRF 52U

REG #:	1609766
BD:	3/25/2024
BW:	70
WW:	575

CE	BW	WW	YW	MK	TM	CEM	ST	DOC	CW	REA	MB	\$C	FPI	EPI
13	1.4	72	107	22	57	8	15	10	49	.71	.27	103.33	76.59	105.67
BREED PERCENTILE RANKING PER EPD														
40	85	45	45	60	60	20	60	85	3	40	35	80	55	25
Breed %			83GV 17AN			OWNER:			Burbank Cattle / JGP Gelbvieh					

Balancer Homo Black Homo Polled **468**
JEB BCC Ms Bodacious 2M

EWA ASCEND 7306
 MSHP SMOKEYS BODACIOUS
 BWF BRANDYWINE GEORGETTE 939G

ERTL BARGAINING CHIP D677
 JEB BCC MS CHIPPY K215 ET
 MTB BCC MS DESTINATION 501E ET

REG #:	1614481
BD:	4/12/2024
BW:	72
WW:	636

CE	BW	WW	YW	MK	TM	CEM	ST	DOC	CW	REA	MB	\$C	FPI	EPI
10	3.1	103	180	27	82	5	15	13	76	.64	.73	110.80	106.33	207.91
BREED PERCENTILE RANKING PER EPD														
90	>95	1	1	20	1	80	45	30	1	25	3	45	1	2
Breed %			52GV 48AN			OWNER:			Burbank Cattle Company					

Balancer Homo Black Homo Polled **465**
JEB BCC Ms Probity 454M

JRI PROBITY 254D28
 MART JGPG PROBITY 0217H
 MART HALLE 620D

BNG OVERTIME 23Y
 JEB BCC MS OVERTIME 907G ET
 JEB DR BCC MISS BALANCE 217Z

REG #:	1609763
BD:	4/1/2024
BW:	66
WW:	536

CE	BW	WW	YW	MK	TM	CEM	ST	DOC	CW	REA	MB	\$C	FPI	EPI
15	0.7	73	117	25	61	8	13	17	60	.55	.42	95.31	83.02	160.08
BREED PERCENTILE RANKING PER EPD														
25	75	50	45	35	45	30	75	1	4	45	40	80	50	15
Breed %			50GV 50AN			OWNER:			Burbank Cattle / JGP Gelbvieh					

81% Gelbvieh Homo Black Homo Polled **469**
DMP M198

DCH HILLE A119
 DMP CAROLINA K47
 DMP G47

DCH HILLE X102
 DMP G198
 DMP Z402

REG #:	1606197
BD:	4/16/2024
BW:	72
WW:	624

CE	BW	WW	YW	MK	TM	CEM	ST	DOC	CW	REA	MB	\$C	FPI	EPI
15	0.0	76	118	32	69	10	15	13	39	.67	.16	115.24	80.68	94.26
BREED PERCENTILE RANKING PER EPD														
25	55	35	35	1	10	10	50	25	35	30	85	45	50	60
Breed %			81GV 17AN 2HH			OWNER:			Pederson Gelbvieh					

GE-EPDs will be on supplement sheet sale day!

OPEN HEIFERS

80% Gelbvieh Black
DMP M152

DCH HILLE A119
 DMP CAROLINA K47
 DMP G47

BTBR BLACK CROSS HERO 4031
 DMP E152
 DMP C152

Homo Polled **470**

REG #:	1606199
BD:	4/20/2024
BW:	71
WW:	621

Balancer Homo Black Homo Polled
DMP M249

CCRO CAROLINA LEVERAGE 3214A
 DCH HILLE STOCK OPTIONS D410
 DCH HILLE B189 ET

MYTTY IN FOCUS
 DMP Z402
 DMP 402X

473

REG #:	1606193
BD:	5/30/2024
BW:	80
WW:	564

CE	BW	WW	YW	MK	TM	CEM	ST	DOC	CW	REA	MB	\$C	FPI	EPI
17	-1.9	66	95	27	61	9	13	12	18	.50	.30	96.15	79.95	35.88
BREED PERCENTILE RANKING PER EPD														
10	20	75	85	15	40	15	75	50	95	60	55	80	55	>95
Breed %		80GV 18AN 2AR			OWNER: Pederson Gelbvieh									

CE	BW	WW	YW	MK	TM	CEM	ST	DOC	CW	REA	MB	\$C	FPI	EPI
16	-2.8	74	109	29	67	10	21	14	31	.69	.30	146.30	86.01	131.54
BREED PERCENTILE RANKING PER EPD														
15	10	45	60	10	15	10	1	15	70	20	70	2	35	35
Breed %		72GV 25AN 3HH			OWNER: Pederson Gelbvieh									

Balancer Homo Black Homo Polled **471**
JEB BCC Ms Probity 469M

JRI PROBITY 254D28
 MART JGPG PROBITY 0217H
 MART HALLE 620D

SCHIEFELBEIN ALLIED 514
 JEB BCC MS ALLIED 913G ET
 JEB BCC MISS BALANCE 62A

REG #:	1609764
BD:	4/21/2024
BW:	66
WW:	544

PB Gelbvieh Homo Black Homo Polled **474**
DMP M215

DCH HILLE A119
 DMP CAROLINA K47
 DMP G47

JKGF NEW HORIZON C51 ET
 DMP J215
 DMP E610

REG #:	1606206
BD:	6/20/2024
BW:	81
WW:	690

CE	BW	WW	YW	MK	TM	CEM	ST	DOC	CW	REA	MB	\$C	FPI	EPI
16	0.6	78	130	26	66	9	10	13	50	.42	.47	81.51	88.21	168.71
BREED PERCENTILE RANKING PER EPD														
15	75	30	20	25	20	15	>95	30	15	70	30	95	25	10
Breed %		37GV 63AN			OWNER: Burbank Cattle / JGP Gelbvieh									

CE	BW	WW	YW	MK	TM	CEM	ST	DOC	CW	REA	MB	\$C	FPI	EPI
13	0.2	68	104	24	58	8	13	12	34	.75	.27	109.49	77.05	62.10
BREED PERCENTILE RANKING PER EPD														
45	55	60	55	40	55	20	85	45	30	30	35	70	50	80
Breed %		83GV 15AN 2AR			OWNER: Pederson Gelbvieh									

GE-EPDs will be on supplement sheet sale day!

Balancer Homo Black Homo Polled **472**
MTB BCC Ms Bodacious 7M

EWA ASCEND 7306
 MSHP SMOKEYS BODACIOUS
 BWF BRANDYWINE GEORGETTE 939G

TMMW DESTINATION 82Y
 MTB BCC MS DESTINATION 508E ET
 JEB BCC MISS OBJECTIVE 41W

REG #:	1597772
BD:	4/21/2024
BW:	78
WW:	561

PB Gelbvieh Homo Black Homo Polled **475**
DMP M212

DCH HILLE A119
 DMP CAROLINA K47
 DMP G47

JKGF NEW HORIZON C51 ET
 DMP J195
 DMP G195

REG #:	1606207
BD:	7/2/2024
BW:	79
WW:	831

CE	BW	WW	YW	MK	TM	CEM	ST	DOC	CW	REA	MB	\$C	FPI	EPI
10	2.7	91	151	26	75	6	14	13	56	.83	.52	106.19	94.32	174.25
BREED PERCENTILE RANKING PER EPD														
90	>95	3	3	25	2	65	60	30	10	5	20	55	10	10
Breed %		56GV 44AN			OWNER: Burbank Cattle/ Mulroy Farms									

CE	BW	WW	YW	MK	TM	CEM	ST	DOC	CW	REA	MB	\$C	FPI	EPI
12	0.3	77	117	26	65	7	12	13	41	.90	.14	93.25	79.34	82.37
BREED PERCENTILE RANKING PER EPD														
60	55	25	25	25	15	35	90	25	10	10	70	90	40	55
Breed %		89GV 9AN 2AR			OWNER: Pederson Gelbvieh									

COMMERCIAL FEMALES

The following LOTS are un-registered, commercial, Replacement Quality females from some of our Seedstock Plus breeders and long-term customers. All the work is done! These are tremendous groups of Black Gelbvieh, Angus and Balancer Influence females.

Sandy Knoll Farms, Brian Dunn
 St. John, KS * 620-786-4039

15 breds/ pairs

Balancer & Gelbvieh type, home-raised
 spring breds or pairs

30 head

Balancer & Gelbvieh type open heifers

Terms & Conditions

Terms: Terms of the sale are cash or personal check unless satisfactory credit arrangements have been made with the seller previous to the sale.

Bidding: All animals sell to the highest bidder. Any disputes or challenges regarding bids shall be settled by the auctioneer and his decision shall be final. Mailed or telephoned bids will be handled with the strictest confidence.

Registrations & Transfers: Each animal which is offered and sold has a certificate of registry available at the time of sale. The seller is responsible for the proper transfer of the certificate to the purchaser including full payment of transfer fees.

Purchaser's Risk: Each animal becomes the property of and therefore is also the risk of the purchaser as soon as it is sold.

Announcements: Any errors or changes in information contained in the catalog will be announced from the auction block. Such announcements shall take precedence over information contained herein.

Rights and Obligations: The above terms and conditions of sale constitute a contract between the buyer and seller of each animal and shall be equally binding to both. Animals resold following purchase in this sale shall constitute a separate transaction and the rights and obligations of the parties connected thereto are not covered by the above terms and conditions of this sale. Neither the host farm, auctioneers, nor any other person connected with the management or conduct of this sale assumes any liability, legal or otherwise, except as set forth above.

DEFINITIONS AND GUARANTEES

HORNED: An animal with a horn growth affixed to the skull that has or has not been removed.

POLLED/SCURRED: An animal with rudimentary horn growth that will not develop into a horn. The rudimentary horn growth may or may not become affixed to the skull at an older age.

POLLED: An animal with absence of horn growth (An animal can have scurs and still be genetically polled)

DOUBLE POLLED: An animal whose sire and dam are both polled or scurred, this gives this animal the possibility of being homozygous polled for the polled trait but it is not yet proven so.

HOMOZYGOUS POLLED: An animal who carries two polled genes, and will produce polled or polled/scurred offspring with every mating.

DILUTER GENE: A gene carried by some Gelbvieh cattle that affects the degree of red color in the hair coat. Bulls carrying this gene can produce gray calves when mated to black cows or cream colored calves when mated to each other.

DILUTER FREE: All Red Angus are free of the diluter gene as are all red Gelbvieh cattle resulting from a double black mating. Red Gelbviehs can also be proven diluter-free by mating to black cows and producing all red or black offspring

DOUBLE BLACK: An animal whose sire and dam are both black, which give the animal the possibility of being homozygous for the black trait but its not yet proven so.

HOMOZYGOUS BLACK: An animal who carries two black genes and has been proven by mating or genetically tested to produce black or black factor (gray when mated with diluter-based genetics) calves with every mating.

For more information contact: Seedstock Plus Toll Free at: 877-486-1160 or John on his cell: 660-734-1165 or visit the website: www.seedstockplus.com

Seedstock Plus Sale Calendar

North Missouri Bull Sale

February 22, 2025

125 Balancer & Gelbvieh Bulls - all Black!
Kingsville Livestock, Kingsville, MO

Arkansas Bull Sale

March 1, 2025

75 Angus, Brangus, Gelbvieh
& Balancer Bulls - Red & Black!
Hope Livestock Auction, Hope, AR

Red Reward Bull & Heifer Sale

March 8, 2025

50 Red Gelbvieh & Balancer Bulls
Plus! Red Comm & Registered Females
Wheeler Livestock, Osceola, MO

South Missouri Bull & Female Sale

March 22, 2025

125 Balancer & Gelbvieh Bulls - all Black!
Plus! Black Comm & Registered Open Heifers
Joplin Regional Stockyards, Carthage, MO

Keep Your Mind in the Market

Volatile commodity markets and the speed at which narrow windows of opportunity to manage risk open and close underscore the value of keeping your mind engaged in the market, no matter how frequently you trade cattle.

That's why Seedstock Plus continues to offer as a free service to its customers and members a complimentary subscription to the daily Cattle Current electronic newsletter. It offers a convenient snapshot of the previous day's cash and futures markets for calves, feeders, fed cattle and related commodities. You'll also find pertinent market-related news.

If you're not receiving Cattle Current, or if you'd like to receive it at more than one e-mail address, please let us know and we'll add you to the list. You can send your request to wes@cattlecurrent.com.

Working Together for Industry Excellence



Seedstock Plus

18864 Kepler Dr.

St. Catharine, MO 64628

RETURN SERVICE REQUESTED

FIRST CLASS MAIL

