

*Seedstock Plus Arkansas
Bull Sale*

*March 1, 2025 *1 p.m.*

*Hope Livestock Market
Hope, Arkansas*

*ALL GELBVIEH & BALANCER BULLS SELL WITH
GENOMIC-ENHANCED EPDS AND ARE SIRE VERIFIED,
COAT COLOR & POLLED TESTED!*



Bid & Buy at:
DVAuction

Working Together for Industry Excellence



Seedstock Plus

Seedstock Plus Arkansas Bull Sale
Saturday March 1, 2025 * 1 p.m *
Hope Livestock Auction, Hope, AR

Marketing Partnership

LBJ Cattle Marketing Inc.

353 Hempstead 4
Hope, AR 71801

Lanny Ford: 870-703-4345
Bart Emerson: 870-904-6671
Jeff Milan: 870-703-0716

Driving Directions: For those of you with a GPS - the street address is 2105 West 3rd St, Hope, AR 71801.
Exit 30 off of I-30 (US 278/Hervey St) go south on Hervey St. Turn right on 3rd St. Sale barn is on the left.

Accommodations:

All 3 hotels are at Exit 30 off I-30 in Hope.
In front of Walmart

Holiday Inn Express
870-722-6262

Hampton Inn
870-777-4567

Best Western
870-777-9222

**Seedstock Plus
Customer Service Programs**

Guaranteed Sight-Unseen Purchases

Free Delivery on bulls
or \$100 Discount if picked up sale day

Bull Warranty Program

Bulls are guaranteed for Fertility, Structure and Disposition. For an additional 5% of purchase price, bull can be warrantied for injury and death for 6 months.

Marketing Assistance Program

- Feeder Calves
- Replacement Females
- Bred Heifers, Cows and Pairs

If you need additional information on a particular program, call us at the Seedstock Plus office.

Health

Seedstock Plus Bulls have been tested and found negative for PI BVD. We recommend producers purchase only bulls that are negative for Persistent Infected BVD Virus. **Bulls are also tested NEGATIVE for Trichomoniasis.** This is not mandated by every state yet but some states are requiring it and we felt it best to be on top of that. The bulls have been vaccinated and boosted with IBR, BVD, PI-3, BRSV-4, Black-leg & Vibrio Lepto. They have been on a regular de-worming schedule since weaning. All the bulls have passed a breeding soundness exam that includes live semen evaluation, palpation, extension and scrotal measurement. All the necessary health tests have been performed and interstate health papers will be available sale day.

Seedstock Plus Arkansas Bull Sale

March 1, 2025 * 1 p.m.

Hope Livestock Auction, Hope AR

Sale Day phone: 870-777-4451

John Burbank cell: 660-734-1165

Matt Burbank cell: 660-734-2739

LBJ Cattle Marketing: Lanny Ford: 870-703-4345

Bart Emerson: 870-904-6671

Jeff Milam: 870-703-0716

Lakin Oakley, Auctioneer..... 903-277-9610

Selling: 90 - Angus, Balancer, Gelbvieh & Brangus Bulls

About the Bulls:

- Prior to delivery to the test, bulls are sorted and culled at home
- Bulls are culled again prior to catalog for poor gain, conformation, disposition, etc.
- All bulls have passed a thorough breeding soundness exam prior to the sale
- All bulls are tested Negative for BVD -PI3 & Trichomoniasis
- All Gelbvieh & Balancer bulls have genomically enhanced EPDs and are Sire Verified.
- All Gelbvieh & Balancer bulls are Polled and Coat Color tested.
- Frame scores & scrotal measurements will be available on a supplement sheet on sale day.
- EPDs update weekly so there will be updated EPDs, Tenderness scores, frame scores & scrotal measurements available on a supplement sheet early the week of the sale.
- **EPDs ARE CURRENT AS OF 1/14/2025**

We are planning to video each of the bulls on February 13th - after they have been semen checked and clipped. The videos will be posted during the following week and will be available to view by February 20th. If you would like to see a video of a specific bull and have access to high speed internet - you can go to our website or www.dvauction.com and download the videos by the bull's LOT #.

Internet Bidding:

The sale will be available to watch and bid real time at www.dvauction.com

1. Create an account under the 'create new account' tab.

2. Apply for bidding by clicking 'apply for bidding' in the upper left corner of the screen. **AT LEAST 24 HOURS PRIOR TO THE SALE!**

3. Tune in to the sale to make your purchases!

Working Together for Industry Excellence



Seedstock Plus

John E. Burbank, CEO
18864 Kepler Dr.

St. Catharine, MO 64628

Toll Free: 877-486-1160 or

cell: 660-734-1165

email: john@seedstockplus.com

www.seedstockplus.com

DVAuction Broadcasting
Real-time Auctions

Industry Commitment

The bulls included in this offering come from producers who are in the Seedstock business for the long haul. They raise the kind of bulls that produce the type of feeder calves that feed well and grade and yield on the rail. These are the kind of bulls that produce the replacement heifers that make our commercial customers so successful. Feel free to contact any of the members listed below if you have questions.

4 W Farms

Contact: Brycen Wiedmer
Troy, KS
816-262-4172

Hebron Ranch

Contact: Daniel Bell
Olaton, KY
270-274-1749

Narrow Gate Cattle

Contact: Larry Kendall
Osage Beach, MO
573-216-9719

Springhaven Farm LLC

Contact: Ken Anderson
Belton, MO
816-506-7947

Bryce Family Farms LLC

Contact: Bryce Cripps
Columbia, MO
573-808-4742

Horizon Farms

Contact: Ed Laverentz
Cheney, KS
316-990-5088

Norwood Gelbvieh

Contact: Jerry Norwood
Carthage, MO
417-850-1023

Stuecken Brothers

Contact: Derek Stuecken
Freeburg, MO
573-690-8543

Burbank Cattle Company

Contact: Matt Burbank
St. Catharine, MO
660-734-2739

JGP Gelbvieh

Contact: Josh Phillips
Lathrop, MO
816-914-6053

Pecan Ridge Gelbvieh

Contact: Jaron Franks
Albertville, AL
256-426-3782

Wannabe Stock Farm

Contact: Gregory Summers
Smithville, MO
816-392-5242

Burns Gelbvieh

Contact: Jesse Burns
Covington, OH
937-606-4861

KZ Cattle Company

Contact: Kerry Zillinger
Columbus, KS
785-543-7614

Pederson Gelbvieh

Contact: David Pederson
Buffalo, MN
320-333-2014

Wolf Gelbvieh

Contact: Travis Wolf
Gothenburg, NE
308-529-3733

Chapuis Cattle Company

Contact: Charlie Chapuis
Louisiana, MO
573-754-0079

L & L Gelbvieh

Contact: Wes Lasher
Smithland, KY
270-564-2315

Reinert Family Farm

Contact: John Reinert
Billings, MO
417-224-7204

Zimmerman Gelbvieh

Contact: Tyler Zimmerman
Harper, KS
620-243-2876

Darnell Farms

Contact: Bobby Darnell
Indian Mound, TN
931-624-5174

Lawman Farms

Contact: Kathleen Merritt
Columbia, MO
419-439-3730

Rex Wood Farms

Contact: Rex Wood
Meadville, MO
660-247-2577

Duck River Gelbvieh

Contact: David Bates
Duck River, TN
931-209-5053

Little Sioux Gelbvieh

Contact: Jack Welle
Milford, IA
712-251-4641

RM Cattle

Contact: Ryan Grable
Troy, KS
785-850-0686

Flint Hills Gelbvieh

Contact: Ronald Schultz
Alma, KS
785-617-0033

Meng Farms Cattle Co.

Contact: Doug Meng
Troy, KS
913-370-0334

Rockin' U Ranch

Contact: Stan Utley
Richmond, MO
816-719-3793

Gatson Gelbvieh

Contact: Adam Gatson
Vandalia, MO
573-721-6482

Mulroy Farms LLC

Contact: Tim Mulroy
Mayetta, KS
785-640-6401

Sandy Knoll Farm Gelbvieh

Contact: Brian L Dunn
St. John, KS
620-786-4039

About The Catalog:

Color possibilities:
 Black - known red carrier
 Homo Black - known homozygous black
 ND Red - non-diluter red
 Red (DC) - red - diluter carrier

Polled Status:
 Polled: Single Polled
 Scurred
 Homo Polled

Balancer

COLOR

POLLED

540

EPD'S: All Bulls have an LD Profile and 'Genomic Enhanced EPDs'.

Breed Percentile Ranking: This number corresponds to the EPD directly above it to compare EPDs within breed.

PFX NAME

GRAND SIRE
 SIRE
 GRAND DAM
 MAT GRAND SIRE
 DAM
 MAT GRAND DAM

| | |
|--------|--------|
| REG #: | REG #: |
| BD: | B DATE |
| BW: | BW |
| WW: | Adj WW |

Actual Data:
 Registration #
 Birthdate
 Actual BW
 Adjusted WW

| CE | BW | WW | YW | MK | TM | CEM | ST | DOC | CW | REA | MB | \$C | FPI | EPI |
|---|----|----|----|----|----|-----|----|-----|----|-----|----|-----|-----|-----|
| BREED PERCENTILE RANKING PER EPD | | | | | | | | | | | | | | |
| Breed % | | | | | | | | | | | | | | |
| OWNER: | | | | | | | | | | | | | | |

Breed Make-up on Balancer bulls. Abbreviations include: AN = Black Angus AR = Red Angus GV = Gelbvieh XX = unknown

Expected Progeny Differences 'EPD' Definitions

The American Gelbvieh Association transitioned to the BOLT system for EPD calculations in the fall of 2018. The American Angus Association had already been using this system for the previous year. There are 12 beef breed Associations in collaboration to form IGS (International Genetic Solutions) which brings a new, streamlined method for incorporating genomic results into the EPDs. This incorporates data and updates EPDs on a weekly basis.

EPD Definitions:

CE: Calving Ease – A number that predicts the average difference in ease with which a sire's calves will be born when he is bred to first calf heifers – **higher numbers indicate greater calving-ease.**

BW: Birth Weight, **WW:** Weaning Weight & **YW:** Yearling Weight – All are expressed in pounds, this shows the expected number of pounds a bull or female will add or subtract from their progeny's birthweight, weaning weight and yearling weight respectively.

MK: Milk: expressed in pounds of weaning weight that a female will add/subtract or that a bull's daughters will have.

TM: Total Maternal - expresses the combination of what a sire transmits to his daughters in the form of genetics for growth and genetics for milking ability. Or that same trait directly applied to a female and expressed in pounds.

CEM: Calving Ease Maternal: this EPD predicts how well an animal's daughters will calve with a higher number being easier calving.

ST: Stayability: Predicts the genetic difference, in terms of percent probability, that a bull's daughters will stay productive within a herd to at least six year of age.

DOC: is expressed as a difference in yearling cattle temperament, with a higher value indicating more favorable docility. It predicts the average difference of progeny from a sire in comparison with another sire's calves. In herds where temperament problems are not an issue, this expected difference would not be realized.

CW: Carcass Weight: expressed in pounds of carcass weight adjusted to a constant fat endpoint.

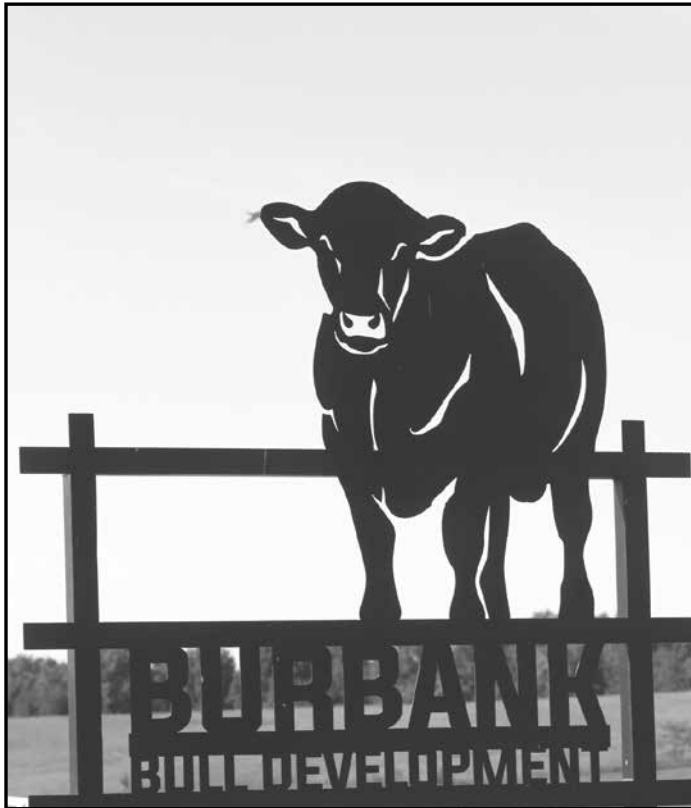
REA: Rib Eye Area: expressed in square inches of rib eye muscle area adjusted to a constant fat endpoint.

MB: Marbling: expressed in degrees of marbling score, a determinant of USDA Quality Grade. Value is adjusted to a constant fat endpoint.

\$Cow: Represents the genetic value in dollars of profit of an animal when retained as a replacement female relative to other animals in the herd. A higher number represents more profitable genetics for maternal productivity.

FPI: An economic selection index designed to aid producers in selecting sires whose progeny will perform in the feedlot and are sold on grade and yield.

EPI: An economic selection index developed to aid producers in selecting for more feed efficient cattle that still have acceptable amounts of gain.



We are proud to announce that moving forward, all Seedstock Plus bulls will be developed by Burbank Bull Development LLC in St. Catharine, MO. Matt & Cammie Burbank, with the help of their kids, will handle the daily feed & care of all Seedstock Plus bulls, on-line females and growing bulls from weaning until graduating into the Seedstock Plus development test.

We would like to thank the crew at RJM Farms in Holden, MO for many years of excellent work on behalf of the Seedstock Plus group developing the bulls for our program. The entire Anstine family, Tim & Janet Evert and others in the Holden area are friends, customers and have contributed to the past success of Seedstock Plus. We will continue to support those relationships in the Warrensburg, Holden and Kingsville area but admit that we are excited to bring the development of the Seedstock Plus bulls home.

We would encourage anyone to come visit the new and improved facility that will accommodate all we do here at home and all the needs of the Seedstock Plus program. Although we did not install the GrowSafe system (due to cost & labor issues), we have made some significant improvements to the bull development process such as large pasture turn-out paddocks for the bulls. Our family is committed to the future success of the Seedstock Plus program.

Bull Warranty Program Insurance for your bull!

Several years ago, Seedstock Plus instituted an insurance program for new bull purchases in an effort to protect our customers from a catastrophic loss if something should happen to a bull within the first breeding season. This program covers any and all possible things that a bull can do to himself in the first six months of ownership. The warranty costs **5%** of the purchase price and should you have to use it, we try to either bring you a comparable replacement or find a suitable loaner bull to get the cows bred if you are still in the midst of breeding season. If something happens to him towards the end of the season, we still cover that but often will either take the bull back and issue a credit towards your next purchase or have you ship the bull, keep the salvage funds and issue a credit for the balance. Any way you look at it - we get you back even! We've warrantied bulls that have been hit by lightning, hit by trains, drowned, broken various body parts or been injured in such a way that he won't ever be sound to breed cows again.

There are very few affordable commercial insurance policies that will cover a bull for loss of use. Farm policies will cover 'acts of God' (so do we!) but again, an injury is just your tough luck. The **5%** of purchase price cost is a small price if something happens to your bull within that first 6 months!

We appreciate the fact that you've put your trust in us to present you with a bull that has a good disposition, good feet and legs and will breed cows - we feel those things should be 'on us' and you don't need insurance if you have a problem in one of these areas - you just need to let us know and we'll take care of it. We try to catch every possible problem prior to the sale but things happen and bulls are bulls.... But if your bull gets injured or dies, he needs to be insured! Take a good look at what the warranty can offer you and be sure to tell us at the settlement table that you want to insure your bull!

About Angus Bulls

All of the Angus bulls in this category are registered with the American Angus Association and their EPD's are the most current provided by their Association. Remember that the Angus EPD's can only be compared within breed and to the breed average. The average EPD's for Angus bulls as of 1/19/2025:

CE: 6 BW: 1.3 WW: 67 YW: 117 MK: 26 CEM: 8 DOC: 19 CW: 54
 REA: .69 MB: .75 \$W:61 \$F: 93 \$G: 55 \$B: 152 \$C: 260

Angus Index EPD Definitions:

\$W: (Weaned Calf Value) is an index value expressed in dollars per head and is the expected average difference in future progeny performance for preweaning merit. \$W includes both revenue and cost adjustments associated with differences in birth weight, weaning direct growth, maternal milk and mature cow size

\$F: (Feedlot Value) & **\$G** (Grid Value) (are both an index value expressed in dollars per head, and are the expected average difference in future progeny performance for postweaning merit (\$F) and progeny performance for carcass grid (\$G) compared to progeny of other sires

\$B: (Beef Value) is an index value expressed in dollars per head and is the expected average difference in future progeny performance for postweaning and carcass value compared to progeny of other sires

\$C: (Combined Value) is an index expressed in dollars per head. The EPDs directly influencing this combined index: calving ease direct (CE) and maternal (CEM), weaning weight (WW), yearling weight (YW), maternal milk (MK), heifer pregnancy (HP), docility (DOC), mature cow weight (MW), foot angle (Angle), claw set (Claw), dry matter intake (DMI), marbling (MB), carcass weight (CW), ribeye area (RE) and fat thickness (Fat) Utilize this index with the objective that producers will replace 20% of their breeding females per year with replacement heifers retained within their own herd. The remaining cull heifer and steer progeny are then assumed to be sent to the feedlot where the producers retain ownership of those cattle and sell them on a quality-based carcass merit grid.

Angus

Ward Duke 308

B BAR WINDY 7 3575
 MILLARS DUKE 816
 MILLARS QUEEN LASS 5273
 KLR BISMARCK 0042
 JM ESBON J009-J222
 JM ESBON 824-J009

| | |
|--------|-----------|
| REG #: | 20883899 |
| BD: | 2/14/2023 |
| BW: | 74 |
| WW: | 651 |

| CE | BW | WW | YW | MK | CEM | DOC | CW | REA | MB | \$W | \$F | \$G | \$B | \$C |
|----------------------------------|-------|----|-----|----|--------|-----|----|-----|----|------------|-----|-----|-----|-----|
| 6 | 0.6 | 64 | 110 | 24 | 5 | 20 | 34 | .29 | 22 | 60 | 94 | 25 | 119 | 225 |
| BREED PERCENTILE RANKING PER EPD | | | | | | | | | | | | | | |
| 55 | 35 | 60 | 65 | 65 | 80 | 50 | 90 | 95 | 95 | 55 | 50 | 95 | 90 | 80 |
| Breed % | 100AN | | | | OWNER: | | | | | Ward Farms | | | | |

132

Angus

Ward Duke 313

B BAR WINDY 7 3575
 MILLARS DUKE 816
 MILLARS QUEEN LASS 5273
 WF GRAN TORINO 95
 WARD ERICA 367
 J C ERICA 16

| | |
|--------|-----------|
| REG #: | 20883900 |
| BD: | 2/14/2023 |
| BW: | 77 |
| WW: | 626 |

| CE | BW | WW | YW | MK | CEM | DOC | CW | REA | MB | \$W | \$F | \$G | \$B | \$C |
|----------------------------------|-------|----|-----|----|--------|-----|----|-----|----|------------|-----|-----|-----|-----|
| 6 | 0.3 | 59 | 100 | 25 | 6 | 18 | 42 | .41 | 28 | 57 | 87 | 30 | 117 | 224 |
| BREED PERCENTILE RANKING PER EPD | | | | | | | | | | | | | | |
| 55 | 30 | 75 | 80 | 55 | 70 | 60 | 80 | 85 | 90 | 65 | 60 | 95 | 90 | 80 |
| Breed % | 100AN | | | | OWNER: | | | | | Ward Farms | | | | |

133

Angus

Ward Duke 315

B BAR WINDY 7 3575
 MILLARS DUKE 816
 MILLARS QUEEN LASS 5273
 WB PENDLETON 708 PVF SWSN
 WARD LASS 016
 WARD LASS 660

| | |
|--------|-----------|
| REG #: | 20883894 |
| BD: | 2/20/2023 |
| BW: | 70 |
| WW: | 576 |

| CE | BW | WW | YW | MK | CEM | DOC | CW | REA | MB | \$W | \$F | \$G | \$B | \$C |
|----------------------------------|-------|----|-----|----|--------|-----|----|-----|-----|------------|-----|-----|-----|-----|
| 7 | 0.3 | 60 | 101 | 23 | 5 | 17 | 53 | .69 | .06 | 55 | 101 | 25 | 125 | 223 |
| BREED PERCENTILE RANKING PER EPD | | | | | | | | | | | | | | |
| 45 | 30 | 70 | 80 | 70 | 80 | 65 | 55 | 50 | 95 | 70 | 35 | 95 | 80 | 85 |
| Breed % | 100AN | | | | OWNER: | | | | | Ward Farms | | | | |

134

Angus

Ward Duke 303

B BAR WINDY 7 3575
 MILLARS DUKE 816
 MILLARS QUEEN LASS 5273
 WARD INSIGHT 510
 WARD ERICA 148
 J C ERICA 16

| | |
|--------|----------|
| REG #: | 20883895 |
| BD: | 2/9/2023 |
| BW: | 75 |
| WW: | 623 |

| CE | BW | WW | YW | MK | CEM | DOC | CW | REA | MB | \$W | \$F | \$G | \$B | \$C |
|----------------------------------|-------|----|-----|----|--------|-----|----|-----|-----|------------|-----|-----|-----|-----|
| 6 | 0.1 | 62 | 105 | 24 | 7 | 15 | 51 | .61 | .24 | 59 | 100 | 31 | 132 | 240 |
| BREED PERCENTILE RANKING PER EPD | | | | | | | | | | | | | | |
| 55 | 25 | 65 | 75 | 65 | 65 | 70 | 60 | 95 | 60 | 35 | 95 | 75 | 75 | 70 |
| Breed % | 100AN | | | | OWNER: | | | | | Ward Farms | | | | |

131

Angus

Ward Playbook 330

TEX PLAYBOOK 5437
 SAMPSON CD PLAYBOOK 1946
 CONLEY EISA ERICA 4460
 MEAD WEIGH UP N167
 WARD LADY 457
 JM LADY FRANKLIN J035-J349

| | |
|--------|-----------|
| REG #: | 20883603 |
| BD: | 4/16/2023 |
| BW: | 68 |
| WW: | 632 |

| CE | BW | WW | YW | MK | CEM | DOC | CW | REA | MB | \$W | \$F | \$G | \$B | \$C |
|----------------------------------|-------|----|----|----|--------|-----|----|-----|-----|------------|-----|-----|-----|-----|
| 10 | 0.1 | 53 | 96 | 27 | 13 | 24 | 35 | .23 | .44 | 52 | 81 | 37 | 117 | 226 |
| BREED PERCENTILE RANKING PER EPD | | | | | | | | | | | | | | |
| 25 | 25 | 85 | 85 | 40 | 10 | 30 | 90 | 95 | 80 | 75 | 75 | 85 | 90 | 80 |
| Breed % | 100AN | | | | OWNER: | | | | | Ward Farms | | | | |

135

ANGUS BULLS

Angus

Ward Thrive 390

TEHAMA REVERE
S THRIVE JAS 5515
S SELENA 201

LIMESTONE MARATHON U250
BUFORD EMMA 707Y
SITZ EMMA E 120P

| | |
|--------|-----------|
| REG #: | 21141269 |
| BD: | 9/15/2023 |
| BW: | 71 |
| WW: | 568 |

| CE | BW | WW | YW | MK | CEM | DOC | CW | REA | MB | \$W | \$F | \$G | \$B | \$C |
|----------------------------------|-------|----|----|----|--------|------------|----|-----|-----|-----|-----|-----|-----|-----|
| 8 | 0.8 | 49 | 89 | 25 | 9 | 27 | 30 | .37 | .44 | 45 | 71 | 36 | 108 | 220 |
| BREED PERCENTILE RANKING PER EPD | | | | | | | | | | | | | | |
| 35 | 40 | 90 | 90 | 55 | 40 | 15 | 95 | 85 | 80 | 90 | 90 | 36 | 95 | 85 |
| Breed % | 100AN | | | | OWNER: | Ward Farms | | | | | | | | |

136

Angus

Ward Thrive 352

TEHAMA REVERE
S THRIVE JAS 5515
S SELENA 201

SEDGWICKS OUTLAW 538W
W F ARKDALE PRIDE 403B
WALLACE ARKDALE PRIDE 186

| | |
|--------|-----------|
| REG #: | 21141219 |
| BD: | 9/18/2023 |
| BW: | 68 |
| WW: | 575 |

| CE | BW | WW | YW | MK | CEM | DOC | CW | REA | MB | \$W | \$F | \$G | \$B | \$C |
|----------------------------------|-------|----|----|----|--------|------------|----|-----|-----|-----|-----|-----|-----|-----|
| 7 | 1.0 | 50 | 95 | 26 | 8 | 27 | 33 | .53 | .50 | 44 | 78 | 45 | 122 | 219 |
| BREED PERCENTILE RANKING PER EPD | | | | | | | | | | | | | | |
| 45 | 45 | 90 | 85 | 50 | 55 | 15 | 95 | 70 | 75 | 90 | 80 | 70 | 85 | 85 |
| Breed % | 100AN | | | | OWNER: | Ward Farms | | | | | | | | |

140

Angus

Ward Thrive 348

TEHAMA REVERE
S THRIVE JAS 5515
S SELENA 201

LD CAPITALIST 316
WARD ARKDALE PRIDE 508
WARD ARKDALE PRIDE 640

| | |
|--------|-----------|
| REG #: | 21141218 |
| BD: | 9/16/2023 |
| BW: | 72 |
| WW: | 791 |

| CE | BW | WW | YW | MK | CEM | DOC | CW | REA | MB | \$W | \$F | \$G | \$B | \$C |
|----------------------------------|-------|----|-----|----|--------|------------|----|-----|----|-----|-----|-----|-----|-----|
| 6 | 1.5 | 75 | 131 | 27 | 9 | | | | | 65 | 86 | | | |
| BREED PERCENTILE RANKING PER EPD | | | | | | | | | | | | | | |
| 55 | 55 | 30 | 30 | 40 | 40 | | | | | 45 | 65 | | | |
| Breed % | 100AN | | | | OWNER: | Ward Farms | | | | | | | | |

137

Angus

Ward Thrive 368

TEHAMA REVERE
S THRIVE JAS 5515
S SELENA 201

CONNELLY ARMORY
WARD EILEENMERE 021
JM LADY 1014 TOTAL M836-J353

| | |
|--------|-----------|
| REG #: | 21141217 |
| BD: | 9/18/2023 |
| BW: | 70 |
| WW: | 583 |

| CE | BW | WW | YW | MK | CEM | DOC | CW | REA | MB | \$W | \$F | \$G | \$B | \$C |
|----------------------------------|-------|----|-----|----|--------|------------|----|-----|----|-----|-----|-----|-----|-----|
| 7 | 0.8 | 56 | 106 | 29 | 9 | | | | | 51 | 79 | | | |
| BREED PERCENTILE RANKING PER EPD | | | | | | | | | | | | | | |
| 45 | 40 | 80 | 70 | 30 | 40 | | | | | 80 | 75 | | | |
| Breed % | 100AN | | | | OWNER: | Ward Farms | | | | | | | | |

141

Angus

Ward Moxley 349

MUSGRAVE CRACKERJACK
MUSGRAVE MOXLEY
MUSGRAVE JUANA ERICA 888-454

CONNELLY ARMORY
WARD TROWBRIDGE PRIDE 020
WARD TROWBRIDGE PRIDE 267

| | |
|--------|-----------|
| REG #: | 21141165 |
| BD: | 9/17/2023 |
| BW: | 73 |
| WW: | 702 |

| CE | BW | WW | YW | MK | CEM | DOC | CW | REA | MB | \$W | \$F | \$G | \$B | \$C |
|----------------------------------|-------|----|-----|----|--------|------------|----|-----|-----|-----|-----|-----|-----|-----|
| 7 | 0.5 | 68 | 121 | 35 | 9 | 15 | 50 | .65 | .61 | 71 | 98 | 49 | 148 | 258 |
| BREED PERCENTILE RANKING PER EPD | | | | | | | | | | | | | | |
| 45 | 35 | 50 | 45 | 10 | 40 | 70 | 60 | 55 | 65 | 30 | 40 | 60 | 55 | 55 |
| Breed % | 100AN | | | | OWNER: | Ward Farms | | | | | | | | |

138

Angus

Ward Down Spout 372

S A V RAINFALL 6846
S A V DOWNSPOUT 1878
S A V MADAME PRIDE 4407

BC LOYAL C1951
WARD LADY TOTAL 043
JM LADY TOTAL M958-J441

| | |
|--------|-----------|
| REG #: | 21141066 |
| BD: | 9/30/2023 |
| BW: | 70 |
| WW: | 681 |

| CE | BW | WW | YW | MK | CEM | DOC | CW | REA | MB | \$W | \$F | \$G | \$B | \$C |
|----------------------------------|-------|----|-----|----|--------|------------|----|-----|----|-----|-----|-----|-----|-----|
| 6 | 0.8 | 56 | 101 | 22 | 5 | | | | | 46 | 75 | | | |
| BREED PERCENTILE RANKING PER EPD | | | | | | | | | | | | | | |
| 55 | 40 | 80 | 80 | 80 | 80 | | | | | 90 | 85 | | | |
| Breed % | 100AN | | | | OWNER: | Ward Farms | | | | | | | | |

142

Angus

Ward Moxley 351

MUSGRAVE CRACKERJACK
MUSGRAVE MOXLEY
MUSGRAVE JUANA ERICA 888-454

BC LOYAL C1951
WARD ARKDALE PRIDE 9055
WALLACE ARKDALE PRIDE 186

| | |
|--------|-----------|
| REG #: | 21141166 |
| BD: | 9/17/2023 |
| BW: | 70 |
| WW: | 582 |

| CE | BW | WW | YW | MK | CEM | DOC | CW | REA | MB | \$W | \$F | \$G | \$B | \$C |
|----------------------------------|-------|----|----|----|--------|------------|----|-----|----|-----|-----|-----|-----|-----|
| 9 | -0.1 | 52 | 95 | 26 | 8 | | | | | 48 | 71 | | | |
| BREED PERCENTILE RANKING PER EPD | | | | | | | | | | | | | | |
| 30 | 25 | 90 | 85 | 50 | 55 | | | | | 85 | 90 | | | |
| Breed % | 100AN | | | | OWNER: | Ward Farms | | | | | | | | |

139

Angus

Ward Growth Fund 385

DEER VALLEY GROWTH FUND
SAMPSON GROWTH FUND 115
SAMPSON BLACKBIRD 1709

BOYD CARTWRIGHT 3303
WARD NEW DESIGN 347
JM NEW DESIGN 564-M958

| | |
|--------|-----------|
| REG #: | 21140788 |
| BD: | 10/1/2023 |
| BW: | 69 |
| WW: | 696 |

| CE | BW | WW | YW | MK | CEM | DOC | CW | REA | MB | \$W | \$F | \$G | \$B | \$C |
|----------------------------------|-------|----|-----|----|--------|------------|----|-----|-----|-----|-----|-----|-----|-----|
| 11 | -0.1 | 67 | 120 | 24 | 11 | 15 | 46 | .44 | .36 | 61 | 100 | 34 | 134 | 237 |
| BREED PERCENTILE RANKING PER EPD | | | | | | | | | | | | | | |
| 15 | 25 | 50 | 65 | 25 | 70 | 70 | 80 | 85 | 55 | 35 | 90 | 70 | 75 | |
| Breed % | 100AN | | | | OWNER: | Ward Farms | | | | | | | | |

143

ANGUS BULLS

Angus

144

Ward Growth Fund 354

DEER VALLEY GROWTH FUND
SAMPSON GROWTH FUND 115
SAMPSON BLACKBIRD 1709

LD CAPITALIST 316
WARD LADY 9006
WARD LADY 457

| | |
|--------|-----------|
| REG #: | 21141108 |
| BD: | 10/3/2023 |
| BW: | 75 |
| WW: | 668 |

| CE | BW | WW | YW | MK | CEM | DOC | CW | REA | MB | \$W | \$F | \$G | \$B | \$C |
|----------------------------------|-----|-------|-----|----|--------|-----|------------|-----|-----|-----|-----|-----|-----|-----|
| 7 | 1.5 | 65 | 122 | 24 | 11 | 18 | 51 | .51 | .58 | 54 | 106 | 46 | 152 | 254 |
| BREED PERCENTILE RANKING PER EPD | | | | | | | | | | | | | | |
| 45 | 55 | 55 | 45 | 65 | 25 | 60 | 60 | 75 | 65 | 70 | 25 | 65 | 50 | 55 |
| Breed % | | 100AN | | | OWNER: | | Ward Farms | | | | | | | |

Angus

145

Ward Growth Fund 360

DEER VALLEY GROWTH FUND
SAMPSON GROWTH FUND 115
SAMPSON BLACKBIRD 1709

WARD TRACTION 247
WARD EXPRESS 9028
WARD EXPRESS 297

| | |
|--------|-----------|
| REG #: | 21141087 |
| BD: | 10/5/2023 |
| BW: | 68 |
| WW: | 653 |

| CE | BW | WW | YW | MK | CEM | DOC | CW | REA | MB | \$W | \$F | \$G | \$B | \$C |
|----------------------------------|------|-------|-----|----|--------|-----|------------|-----|----|-----|-----|-----|-----|-----|
| 10 | -0.3 | 60 | 110 | 24 | 10 | | | | | 52 | 79 | | | |
| BREED PERCENTILE RANKING PER EPD | | | | | | | | | | | | | | |
| 25 | 20 | 70 | 65 | 65 | 30 | | | | | 75 | 75 | | | |
| Breed % | | 100AN | | | OWNER: | | Ward Farms | | | | | | | |

Angus

146

Ward Growth Fund 381

DEER VALLEY GROWTH FUND
SAMPSON GROWTH FUND 115
SAMPSON BLACKBIRD 1709

BC LOYAL C1951
WARD ERICA 011
WARD ERICA 148

| | |
|--------|------------|
| REG #: | 21141077 |
| BD: | 10/15/2023 |
| BW: | 71 |
| WW: | 627 |

| CE | BW | WW | YW | MK | CEM | DOC | CW | REA | MB | \$W | \$F | \$G | \$B | \$C |
|----------------------------------|------|-------|-----|----|--------|-----|------------|-----|----|-----|-----|-----|-----|-----|
| 10 | -0.2 | 61 | 111 | 21 | 9 | | | | | 50 | 79 | | | |
| BREED PERCENTILE RANKING PER EPD | | | | | | | | | | | | | | |
| 25 | 20 | 70 | 65 | 85 | 40 | | | | | 80 | 75 | | | |
| Breed % | | 100AN | | | OWNER: | | Ward Farms | | | | | | | |

Angus

147

Ward Growth Fund 359

DEER VALLEY GROWTH FUND
SAMPSON GROWTH FUND 115
SAMPSON BLACKBIRD 1709

BC LOYAL C1951
WARD EILEENMERE 9033
JM LADY 1014 TOTAL M836-J353

| | |
|--------|------------|
| REG #: | 21141116 |
| BD: | 10/30/2023 |
| BW: | 70 |
| WW: | 673 |

| CE | BW | WW | YW | MK | CEM | DOC | CW | REA | MB | \$W | \$F | \$G | \$B | \$C |
|----------------------------------|------|-------|-----|----|--------|-----|------------|-----|-----|-----|-----|-----|-----|-----|
| 12 | -1.2 | 61 | 109 | 24 | 10 | 15 | 43 | .57 | .47 | 59 | 90 | 41 | 131 | 231 |
| BREED PERCENTILE RANKING PER EPD | | | | | | | | | | | | | | |
| 10 | 10 | 70 | 65 | 65 | 30 | 70 | 80 | 65 | 75 | 60 | 55 | 75 | 75 | 75 |
| Breed % | | 100AN | | | OWNER: | | Ward Farms | | | | | | | |

About Balancer® Bulls

The Profitable Blend of Angus and Gelbvieh Genetics!

Balancer hybrids offer a simple and powerful way to maintain hybrid vigor and the proper blend of British and Continental genetics in your cowherd without complicated crossbreeding systems. Registered Balancer hybrids combine the Angus advantages of calving ease, moderate mature size, marbling and convenience traits with Gelbvieh growth, muscle leanness, fertility and unequaled pounds of calf per cow exposed in a single animal. And, documented research proves that Balancer hybrids offer the same consistency as their purebred parents with improved uniformity of composition. Plus, Balancers are registered seedstock, complete with documented parentage and EPD's. Balancer bulls are registered as Gelbvieh and Angus or Red Angus hybrids with a minimum of 75% of the pedigree documented and with both the sire and the dam recorded with their respective association. There are also registered Hybrid bulls in this category, the difference being a varying percentage of Gelbvieh as well as a mixture of other breeds. These bulls can be used in a similar way as the Balancer bulls as long as the buyer is aware of the actual breed makeup as close as can be known.

Both the Balancer & Hybrid bulls' EPD's are figured on the Gelbvieh base and can be compared to the Gelbvieh bulls. The average EPD's for Balancer bulls as of 1/14/2025 are:

CE: 13 BW: -0.5 WW: 73 YW: 114 Milk: 24 TM: 60 CEM: 7 ST: 15
DOC: 12 CW: 38 REA: .52 MB: .38 \$C: 107.46 FPI: 83.08 EPI: 117.36

Balancer

Black

Homo Polled

148

TMGC SB Cactus 85L

TMMW DESTINATION 82Y
BTBR SAGUARO 8111F ET
JEB BCC MISS OBJECTIVE 41W

BNG OVERTIME 23Y
TMGC SB OT OF 36X 78F ET
TMGC 36X

| | |
|--------|----------|
| REG #: | 1567029 |
| BD: | 3/2/2023 |
| BW: | 77 |
| WW: | 633 |

| CE | BW | WW | YW | MK | TM | CEM | ST | DOC | CW | REA | MB | \$C | FPI | EPI |
|----------------------------------|-----|-----------|-----|----|--------|-----|---------------|-----|----|-----|-----|--------|-------|--------|
| 12 | 3.3 | 91 | 143 | 21 | 67 | 7 | 17 | 14 | 49 | .40 | .53 | 121.72 | 92.36 | 178.61 |
| BREED PERCENTILE RANKING PER EPD | | | | | | | | | | | | | | |
| 65 | >95 | 3 | 5 | 75 | 15 | 45 | 20 | 15 | 20 | 75 | 20 | 25 | 15 | 5 |
| Breed % | | 56GV 44AN | | | OWNER: | | Stuecken Bros | | | | | | | |

Balancer

Red (DC)

Homo Polled

149

BRNS 311L

RAB BIEBER HARD DRIVE Y120
DBRG MR HARD DRIVE 0175H ET
DBRG MS WINTHROP 330A

KRT LAZY TV FLAT IRON U225
BRNS 1512C
ABF 6058S

| | |
|--------|----------|
| REG #: | 1600409 |
| BD: | 4/5/2023 |
| BW: | 78 |
| WW: | 571 |

| CE | BW | WW | YW | MK | TM | CEM | ST | DOC | CW | REA | MB | \$C | FPI | EPI |
|----------------------------------|------|-----------|-----|----|--------|-----|----------------|-----|----|-----|-----|--------|-------|--------|
| 14 | -1.8 | 74 | 119 | 21 | 58 | 10 | 15 | 15 | 32 | .79 | .29 | 104.60 | 84.07 | 123.38 |
| BREED PERCENTILE RANKING PER EPD | | | | | | | | | | | | | | |
| 40 | 25 | 45 | 40 | 75 | 65 | 10 | 45 | 5 | 70 | 10 | 70 | 60 | 45 | 45 |
| Breed % | | 50GV 50AR | | | OWNER: | | Burns Gelbvieh | | | | | | | |

BALANCER BULLS

Balancer Homo Black Homo Polled **150-**
DAMG Extreme Stock Opt 74L

CCRO CAROLINA LEVERAGE 3214A
 DCH HILLE STOCK OPTIONS D410
 DCH HILLE B189 ET

JJNR MONEY TALKS B43C
 DAMG GENUINE MONEY TALKS 2G
 JGGP WILMA 741E

| | |
|--------|-----------|
| REG #: | 1574275 |
| BD: | 7/18/2023 |
| BW: | 88 |
| WW: | 626 |

| CE | BW | WW | YW | MK | TM | CEM | ST | DOC | CW | REA | MB | \$C | FPI | EPI |
|----------------------------------|-----|-----------|-----|----|--------|-----|---------------------|-----|----|-----|-----|--------|-------|--------|
| 12 | 3.3 | 98 | 142 | 26 | 75 | 7 | 17 | 17 | 52 | .71 | .40 | 130.07 | 93.92 | 153.67 |
| BREED PERCENTILE RANKING PER EPD | | | | | | | | | | | | | | |
| 65 | >95 | 1 | 10 | 25 | 2 | 45 | 20 | 1 | 15 | 15 | 45 | 15 | 10 | 20 |
| Breed % | | 72GV 28AN | | | OWNER: | | Reinert Family Farm | | | | | | | |

Balancer Black Homo Polled **153-**
KZC L167

SFGC FORTUNE HAWK 534C
 KZC HAWK F213
 NEWF 7D

RLS REGULAR STANDARD 321A ET
 KZC F57
 KZC C22

| | |
|--------|-----------|
| REG #: | 1612236 |
| BD: | 7/24/2023 |
| BW: | 78 |
| WW: | 594 |

| CE | BW | WW | YW | MK | TM | CEM | ST | DOC | CW | REA | MB | \$C | FPI | EPI |
|----------------------------------|-----|---------------|-----|----|--------|-----|-------------------|-----|----|-----|-----|-------|-------|--------|
| 12 | 0.4 | 70 | 108 | 26 | 62 | 5 | 12 | 11 | 35 | .58 | .40 | 85.67 | 81.11 | 195.03 |
| BREED PERCENTILE RANKING PER EPD | | | | | | | | | | | | | | |
| 65 | 70 | 65 | 65 | 25 | 40 | 80 | 85 | 75 | 60 | 40 | 45 | 90 | 60 | 2 |
| Breed % | | 48GV 46AN 6AR | | | OWNER: | | KZ Cattle Company | | | | | | | |

GE-EPDS ARE PENDING A RE-TEST

Balancer Homo Black Homo Polled **151-**
RFFM Highlife Victor 75L

JKGF DITKA C85
 LRSH HIGH LIFE H64
 SINK MS EDISON 319A

NORG COMBAT READY D54
 RFFM MS 34F COMBAT READY 34H
 RFFM FINCH DESTINATION 34F

| | |
|--------|-----------|
| REG #: | 1574928 |
| BD: | 7/21/2023 |
| BW: | 86 |
| WW: | 612 |

| CE | BW | WW | YW | MK | TM | CEM | ST | DOC | CW | REA | MB | \$C | FPI | EPI |
|----------------------------------|-----|-----------|-----|----|--------|-----|---------------------|-----|----|-----|------|--------|-------|--------|
| 12 | 0.9 | 94 | 147 | 22 | 69 | 7 | 14 | 14 | 62 | .88 | -.10 | 100.41 | 81.66 | 164.52 |
| BREED PERCENTILE RANKING PER EPD | | | | | | | | | | | | | | |
| 65 | 80 | 2 | 4 | 65 | 10 | 45 | 60 | 15 | 3 | 4 | >95 | 70 | 55 | 10 |
| Breed % | | 64GV 36AN | | | OWNER: | | Reinert Family Farm | | | | | | | |

Balancer Black Homo Polled **154-**
NORG Baseline L16

EGL LIFELINE B101
 PROB NORG BASELINE 2H
 PROB MISS HICKOK 307F

NORG LUCKY F780
 NORG LINDA J61
 NORG LINDA A61

| | |
|--------|----------|
| REG #: | 1582083 |
| BD: | 8/7/2023 |
| BW: | 66 |
| WW: | 667 |

| CE | BW | WW | YW | MK | TM | CEM | ST | DOC | CW | REA | MB | \$C | FPI | EPI |
|----------------------------------|-----|-----------|-----|----|--------|-----|------------------|-----|----|-----|-----|-------|-------|--------|
| 13 | 0.5 | 87 | 128 | 25 | 69 | 5 | 12 | 12 | 50 | .71 | .34 | 86.22 | 89.16 | 104.72 |
| BREED PERCENTILE RANKING PER EPD | | | | | | | | | | | | | | |
| 50 | 75 | 10 | 20 | 35 | 10 | 80 | 85 | 50 | 15 | 15 | 60 | 90 | 25 | 65 |
| Breed % | | 60GV 40AN | | | OWNER: | | Norwood Gelbvieh | | | | | | | |

Balancer Black Homo Polled **152-**
GMF 317L

SANDPOINT BUTKUS X797
 PANTHER CR BUTKUS 6703
 PATHER CR ERROLINE 400

DCSF POST ROCK POWER BUILT 37B8
 HRRR 15J
 CIRS 2206Z

| | |
|--------|-----------|
| REG #: | 1585482 |
| BD: | 7/22/2023 |
| BW: | 84 |
| WW: | 635 |

| CE | BW | WW | YW | MK | TM | CEM | ST | DOC | CW | REA | MB | \$C | FPI | EPI |
|----------------------------------|-----|---------------|-----|----|--------|-----|---------------------------|-----|----|-----|-----|-----|-------|-----|
| 13 | 0.0 | 74 | 120 | 19 | 61 | 9 | 11 | 10 | 44 | .40 | .34 | | 81.40 | |
| BREED PERCENTILE RANKING PER EPD | | | | | | | | | | | | | | |
| 50 | 60 | 45 | 35 | 85 | 45 | 15 | 95 | 90 | 30 | 75 | 60 | | 60 | |
| Breed % | | 44GV 53AN 3AR | | | OWNER: | | Meng Farms Cattle Company | | | | | | | |

Balancer Homo Black Homo Polled **155-**
KZC L162

SPFR 204Z
 KZC E71
 ABF 2207Z

SFGC FORTUNE HAWK 534C
 KZC F35
 KZC D44

| | |
|--------|-----------|
| REG #: | 1612242 |
| BD: | 8/18/2023 |
| BW: | 85 |
| WW: | 640 |

| CE | BW | WW | YW | MK | TM | CEM | ST | DOC | CW | REA | MB | \$C | FPI | EPI |
|----------------------------------|-----|-----------|-----|----|--------|-----|-------------------|-----|----|------|-----|-------|-------|--------|
| 11 | 0.9 | 82 | 117 | 28 | 68 | 6 | 11 | 15 | 46 | 1.07 | .46 | 82.63 | 88.69 | 162.59 |
| BREED PERCENTILE RANKING PER EPD | | | | | | | | | | | | | | |
| 80 | 80 | 20 | 45 | 15 | 15 | 65 | 95 | 5 | 25 | 1 | 30 | 95 | 25 | 15 |
| Breed % | | 75GV 25AN | | | OWNER: | | KZ Cattle Company | | | | | | | |



Balancer Black Homo Polled **156-**
NORG Big Whiskey L26

VRT LAZY TV SAM U451
 PROB NORG BIG WHISKEY 12H
 PROB MISS JUSTICE 317F

E A F UPWARD 759U
 NORG HONEY B26
 NORG W26

| | |
|--------|-----------|
| REG #: | 1582061 |
| BD: | 8/19/2023 |
| BW: | 78 |
| WW: | 617 |

| CE | BW | WW | YW | MK | TM | CEM | ST | DOC | CW | REA | MB | \$C | FPI | EPI |
|----------------------------------|-----|---------------|-----|----|--------|-----|------------------|-----|----|-----|-----|--------|-------|-------|
| 13 | 0.3 | 70 | 112 | 26 | 62 | 7 | 20 | 14 | 35 | .66 | .36 | 136.87 | 80.91 | 86.29 |
| BREED PERCENTILE RANKING PER EPD | | | | | | | | | | | | | | |
| 50 | 70 | 65 | 55 | 25 | 40 | 45 | 3 | 15 | 60 | 25 | 55 | 10 | 60 | 85 |
| Breed % | | 69GV 25AN 6AR | | | OWNER: | | Norwood Gelbvieh | | | | | | | |

BALANCER BULLS

Balancer Homo Black Homo Polled **157**
TMMW Mr Treasure 106L

MGR TREASURE
 TAU FORTUNE 8H ET
 TAU MS GUNNISON 106R 3147A

TMMW MR GRANITE 180A
 TMMW MISS GRANITE 39E
 TMMW BISMARCKS MISS DYNAMIC 7A

| | |
|--------|----------|
| REG #: | 1591263 |
| BD: | 9/1/2023 |
| BW: | 70 |
| WW: | 727 |



| CE | BW | WW | YW | MK | TM | CEM | ST | DOC | CW | REA | MB | \$C | FPI | EPI |
|----------------------------------|-----|-----------|-----|----|--------|-----|------------------|-----|----|-----|-----|--------|-------|--------|
| 12 | 1.8 | 86 | 140 | 24 | 68 | 9 | 18 | 14 | 44 | .45 | .36 | 123.19 | 86.86 | 141.03 |
| BREED PERCENTILE RANKING PER EPD | | | | | | | | | | | | | | |
| 65 | 95 | 10 | 10 | 45 | 15 | 15 | 10 | 15 | 30 | 65 | 55 | 20 | 30 | 30 |
| Breed % | | 50GV 50AN | | | OWNER: | | Mulroy Farms LLC | | | | | | | |

Balancer Homo Black Homo Polled **158**
NGCC NG Wideload L52

JJNR MR PAYWEIGHT B42E
 JJNR MR WIDELoad B25J
 JJNR MISS B29 B69F

JOSH MR DITKA 624E
 NGCC NG CADDY J529
 NGCC NG CADDY E519

| | |
|--------|----------|
| REG #: | 1581513 |
| BD: | 9/1/2023 |
| BW: | 72 |
| WW: | 574 |

| CE | BW | WW | YW | MK | TM | CEM | ST | DOC | CW | REA | MB | \$C | FPI | EPI |
|----------------------------------|-----|---------------|-----|----|--------|-----|--------------------|-----|----|-----|-----|--------|-------|--------|
| 10 | 1.7 | 86 | 138 | 27 | 70 | 6 | 14 | 12 | 38 | .61 | .31 | 107.52 | 87.16 | 140.08 |
| BREED PERCENTILE RANKING PER EPD | | | | | | | | | | | | | | |
| 90 | 90 | 10 | 10 | 20 | 10 | 65 | 60 | 50 | 50 | 30 | 65 | 50 | 30 | 30 |
| Breed % | | 56GV 42AN 2XX | | | OWNER: | | Narrow Gate Cattle | | | | | | | |

Balancer Homo Black Homo Polled **161**
LAW Mark 331L

DLW TPG JACKPOT 7551B ET
 BWF BRANDYWINE GUNNAR 942G
 BWF 208Z

BYERGO BLACK MAGIC 3348
 FHCC PERFECTION 0421
 WA MS PERFECTION 9018-2813

| | |
|--------|----------|
| REG #: | 1583808 |
| BD: | 9/4/2023 |
| BW: | 89 |
| WW: | 641 |

| CE | BW | WW | YW | MK | TM | CEM | ST | DOC | CW | REA | MB | \$C | FPI | EPI |
|----------------------------------|-----|-----------|-----|----|--------|-----|--------------|-----|----|-----|-----|-----|-------|-----|
| 7 | 2.3 | 88 | 150 | 25 | 69 | 4 | 12 | 15 | 60 | .83 | .52 | | 90.26 | |
| BREED PERCENTILE RANKING PER EPD | | | | | | | | | | | | | | |
| >95 | 95 | 10 | 3 | 35 | 10 | 95 | 85 | 5 | 4 | 10 | 20 | | 20 | |
| Breed % | | 50GV 50AN | | | OWNER: | | Lawman Farms | | | | | | | |

Balancer Homo Black Homo Polled **159**
TMMW Mr Derecho 108L

DBRG WHIRLWIND 735E
 VRT LAZY TV DERECHO J660
 VRT LAZY TV WINNIE G133

TMMW MR GRANITE 180A
 TMMW MISS GRANITE 211F
 TMMW MISS NEVADA 75C

| | |
|--------|----------|
| REG #: | 1591265 |
| BD: | 9/2/2023 |
| BW: | 67 |
| WW: | 520 |

| CE | BW | WW | YW | MK | TM | CEM | ST | DOC | CW | REA | MB | \$C | FPI | EPI |
|----------------------------------|------|-----------|----|----|--------|-----|------------------|-----|-----|-----|-----|--------|-------|--------|
| 17 | -6.8 | 56 | 90 | 25 | 53 | 11 | 19 | 13 | 15 | .15 | .25 | 123.02 | 77.98 | 163.58 |
| BREED PERCENTILE RANKING PER EPD | | | | | | | | | | | | | | |
| 10 | 1 | >95 | 95 | 35 | 85 | 3 | 5 | 30 | >95 | 80 | 20 | 75 | 15 | |
| Breed % | | 56GV 44AN | | | OWNER: | | Mulroy Farms LLC | | | | | | | |

Balancer Homo Black Homo Polled **162**
RUR Desert Dream 27L

TMMW DESTINATION 82Y
 BTBR SAGUARO 8111F ET
 JEB BCC MISS OBJECTIVE 41W

THM TOUR OBJECTIVE 386-523
 TMGC SB ESSENTIAL 27F
 TMGC SB BRIDGET 71D

| | |
|--------|----------|
| REG #: | 1592562 |
| BD: | 9/4/2023 |
| BW: | 68 |
| WW: | 541 |

| CE | BW | WW | YW | MK | TM | CEM | ST | DOC | CW | REA | MB | \$C | FPI | EPI |
|----------------------------------|-----|-----------|-----|----|--------|-----|-----------------|-----|----|-----|-----|--------|-------|--------|
| 15 | 0.0 | 76 | 128 | 23 | 61 | 10 | 14 | 12 | 57 | .69 | .51 | 104.31 | 89.04 | 136.02 |
| BREED PERCENTILE RANKING PER EPD | | | | | | | | | | | | | | |
| 25 | 60 | 40 | 20 | 55 | 45 | 10 | 60 | 50 | 10 | 20 | 20 | 60 | 25 | 30 |
| Breed % | | 51GV 49AN | | | OWNER: | | Rockin'-U-Ranch | | | | | | | |

Balancer Homo Black Homo Polled **160**
BRNS 361L

DLW LIFELINE 5065E
 TMMW MR LIFELINE 63H
 TMMW MISS NEVADA 54B

TMMW MR BANKER 215C
 BRNS 061H
 DRGF 395A

| | |
|--------|----------|
| REG #: | 1613490 |
| BD: | 9/4/2023 |
| BW: | 82 |
| WW: | 523 |

| CE | BW | WW | YW | MK | TM | CEM | ST | DOC | CW | REA | MB | \$C | FPI | EPI |
|----------------------------------|-----|-----------|-----|-----|--------|-----|----------------|-----|----|-----|-----|-------|-------|-------|
| 12 | 1.5 | 79 | 125 | 16 | 55 | 6 | 11 | 12 | 50 | .58 | .39 | 79.08 | 82.80 | 96.74 |
| BREED PERCENTILE RANKING PER EPD | | | | | | | | | | | | | | |
| 65 | 90 | 25 | 25 | >95 | 80 | 65 | 95 | 50 | 15 | 40 | 45 | 95 | 50 | 75 |
| Breed % | | 49GV 51AN | | | OWNER: | | Burns Gelbvieh | | | | | | | |

Balancer Homo Black Homo Polled **163**
RDW 318L

TMMW DESTINATION 82Y
 MTB BCC PEDRO 6A
 JEB BCC MISS OBJECTIVE 41W

JJNR READY CASH B52C
 RDW 605F WTL
 RDW MISS BABY BLACK 143Y

| | |
|--------|----------|
| REG #: | 1594275 |
| BD: | 9/7/2023 |
| BW: | 73 |
| WW: | 559 |

| CE | BW | WW | YW | MK | TM | CEM | ST | DOC | CW | REA | MB | \$C | FPI | EPI |
|----------------------------------|-----|-----------|-----|----|--------|-----|----------------|-----|----|-----|-----|--------|-------|--------|
| 12 | 0.8 | 74 | 120 | 22 | 59 | 8 | 16 | 14 | 32 | .42 | .45 | 110.87 | 83.52 | 136.25 |
| BREED PERCENTILE RANKING PER EPD | | | | | | | | | | | | | | |
| 65 | 80 | 45 | 35 | 65 | 55 | 30 | 30 | 15 | 70 | 70 | 35 | 45 | 50 | 30 |
| Breed % | | 55GV 45AN | | | OWNER: | | Rex Wood Farms | | | | | | | |

BALANCER BULLS



Balancer Homo Black Homo Polled **167**
RDW 327L

SYDGEN ENHANCE
 MSHP SMOKEYS MOONSHINER
 MTB BCC MISS BALANCE 46A
 JBOB CAROLINA FORTUNE 2564J ET
 RDW 154B
 RAZ MISS CORRINE 527R

| | |
|--------|----------|
| REG #: | 1594281 |
| BD: | 9/8/2023 |
| BW: | 70 |
| WW: | 696 |

| CE | BW | WW | YW | MK | TM | CEM | ST | DOC | CW | REA | MB | \$C | FPI | EPI |
|----------------------------------|------|----|-----------|----|----|--------|----|-----|----------------|-----|-----|-------|-------|--------|
| 18 | -2.1 | 76 | 121 | 28 | 67 | 8 | 11 | 15 | 33 | .19 | .55 | 80.10 | 91.89 | 130.55 |
| BREED PERCENTILE RANKING PER EPD | | | | | | | | | | | | | | |
| 5 | 20 | 40 | 35 | 15 | 15 | 30 | 95 | 5 | 65 | >95 | 15 | 95 | 15 | 40 |
| Breed % | | | 50GV 50AN | | | OWNER: | | | Rex Wood Farms | | | | | |

Balancer Homo Black Homo Polled **164**
RUR Bruno 182L

TMMW DESTINATION 82Y
 BTBR SAGUARO 8111F ET
 JEB BCC MISS OBJECTIVE 41W
 JKGF CHIEF JUSTICE C205
 RUR SHINING STAR 82H
 RUR MISS BRANDY 81A

| | |
|--------|----------|
| REG #: | 1592575 |
| BD: | 9/7/2023 |
| BW: | 68 |
| WW: | 672 |

| CE | BW | WW | YW | MK | TM | CEM | ST | DOC | CW | REA | MB | \$C | FPI | EPI |
|----------------------------------|------|----|-----------|----|----|--------|----|-----|-----------------|-----|-----|--------|-------|--------|
| 11 | -0.9 | 80 | 128 | 23 | 63 | 7 | 19 | 10 | 43 | .61 | .34 | 134.27 | 86.39 | 139.53 |
| BREED PERCENTILE RANKING PER EPD | | | | | | | | | | | | | | |
| 80 | 40 | 25 | 20 | 55 | 35 | 45 | 5 | 90 | 30 | 30 | 60 | 10 | 35 | 30 |
| Breed % | | | 69GV 31AN | | | OWNER: | | | Rockin'-U-Ranch | | | | | |

Balancer Homo Black Homo Polled **168**
GATS Gatson Dir Dr Lanny 325L

V A R DISCOVERY 2240
 JNCC DIRECT DRIVE 590C
 JNCC RIKKI FORTUNE 09X
 BWF BRANDYWINE ZORRO 275Z
 GATS GATSON ZORRO ALL BU GAL 955G
 TMGC SB MADONNA 151B

| | |
|--------|----------|
| REG #: | 1578515 |
| BD: | 9/9/2023 |
| BW: | 78 |
| WW: | 577 |

| CE | BW | WW | YW | MK | TM | CEM | ST | DOC | CW | REA | MB | \$C | FPI | EPI |
|----------------------------------|-----|----|-----------|----|----|--------|----|-----|-----------------|-----|-----|--------|-------|--------|
| 12 | 1.7 | 82 | 129 | 20 | 60 | 8 | 18 | 12 | 42 | .64 | .54 | 123.89 | 89.79 | 120.17 |
| BREED PERCENTILE RANKING PER EPD | | | | | | | | | | | | | | |
| 65 | 90 | 20 | 20 | 80 | 50 | 30 | 10 | 50 | 35 | 25 | 20 | 20 | 20 | 50 |
| Breed % | | | 68GV 32AN | | | OWNER: | | | Gatson Gelbvieh | | | | | |

Balancer Homo Black Homo Polled **165**
BRNS 367L

BTBR MR BLACK CROSS 8220 ET
 SKF DUNN'S ABSOLUTE PROBITY 232H
 SKF DUNNS MISS ABSOLUTE 702E
 TMMW MR BANKER 215C
 BRNS 164J
 BRNS 988G

| | |
|--------|----------|
| REG #: | 1613494 |
| BD: | 9/8/2023 |
| BW: | 72 |
| WW: | 559 |

| CE | BW | WW | YW | MK | TM | CEM | ST | DOC | CW | REA | MB | \$C | FPI | EPI |
|----------------------------------|------|----|-----------|----|----|--------|----|-----|----------------|-----|-----|--------|-------|--------|
| 18 | -0.7 | 78 | 130 | 19 | 58 | 8 | 16 | 14 | 39 | .54 | .37 | 109.06 | 87.58 | 208.16 |
| BREED PERCENTILE RANKING PER EPD | | | | | | | | | | | | | | |
| 5 | 45 | 30 | 20 | 85 | 65 | 30 | 30 | 15 | 45 | 45 | 50 | 50 | 30 | 1 |
| Breed % | | | 56GV 44AN | | | OWNER: | | | Burns Gelbvieh | | | | | |

Balancer Homo Black Homo Polled **169**
RUR Saguro Hijo D212L

TMMW DESTINATION 82Y
 BTBR SAGUARO 8111F ET
 JEB BCC MISS OBJECTIVE 41W
 DLW ALUMNI 7513A ET
 DMP H212
 DMP Z121

| | |
|--------|----------|
| REG #: | 1592580 |
| BD: | 9/9/2023 |
| BW: | 72 |
| WW: | 594 |

| CE | BW | WW | YW | MK | TM | CEM | ST | DOC | CW | REA | MB | \$C | FPI | EPI |
|----------------------------------|------|----|-----------|----|----|--------|----|-----|-----------------|-----|-----|--------|-------|--------|
| 13 | -0.4 | 85 | 136 | 18 | 60 | 8 | 18 | 9 | 45 | .58 | .50 | 127.22 | 93.23 | 159.41 |
| BREED PERCENTILE RANKING PER EPD | | | | | | | | | | | | | | |
| 50 | 50 | 10 | 10 | 90 | 50 | 30 | 10 | 95 | 25 | 40 | 25 | 15 | 10 | 15 |
| Breed % | | | 71GV 29AN | | | OWNER: | | | Rockin'-U-Ranch | | | | | |

Balancer Homo Black Homo Polled **166**
DRGF 324L

GMF FORTUNE 616D
 HRZN H182
 HRZN E103
 ABF 8139U
 ABF 2235Z
 ABF 5007R

| | |
|--------|----------|
| REG #: | 1601553 |
| BD: | 9/8/2023 |
| BW: | 73 |
| WW: | 650 |

| CE | BW | WW | YW | MK | TM | CEM | ST | DOC | CW | REA | MB | \$C | FPI | EPI |
|----------------------------------|------|----|-----------|----|----|--------|----|-----|---------------------|-----|-----|--------|-------|-------|
| 13 | -0.7 | 64 | 96 | 27 | 59 | 7 | 18 | 9 | 47 | .69 | .39 | 119.93 | 78.56 | 94.62 |
| BREED PERCENTILE RANKING PER EPD | | | | | | | | | | | | | | |
| 50 | 45 | 85 | 90 | 20 | 55 | 45 | 10 | 95 | 20 | 20 | 45 | 25 | 75 | 75 |
| Breed % | | | 67GV 33AN | | | OWNER: | | | Duck River Gelbvieh | | | | | |

Balancer Homo Black Homo Polled **170**
WNBE 333L

KCF BENNETT U271
 DLW ALUMNI 7513A ET
 DLW MS MATRON 802U
 KCF BENNETT QUALITY FOCUSED
 DCSF POST ROCK TWILA 167A8
 DCSF POST ROCK TWILA 234Y2 ET

| | |
|--------|----------|
| REG #: | 1578639 |
| BD: | 9/9/2023 |
| BW: | 89 |
| WW: | 705 |

| CE | BW | WW | YW | MK | TM | CEM | ST | DOC | CW | REA | MB | \$C | FPI | EPI |
|----------------------------------|-----|----|-----------|----|----|--------|----|-----|--------------------|-----|-----|--------|-------|--------|
| 11 | 3.4 | 95 | 150 | 25 | 73 | 5 | 15 | 12 | 48 | .76 | .16 | 108.67 | 87.09 | 182.04 |
| BREED PERCENTILE RANKING PER EPD | | | | | | | | | | | | | | |
| 80 | >95 | 2 | 3 | 35 | 3 | 80 | 45 | 50 | 20 | 10 | 95 | 50 | 30 | 5 |
| Breed % | | | 67GV 33AN | | | OWNER: | | | Wannabe Stock Farm | | | | | |

BALANCER BULLS

Balancer Homo Black Homo Polled **171**
TMGC SB Cactus 164L

TMMW DESTINATION 82Y
 BTBR SAGUARO 8111F ET
 JEB BCC MISS OBJECTIVE 41W

JGPG COPPERFIELD 904G
 TMGC SB CLAY HOTTIE 287J
 TMGC SB HILDA 130B

| | |
|--------|-----------|
| REG #: | 1587945 |
| BD: | 9/11/2023 |
| BW: | 67 |
| WW: | 646 |

| CE | BW | WW | YW | MK | TM | CEM | ST | DOC | CW | REA | MB | \$C | FPI | EPI | | |
|----------------------------------|------|-----------|-----|----|--------|-----|---------------|-----|----|-----|-----|--------|-------|--------|--|--|
| 16 | -3.2 | 70 | 110 | 21 | 56 | 10 | 19 | 14 | 42 | .41 | .58 | 125.48 | 89.26 | 165.87 | | |
| BREED PERCENTILE RANKING PER EPD | | | | | | | | | | | | | | | | |
| 15 | 10 | 65 | 60 | 75 | 75 | 10 | 5 | 15 | 35 | 75 | 15 | 20 | 25 | 10 | | |
| Breed % | | 61GV 39AN | | | OWNER: | | Stuecken Bros | | | | | | | | | |

Balancer Black Polled **175**
GATS Gatson # Lucky Charms 341L

DCH HILLE D453
 GLM HASHTAG# H11
 GLM W55

VWF ZEUS Z10
 TMGC SB VENUS 153B
 TMGC SB SPLENDOR 327Z

| | |
|--------|-----------|
| REG #: | 1579159 |
| BD: | 9/15/2023 |
| BW: | 92 |
| WW: | 699 |

| CE | BW | WW | YW | MK | TM | CEM | ST | DOC | CW | REA | MB | \$C | FPI | EPI | | |
|----------------------------------|------|---------------|-----|----|--------|-----|-----------------|-----|----|-----|-----|--------|-------|--------|--|--|
| 13 | -0.1 | 85 | 132 | 26 | 68 | 7 | 19 | 16 | 46 | .64 | .29 | 131.84 | 87.92 | 170.84 | | |
| BREED PERCENTILE RANKING PER EPD | | | | | | | | | | | | | | | | |
| 50 | 60 | 10 | 15 | 25 | 15 | 45 | 5 | 2 | 25 | 25 | 70 | 10 | 30 | 10 | | |
| Breed % | | 72GV16AN 12AR | | | OWNER: | | Gatson Gelbvieh | | | | | | | | | |

Balancer Homo Black Homo Polled **172**
JEB BCC Black Balance 16L

CCRO CAROLINA LEVERAGE 3214A
 ERTL BARGAINING CHIP D677
 KCS BLACKBIRD 7707

BNG OVERTIME 23Y
 JEB BCC MS OVERTIME 8F
 JEB BCC MISS BALANCE 15A

| | |
|--------|-----------|
| REG #: | 1593680 |
| BD: | 9/13/2023 |
| BW: | 72 |
| WW: | 568 |

| CE | BW | WW | YW | MK | TM | CEM | ST | DOC | CW | REA | MB | \$C | FPI | EPI | | |
|----------------------------------|------|-----------|-----|----|--------|-----|------------------------|-----|----|-----|-----|--------|-------|--------|--|--|
| 12 | -0.7 | 79 | 118 | 25 | 64 | 7 | 19 | 12 | 46 | .43 | .69 | 128.86 | 93.26 | 140.66 | | |
| BREED PERCENTILE RANKING PER EPD | | | | | | | | | | | | | | | | |
| 65 | 45 | 25 | 40 | 35 | 30 | 45 | 5 | 50 | 25 | 70 | 5 | 15 | 10 | 30 | | |
| Breed % | | 47GV 53AN | | | OWNER: | | Burbank Cattle Company | | | | | | | | | |

Balancer Homo Black Homo Polled **176**
TMGC SB Civil War 177L

V A R DISCOVERY 2240
 JKG CIVIL WAR E92
 JKG LOTTIE C92

BTBR SAGUARO 8111F ET
 TMGC SB VERBENA 159J
 TMGC SB TRIBUTE 110G

| | |
|--------|-----------|
| REG #: | 1587959 |
| BD: | 9/15/2023 |
| BW: | 72 |
| WW: | 673 |

| CE | BW | WW | YW | MK | TM | CEM | ST | DOC | CW | REA | MB | \$C | FPI | EPI | | |
|----------------------------------|------|---------------|-----|----|--------|-----|---------------|-----|----|-----|-----|--------|-------|--------|--|--|
| 13 | -0.6 | 83 | 130 | 20 | 61 | 9 | 20 | 11 | 28 | .43 | .41 | 143.45 | 89.28 | 142.38 | | |
| BREED PERCENTILE RANKING PER EPD | | | | | | | | | | | | | | | | |
| 50 | 50 | 15 | 20 | 80 | 45 | 15 | 3 | 75 | 80 | 70 | 40 | 3 | 20 | 25 | | |
| Breed % | | 56GV 41AN 3AR | | | OWNER: | | Stuecken Bros | | | | | | | | | |

Balancer Homo Black Homo Polled **173**
TMMW Mr Derecho 123L

DBRG WHIRLWIND 735E
 VRT LAZY TV DERECHO J660
 VRT LAZY TV WINNIE G133

STG MR MEDINA 51Y14
 TMMW MISS MEDINA 195D
 TMMW GRANITES MISS SALLY 66Y

| | |
|--------|-----------|
| REG #: | 1591281 |
| BD: | 9/13/2023 |
| BW: | 75 |
| WW: | 643 |

| CE | BW | WW | YW | MK | TM | CEM | ST | DOC | CW | REA | MB | \$C | FPI | EPI | | |
|----------------------------------|------|-----------|-----|----|--------|-----|------------------|-----|----|-----|-----|-------|-------|--------|--|--|
| 12 | -1.4 | 73 | 110 | 26 | 62 | 6 | 13 | 12 | 26 | .39 | .16 | 93.76 | 78.28 | 188.08 | | |
| BREED PERCENTILE RANKING PER EPD | | | | | | | | | | | | | | | | |
| 65 | 30 | 50 | 60 | 25 | 40 | 65 | 70 | 50 | 85 | 75 | 95 | 80 | 75 | 3 | | |
| Breed % | | 63GV 37AN | | | OWNER: | | Mulroy Farms LLC | | | | | | | | | |

Balancer Homo Black Homo Polled **177**
DRGF 341L

GMF FORTUNE 616D
 HRZN H182
 HRZN E103

JEB BCC BLACK BALANCE 13D
 JEB MS BALANCE 992G
 JDKG MS DESIGN BALANCER 933U

| | |
|--------|-----------|
| REG #: | 1601591 |
| BD: | 9/16/2023 |
| BW: | 66 |
| WW: | 591 |

| CE | BW | WW | YW | MK | TM | CEM | ST | DOC | CW | REA | MB | \$C | FPI | EPI | | |
|----------------------------------|-----|-----------|-----|----|--------|-----|---------------------|-----|----|-----|-----|-------|-------|--------|--|--|
| 15 | 0.1 | 74 | 120 | 20 | 57 | 8 | 12 | 11 | 57 | .91 | .37 | 92.22 | 84.56 | 143.12 | | |
| BREED PERCENTILE RANKING PER EPD | | | | | | | | | | | | | | | | |
| 25 | 65 | 45 | 35 | 80 | 70 | 30 | 85 | 75 | 10 | 3 | 50 | 85 | 40 | 25 | | |
| Breed % | | 69GV 31AN | | | OWNER: | | Duck River Gelbvieh | | | | | | | | | |

Balancer Homo Black Homo Polled **174**
TMMW Mr Derecho 130L

DBRG WHIRLWIND 735E
 VRT LAZY TV DERECHO J660
 VRT LAZY TV WINNIE G133

DJZ FINAL ANSWER 8E
 TMMW MISS FINAL ANSWER 116J
 TMMW GOVENORS MISS TRISTA 13Y

| | |
|--------|-----------|
| REG #: | 1591288 |
| BD: | 9/14/2023 |
| BW: | 72 |
| WW: | 622 |

| CE | BW | WW | YW | MK | TM | CEM | ST | DOC | CW | REA | MB | \$C | FPI | EPI | | |
|----------------------------------|-----|-----------|-----|----|--------|-----|------------------|-----|----|-----|-----|--------|-------|--------|--|--|
| 15 | 1.0 | 82 | 129 | 26 | 67 | 9 | 15 | 12 | 41 | .56 | .31 | 106.69 | 86.16 | 201.60 | | |
| BREED PERCENTILE RANKING PER EPD | | | | | | | | | | | | | | | | |
| 25 | 85 | 20 | 20 | 25 | 15 | 15 | 45 | 50 | 40 | 40 | 65 | 55 | 35 | 2 | | |
| Breed % | | 50GV 50AN | | | OWNER: | | Mulroy Farms LLC | | | | | | | | | |



BALANCER BULLS

Balancer Homo Black Homo Polled **178**
NGCC NG Cactus L91

BTBR SAGUARO 8111F ET
 TMGC SB CACTUS 52H
 TMGC SB BRIDGET 110D OF 2022/802U

NGCC LUCKY 063WC
 NGCC NG LOLA E891
 JOSH TRAVELER 890A

| | |
|--------|-----------|
| REG #: | 1581814 |
| BD: | 9/16/2023 |
| BW: | 90 |
| WW: | 528 |

| CE | BW | WW | YW | MK | TM | CEM | ST | DOC | CW | REA | MB | \$C | FPI | EPI |
|----------------------------------|---------------|----|--------|----|--------------------|-----|----|-----|----|-----|-----|--------|-------|--------|
| 9 | 1.5 | 72 | 117 | 25 | 61 | 6 | 16 | 13 | 54 | .87 | .35 | 112.81 | 79.81 | 132.40 |
| BREED PERCENTILE RANKING PER EPD | | | | | | | | | | | | | | |
| 95 | 90 | 55 | 45 | 35 | 45 | 65 | 30 | 30 | 10 | 4 | 55 | 40 | 65 | 35 |
| Breed % | 65GV 29AN 6XX | | OWNER: | | Narrow Gate Cattle | | | | | | | | | |

Balancer ND Red Polled **181**
BRNS 380L

RAB BIEBER HARD DRIVE Y120
 DBRG MR HARD DRIVE 0175H ET
 DBRG MS WINTHROP 330A

BWF BRANDYWINE ZULU 215Z
 BWF BRANDYWINE BODICIA 4147B
 BWF BRANDYWINE URANIA 8131U

| | |
|--------|-----------|
| REG #: | 1613505 |
| BD: | 9/18/2023 |
| BW: | 80 |
| WW: | 585 |

| CE | BW | WW | YW | MK | TM | CEM | ST | DOC | CW | REA | MB | \$C | FPI | EPI |
|----------------------------------|-----------|----|--------|----|----------------|-----|----|-----|-----|-----|-----|-------|-------|-------|
| 14 | -0.3 | 70 | 104 | 21 | 56 | 7 | 11 | 16 | 18 | .40 | .30 | 80.15 | 80.54 | 95.18 |
| BREED PERCENTILE RANKING PER EPD | | | | | | | | | | | | | | |
| 40 | 55 | 65 | 75 | 75 | 75 | 45 | 95 | 2 | >95 | 75 | 70 | 95 | 65 | 75 |
| Breed % | 75GV 25AR | | OWNER: | | Burns Gelbvieh | | | | | | | | | |

Balancer Homo Black Homo Polled **179**
JGPG Rebel Yell 3205L

JRI PROBITY 254D28
 TJB REBEL YELL 804F ET
 TJB ANISSA 921U ET

SEPT COPPERFIELD ET
 JGPG EMMA 758E
 EGL N449

| | |
|--------|-----------|
| REG #: | 1591754 |
| BD: | 9/17/2023 |
| BW: | 68 |
| WW: | 688 |

| CE | BW | WW | YW | MK | TM | CEM | ST | DOC | CW | REA | MB | \$C | FPI | EPI |
|----------------------------------|-----------|----|--------|----|--------------|-----|----|-----|----|-----|-----|--------|-------|--------|
| 13 | 0.3 | 65 | 101 | 22 | 54 | 7 | 19 | 15 | 40 | .41 | .50 | 128.52 | 79.49 | 126.32 |
| BREED PERCENTILE RANKING PER EPD | | | | | | | | | | | | | | |
| 50 | 70 | 80 | 80 | 65 | 85 | 45 | 5 | 5 | 40 | 75 | 25 | 15 | 70 | 40 |
| Breed % | 47GV 53AN | | OWNER: | | JGP Gelbvieh | | | | | | | | | |

Balancer Homo Black Homo Polled **182**
TMGC SB Lariat 280L

KHR 33A
 KCF BENNETT E158
 KCF MISS X593 B192

BARSTOW BANKROLL B73
 SB RITA 8187E
 CIRCLE A RITA 1422

| | |
|--------|-----------|
| REG #: | 1588054 |
| BD: | 9/19/2023 |
| BW: | 74 |
| WW: | 555 |

| CE | BW | WW | YW | MK | TM | CEM | ST | DOC | CW | REA | MB | \$C | FPI | EPI |
|----------------------------------|-----------|----|--------|----|---------------|-----|----|-----|----|-----|-----|-------|-------|--------|
| 13 | -0.5 | 76 | 128 | 29 | 68 | 8 | 11 | 14 | 48 | .85 | .30 | 86.45 | 84.56 | 149.35 |
| BREED PERCENTILE RANKING PER EPD | | | | | | | | | | | | | | |
| 50 | 50 | 40 | 20 | 10 | 15 | 30 | 95 | 15 | 20 | 5 | 70 | 90 | 40 | 20 |
| Breed % | 50GV 50AN | | OWNER: | | Stuecken Bros | | | | | | | | | |

Balancer Homo Black Homo Polled **180**
RUR Cactus Jack 12L

TMMW DESTINATION 82Y
 BTBR SAGUARO 8111F ET
 JEB BCC MISS OBJECTIVE 41W

SKF DUNN OPTIMUS 031B
 MTB BCC MISS OPTIMUS 12E
 MTB BCC MISS ARNOLD 39C

| | |
|--------|-----------|
| REG #: | 1592556 |
| BD: | 9/17/2023 |
| BW: | 62 |
| WW: | 613 |

| CE | BW | WW | YW | MK | TM | CEM | ST | DOC | CW | REA | MB | \$C | FPI | EPI |
|----------------------------------|-----------|----|--------|----|-----------------|-----|----|-----|----|-----|-----|--------|-------|-------|
| 16 | -3.1 | 67 | 95 | 19 | 53 | 11 | 20 | 11 | 33 | .43 | .77 | 138.48 | 91.39 | 90.64 |
| BREED PERCENTILE RANKING PER EPD | | | | | | | | | | | | | | |
| 15 | 10 | 75 | 90 | 85 | 85 | 3 | 3 | 75 | 65 | 70 | 2 | 5 | 15 | 80 |
| Breed % | 56GV 44AN | | OWNER: | | Rockin'-U-Ranch | | | | | | | | | |

Balancer Homo Black Homo Polled **183**
TMMW Mr Exponential 146L

K C F BENNETT EXPONENTIAL
 DBRG MR EXPONENTIAL 1158J
 DBRG MS EXCLUSIVE 5179C ET

DCH HILLE STOCK OPTIONS D410
 TMMW MISS STOCK OPTIONS 191J
 TMMW MISS MONTANA 255E

| | |
|--------|-----------|
| REG #: | 1591304 |
| BD: | 9/20/2023 |
| BW: | 64 |
| WW: | 651 |

| CE | BW | WW | YW | MK | TM | CEM | ST | DOC | CW | REA | MB | \$C | FPI | EPI |
|----------------------------------|-----------|----|--------|----|------------------|-----|----|-----|----|------|-----|--------|-------|--------|
| 16 | 1.1 | 92 | 150 | 24 | 71 | 8 | 15 | 12 | 55 | 1.04 | .56 | 115.03 | 99.05 | 168.33 |
| BREED PERCENTILE RANKING PER EPD | | | | | | | | | | | | | | |
| 15 | 85 | 3 | 3 | 45 | 5 | 30 | 45 | 50 | 10 | 1 | 15 | 35 | 3 | 10 |
| Breed % | 75GV 25AN | | OWNER: | | Mulroy Farms LLC | | | | | | | | | |



Balancer Homo Black Homo Polled **184**
TMMW Mr Overtime 151L

BTBR SAGUARO 8111F ET
 JEB BCC BLACK BALANCE J101 ET
 JEB BCC MISS OVERTIME 54C

TMMW HOLE IN ONE 93D
 TMMW MISS HOLE IN ONE 193G
 TMMW MISS KRUGER 125Z

| | |
|--------|-----------|
| REG #: | 1591309 |
| BD: | 9/22/2023 |
| BW: | 77 |
| WW: | 749 |

| CE | BW | WW | YW | MK | TM | CEM | ST | DOC | CW | REA | MB | \$C | FPI | EPI |
|----------------------------------|---------------|----|--------|----|------------------|-----|----|-----|----|-----|-----|--------|-------|--------|
| 12 | 0.4 | 85 | 133 | 26 | 68 | 8 | 17 | 13 | 31 | .57 | .23 | 124.20 | 85.76 | 151.82 |
| BREED PERCENTILE RANKING PER EPD | | | | | | | | | | | | | | |
| 65 | 70 | 10 | 15 | 25 | 15 | 30 | 20 | 30 | 70 | 40 | 85 | 20 | 35 | 20 |
| Breed % | 61GV 37AN 2AR | | OWNER: | | Mulroy Farms LLC | | | | | | | | | |

BALANCER BULLS

Balancer Black Homo Polled **185**

TMGC SB Legend 273L

G A R HIGH SECURITY JSF
IAND DUNN'S SAFE CRACKER 090J
SKF DUNNS MISS JACKPOT 572C

BTBR SAGUARO 8111F ET
TMGC SB VERBENA 156H
TMGC SB SILENCE 264E

| | |
|--------|-----------|
| REG #: | 1588047 |
| BD: | 9/23/2023 |
| BW: | 70 |
| WW: | 594 |

| CE | BW | WW | YW | MK | TM | CEM | ST | DOC | CW | REA | MB | \$C | FPI | EPI |
|----------------------------------|------|----|---------------|--------|----|---------------|----|-----|----|-----|-----|--------|-------|--------|
| 14 | -1.6 | 79 | 125 | 23 | 62 | 8 | 18 | 13 | 48 | .73 | .74 | 126.35 | 97.61 | 170.26 |
| BREED PERCENTILE RANKING PER EPD | | | | | | | | | | | | | | |
| 40 | 25 | 25 | 25 | 55 | 40 | 30 | 10 | 30 | 20 | 15 | 3 | 15 | 4 | 10 |
| Breed % | | | 56GV 41AN 3AR | OWNER: | | Stuecken Bros | | | | | | | | |



Balancer Homo Black Homo Polled **186**

TMMW Mr Bank Heist 158L

BRNS SKF BURNS BANK HEIST 874F
SKF DUNN'S BANK HEIST 231J
SKF DUNNS MISS ZANDER 6D67

DMP F185
TMMW MISS ALLIED 150J
TMMW MISS BISMARCK 84A

| | |
|--------|-----------|
| REG #: | 1591317 |
| BD: | 9/25/2023 |
| BW: | 80 |
| WW: | 705 |

| CE | BW | WW | YW | MK | TM | CEM | ST | DOC | CW | REA | MB | \$C | FPI | EPI |
|----------------------------------|-----|----|---------------|--------|----|------------------|----|-----|----|-----|-----|--------|-------|-------|
| 10 | 1.2 | 74 | 116 | 26 | 64 | 7 | 16 | 13 | 43 | .23 | .56 | 103.69 | 84.86 | 47.48 |
| BREED PERCENTILE RANKING PER EPD | | | | | | | | | | | | | | |
| 90 | 85 | 45 | 45 | 25 | 30 | 45 | 30 | 30 | 30 | 95 | 15 | 60 | 40 | >95 |
| Breed % | | | 48GV 48AN 4AR | OWNER: | | Mulroy Farms LLC | | | | | | | | |

Balancer Homo Black Homo Polled **189**

RDW 358L (DDC)

TMMW MR LEACHMAN SHIFT 141E
DJZ 61H
JEB BCC MISS BALANCE 54A
SKF DUNN OPTIMUS 031B
RDW 423D
RDW 198B

| | |
|--------|-----------|
| REG #: | 1594299 |
| BD: | 9/28/2023 |
| BW: | 58 |
| WW: | 626 |

| CE | BW | WW | YW | MK | TM | CEM | ST | DOC | CW | REA | MB | \$C | FPI | EPI |
|----------------------------------|------|----|-----------|--------|----|----------------|----|-----|----|-----|-----|--------|-------|--------|
| 20 | -1.9 | 68 | 107 | 32 | 66 | 10 | 18 | 12 | 29 | .53 | .62 | 124.31 | 90.62 | 171.99 |
| BREED PERCENTILE RANKING PER EPD | | | | | | | | | | | | | | |
| 1 | 20 | 70 | 65 | 2 | 20 | 10 | 10 | 50 | 80 | 50 | 10 | 20 | 20 | 10 |
| Breed % | | | 46GV 54AN | OWNER: | | Rex Wood Farms | | | | | | | | |

Balancer Black Homo Polled **187**

TMGC SB Cactus 193L

TMMW DESTINATION 82Y
BTBR SAGUARO 8111F ET
JEB BCC MISS OBJECTIVE 41W

CONNELLY IMPRESSION
TMGC SB IMPRESSION OF 61R 237E ET
TMGC 61R

| | |
|--------|-----------|
| REG #: | 1587974 |
| BD: | 9/26/2023 |
| BW: | 66 |
| WW: | 740 |

| CE | BW | WW | YW | MK | TM | CEM | ST | DOC | CW | REA | MB | \$C | FPI | EPI |
|----------------------------------|------|----|-----------|--------|----|---------------|----|-----|----|-----|-----|--------|-------|--------|
| 16 | -3.2 | 74 | 111 | 26 | 62 | 11 | 19 | 10 | 39 | .82 | .53 | 132.38 | 91.73 | 115.91 |
| BREED PERCENTILE RANKING PER EPD | | | | | | | | | | | | | | |
| 15 | 10 | 45 | 60 | 25 | 40 | 3 | 5 | 90 | 45 | 10 | 20 | 10 | 15 | 55 |
| Breed % | | | 56GV 44AN | OWNER: | | Stuecken Bros | | | | | | | | |

Balancer Homo Black Homo Polled **190**

TMGC SB Barcelona 240L

CCRO CAROLINA LEVERAGE 3214A
TMGC SB FORMULA 12E
TMGC SB DANIELLE 07C

TMGC SB SILENT NIGHTS 2005B
TMGC SB SILENCE 147F
TMGC SB MADONNA 259C

| | |
|--------|-----------|
| REG #: | 1588013 |
| BD: | 9/30/2023 |
| BW: | 81 |
| WW: | 679 |

| CE | BW | WW | YW | MK | TM | CEM | ST | DOC | CW | REA | MB | \$C | FPI | EPI |
|----------------------------------|-----|----|-----------|--------|----|---------------|-----|-----|----|-----|-----|-------|-------|--------|
| 14 | 0.1 | 81 | 126 | 22 | 63 | 9 | 10 | 13 | 37 | .91 | .69 | 87.12 | 96.03 | 193.05 |
| BREED PERCENTILE RANKING PER EPD | | | | | | | | | | | | | | |
| 40 | 65 | 20 | 25 | 65 | 35 | 15 | >95 | 30 | 50 | 3 | 5 | 90 | 10 | 3 |
| Breed % | | | 61GV 39AN | OWNER: | | Stuecken Bros | | | | | | | | |

Balancer Homo Black Homo Polled **188**

TMGC SB Legend 222L

G A R HIGH SECURITY JSF
IAND DUNN'S SAFE CRACKER 090J
SKF DUNNS MISS JACKPOT 572C

BTBR SAGUARO 8111F ET
TMGC SB VERBENA 154H
TMGC SB SILENCE 209E

| | |
|--------|-----------|
| REG #: | 1587996 |
| BD: | 9/26/2023 |
| BW: | 72 |
| WW: | 735 |

| CE | BW | WW | YW | MK | TM | CEM | ST | DOC | CW | REA | MB | \$C | FPI | EPI |
|----------------------------------|------|----|-----------|--------|----|---------------|----|-----|----|-----|-----|--------|-------|--------|
| 16 | -0.4 | 79 | 128 | 26 | 65 | 8 | 17 | 15 | 34 | .66 | .63 | 124.62 | 94.07 | 176.48 |
| BREED PERCENTILE RANKING PER EPD | | | | | | | | | | | | | | |
| 15 | 50 | 25 | 20 | 25 | 30 | 20 | 5 | 60 | 25 | 10 | 20 | 10 | 10 | 10 |
| Breed % | | | 53GV 47AN | OWNER: | | Stuecken Bros | | | | | | | | |

Balancer Homo Black Homo Polled **191**

TMMW Mr Exponential 176L

K C F BENNETT EXPONENTIAL
DBRG MR EXPONENTIAL 1158J
DBRG MS EXCLUSIVE 5179C ET

TMMW GRANITES MR CIM 50Y
TMMW MISS GRANITE 157A
TMMW KRUGERS MISS ERICA 261X

| | |
|--------|-----------|
| REG #: | 1591334 |
| BD: | 10/3/2023 |
| BW: | 76 |
| WW: | 662 |

| CE | BW | WW | YW | MK | TM | CEM | ST | DOC | CW | REA | MB | \$C | FPI | EPI |
|----------------------------------|------|----|-----------|--------|----|------------------|----|-----|----|-----|-----|--------|-------|--------|
| 15 | -0.9 | 74 | 112 | 23 | 61 | 9 | 17 | 14 | 40 | .67 | .51 | 114.84 | 87.79 | 111.74 |
| BREED PERCENTILE RANKING PER EPD | | | | | | | | | | | | | | |
| 25 | 40 | 45 | 55 | 55 | 45 | 15 | 20 | 15 | 40 | 20 | 20 | 35 | 30 | 60 |
| Breed % | | | 50GV 50AN | OWNER: | | Mulroy Farms LLC | | | | | | | | |

BALANCER BULLS



Balancer Homo Black Homo Polled **195**
LAW Mark 357L

DLW TPG JACKPOT 7551B ET
 BWF BRANDYWINE GUNNAR 942G
 BWF 208Z

ELLINGSON CHAPS 4095
 FHCC GEORGIA 0414
 FHCC GEORGIA 2503

| | |
|--------|------------|
| REG #: | 1583815 |
| BD: | 10/15/2023 |
| BW: | 85 |
| WW: | 676 |

| CE | BW | WW | YW | MK | TM | CEM | ST | DOC | CW | REA | MB | \$C | FPI | EPI | |
|----------------------------------|-----------|----|-----|----|--------|-----|----|-----|--------------|-----|-----|-----|-----|-------|--|
| 8 | 1.2 | 69 | 118 | 26 | 60 | 4 | 17 | 13 | 36 | .51 | .50 | | | 80.57 | |
| BREED PERCENTILE RANKING PER EPD | | | | | | | | | | | | | | | |
| >95 | 85 | 65 | 40 | 25 | 50 | 95 | 20 | 30 | 55 | 55 | 25 | | | 65 | |
| Breed % | 50GV 50AN | | | | OWNER: | | | | Lawman Farms | | | | | | |

Balancer Black Homo Polled **192**
TMMW Mr Exponential 181L

K C F BENNETT EXPONENTIAL
 DBRG MR EXPONENTIAL 1158J
 DBRG MS EXCLUSIVE 5179C ET

STG MR MEDINA 51Y14
 TMMW MISS MEDINA 127C
 TMMW MISS BISMARCH 151A

| | |
|--------|-----------|
| REG #: | 1591339 |
| BD: | 10/6/2023 |
| BW: | 76 |
| WW: | 746 |

| CE | BW | WW | YW | MK | TM | CEM | ST | DOC | CW | REA | MB | \$C | FPI | EPI | |
|----------------------------------|-----------|----|-----|----|--------|-----|----|-----|------------------|-----|-----|-------|-------|--------|--|
| 17 | -1.4 | 77 | 117 | 28 | 67 | 8 | 8 | 14 | 57 | .88 | .63 | 73.04 | 94.61 | 158.48 | |
| BREED PERCENTILE RANKING PER EPD | | | | | | | | | | | | | | | |
| 10 | 30 | 35 | 45 | 15 | 30 | >95 | 15 | 10 | 4 | 10 | >95 | 10 | 15 | | |
| Breed % | 50GV 50AN | | | | OWNER: | | | | Mulroy Farms LLC | | | | | | |

Balancer Black Homo Polled **196**
MTB BCC Black Balance 62L

CCRO CAROLINA LEVERAGE 3214A
 ERTL BARGAINING CHIP D677
 KCS BLACKBIRD 7707

TMMW DESTINATION 82Y
 MTB BCC MS DESTINATION 811F ET
 JEB BCC MISS OBJECTIVE 41W

| | |
|--------|------------|
| REG #: | 1593723 |
| BD: | 10/19/2023 |
| BW: | 72 |
| WW: | 516 |

| CE | BW | WW | YW | MK | TM | CEM | ST | DOC | CW | REA | MB | \$C | FPI | EPI | |
|----------------------------------|-----------|----|-----|----|--------|-----|----|-----|------------------------|------|-----|--------|-------|--------|--|
| 11 | 2.1 | 86 | 140 | 24 | 67 | 8 | 13 | 11 | 62 | 1.01 | .62 | 103.69 | 93.57 | 178.53 | |
| BREED PERCENTILE RANKING PER EPD | | | | | | | | | | | | | | | |
| 80 | 95 | 10 | 10 | 45 | 15 | 30 | 70 | 75 | 3 | 1 | 10 | 60 | 10 | 5 | |
| Breed % | 53GV 47AN | | | | OWNER: | | | | Burbank Cattle Company | | | | | | |

Balancer Homo Black Homo Polled **193**
JEB BCC Black Balance 49L

BTBR SAGUARO 8111F ET
 JEB BCC JACKSMITH J109 ET
 JEB BCC MISS OBJECTIVE 54C

SCHIEFELBEIN EFFECTIVE 61
 JGPG VELVET 7203E
 JGPG VELVET 5105C

| | |
|--------|-----------|
| REG #: | 1593710 |
| BD: | 10/8/2023 |
| BW: | 76 |
| WW: | 598 |

| CE | BW | WW | YW | MK | TM | CEM | ST | DOC | CW | REA | MB | \$C | FPI | EPI | |
|----------------------------------|---------------|----|-----|----|--------|-----|----|-----|------------------------|-----|-----|--------|-------|--------|--|
| 16 | -0.4 | 83 | 123 | 23 | 65 | 8 | 18 | 12 | 51 | .63 | .47 | 125.40 | 91.01 | 169.52 | |
| BREED PERCENTILE RANKING PER EPD | | | | | | | | | | | | | | | |
| 15 | 50 | 15 | 30 | 55 | 25 | 30 | 10 | 50 | 15 | 30 | 30 | 20 | 15 | 10 | |
| Breed % | 48GV 50AN 2AR | | | | OWNER: | | | | Burbank Cattle Company | | | | | | |

Balancer Homo Black Scurred **197**
TMGC SB Peterbilt 304L

JKGF PAYWEIGHT G63 ET
 SKF DUNN'S LAZY PAYWEIGHT 276J
 SKF DUNNS MS WATCHMAN 508C

GSRT DEACON 908D
 TMGC SB DIVINE 205H
 HUTR JUSTAMERE SANDI

| | |
|--------|------------|
| REG #: | 1588077 |
| BD: | 10/23/2023 |
| BW: | 67 |
| WW: | 675 |

| CE | BW | WW | YW | MK | TM | CEM | ST | DOC | CW | REA | MB | \$C | FPI | EPI | |
|----------------------------------|-----------|----|-----|----|--------|-----|----|-----|---------------|-----|-----|--------|-------|--------|--|
| 15 | -2.0 | 66 | 102 | 26 | 59 | 9 | 18 | 11 | 22 | .21 | .55 | 129.87 | 84.99 | 118.65 | |
| BREED PERCENTILE RANKING PER EPD | | | | | | | | | | | | | | | |
| 25 | 20 | 80 | 80 | 25 | 55 | 15 | 10 | 75 | 95 | 95 | 15 | 15 | 40 | 50 | |
| Breed % | 75GV 25AN | | | | OWNER: | | | | Stuecken Bros | | | | | | |

Balancer Black Homo Polled **194**
RDW 377L KML

BVC MR BALANCE 516E
 LSR FLINT HILLS 47H
 RLS FOCUS ON GOVERNOR 39Y

JRI PD RESOURCE 197E51
 RDW LADY LUCK 301C
 SWTZ MS QUEEN OF HEARTS 29NRT

| | |
|--------|------------|
| REG #: | 1594266 |
| BD: | 10/13/2023 |
| BW: | 68 |
| WW: | 665 |

| CE | BW | WW | YW | MK | TM | CEM | ST | DOC | CW | REA | MB | \$C | FPI | EPI | |
|----------------------------------|----------------|----|-----|----|--------|-----|----|-----|----------------|-----|-----|-------|-------|--------|--|
| 15 | -1.9 | 66 | 100 | 26 | 60 | 7 | 15 | 11 | 17 | .57 | .29 | 99.39 | 80.06 | 138.88 | |
| BREED PERCENTILE RANKING PER EPD | | | | | | | | | | | | | | | |
| 25 | 20 | 80 | 80 | 25 | 50 | 45 | 45 | 75 | >95 | 40 | 70 | 70 | 65 | 30 | |
| Breed % | 56GV 25AN 19AR | | | | OWNER: | | | | Rex Wood Farms | | | | | | |

Balancer ND Red Homo Polled **198**
JEB BCC Red Balance 69L

RAB BIBBER HARD DRIVE Y120
 GRU GOLDEN BOY 272G
 DCH HILLE C272

JEB BCC RED ZADE 31Z
 KDCM CKC MISS ZADE 149D
 JEB BCC MISS BALANCE 69A

| | |
|--------|------------|
| REG #: | 1593730 |
| BD: | 10/29/2023 |
| BW: | 72 |
| WW: | 636 |

| CE | BW | WW | YW | MK | TM | CEM | ST | DOC | CW | REA | MB | \$C | FPI | EPI | |
|----------------------------------|-----------|----|-----|----|--------|-----|----|-----|------------------------|-----|-----|--------|-------|-------|--|
| 10 | 2.4 | 74 | 122 | 29 | 66 | 7 | 17 | 14 | 23 | .47 | .44 | 119.73 | 82.83 | 83.19 | |
| BREED PERCENTILE RANKING PER EPD | | | | | | | | | | | | | | | |
| 90 | >95 | 45 | 30 | 10 | 20 | 45 | 20 | 15 | 90 | 60 | 35 | 25 | 50 | 85 | |
| Breed % | 62GV 38AR | | | | OWNER: | | | | Burbank Cattle Company | | | | | | |

Balancer Homo Black Homo Polled **199**
WNBE 327L

SYDGEN ENHANCE
 MSHP SMOKEYS MOONSHINER
 MTB BCC MISS BALANCE 46A

| | |
|--------|-----------|
| REG #: | 1582978 |
| BD: | 11/2/2023 |
| BW: | 88 |
| WW: | 685 |

KCF BENNETT QUALITY FOCUSED
 DCSF POST ROCK TWILA 173C8
 DCSF POST ROCK TWILA 49A2

| CE | BW | WW | YW | MK | TM | CEM | ST | DOC | CW | REA | MB | \$C | FPI | EPI |
|----------------------------------|-----------|----|-----|--------|----|--------------------|----|-----|----|-----|-----|-------|-------|--------|
| 10 | 1.4 | 96 | 152 | 25 | 74 | 5 | 13 | 15 | 60 | .57 | .55 | 96.66 | 97.62 | 167.84 |
| BREED PERCENTILE RANKING PER EPD | | | | | | | | | | | | | | |
| 90 | 90 | 1 | 2 | 35 | 2 | 80 | 70 | 5 | 4 | 40 | 15 | 75 | 4 | 10 |
| Breed % | 36GV 64AN | | | OWNER: | | Wannabe Stock Farm | | | | | | | | |

73% Gelbvieh Black Homo Polled **203**
CCFM 394L

TMGC SB FORMULA 12E
 TMGC SB DCN REVOLUTION 287G
 TMGC 213X

| | |
|--------|------------|
| REG #: | 1608352 |
| BD: | 10/12/2023 |
| BW: | 71 |
| WW: | 632 |

CTR SANDMAN 0103X
 CCFM 891F
 CCFM 353A

| CE | BW | WW | YW | MK | TM | CEM | ST | DOC | CW | REA | MB | \$C | FPI | EPI |
|----------------------------------|---------------|----|-----|--------|----|---------------------|----|-----|----|-----|-----|-----|-----|-------|
| 14 | 0.5 | 75 | 116 | 18 | 56 | 8 | 14 | 13 | 50 | .64 | .50 | | | 85.18 |
| BREED PERCENTILE RANKING PER EPD | | | | | | | | | | | | | | |
| 35 | 70 | 35 | 35 | 90 | 70 | 25 | 60 | 25 | 10 | 35 | 20 | | | 30 |
| Breed % | 73GV 24AN 3XX | | | OWNER: | | Chapuis Cattle Farm | | | | | | | | |

Balancer Homo Black Homo Polled **200**
JEB BCC Black Balance 73L

CCRO CAROLINA LEVERAGE 3214A
 ERTL BARGAINING CHIP D677
 KCS BLACKBIRD 7707

| | |
|--------|-----------|
| REG #: | 1593734 |
| BD: | 11/3/2023 |
| BW: | 76 |
| WW: | 690 |

BNG OVERTIME 23Y
 JEB BCC MISS OVERTIME 23C
 CJSJ LUCILLE 1367Y ET

| CE | BW | WW | YW | MK | TM | CEM | ST | DOC | CW | REA | MB | \$C | FPI | EPI |
|----------------------------------|-----------|----|-----|--------|----|------------------------|----|-----|----|-----|-----|--------|-------|--------|
| 10 | 2.4 | 87 | 131 | 27 | 70 | 5 | 19 | 14 | 48 | .84 | .46 | 130.97 | 89.83 | 172.03 |
| BREED PERCENTILE RANKING PER EPD | | | | | | | | | | | | | | |
| 90 | >95 | 10 | 20 | 20 | 10 | 80 | 5 | 15 | 20 | 5 | 30 | 10 | 20 | 10 |
| Breed % | 47GV 53AN | | | OWNER: | | Burbank Cattle Company | | | | | | | | |

77% Gelbvieh Homo Black Homo Polled **204**
TMGC SB Barcelona 228L

CCRO CAROLINA LEVERAGE 3214A
 TMGC SB FORMULA 12E
 TMGC SB DANIELLE 07C

| | |
|--------|-----------|
| REG #: | 1588001 |
| BD: | 9/10/2023 |
| BW: | 81 |
| WW: | 583 |

JRI PROBITY 254D28
 TMGC SB PROBITY QUEEN 261G
 TMGC SB JACKPOT QUEEN 211E

| CE | BW | WW | YW | MK | TM | CEM | ST | DOC | CW | REA | MB | \$C | FPI | EPI |
|----------------------------------|-----------|----|-----|--------|----|---------------|----|-----|----|-----|-----|--------|-------|--------|
| 14 | 0.3 | 97 | 148 | 20 | 69 | 8 | 13 | 12 | 57 | .85 | .34 | 103.22 | 95.08 | 187.30 |
| BREED PERCENTILE RANKING PER EPD | | | | | | | | | | | | | | |
| 35 | 65 | 1 | 2 | 80 | 10 | 25 | 75 | 50 | 4 | 10 | 45 | 70 | 5 | 3 |
| Breed % | 77GV 23AN | | | OWNER: | | Stuecken Bros | | | | | | | | |

Balancer Homo Black Homo Polled **201**
JEB BCC Black Balance 79L

CCRO CAROLINA LEVERAGE 3214A
 ERTL BARGAINING CHIP D677
 KCS BLACKBIRD 7707

| | |
|--------|-----------|
| REG #: | 1593740 |
| BD: | 11/7/2023 |
| BW: | 74 |
| WW: | 669 |

TMMW DESTINATION 82Y
 MTB BCC MS DESTINATION 501E ET
 JEB BCC MISS OBJECTIVE 41W

| CE | BW | WW | YW | MK | TM | CEM | ST | DOC | CW | REA | MB | \$C | FPI | EPI |
|----------------------------------|-----------|----|-----|--------|----|------------------------|----|-----|----|-----|-----|--------|-------|--------|
| 14 | -0.7 | 75 | 119 | 27 | 65 | 9 | 16 | 13 | 44 | .58 | .62 | 119.61 | 90.76 | 143.57 |
| BREED PERCENTILE RANKING PER EPD | | | | | | | | | | | | | | |
| 40 | 45 | 40 | 40 | 20 | 25 | 15 | 30 | 30 | 30 | 40 | 10 | 25 | 20 | 25 |
| Breed % | 53GV 47AN | | | OWNER: | | Burbank Cattle Company | | | | | | | | |

77% Gelbvieh ND Red Polled **205**
DRGF 356L

GGRR GILLY'S BERT F847
 SFGC MR HAWK 144J
 SFGC MS SECRET HAWK 844F

| | |
|--------|-----------|
| REG #: | 1601560 |
| BD: | 9/27/2023 |
| BW: | 76 |
| WW: | 699 |

CJSJ 1860B
 NNR 33 RED ROCK
 NNR POST BLACK FACE 36A

| CE | BW | WW | YW | MK | TM | CEM | ST | DOC | CW | REA | MB | \$C | FPI | EPI |
|----------------------------------|---------------|----|-----|--------|----|---------------------|----|-----|----|-----|-----|--------|-------|--------|
| 12 | 2.1 | 76 | 118 | 22 | 60 | 5 | 17 | 13 | 50 | .79 | .19 | 117.19 | 76.60 | 137.37 |
| BREED PERCENTILE RANKING PER EPD | | | | | | | | | | | | | | |
| 65 | 95 | 35 | 35 | 60 | 45 | 80 | 20 | 25 | 10 | 15 | 80 | 40 | 70 | 20 |
| Breed % | 77GV 17AN 6AR | | | OWNER: | | Duck River Gelbvieh | | | | | | | | |

50% Gelbvieh Black Homo Polled **202**
DRGF 347L

DCH HILLE DAKOTA CRUSADER C337
 SKF DUNN'S HEAVY CRUSADE 102F
 SKF DUNN'S MISS QUIVIRA 081X

| | |
|--------|-----------|
| REG #: | 1601592 |
| BD: | 9/18/2023 |
| BW: | 76 |
| WW: | 592 |

DRGF W1

| CE | BW | WW | YW | MK | TM | CEM | ST | DOC | CW | REA | MB | \$C | FPI | EPI |
|----------------------------------|-----------|----|-----|--------|----|---------------------|----|-----|----|------|-----|-----|-----|-------|
| 12 | 0.4 | 70 | 109 | 31 | 66 | 7 | 12 | 14 | 56 | 1.15 | .24 | | | 77.67 |
| BREED PERCENTILE RANKING PER EPD | | | | | | | | | | | | | | |
| 65 | 65 | 60 | 55 | 2 | 15 | 45 | 85 | 15 | 5 | 1 | 70 | | | 65 |
| Breed % | 50GV 50XX | | | OWNER: | | Duck River Gelbvieh | | | | | | | | |

81% Gelbvieh Homo Black Homo Polled **206**
KZC L164

SPFR 204Z
 KZC E71
 ABF 2207Z

| | |
|--------|----------|
| REG #: | 1612235 |
| BD: | 8/8/2023 |
| BW: | 82 |
| WW: | 601 |

RLS REGULAR STANDARD 321A ET
 KZC D141
 JRI MS ASHLEY 270L513

| CE | BW | WW | YW | MK | TM | CEM | ST | DOC | CW | REA | MB | \$C | FPI | EPI |
|----------------------------------|-----------|----|----|--------|----|-------------------|-----|-----|----|-----|-----|-------|-------|--------|
| 12 | 0.4 | 68 | 94 | 26 | 60 | 6 | 9 | 16 | 27 | .63 | .21 | 66.41 | 74.71 | 115.94 |
| BREED PERCENTILE RANKING PER EPD | | | | | | | | | | | | | | |
| 65 | 65 | 65 | 85 | 25 | 45 | 60 | >95 | 2 | 75 | 35 | 75 | >95 | 80 | 40 |
| Breed % | 81GV 19AN | | | OWNER: | | KZ Cattle Company | | | | | | | | |

About Gelbvieh Bulls

Each of the Gelbvieh bulls is listed separately in the catalog with their own individual performance and pedigree information. They are all registered with the American Gelbvieh Association. The EPD's are the most current provided by the Gelbvieh Assoc.

The Average EPD's for Gelbvieh bulls as of 1/14/25:
 CE:13 BW: 0.0 WW: 71 YW: 105 MK: 23 TM: 58
 CEM: 7 ST: 16 DOC: 12 CW: 29 REA: 0.66
 MB: 0.22 \$C: 116.56 FPI: 77.24 EPI: 84.63

PB Gelbvieh Homo Black Homo Polled **210**

GMF 350L
 CCRO CAROLINA LEVERAGE 3214A
 WAHL 004H ET
 FHG FLYING H MS LEGACY 48Y
 CTR JACKPOT 6C ET
 GMF MENG 810F
 GMF MENG 211Z

| | |
|--------|-----------|
| REG #: | 1585491 |
| BD: | 8/12/2023 |
| BW: | 82 |
| WW: | 620 |

| CE | BW | WW | YW | MK | TM | CEM | ST | DOC | CW | REA | MB | \$C | FPI | EPI | |
|------------------------------------|------|----------|----|----|--------|-----|----|-----|----|---------------------------|----|--------|-------|-------|--|
| 13 | -1.5 | 66 | 99 | 31 | 64 | 10 | 18 | 9 | 44 | 92 | 27 | 132.52 | 78.51 | 81.85 | |
| 13BREED PERCENTILE RANKING PER EPD | | | | | | | | | | | | | | | |
| 45 | 20 | 70 | 65 | 2 | 20 | 3 | 20 | 95 | 10 | 10 | 35 | 25 | 45 | 55 | |
| Breed % | | 94GV 6AN | | | OWNER: | | | | | Meng Farms Cattle Company | | | | | |

PB Gelbvieh Homo Black Homo Polled **207**

SKF Dunn's Exclusive Destiny 045L ET
 TMMW DESTINATION 82Y
 SKF DUNN'S DESTINY 056F
 SKF DUNN'S MS GOVENORESS 5C28
 FHG FLYING H EXCLUSIVE
 SKF DUNN'S MISS EXCLUSIVE 756E ET
 SKF DUNN'S MISS SANDY 166Y

| | |
|--------|----------|
| REG #: | 1574155 |
| BD: | 2/1/2023 |
| BW: | ET |
| WW: | ET |

| CE | BW | WW | YW | MK | TM | CEM | ST | DOC | CW | REA | MB | \$C | FPI | EPI | |
|----------------------------------|-----|----------|-----|----|--------|-----|----|-----|----|------------------|-----|--------|-------|--------|--|
| 14 | 1.2 | 72 | 118 | 22 | 58 | 11 | 22 | 9 | 26 | .50 | .85 | 171.61 | 92.86 | 144.36 | |
| BREED PERCENTILE RANKING PER EPD | | | | | | | | | | | | | | | |
| 30 | 80 | 45 | 20 | 60 | 55 | 1 | 1 | 95 | 65 | 85 | 1 | 1 | 2 | 3 | |
| Breed % | | 94GV 6AN | | | OWNER: | | | | | Sandy Knoll Farm | | | | | |

PB Gelbvieh Black Homo Polled **211**

CCFM 363L
 TMGC SB FORMULA 12E
 TMGC SB DCN REVOLUTION 287G
 TMGC 213X
 RWG ZENO 250Z
 CCFM 518C
 CCFM 303A

| | |
|--------|-----------|
| REG #: | 1608347 |
| BD: | 8/25/2023 |
| BW: | 76 |
| WW: | 591 |

| CE | BW | WW | YW | MK | TM | CEM | ST | DOC | CW | REA | MB | \$C | FPI | EPI | |
|----------------------------------|------|--------------|----|----|--------|-----|----|-----|----|---------------------|-----|--------|-------|--------|--|
| 16 | -1.5 | 64 | 94 | 22 | 54 | 10 | 15 | 12 | 33 | .68 | .63 | 111.34 | 85.95 | 101.07 | |
| BREED PERCENTILE RANKING PER EPD | | | | | | | | | | | | | | | |
| 10 | 20 | 80 | 80 | 60 | 75 | 3 | 60 | 45 | 35 | 45 | 1 | 65 | 15 | 30 | |
| Breed % | | 85GV 9AN 6XX | | | OWNER: | | | | | Chapuis Cattle Farm | | | | | |

PB Gelbvieh Black Polled **208**

LAW Zia Business 325L
 TMGC SB GOOD BUSINESS 143B
 SKF DUNN'S REGULAR BUSINESS 149F
 SKF DUNNS MISS GOVENOR 136Y
 KCF BENNETT S30
 BWF BRANDYWINE ZIA 236Z
 BWF BRANDYWINE URANIA 894U

| | |
|--------|-----------|
| REG #: | 1583649 |
| BD: | 7/15/2023 |
| BW: | 70 |
| WW: | 576 |

| CE | BW | WW | YW | MK | TM | CEM | ST | DOC | CW | REA | MB | \$C | FPI | EPI | |
|----------------------------------|-----|--------|----|----|--------|-----|----|-----|----|--------------|-----|--------|-------|-------|--|
| 11 | 0.7 | 66 | 98 | 23 | 56 | 7 | 14 | 12 | 21 | .36 | .28 | 104.45 | 74.67 | 36.34 | |
| BREED PERCENTILE RANKING PER EPD | | | | | | | | | | | | | | | |
| 75 | 65 | 70 | 70 | 50 | 35 | 70 | 45 | 80 | 95 | 35 | 80 | 65 | 95 | | |
| Breed % | | 99.9GV | | | OWNER: | | | | | Lawman Farms | | | | | |

PB Gelbvieh Homo Black Homo Polled **212**

DRGF 323L
 DDGR RESILIENT 275D
 GMF 034H
 GMF MENG 57C
 DMP D610
 DRGF 813F
 JEB DR BCC MISS BALANCE 201C

| | |
|--------|----------|
| REG #: | 1601581 |
| BD: | 9/8/2023 |
| BW: | 69 |
| WW: | 653 |

| CE | BW | WW | YW | MK | TM | CEM | ST | DOC | CW | REA | MB | \$C | FPI | EPI | |
|----------------------------------|-----|----------|-----|----|--------|-----|----|-----|----|---------------------|-----|--------|-------|--------|--|
| 11 | 0.3 | 86 | 139 | 26 | 69 | 7 | 20 | 14 | 29 | .61 | .31 | 137.00 | 89.38 | 128.01 | |
| BREED PERCENTILE RANKING PER EPD | | | | | | | | | | | | | | | |
| 75 | 55 | 4 | 2 | 25 | 4 | 35 | 4 | 10 | 50 | 65 | 25 | 15 | 4 | 10 | |
| Breed % | | 94GV 6AN | | | OWNER: | | | | | Duck River Gelbvieh | | | | | |

PB Gelbvieh Homo Black Homo Polled **209**

GMF 326L
 CCRO CAROLINA LEVERAGE 3214A
 WAHL 004H ET
 FHG FLYING H MS LEGACY 48Y
 CTR HIGHLIGHT 066K
 GMF MENG 26Z
 GMF MENG 934W

| | |
|--------|-----------|
| REG #: | 1585486 |
| BD: | 7/26/2023 |
| BW: | 88 |
| WW: | 675 |

| CE | BW | WW | YW | MK | TM | CEM | ST | DOC | CW | REA | MB | \$C | FPI | EPI | |
|----------------------------------|-----|----------|-----|----|--------|-----|----|-----|----|---------------------------|-----|--------|-------|-------|--|
| 9 | 0.0 | 74 | 109 | 32 | 69 | 5 | 21 | 9 | 26 | .23 | .58 | 149.23 | 87.04 | 75.09 | |
| BREED PERCENTILE RANKING PER EPD | | | | | | | | | | | | | | | |
| 95 | 50 | 35 | 40 | 1 | 4 | 75 | 2 | 95 | 65 | >95 | 2 | 5 | 10 | 65 | |
| Breed % | | 94GV 6AN | | | OWNER: | | | | | Meng Farms Cattle Company | | | | | |

PB Gelbvieh Black Homo Polled **213**

GATS Gatson Stk Opt Linguistics 329L
 CCRO CAROLINA LEVERAGE 3214A
 DCH HILLE STOCK OPTIONS D410
 DCH HILLE B189 ET
 JNCC DIRECT DRIVE 590C
 GAT GATSON DIRECT DR FRED A 807F
 GATS GATSON ANCHORAGE DARLA 626D

| | |
|--------|-----------|
| REG #: | 1578684 |
| BD: | 9/11/2023 |
| BW: | 73 |
| WW: | 557 |

| CE | BW | WW | YW | MK | TM | CEM | ST | DOC | CW | REA | MB | \$C | FPI | EPI | |
|----------------------------------|------|-----------|-----|----|--------|-----|----|-----|----|-----------------|-----|--------|-------|--------|--|
| 17 | -2.4 | 80 | 115 | 23 | 62 | 10 | 20 | 14 | 38 | .50 | .30 | 146.55 | 88.07 | 118.99 | |
| BREED PERCENTILE RANKING PER EPD | | | | | | | | | | | | | | | |
| 5 | 10 | 15 | 25 | 50 | 30 | 3 | 4 | 10 | 20 | 85 | 30 | 10 | 10 | 15 | |
| Breed % | | 88GV 12AN | | | OWNER: | | | | | Gatson Gelbvieh | | | | | |

GELBVIEH BULLS

PB Gelbvieh Black Homo Polled **214**
GMF 366L ET

CCRO CAROLINA LEVERAGE 3214A
 JKGf CHIEF JUSTICE C205
 KCF MISS FORTUNE U490
 MCCA CORNHUSKER RED 524C
 MCCA FEBE 815F
 MCCA BEBE 41015B

| | |
|--------|-----------|
| REG #: | 1593401 |
| BD: | 9/13/2023 |
| BW: | ET |
| WW: | ET |

| CE | BW | WW | YW | MK | TM | CEM | ST | DOC | CW | REA | MB | \$C | FPI | EPI |
|----------------------------------|----------|----|--------|----|---------------------------|-----|----|-----|----|-----|-----|-----|-------|-----|
| 17 | -1.8 | 72 | 107 | 24 | 60 | 10 | 19 | 9 | 26 | .57 | .67 | | 92.98 | |
| BREED PERCENTILE RANKING PER EPD | | | | | | | | | | | | | | |
| 5 | 15 | 45 | 45 | 40 | 40 | 3 | 10 | 95 | 65 | 70 | 1 | | 2 | |
| Breed % | 94GV 6AN | | OWNER: | | Meng Farms Cattle Company | | | | | | | | | |

PB Gelbvieh Homo Black Homo Polled **218**
TMMW Mr Stock Options 199L

CCRO CAROLINA LEVERAGE 3214A
 DCH HILLE STOCK OPTIONS D410
 DCH HILLE B189 ET
 TMMW HOLE IN ONE 93D
 TMMW MISS HOLE IN ONE 101H1
 TMMW MISS MEDINA 32C

| | |
|--------|------------|
| REG #: | 1591360 |
| BD: | 10/30/2023 |
| BW: | 73 |
| WW: | 698 |

| CE | BW | WW | YW | MK | TM | CEM | ST | DOC | CW | REA | MB | \$C | FPI | EPI |
|----------------------------------|-----------|----|--------|----|------------------|-----|----|-----|----|-----|-----|--------|-------|--------|
| 12 | 0.9 | 95 | 147 | 27 | 75 | 7 | 16 | 16 | 41 | 95 | .06 | 127.88 | 87.79 | 170.37 |
| BREED PERCENTILE RANKING PER EPD | | | | | | | | | | | | | | |
| 60 | 70 | 1 | 1 | 15 | 1 | 35 | 45 | 2 | 10 | 5 | 90 | 30 | 10 | 1 |
| Breed % | 85GV 15AN | | OWNER: | | Mulroy Farms LLC | | | | | | | | | |

PB Gelbvieh Homo Black Scurred **215**
DRGF 335L

DDGR RESILIENT 275D
 GMF 034H
 GMF MENG 57C
 ZJC HOSS 30W ET
 DRGF 245Z
 GPE MISS EXCEPTIONAL 5L

| | |
|--------|-----------|
| REG #: | 1601555 |
| BD: | 9/15/2023 |
| BW: | 68 |
| WW: | 650 |

| CE | BW | WW | YW | MK | TM | CEM | ST | DOC | CW | REA | MB | \$C | FPI | EPI |
|----------------------------------|-----------|----|--------|----|---------------------|-----|----|-----|----|-----|-----|--------|-------|--------|
| 16 | -0.8 | 75 | 115 | 27 | 65 | 8 | 16 | 15 | 32 | .71 | .38 | 110.16 | 86.44 | 109.56 |
| BREED PERCENTILE RANKING PER EPD | | | | | | | | | | | | | | |
| 10 | 30 | 30 | 25 | 15 | 15 | 20 | 45 | 4 | 35 | 40 | 15 | 70 | 10 | 25 |
| Breed % | 88GV 12AN | | OWNER: | | Duck River Gelbvieh | | | | | | | | | |

PB Gelbvieh Homo Black Homo Polled **219**
TMMW Mr Stock Options 206L

CCRO CAROLINA LEVERAGE 3214A
 DCH HILLE STOCK OPTIONS D410
 DCH HILLE B189 ET
 TMMW GOVENORS MR EXTRA 6018W
 TMMW MISS GOVENOR 148A
 OZZ 36T

| | |
|--------|-----------|
| REG #: | 1591367 |
| BD: | 11/6/2023 |
| BW: | 74 |
| WW: | 820 |

| CE | BW | WW | YW | MK | TM | CEM | ST | DOC | CW | REA | MB | \$C | FPI | EPI |
|----------------------------------|----------|----|--------|----|------------------|-----|----|-----|----|-----|-----|--------|-------|--------|
| 13 | 0.9 | 90 | 129 | 23 | 68 | 8 | 18 | 14 | 32 | 97 | .20 | 135.50 | 87.33 | 118.70 |
| BREED PERCENTILE RANKING PER EPD | | | | | | | | | | | | | | |
| 45 | 70 | 2 | 10 | 50 | 10 | 20 | 20 | 10 | 35 | 4 | 55 | 20 | 10 | 15 |
| Breed % | 91GV 9AN | | OWNER: | | Mulroy Farms LLC | | | | | | | | | |

PB Gelbvieh Homo Black Homo Polled **216**
LAW Ziw's Gunnar 344L

DLW TPG JACKPOT 7551B ET
 BWF BRANDYWINE GUNNAR 942G
 BWF 208Z
 WNBE 447B
 WNBE ZIWANEE 831F
 JEB ZINIA 400Z ET

| | |
|--------|-----------|
| REG #: | 1582396 |
| BD: | 9/16/2023 |
| BW: | 88 |
| WW: | 755 |

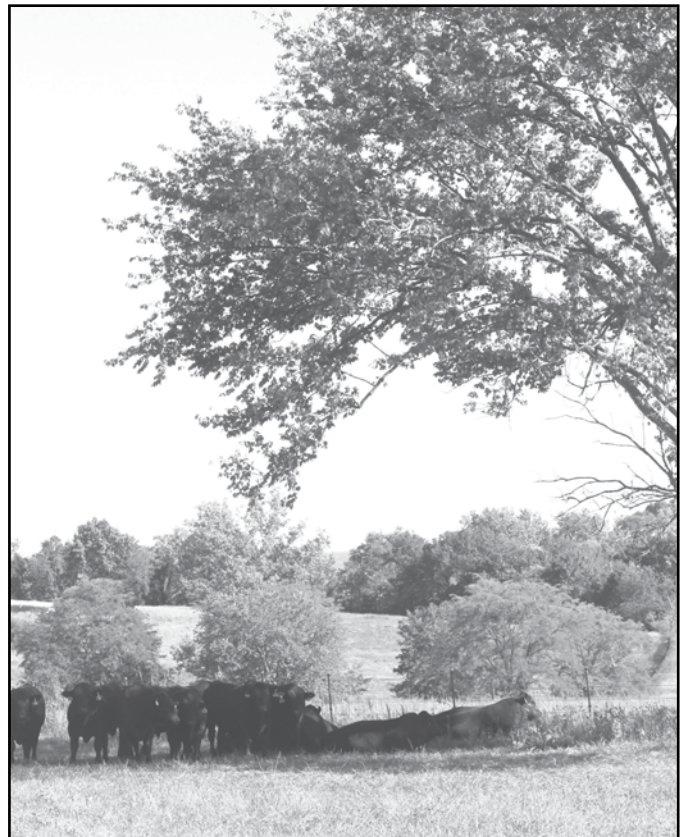
| CE | BW | WW | YW | MK | TM | CEM | ST | DOC | CW | REA | MB | \$C | FPI | EPI |
|----------------------------------|----------|----|--------|----|--------------|-----|----|-----|----|-----|-----|--------|-------|-------|
| 8 | 2.0 | 79 | 130 | 25 | 65 | 4 | 15 | 13 | 37 | .65 | .38 | 109.06 | 83.44 | 93.40 |
| BREED PERCENTILE RANKING PER EPD | | | | | | | | | | | | | | |
| >95 | 90 | 20 | 5 | 30 | 15 | 90 | 60 | 25 | 20 | 55 | 15 | 70 | 20 | 40 |
| Breed % | 91GV 9AN | | OWNER: | | Lawman Farms | | | | | | | | | |

PB Gelbvieh ND Red Homo Polled **217**
JEB BCC Red Landon 64L

BNC AT EASE A357
 BNW PLAINSMAN JUBAL 1104J
 BNW DESERT ROSE 9001G
 JEB BCC RED ZADE 31Z
 KDCM MISS ZADE 117D
 MTB BCC MO PROSPECT 5X

| | |
|--------|------------|
| REG #: | 1593725 |
| BD: | 10/21/2023 |
| BW: | 74 |
| WW: | 649 |

| CE | BW | WW | YW | MK | TM | CEM | ST | DOC | CW | REA | MB | \$C | FPI | EPI |
|----------------------------------|--------------|----|--------|----|------------------------|-----|----|-----|----|-----|-----|--------|-------|-------|
| 14 | 1.0 | 79 | 124 | 33 | 72 | 9 | 21 | 7 | 37 | .61 | .54 | 141.67 | 90.32 | 76.76 |
| BREED PERCENTILE RANKING PER EPD | | | | | | | | | | | | | | |
| 30 | 75 | 20 | 10 | 1 | 2 | 10 | 2 | >95 | 20 | 65 | 3 | 10 | 4 | 60 |
| Breed % | 93GV SAR 2AN | | OWNER: | | Burbank Cattle Company | | | | | | | | | |



Additional Bulls Selling:

This will be the fifth year of having the Brangus offering from Southern Arkansas University. These bulls come from the University Beef Farm's registered Brangus herd. They have been developed at the University farm with the involvement of students in a teaching environment.

Seedstock Plus is pleased to help the University market these registered Brangus bulls. There will be videos available on these bulls. They were semen checked and trich tested as well. They sell under the same terms and conditions as the Seedstock Plus bulls.

About Brangus Bulls

Registered Brangus bulls are 3/8 Brahman/Zebu and 5/8 Angus. The Foundation parents from both breeds must be registered and recorded with IBBA. The Brangus bull is a popular choice with commercial producers - especially those in an adverse environment as the Brahman influence excels in disease and pest resistance as well as heat tolerance.

The average EPD's for Brangus bulls as of 1/18/2025 are:

CE: 5.00 BW: 0.35 WW: 20 YW: 40 Milk: 8.5 TM: 19
CEM: 3.5 ST: 1.8 REA: 0.21 IMF: 0.08 Fat: 0.005 Term: 1.83 Fert: 3.85

Additional EPD Definitions (the rest are on page 3 About the Catalog):

IMF: Intra-muscular fat - expressed as a fraction of the difference in marbling score compared to other sires.

Fat: expressed in inches and is a predictor of differences in external fat

Terminal Index: a blended EPD combining traits for positive carcass value.

Fertility Index: a blended EPD combining traits for maternal characteristics including WW, Milk, Stayability, HF Preg & Mature Cow Weight.

Brangus

SAU 311L

HENDERSON OF BRINKS 3057
SCC ROBERT'S PASSPORT 409U3
SUNNY SHAQ 409/3

001C TRINITY
SAU 604K
SAU 002C

| | |
|--------|----------|
| REG #: | 10524006 |
| BD: | 2/8/2023 |
| BW: | 71 |
| WW: | 604 |

| CE | BW | WW | YW | MK | TM | CEM | ST | REA | IMF | FAT | TERM | FERT |
|----------------------------------|-------|--------|----|------------------------------|----|------|-----|-----|-----|-------|------|------|
| 5.5 | -0.3 | 15 | 29 | 15 | 23 | 3.94 | .57 | .09 | .04 | -.002 | 1.38 | 3.07 |
| BREED PERCENTILE RANKING PER EPD | | | | | | | | | | | | |
| 50 | 35 | 70 | 80 | 10 | 30 | 35 | 95 | 75 | 60 | 30 | 70 | 80 |
| Breed % | 100BN | OWNER: | | Southern Arkansas University | | | | | | | | |



Brangus

SAU 318L

SUHN'S MAJESTIK BEACON 30C
SAU 008H
SAU 604K
DMR ELDORADO 30815
SAU 902G
SAU 905B

| | |
|--------|-----------|
| REG #: | 10524013 |
| BD: | 2/19/2023 |
| BW: | 73 |
| WW: | 531 |

| CE | BW | WW | YW | MK | TM | CEM | ST | REA | IMF | FAT | TERM | FERT |
|----------------------------------|-------|--------|----|------------------------------|-----|------|------|-----|-----|------|------|------|
| 8 | -1.3 | 10 | 27 | 2 | 8 | 3.39 | 1.93 | .11 | .04 | .002 | 1.19 | 3.79 |
| BREED PERCENTILE RANKING PER EPD | | | | | | | | | | | | |
| 15 | 20 | 85 | 80 | 95 | >95 | 60 | 50 | 70 | 60 | 45 | 75 | 55 |
| Breed % | 100BN | OWNER: | | Southern Arkansas University | | | | | | | | |

Brangus

SAU 319L

SUHN'S MAJESTIK BEACON 30C
SAU 008H
SAU 604K
DMR LOUISIANA PURCHASE 924D10
SAU 127J
SAU 905G

| | |
|--------|-----------|
| REG #: | 10524014 |
| BD: | 2/19/2023 |
| BW: | 66 |
| WW: | 594 |

| CE | BW | WW | YW | MK | TM | CEM | ST | REA | IMF | FAT | TERM | FERT |
|----------------------------------|-------|--------|----|------------------------------|----|------|------|-----|------|------|------|------|
| 8.2 | -1.7 | 11 | 26 | 7 | 13 | 3.38 | 2.45 | .16 | -.02 | .005 | 1.1 | 4.27 |
| BREED PERCENTILE RANKING PER EPD | | | | | | | | | | | | |
| 15 | 15 | 85 | 85 | 70 | 85 | 60 | 35 | 60 | 80 | 50 | 80 | 35 |
| Breed % | 100BN | OWNER: | | Southern Arkansas University | | | | | | | | |

Brangus

SAU 320L

SUHN'S MAJESTIK BEACON 30C
SAU 008H
SAU 604K
001C TRINITY
SAU 014H
SAU 008C

| | |
|--------|-----------|
| REG #: | 10524015 |
| BD: | 2/22/2023 |
| BW: | 77 |
| WW: | 634 |

| CE | BW | WW | YW | MK | TM | CEM | ST | REA | IMF | FAT | TERM | FERT |
|----------------------------------|-------|--------|----|------------------------------|----|------|------|-----|------|------|------|------|
| 5.7 | -0.1 | 13 | 36 | 13 | 20 | 3.61 | 1.49 | .14 | -.01 | .003 | 1.5 | 3.48 |
| BREED PERCENTILE RANKING PER EPD | | | | | | | | | | | | |
| 45 | 45 | 80 | 60 | 15 | 45 | 50 | 65 | 65 | 75 | 45 | 65 | 65 |
| Breed % | 100BN | OWNER: | | Southern Arkansas University | | | | | | | | |

Brangus

SAU 321L

DMR THE CHAIRMAN 415A11
SAU 724L
SAU 510J
001C TRINITY
SAU 613K
SAU 937B

| | |
|--------|-----------|
| REG #: | 10524016 |
| BD: | 2/23/2023 |
| BW: | 71 |
| WW: | 561 |

| CE | BW | WW | YW | MK | TM | CEM | ST | REA | IMF | FAT | TERM | FERT |
|----------------------------------|-------|--------|----|------------------------------|----|------|------|-----|-----|------|------|------|
| 7.4 | -1.3 | -1 | 16 | 16 | 16 | 3.13 | 1.06 | .08 | .02 | .000 | .84 | 3.46 |
| BREED PERCENTILE RANKING PER EPD | | | | | | | | | | | | |
| 20 | 20 | >95 | 95 | 5 | 70 | 70 | 80 | 75 | 70 | 35 | 90 | 65 |
| Breed % | 100BN | OWNER: | | Southern Arkansas University | | | | | | | | |

221

223

220

223

224

BRANGUS BULLS

Brangus

SAU 323L

TJM MAIN EVENT 59C10
SAU 805M
SAU 008C

JBM GRIESE 65B2
SAU 923G
SAU 417H

225

| | |
|--------|-----------|
| REG #: | 10524018 |
| BD: | 2/24/2023 |
| BW: | 75 |
| WW: | 638 |

| CE | BW | WW | YW | MK | TM | CEM | ST | REA | IMF | FAT | TERM | FERT | |
|----------------------------------|-------|----|--------|----|----|------|------|------------------------------|------|------|------|------|--|
| 6.4 | -1.0 | 19 | 45 | 14 | 24 | 3.98 | 1.25 | .17 | -.01 | .001 | 2.03 | 3.40 | |
| BREED PERCENTILE RANKING PER EPD | | | | | | | | | | | | | |
| 35 | 20 | 60 | 45 | 10 | 25 | 35 | 75 | 60 | 75 | 40 | 45 | 70 | |
| Breed % | 100BN | | OWNER: | | | | | Southern Arkansas University | | | | | |

Brangus

SAU 331L

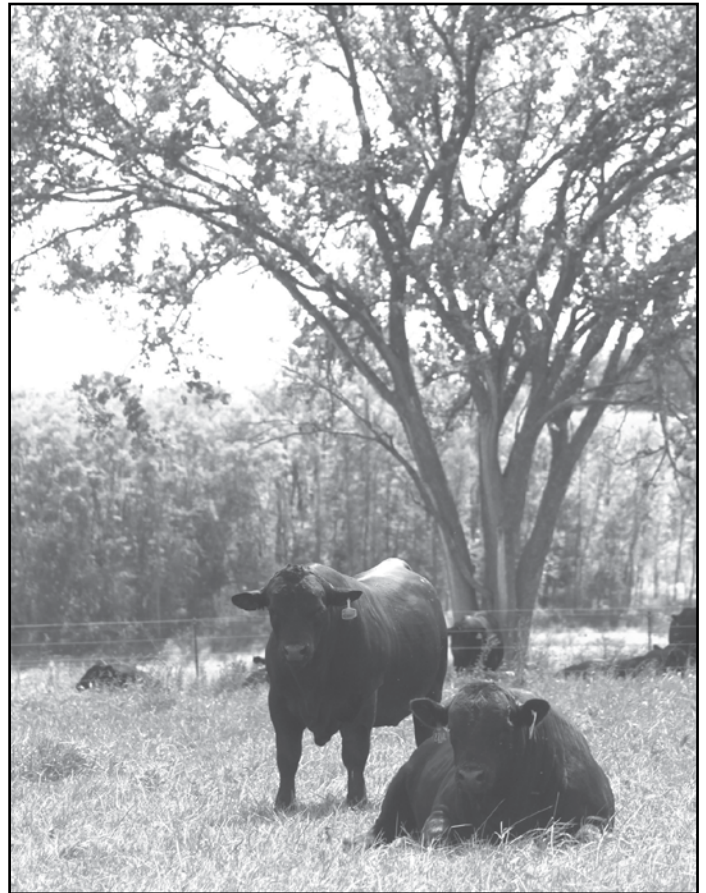
SUHN'S MAJESTIK BEACON 30C
SAU 008H
SAU 604K

SUHN'S MAJESTIK BEACON 30C
SAU 022H
SAU 406H

226

| | |
|--------|-----------|
| REG #: | 10524129 |
| BD: | 2/28/2023 |
| BW: | 77 |
| WW: | 580 |

| CE | BW | WW | YW | MK | TM | CEM | ST | REA | IMF | FAT | TERM | FERT | |
|----------------------------------|-------|----|--------|----|----|------|------|------------------------------|------|------|------|------|--|
| 4.0 | 0.6 | 23 | 54 | 5 | 17 | 3.16 | 2.01 | .21 | -.03 | .006 | 2.10 | 3.58 | |
| BREED PERCENTILE RANKING PER EPD | | | | | | | | | | | | | |
| 70 | 65 | 45 | 25 | 85 | 65 | 65 | 45 | 55 | 85 | 55 | 45 | 60 | |
| Breed % | 100BN | | OWNER: | | | | | Southern Arkansas University | | | | | |



Brangus

SAU 342L

TJM MAIN EVENT 59C10
SAU 805M
SAU 008C

DMR THE CHAIRMAN 415A11
SAU 721L
SAU 319G

227

| | |
|--------|-----------|
| REG #: | 10524138 |
| BD: | 3/11/2023 |
| BW: | 77 |
| WW: | 596 |

| CE | BW | WW | YW | MK | TM | CEM | ST | REA | IMF | FAT | TERM | FERT | |
|----------------------------------|-------|----|--------|----|----|------|------|------------------------------|-----|------|------|------|--|
| 6.9 | -1.0 | 10 | 20 | 10 | 16 | 3.15 | 1.47 | .18 | .02 | .000 | .99 | 3.61 | |
| BREED PERCENTILE RANKING PER EPD | | | | | | | | | | | | | |
| 30 | 20 | 85 | 95 | 35 | 70 | 65 | 65 | 60 | 70 | 35 | 85 | 60 | |
| Breed % | 100BN | | OWNER: | | | | | Southern Arkansas University | | | | | |



Four States Classic
SPRING TURNOUT
SATURDAY, APRIL 19, 2025
Replacement
1 P.M. AT HOPE LIVESTOCK
HOPE, ARKANSAS
Female Sale



VIEW CONSIGNED CATTLE AT
LBJCATTLE.COM
Updates made daily

*Selling over 500 of the
finest commercial females
in the Four States Area!*

CONTACT

Lanny Ford, 870.703.4345
Bart Emerson, 870.904.6671
Jeff Milam, 870.703.0716

Terms & Conditions

Terms: Terms of the sale are cash or personal check unless satisfactory credit arrangements have been made with the seller previous to the sale.

Bidding: All animals sell to the highest bidder. Any disputes or challenges regarding bids shall be settled by the auctioneer and his decision shall be final. Mailed or telephoned bids will be handled with the strictest confidence.

Registrations & Transfers: Each animal which is offered and sold has a certificate of registry available at the time of sale. The seller is responsible for the proper transfer of the certificate to the purchaser including full payment of transfer fees.

Purchaser's Risk: Each animal becomes the property of and therefore is also the risk of the purchaser as soon as it is sold.

Announcements: Any errors or changes in information contained in the catalog will be announced from the auction block. Such announcements shall take precedence over information contained herein.

Rights and Obligations: The above terms and conditions of sale constitute a contract between the buyer and seller of each animal and shall be equally binding to both. Animals resold following purchase in this sale shall constitute a separate transaction and the rights and obligations of the parties connected thereto are not covered by the above terms and conditions of this sale. Neither the host farm, auctioneers, nor any other person connected with the management or conduct of this sale assumes any liability, legal or otherwise, except as set forth above.

DEFINITIONS AND GUARANTEES

HORNED: An animal with a horn growth affixed to the skull that has or has not been removed.

POLLED/SCURRED: An animal with rudimentary horn growth that will not develop into a horn. The rudimentary horn growth may or may not become affixed to the skull at an older age.

POLLED: An animal with absence of horn growth (An animal can have scurs and still be genetically polled)

DOUBLE POLLED: An animal whose sire and dam are both polled or scurred, this gives this animal the possibility of being homozygous polled for the polled trait but it is not yet proven so.

HOMOZYGOUS POLLED: An animal who carries two polled genes, and will produce polled or polled/scurred offspring with every mating.

DILUTER GENE: A gene carried by some Gelbvieh cattle that affects the degree of red color in the hair coat. Bulls carrying this gene can produce gray calves when mated to black cows or cream colored calves when mated to each other.

DILUTER FREE: All Red Angus are free of the diluter gene as are all red Gelbvieh cattle resulting from a double black mating. Red Gelviesh can also be proven diluter-free by mating to black cows and producing all red or black offspring

DOUBLE BLACK: An animal whose sire and dam are both black, which give the animal the possibility of being homozygous for the black trait but its not yet proven so.

HOMOZYGOUS BLACK: An animal who carries two black genes and has been proven by mating or genetically tested to produce black or black factor (gray when mated with diluter-based genetics) calves with every mating.

For more information contact: Seedstock Plus Toll Free at: 877-486-1160 or John on his cell: 660-734-1165 or visit the website: www.seedstockplus.com

Seedstock Plus Sale Calendar

North Missouri Bull Sale

February 22, 2025

125 Balancer & Gelbvieh Bulls - all Black!
Kingsville Livestock, Kingsville, MO

Arkansas Bull Sale

March 1, 2025

75 Angus, Brangus, Gelbvieh
& Balancer Bulls - Red & Black!
Hope Livestock Auction, Hope, AR

Red Reward Bull & Heifer Sale

March 8, 2025

50 Red Gelbvieh & Balancer Bulls
Plus! Red Comm & Registered Females
Wheeler Livestock, Osceola, MO

South Missouri Bull & Female Sale

March 22, 2025

125 Balancer & Gelbvieh Bulls - all Black!
Plus! Black Comm & Registered Open Heifers
Joplin Regional Stockyards, Carthage, MO

Keep Your Mind in the Market

Volatile commodity markets and the speed at which narrow windows of opportunity to manage risk open and close underscore the value of keeping your mind engaged in the market, no matter how frequently you trade cattle.

That's why Seedstock Plus continues to offer as a free service to its customers and members a complimentary subscription to the daily Cattle Current electronic newsletter. It offers a convenient snapshot of the previous day's cash and futures markets for calves, feeders, fed cattle and related commodities. You'll also find pertinent market-related news.

If you're not receiving Cattle Current, or if you'd like to receive it at more than one e-mail address, please let us know and we'll add you to the list. You can send your request to wes@cattlecurrent.com.

Working Together for Industry Excellence



Seedstock Plus

18864 Kepler Dr.

St. Catharine, MO 64628

RETURN SERVICE REQUESTED

FIRST CLASS MAIL

