

*Seedstock Plus North Missouri
Bull Sale*

February 22, 2025

12 noon

*Kingsville Livestock Market
Kingsville, Missouri*

*ALL BULLS SELL WITH GENOMIC-ENHANCED EPDS!
ALL ARE SIRE VERIFIED, COAT COLOR & POLLED TESTED!*



Bid & Buy at:
DVAuction

Working Together for Industry Excellence

S+

Seedstock Plus

Seedstock Plus North Missouri Bull Sale

Saturday February 22, 2025 * 12 noon

Kingsville Livestock Market, Kingsville, MO

Driving Directions: For those of you with a GPS - the street address of the Kingsville Livestock Auction is: 1630 SW State Route 58, Kingsville, MO 64061

Coming from the east: I-70 to exit 49 - hwy 13 south to Warrensburg. West on hwy 50 to hwy 58. turn south on 58 (which will curve back to the east) go thru Holden. Sale barn will be on south side of hwy 58 before Kingsville.

Coming from the west or Kansas City: The best way to come would be to take hwy 50 to hwy W south to Kingsville - turn east on 58 and sale barn will be on south side of hwy outside of town.

Coming from the south: Take hwy 2 east at Harrisonville. Turn north on hwy T. turn east on hwy 58 and sale barn will be on south side of hwy east of town.

Travel:

Commercial Air Service is available to Kansas City, MO. (about 2 hours north west of sale) .If you need to be picked up at the airport, just let us know in advance!

Accommodations:

Comfort Inn, Warrensburg Station

660-429-4848

Best Western Inn, Warrensburg

660-747-3000

Super 8 Motel, Warrensburg

660-429-2183

Comfort Inn, Harrisonville

816-884-4124

Working Together for Industry Excellence



Seedstock Plus

Seedstock Plus Customer Service Programs

Guaranteed Sight-Unseen Purchases

Free Delivery on bulls
or \$100 Discount if picked up sale day

Bull Warranty Program

Bulls are guaranteed for Fertility, Structure and Disposition. For an additional 5% of purchase price, bull can be warrantied for injury and death for 6 months.

Marketing Assistance Program

- Feeder Calves
- Replacement Females
- Bred Heifers, Cows and Pairs

If you need additional information on a particular program, call us at the Seedstock Plus office.

Health

Seedstock Plus Bulls have been tested and found negative for PI BVD. We recommend producers purchase only bulls that are negative for Persistent Infected BVD Virus. **Bulls are also tested NEGATIVE for Trichomoniasis.** This is not mandated by every state yet but some states are requiring it and we felt it best to be on top of that. The bulls have been vaccinated and boosted with IBR, BVD, PI-3, BRSV-4, Blackleg & Vibrio Lepto. They have been on a regular de-worming schedule since weaning. All the bulls have passed a breeding soundness exam that includes live semen evaluation, palpation, extention and scrotal measurement. All the necessary health tests have been performed and interstate health papers will be available sale day.

Seedstock Plus North Missouri Bull Sale

February 22, 2025 * 12 noon

Kingsville Livestock Auction, Kingsville, MO

John Burbank cell: 660-734-1165

Matt Burbank cell: 660-734-2739

Lanny Ford cell: 870-703-4345

Sale Day Office (Laurie): 660-734-2446

Jeremy Anstine, Kingsville Livestock Auctioneer..... 816-716-9288

Tucker Anstine, ring service.....816-345-0860

Doug Fager, ring service..... 913-645-9497

Selling: 120 - BLACK Balancer & Gelbvieh 18 Month Old Bulls

About the Bulls:

- Prior to delivery to the test, bulls are sorted and culled at home
- Bulls are brought in to be fed together at a Regional Development Center
- Bulls are grown with their longevity in mind - fed for 3# ADG with high roughage ration
- Bulls are culled again prior to catalog for poor gain, conformation, disposition, etc.
- All bulls have passed a thorough breeding soundness exam prior to the sale
- All bulls are tested Negative for BVD -PI3 & Trichomoniasis
- All bulls have genomically enhanced EPDs and are Sire Verified!
- All Gelbvieh & Balancer bulls are Polled and Coat Color tested.
- The bulls are Guaranteed 'Free' of the currently known Genetic Defects we can test for.
- EPDs update weekly so there will be updated EPDs, Tenderness scores, Ultrasound, frame scores & scrotal measurements available on a supplement sheet early the week of the sale.
- **EPDs ARE CURRENT AS OF 1/7/2025**



We are planning to video each of the bulls on February 10 - 12th - after they have been semen checked and clipped. The videos will be posted during that week and will be available to view by February 16th. If you would like to see a video of a specific bull and have access to high speed internet - you can go to our website OR www.dvauction.com and download the videos by the bull's LOT #.

Internet Bidding:

The sale will be available to watch and bid real time at www.dvauction.com 1. Create an account under the 'create new account' tab.

2. Apply for bidding by clicking 'apply for bidding' in the upper left corner of the screen. **AT LEAST 24 HOURS PRIOR TO THE SALE!**

3. Tune in to the sale to make your purchases!

Working Together for Industry Excellence



Seedstock Plus

Seedstock Plus, LLC

John E. Burbank, CEO

18864 Kepler Dr.

St. Catharine, MO 64628

Toll Free: 877-486-1160 or

cell: 660-734-1165

email: john@seedstockplus.com

www.seedstockplus.com

DVAuction Broadcasting
Real-time Auctions

Industry Commitment

The bulls included in this offering come from producers who are in the Seedstock business for the long haul. They raise the kind of bulls that produce the type of feeder calves that feed well and grade and yield on the rail. These are the kind of bulls that produce the replacement heifers that make our commercial customers so successful. Feel free to contact any of the members listed below if you have questions.

4 W Farms

Contact: Brycen Wiedmer
Troy, KS
816-262-4172

Hebron Ranch

Contact: Daniel Bell
Olaton, KY
270-274-1749

Narrow Gate Cattle

Contact: Larry Kendall
Osage Beach, MO
573-216-9719

Springhaven Farm LLC

Contact: Ken Anderson
Belton, MO
816-506-7947

Bryce Family Farms LLC

Contact: Bryce Cripps
Columbia, MO
573-808-4742

Horizon Farms

Contact: Ed Laverentz
Cheney, KS
316-990-5088

Norwood Gelbvieh

Contact: Jerry Norwood
Carthage, MO
417-850-1023

Stuecken Brothers

Contact: Derek Stuecken
Freeburg, MO
573-690-8543

Burbank Cattle Company

Contact: Matt Burbank
St. Catharine, MO
660-734-2739

JGP Gelbvieh

Contact: Josh Phillips
Lathrop, MO
816-914-6053

Pecan Ridge Gelbvieh

Contact: Jaron Franks
Albertville, AL
256-426-3782

Wannabe Stock Farm

Contact: Gregory Summers
Smithville, MO
816-392-5242

Burns Gelbvieh

Contact: Jesse Burns
Covington, OH
937-606-4861

KZ Cattle Company

Contact: Kerry Zillinger
Columbus, KS
785-543-7614

Pederson Gelbvieh

Contact: David Pederson
Buffalo, MN
320-333-2014

Wolf Gelbvieh

Contact: Travis Wolf
Gothenburg, NE
308-529-3733

Chapuis Cattle Company

Contact: Charlie Chapuis
Louisiana, MO
573-754-0079

L & L Gelbvieh

Contact: Wes Lasher
Smithland, KY
270-564-2315

Reinert Family Farm

Contact: John Reinert
Billings, MO
417-224-7204

Zimmerman Gelbvieh

Contact: Tyler Zimmerman
Harper, KS
620-243-2876

Darnell Farms

Contact: Bobby Darnell
Indian Mound, TN
931-624-5174

Lawman Farms

Contact: Kathleen Merritt
Columbia, MO
419-439-3730

Rex Wood Farms

Contact: Rex Wood
Meadville, MO
660-247-2577

Duck River Gelbvieh

Contact: David Bates
Duck River, TN
931-209-5053

Little Sioux Gelbvieh

Contact: Jack Welle
Milford, IA
712-251-4641

RM Cattle

Contact: Ryan Grable
Troy, KS
785-850-0686

Flint Hills Gelbvieh

Contact: Ronald Schultz
Alma, KS
785-617-0033

Meng Farms Cattle Co.

Contact: Doug Meng
Troy, KS
913-370-0334

Rockin' U Ranch

Contact: Stan Utley
Richmond, MO
816-719-3793

Gatson Gelbvieh

Contact: Adam Gatson
Vandalia, MO
573-721-6482

Mulroy Farms LLC

Contact: Tim Mulroy
Mayetta, KS
785-640-6401

Sandy Knoll Farm Gelbvieh

Contact: Brian L Dunn
St. John, KS
620-786-4039

About The Catalog:

Color possibilities:
 Black - known red carrier
 Homo Black - known homozygous black

Polled Status:
 Polled: Single Polled
 Scurred
 Homo Polled

Balancer

COLOR

POLLED

540

EPD'S: All Bulls have an LD Profile and 'Genomic Enhanced EPDs'.

Breed Percentile Ranking: This number corresponds to the EPD directly above it to compare EPDs within breed.

PFX NAME

GRAND SIRE
 SIRE
 GRAND DAM
 MAT GRAND SIRE
 DAM
 MAT GRAND DAM

REG #:	REG #:
BD:	B DATE
BW:	BW
WW:	Adj WW

Actual Data:
 Registration #
 Birthdate
 Actual BW
 Adjusted WW

CE	BW	WW	YW	MK	TM	CEM	ST	DOC	CW	REA	MB	\$C	FPI	EPI
BREED PERCENTILE RANKING PER EPD														
Breed %														
OWNER:														

Breed Make-up on Balancer bulls. Abbreviations include: AN = Black Angus AR = Red Angus GV = Gelbvieh XX = unknown

Expected Progeny Differences 'EPD' Definitions

The American Gelbvieh Association transitioned to the BOLT system for EPD calculations in the fall of 2018. The American Angus Association had already been using this system for the previous year. There are 12 beef breed Associations in collaboration to form IGS (International Genetic Solutions) which brings a new, streamlined method for incorporating genomic results into the EPDs. This incorporates data and updates EPDs on a weekly basis.

EPD Definitions:

CE: Calving Ease – A number that predicts the average difference in ease with which a sire's calves will be born when he is bred to first calf heifers – **higher numbers indicate greater calving-ease.**

BW: Birth Weight, **WW:** Weaning Weight & **YW:** Yearling Weight – All are expressed in pounds, this shows the expected number of pounds a bull or female will add or subtract from their progeny's birthweight, weaning weight and yearling weight respectively.

MK: Milk: expressed in pounds of weaning weight that a female will add/subtract or that a bull's daughters will have.

TM: Total Maternal - expresses the combination of what a sire transmits to his daughters in the form of genetics for growth and genetics for milking ability. Or that same trait directly applied to a female and expressed in pounds.

CEM: Calving Ease Maternal: this EPD predicts how well an animal's daughters will calve with a higher number being easier calving.

ST: Stayability: Predicts the genetic difference, in terms of percent probability, that a bull's daughters will stay productive within a herd to at least six year of age.

DOC: is expressed as a difference in yearling cattle temperament, with a higher value indicating more favorable docility. It predicts the average difference of progeny from a sire in comparison with another sire's calves. In herds where temperament problems are not an issue, this expected difference would not be realized.

CW: Carcass Weight: expressed in pounds of carcass weight adjusted to a constant fat endpoint.

REA: Rib Eye Area: expressed in square inches of rib eye muscle area adjusted to a constant fat endpoint.

MB: Marbling: expressed in degrees of marbling score, a determinant of USDA Quality Grade. Value is adjusted to a constant fat endpoint.

\$C_{ow}: Represents the genetic value in dollars of profit of an animal when retained as a replacement female relative to other animals in the herd. A higher number represents more profitable genetics for maternal productivity.

FPI: An economic selection index designed to aid producers in selecting sires whose progeny will perform in the feedlot and are sold on grade and yield.

EPI: An economic selection index developed to aid producers in selecting for more feed efficient cattle that still have acceptable amounts of gain.



We are proud to announce that moving forward, all Seedstock Plus bulls will be developed by Burbank Bull Development LLC in St. Catharine, MO. Matt & Cammie Burbank, with the help of their kids, will handle the daily feed & care of all Seedstock Plus bulls, on-line females and growing bulls from weaning until graduating into the Seedstock Plus development test.

We would like to thank the crew at RJM Farms in Holden, MO for many years of excellent work on behalf of the Seedstock Plus group developing the bulls for our program. The entire Anstine family, Tim & Janet Evert and others in the Holden area are friends, customers and have contributed to the past success of Seedstock Plus. We will continue to support those relationships in the Warrensburg, Holden and Kingsville area but admit that we are excited to bring the development of the Seedstock Plus bulls home.

We would encourage anyone to come visit the new and improved facility that will accommodate all we do here at home and all the needs of the Seedstock Plus program. Although we did not install the GrowSafe system (due to cost & labor issues), we have made some significant improvements to the bull development process such as large pasture turn-out paddocks for the bulls. Our family is committed to the future success of the Seedstock Plus program.

Bull Warranty Program Insurance for your bull!

Several years ago, Seedstock Plus instituted an insurance program for new bull purchases in an effort to protect our customers from a catastrophic loss if something should happen to a bull within the first breeding season. This program covers any and all possible things that a bull can do to himself in the first six months of ownership. The warranty costs **5%** of the purchase price and should you have to use it, we try to either bring you a comparable replacement or find a suitable loaner bull to get the cows bred if you are still in the midst of breeding season. If something happens to him towards the end of the season, we still cover that but often will either take the bull back and issue a credit towards your next purchase or have you ship the bull, keep the salvage funds and issue a credit for the balance. Any way you look at it - we get you back even! We've warrantied bulls that have been hit by lightning, hit by trains, drowned, broken various body parts or been injured in such a way that he won't ever be sound to breed cows again.

There are very few affordable commercial insurance policies that will cover a bull for loss of use. Farm policies will cover 'acts of God' (so do we!) but again, an injury is just your tough luck. The **5%** of purchase price cost is a small price if something happens to your bull within that first 6 months!

We appreciate the fact that you've put your trust in us to present you with a bull that has a good disposition, good feet and legs and will breed cows - we feel those things should be 'on us' and you don't need insurance if you have a problem in one of these areas - you just need to let us know and we'll take care of it. We try to catch every possible problem prior to the sale but things happen and bulls are bulls.... But if your bull gets injured or dies, he needs to be insured! Take a good look at what the warranty can offer you and be sure to tell us at the settlement table that you want to insure your bull!

About Balancer® Bulls

The Profitable Blend of Angus and Gelbvieh Genetics!

Balancer hybrids offer a simple and powerful way to maintain hybrid vigor and the proper blend of British and Continental genetics in your cowherd without complicated crossbreeding systems. Registered Balancer hybrids combine the Angus advantages of calving ease, moderate mature size, marbling and convenience traits with Gelbvieh growth, muscle leanness, fertility and unequaled pounds of calf per cow exposed in a single animal. And, documented research proves that Balancer hybrids offer the same consistency as their purebred parents with improved uniformity of composition. Plus, Balancers are registered seedstock, complete with documented parentage and EPD's. Balancer bulls are registered as Gelbvieh and Angus or Red Angus hybrids with a minimum of 75% of the pedigree documented and with both the sire and the dam recorded with their respective association. There are also registered Hybrid bulls in this category, the difference being a varying percentage of Gelbvieh as well as a mixture of other breeds. These bulls can be used in a similar way as the Balancer bulls as long as the buyer is aware of the actual breed makeup as close as can be known.

Both the Balancer & Hybrid bulls' EPD's are figured on the Gelbvieh base and can be compared to the Gelbvieh bulls.

The average EPD's for Balancer bulls as of 1/7/2025 are:

CE: 13 BW: -0.5 WW: 73 YW: 114 Milk: 23 TM: 60 CEM: 7 ST: 15
DOC: 12 CW: 38 REA: .52 MB: .38 \$C: 107.46 FPI: 83.08 EPI: 117.36

Balancer Homo Black Homo Polled

GMF 342L

SANDPOINT BUTKUS X797
PANTHER CR BUTKUS 6703
PANTHER CR ERROLINE 400

DLGO AMERICAN OUTLAW F015
GMF MENG 129J
GMF MENG 458B

REG #:	1585474
BD:	8/6/2023
BW:	77
WW:	546

CE	BW	WW	YW	MK	TM	CEM	ST	DOC	CW	REA	MB	\$C	FPI	EPI
14	-0.4	75	124	13	56	10	16	18	40	.41	.35	110.58	82.70	91.48
BREED PERCENTILE RANKING PER EPD														
35	50	40	30	>95	75	10	30	1	45	75	55	45	50	80
Breed %				50GV 50AN			OWNER:				Meng Farms Cattle Company			

Balancer Homo Black Homo Polled

DAMG Moonshiner 80L

SYDGEN ENHANCE
MSHP SMOKEYS MOONSHINER
MTB BCC MISS BALANCE 46A

SKF DUNN OPTIMUS 031B
JEB BCC MS OPTIMUS 076H
NNR MISS EXCLUSIVE 13C

REG #:	1576420
BD:	8/6/2023
BW:	88
WW:	574

CE	BW	WW	YW	MK	TM	CEM	ST	DOC	CW	REA	MB	\$C	FPI	EPI
9	2.3	104	166	23	75	5	14	16	58	.55	.62	105.01	103.10	157.80
BREED PERCENTILE RANKING PER EPD														
95	95	1	1	55	2	80	55	2	5	45	10	55	1	15
Breed %				41GV 59AN			OWNER:				Reinert Family Farm			

Balancer Homo Black Homo Polled

GMF 312L

CCRO CAROLINA LEVERAGE 3214A
WAHL 004H ET
FHG FLYING H MS LEGACY 48Y

MA DETAIL 1608
MA ELLUNIA 2067
MA ELLUNA 065

REG #:	1585484
BD:	7/17/2023
BW:	81
WW:	559

CE	BW	WW	YW	MK	TM	CEM	ST	DOC	CW	REA	MB	\$C	FPI	EPI
10	-1.0	71	114	30	67	8	16	13	51	.42	.82			92.40
BREED PERCENTILE RANKING PER EPD														
90	40	60	50	5	15	30	30	30	15	70	2			15
Breed %				44GV 56AN			OWNER:				Meng Farms Cattle Company			

Balancer Homo Black Homo Polled

NORG Expo L210

K C F BENNETT EXPONENTIAL
DBRG MR EXPONENTIAL 1403J ET
DBRG MS TWISTER 8167F ET

NORG LUCKY F780
NORG HONEY H21
NORG HONEY Z21

REG #:	1585380
BD:	8/8/2023
BW:	68
WW:	683

CE	BW	WW	YW	MK	TM	CEM	ST	DOC	CW	REA	MB	\$C	FPI	EPI
13	0.9	79	121	26	66	6	17	12	42	.66	.63	115.39	91.75	127.24
BREED PERCENTILE RANKING PER EPD														
50	80	25	35	25	20	65	20	50	35	25	10	35	15	40
Breed %				52GV 48AN			OWNER:				Norwood Gelbvieh			

Balancer Homo Black Homo Polled

GMF 335L

SANDPOINT BUTKUS X797
PANTHER CR BUTKUS 6703
PANTHER CR ERROLINE 400

DLGO AMERICAN OUTLAW F015
GMF MENG 127J
GMF MENG 671D

REG #:	1585472
BD:	7/31/2023
BW:	78
WW:	585

CE	BW	WW	YW	MK	TM	CEM	ST	DOC	CW	REA	MB	\$C	FPI	EPI
14	-0.6	71	111	14	54	10	15	12	36	.38	.56	102.35	85.06	95.94
BREED PERCENTILE RANKING PER EPD														
35	50	60	60	>95	85	10	40	50	55	80	15	65	40	75
Breed %				50GV 50AN			OWNER:				Meng Farms Cattle Company			

Balancer Homo Black Homo Polled

DAMG Mr Highlights 84L

JKGF DITKA C85
LRSF HIGH LIFE H64
SINK MS EDISON 319A

MTB BCC PEDRO 6A
ORF 3G
REAM RC GOLDEN

REG #:	1576583
BD:	8/11/2023
BW:	84
WW:	583

CE	BW	WW	YW	MK	TM	CEM	ST	DOC	CW	REA	MB	\$C	FPI	EPI
12	-0.2	84	130	22	64	7	16	15	48	.61	.34	111.36	87.20	160.78
BREED PERCENTILE RANKING PER EPD														
65	55	15	20	65	30	45	30	5	20	35	60	45	30	15
Breed %				52GV 48AN			OWNER:				Reinert Family Farm			

BALANCER BULLS

Balancer Homo Black Homo Polled **7+**
WNBE 330L

KCF BENNETT QUALITY FOCUSED
 DCSF POST ROCK HIGHLY FOCUSED
 DCSF POST ROCK SANDY 273W2

MYTTY IN FOCUS
 WNBE 130J
 WNBE 930G

REG #:	1576584
BD:	8/11/2023
BW:	54
WW:	578

CE	BW	WW	YW	MK	TM	CEM	ST	DOC	CW	REA	MB	\$C	FPI	EPI
22	-5.7	46	70	29	52	12	19	14	23	.06	.59	124.62	80.21	74.32
BREED PERCENTILE RANKING PER EPD														
1	1	>95	>95	10	90	1	5	15	90	>95	15	20	65	90
Breed %		42GV 58AN			OWNER:		Wannabe Stock Farm							

Balancer Black Homo Polled **11+**
WNBE 397L

TMMW DESTINATION 82Y
 BTBR SAGUARO 8111F ET
 JEB BCC MISS OBJECTIVE 41W

WNBE 447B
 WNBE 097H
 WNBE 497B

REG #:	1577174
BD:	8/20/2023
BW:	77
WW:	737

CE	BW	WW	YW	MK	TM	CEM	ST	DOC	CW	REA	MB	\$C	FPI	EPI
13	-0.5	74	115	23	60	9	16	12	34	.38	.59	116.50	88.57	127.76
BREED PERCENTILE RANKING PER EPD														
50	50	45	50	55	50	15	30	50	65	80	15	35	25	40
Breed %		59GV 41AN			OWNER:		Wannabe Stock Farm							

Balancer Homo Black Homo Polled **8+**
NORG Big Whiskey L159

VRT LAZY TV SAM U451
 PROB NORG BIG WHISKEY 12H
 PROB MISS JUSTICE 317F

HPR ROYAL BISMARCK 0504
 TMMW MISS BISMARCK 159B
 TMMW GRAMITES MISS PRIDE 99Y

REG #:	1582056
BD:	8/14/2023
BW:	70
WW:	604

CE	BW	WW	YW	MK	TM	CEM	ST	DOC	CW	REA	MB	\$C	FPI	EPI
14	1.1	69	102	28	62	8	19	14	31	.78	.17	137.17	77.26	81.82
BREED PERCENTILE RANKING PER EPD														
35	35	65	80	15	40	30	5	15	75	10	90	10	80	85
Breed %		69GV 31AN			OWNER:		Norwood Gelbvieh							

Balancer Homo Black Homo Polled **12+**
CCFM 369L

CTR JACKPOT 6C ET
 CCFM 212G
 CCFM 303A

CTR HOT LOTTO 6549D
 CCFM 086H
 CCFM 353A

REG #:	1608348
BD:	8/21/2023
BW:	74
WW:	629

CE	BW	WW	YW	MK	TM	CEM	ST	DOC	CW	REA	MB	\$C	FPI	EPI
10	1.3	72	112	24	62	6	16	14	39	.62	.09			72.68
BREED PERCENTILE RANKING PER EPD														
90	85	55	55	45	40	65	30	15	45	30	>95			95
Breed %		66GV 25AN 9XX			OWNER:		Chapuis Cattle Farm							

Balancer Homo Black Homo Polled **9+**
RFFM Highlife Stunner 91L

JKGF DITKA C85
 LRSF HIGH LIFE H64
 SINK MS EDISON 319A

TMGC SB ARNOLD 225W
 RFFM 19E ARNOLD 21G
 RFFM CINDY CONSENSUS 19C

REG #:	1577169
BD:	8/19/2023
BW:	83
WW:	598

CE	BW	WW	YW	MK	TM	CEM	ST	DOC	CW	REA	MB	\$C	FPI	EPI
13	-0.1	85	133	18	61	5	16	13	43	.48	.41	109.06	89.45	165.06
BREED PERCENTILE RANKING PER EPD														
50	60	10	15	90	45	80	30	35	60	40	50	20	10	10
Breed %		52GV 48AN			OWNER:		Reinert Family Farm							

Balancer Homo Black Homo Polled **13+**
WNBE 335L

TMMW DESTINATION 82Y
 BTBR SAGUARO 8111F ET
 JEB BCC MISS OBJECTIVE 41W

VRT LAZY TV WATCHMAN W021
 WNBE 030H
 DCSF POST ROCK TWILA 167A8

REG #:	1577273
BD:	8/22/2023
BW:	64
WW:	619

CE	BW	WW	YW	MK	TM	CEM	ST	DOC	CW	REA	MB	\$C	FPI	EPI
18	-3.6	70	101	21	56	11	20	13	33	.28	.56	137.30	89.23	117.68
BREED PERCENTILE RANKING PER EPD														
4	5	65	80	75	75	3	3	30	65	90	15	5	25	50
Breed %		56GV 44AN			OWNER:		Wannabe Stock Farm							

Balancer Homo Black Homo Polled **10+**
RGCC Powercat 389L

JRI PROBITY 254D28
 JGPG PROBITY 138J ET
 JGPG BLACKCAP 7216E

PJM DIEHL TENDERBULL 1166Y
 RGCC LADY CAT 647D
 RGCC LADY CAT 5Y

REG #:	1579010
BD:	8/20/2023
BW:	84
WW:	599

CE	BW	WW	YW	MK	TM	CEM	ST	DOC	CW	REA	MB	\$C	FPI	EPI
11	0.4	94	144	27	74	6	15	12	58	.67	.48	108.93	96.94	156.89
BREED PERCENTILE RANKING PER EPD														
80	70	2	5	20	2	65	40	50	5	25	25	50	5	15
Breed %		56GV 44AN			OWNER:		RM Cattle							

Balancer Homo Black Homo Polled **14+**
RFFM Highlife Dynamite 92L

JKGF DITKA C85
 LRSF HIGH LIFE H64
 SINK MS EDISON 319A

TMGC SB ARNOLD 225W
 RUR JOSIE 130E
 ABF 0130X

REG #:	1577531
BD:	8/24/2023
BW:	79
WW:	565

CE	BW	WW	YW	MK	TM	CEM	ST	DOC	CW	REA	MB	\$C	FPI	EPI
13	-2.7	66	95	16	49	6	22	12	33	.50	.32	140.55	77.98	136.01
BREED PERCENTILE RANKING PER EPD														
50	15	80	90	>95	95	65	1	50	65	55	65	4	75	30
Breed %		52GV 48AN			OWNER:		Reinert Family Farm							

BALANCER BULLS

Balancer Homo Black Homo Polled **15+**
WNBE 332L

KCF BENNETT QUALITY FOCUSED
 DCSF POST ROCK HIGHLY FOCUSED
 DCSF POST ROCK SANDY 273W2

MYTTY IN FOCUS
 WNBE 132J
 WNBE 931G

REG #:	1577534
BD:	8/24/2023
BW:	60
WW:	652

CE	BW	WW	YW	MK	TM	CEM	ST	DOC	CW	REA	MB	\$C	FPI	EPI
18	-2.3	63	100	28	59	9	14	13	39	.25	.69	91.05	87.91	118.43
BREED PERCENTILE RANKING PER EPD														
4	15	90	80	15	55	15	55	30	45	95	5	85	30	50
Breed %			35GV 65AN			OWNER:			Wannabe Stock Farm					

Balancer Homo Black Homo Polled **19+**
WNBE 349L

CCRO CAROLINA LEVERAGE 3214A
 DCH HILLE STOCK OPTIONS D410
 DCH HILLE B189 ET

TMGC SB ARNOLD 225W
 WNBE 049H
 WNBE 849U

REG #:	1577990
BD:	8/29/2023
BW:	75
WW:	624

CE	BW	WW	YW	MK	TM	CEM	ST	DOC	CW	REA	MB	\$C	FPI	EPI
12	-1.6	79	118	24	64	7	21	12	36	.54	.36	137.41	87.25	129.65
BREED PERCENTILE RANKING PER EPD														
65	25	25	40	45	30	45	1	50	55	50	55	5	30	40
Breed %			75GV 25AN			OWNER:			Wannabe Stock Farm					

Balancer Homo Black Homo Polled **16+**
RUR Desert Storm 520L

TMMW DESTINATION 82Y
 BTBR SAGUARO 8111F ET
 JEB BCC MISS OBJECTIVE 41W

GSRT DEACON 908D
 RUR DEACON'S DUCHESSE 20H
 RUR SARAH 20F

REG #:	1592559
BD:	8/28/2023
BW:	58
WW:	567

CE	BW	WW	YW	MK	TM	CEM	ST	DOC	CW	REA	MB	\$C	FPI	EPI
16	-0.8	85	139	19	61	10	18	15	53	.67	.51	131.14	94.41	149.99
BREED PERCENTILE RANKING PER EPD														
15	45	10	10	85	45	10	10	5	10	25	20	10	10	20
Breed %			72GV 28AN			OWNER:			Rockin'-U-Ranch					

Balancer Homo Black Homo Polled **20+**
JEB BCC Black Balance 3L

S A V FINAL ANSWER 0035
 EGL LIFELINE B101
 EGL ESTELLE X014

ERTL BARGAINING CHIP D677
 MTB BCC MS CHIPPY 87J
 MTB BCC MS DESTINATION 508E ET

REG #:	1593667
BD:	8/30/2023
BW:	70
WW:	612

CE	BW	WW	YW	MK	TM	CEM	ST	DOC	CW	REA	MB	\$C	FPI	EPI
14	-0.3	83	132	24	65	7	9	12	48	.88	.27	78.10	87.10	135.71
BREED PERCENTILE RANKING PER EPD														
35	55	15	15	45	25	45	>95	50	20	4	75	95	30	35
Breed %			51GV 49AN			OWNER:			Burbank Cattle Company					

Balancer Homo Black Homo Polled **17+**
TMMW Mr Derecho 103L

DBRG WHIRLWIND 735E
 VRT LAZY TV DERECHO J660
 VRT LAZY TV WINNIE G133

TMMW HOLE IN ONE 93D
 TMMW MISS HOLE IN ONE 293F
 TMMW MISS KRUGER 81A

REG #:	1591260
BD:	8/29/2023
BW:	63
WW:	709

CE	BW	WW	YW	MK	TM	CEM	ST	DOC	CW	REA	MB	\$C	FPI	EPI
12	-2.3	72	112	32	68	7	18	11	41	.47	.24	119.06	81.95	194.87
BREED PERCENTILE RANKING PER EPD														
65	15	55	55	2	15	45	10	75	40	60	80	30	55	2
Breed %			60GV 40AN			OWNER:			Mulroy Farms LLC					

Balancer Homo Black Homo Polled **21+**
RUR El Hefe 4815L

TMMW DESTINATION 82Y
 BTBR SAGUARO 8111F ET
 JEB BCC MISS OBJECTIVE 41W

RES TEN X 122 7008 4303
 DRGF 815F
 SNB DELIGHT 955W

REG #:	1592582
BD:	8/30/2023
BW:	72
WW:	527

CE	BW	WW	YW	MK	TM	CEM	ST	DOC	CW	REA	MB	\$C	FPI	EPI
16	-1.6	69	109	20	56	10	14	12	34	.55	.66	96.24	89.07	147.24
BREED PERCENTILE RANKING PER EPD														
15	25	65	60	80	75	10	55	50	65	45	10	75	25	25
Breed %			56GV 44AN			OWNER:			Rockin'-U-Ranch					

Balancer Homo Black Homo Polled **18+**
TMGC SB Civil War 247L

V A R DISCOVERY 2240
 JKG CIVIL WAR E92
 JKG LOTTIE C92

DJZ FINAL ANSWER 8E
 TMMW MISS FINAL ANSWER 159H
 TMMW MISS NEVADA 14C

REG #:	1588020
BD:	8/29/2023
BW:	70
WW:	674

CE	BW	WW	YW	MK	TM	CEM	ST	DOC	CW	REA	MB	\$C	FPI	EPI
16	-1.5	78	134	20	59	11	18	12	36	.34	.60	129.41	93.91	126.32
BREED PERCENTILE RANKING PER EPD														
15	30	30	15	80	55	3	10	50	55	85	10	15	10	40
Breed %			50GV 50AN			OWNER:			Stuecken Bros					



BALANCER BULLS

Balancer Homo Black Homo Polled **22+**
BRNS 360L

DLW LIFELINE 5065E
 TMMW MR LIFELINE 63H
 TMMW MISS NEVADA 54B

TMMW NEVADAS MR BANKER 57A
 TMMW MISS BANKER 146D
 TMMW MISS EXTRA CIM 7018T

REG #:	1613515
BD:	9/2/2023
BW:	84
WW:	560

CE	BW	WW	YW	MK	TM	CEM	ST	DOC	CW	REA	MB	\$C	FPI	EPI
14	1.9	76	123	15	53	7	13	12	46	.73	.53	91.70	85.89	57.81
BREED PERCENTILE RANKING PER EPD														
35	95	35	30	>95	85	45	70	50	25	15	20	85	35	>95
Breed %		49GV 51AN			OWNER:		Burns Gelbvieh							

Balancer Homo Black Homo Polled **25+**
RGCC Powercat 3105L

BTBR SAGUARO 8111F ET
 TMGC SB CACTUS 29H
 TMGC SB BLACKCAP FOCUS 05Y

HRZN D336
 RGCC LADY CAT 024H
 RGCC LADY CAT 344A

REG #:	1579022
BD:	9/3/2023
BW:	88
WW:	569

CE	BW	WW	YW	MK	TM	CEM	ST	DOC	CW	REA	MB	\$C	FPI	EPI
13	0.1	90	144	24	69	8	16	13	59	.72	.27		89.92	
BREED PERCENTILE RANKING PER EPD														
50	65	4	5	45	10	30	30	30	5	15	75		20	
Breed %		45GV 55AN			OWNER:		RM Cattle							

Balancer Homo Black Homo Polled **23+**
TMMW Mr Derecho 107L

DBRG WHIRLWIND 735E
 VRT LAZY TV DERECHO J660
 VRT LAZY TV WINNIE G133

DLW TPG PAYIN BILLS 3048C
 TMMW MISS PAYIN BILLS 224E
 TMMW MISS KRUGER 145A

REG #:	1591264
BD:	9/2/2023
BW:	70
WW:	584

CE	BW	WW	YW	MK	TM	CEM	ST	DOC	CW	REA	MB	\$C	FPI	EPI
16	-2.1	71	111	26	62	9	17	10	25	.45	.40	116.19	85.74	194.98
BREED PERCENTILE RANKING PER EPD														
15	20	60	60	25	40	15	20	90	90	65	45	35	35	2
Breed %		51GV 49AN			OWNER:		Mulroy Farms LLC							

Balancer Black Homo Polled **26+**
GATS Gatson Logic Luigi 314L

KCF BENNETT E158
 TMGC SB NEW LOGIC 147H
 TMGC SB PEARL 321Z

TMGC SB ARNOLD 225W
 GATS GATSON ARNOLD'S FIONA 814F
 RLBG BIANCA C019

REG #:	1578273
BD:	9/4/2023
BW:	74
WW:	535

CE	BW	WW	YW	MK	TM	CEM	ST	DOC	CW	REA	MB	\$C	FPI	EPI
15	-4.5	65	94	24	57	8	20	14	20	.51	.17	133.39	77.99	204.00
BREED PERCENTILE RANKING PER EPD														
25	2	80	90	45	70	30	3	15	95	55	90	10	75	2
Breed %		69GV 31AN			OWNER:		Gatson Gelbvieh							

Balancer Black Homo Polled **24+**
RFFM Moonshiner Fireball 93L

SYDGEN ENHANCE
 MSHP SMOKEYS MOONSHINER
 MTB BCC MISS BALANCE 46A

TMMW DESTINATION 82Y
 RFFM FALCON DESTINATION 33F
 TWPG CHAR C68

REG #:	1578160
BD:	9/3/2023
BW:	78
WW:	622

CE	BW	WW	YW	MK	TM	CEM	ST	DOC	CW	REA	MB	\$C	FPI	EPI
11	0.3	89	146	24	69	7	16	15	46	.77	.34	116.98	91.43	165.84
BREED PERCENTILE RANKING PER EPD														
80	70	5	4	45	10	45	30	5	25	10	60	30	15	10
Breed %		63GV 37AN			OWNER:		Reinert Family Farm							

Balancer Homo Black Homo Polled **27+**
RDW 309L

CCRO CAROLINA LEVERAGE 3214A
 ERTL BARGAINING CHIP D677
 KCS BLACKBIRD 7707

MOGCK SURE SHOT
 RDW 383C
 ZJC BLACK BALANCE 69W

REG #:	1594272
BD:	9/5/2023
BW:	62
WW:	594

CE	BW	WW	YW	MK	TM	CEM	ST	DOC	CW	REA	MB	\$C	FPI	EPI
13	-1.2	76	124	25	63	8	18	12	53	.58	.68	126.08	93.23	167.63
BREED PERCENTILE RANKING PER EPD														
50	35	35	30	35	35	30	10	50	10	40	5	20	10	10
Breed %		31GV 69AN			OWNER:		Rex Wood Farms							



Balancer Black Homo Polled **28+**
RDW 311L KML

VRT LAZY TV TANK X315
 NORG COMBAT READY D54
 NORG QUEEN A54

BTBR BLACK CROSS HERO 4031
 RDW 704G WTL
 CAZ BLACK BALANCE 14W

REG #:	1594248
BD:	9/5/2023
BW:	68
WW:	657

CE	BW	WW	YW	MK	TM	CEM	ST	DOC	CW	REA	MB	\$C	FPI	EPI
14	-1.3	68	92	27	62	9	17	8	30	.51	.43	113.26	82.03	76.13
BREED PERCENTILE RANKING PER EPD														
35	35	70	95	20	40	15	20	>95	75	55	35	40	55	90
Breed %		50GV 50AN			OWNER:		Rex Wood Farms							

BALANCER BULLS

Balancer Homo Black Homo Polled **29+**
RUR Desert Bravo 29L

TMMW DESTINATION 82Y
 BTBR SAGUARO 8111F ET
 JEB BCC MISS OBJECTIVE 41W

REG #:	1592563
BD:	9/5/2023
BW:	69
WW:	561

TMMW GOVENORS MR IDEAL 216X
 RUR LILLY 29G
 ZJC MISS BLACK 29W ET

CE	BW	WW	YW	MK	TM	CEM	ST	DOC	CW	REA	MB	\$C	FPI	EPI
15	-1.8	74	119	19	56	10	19	9	28	.61	.41	135.10	86.33	118.22
BREED PERCENTILE RANKING PER EPD														
25	25	45	40	85	75	10	5	95	80	35	40	10	35	50
Breed %		69GV 31AN			OWNER:		Rockin'-U-Ranch							

Balancer Homo Black Homo Polled **33+**
RDW 326L

S A V FINAL ANSWER 0035
 EGL LIFELINE B101
 EGL ESTELLE X014

REG #:	1594280
BD:	9/8/2023
BW:	72
WW:	619

FHG FLYING H MR GUN 36A
 RDW 421D
 RDW 190B

CE	BW	WW	YW	MK	TM	CEM	ST	DOC	CW	REA	MB	\$C	FPI	EPI
15	0.2	75	109	22	60	7	11	14	31	.68	.19	81.03	78.79	78.19
BREED PERCENTILE RANKING PER EPD														
25	65	40	60	65	50	45	90	15	75	20	90	95	75	90
Breed %		63GV 37AN			OWNER:		Rex Wood Farms							

Balancer Homo Black Homo Polled **30+**
CHMB BCC Black Balance 7L

JKGF CHIEF JUSTICE C205
 OGSF OVER FOR JUSTICE 217F
 WHITE ROCK PRIDE U 217

REG #:	1593671
BD:	9/7/2023
BW:	64
WW:	551

ERTL BARGAINING CHIP D677
 CHMB BCC MS CHIPPIE 24J
 MTB BCC MISS OVERTIME 59B

CE	BW	WW	YW	MK	TM	CEM	ST	DOC	CW	REA	MB	\$C	FPI	EPI
17	-3.6	58	92	23	52	10	16	14	23	.24	.62	108.60	84.87	109.88
BREED PERCENTILE RANKING PER EPD														
10	5	95	95	55	90	10	30	15	90	95	10	50	40	60
Breed %		48GV 52AN			OWNER:		Burbank Cattle Company							

Balancer Homo Black Homo Polled **34+**
TMMW Mr Exponential 116L

K C F BENNETT EXPONENTIAL
 DBRG MR EXPONENTIAL 1158J
 DBRG MS EXCLUSIVE 5179C ET

REG #:	1591275
BD:	9/9/2023
BW:	73
WW:	567

SKF DUNNS SHIFT 04C
 TMMW MISS LEACHMAN SHIFT 143E
 TMMW MISS MEDINA 96C

CE	BW	WW	YW	MK	TM	CEM	ST	DOC	CW	REA	MB	\$C	FPI	EPI
18	-4.6	56	92	25	54	9	17	13	27	.17	.82	115.11	89.81	103.65
BREED PERCENTILE RANKING PER EPD														
4	2	>95	95	35	85	15	20	30	85	>95	2	35	20	65
Breed %		52GV 48AN			OWNER:		Mulroy Farms LLC							

Balancer Homo Black Homo Polled **31+**
JEB BCC Black Balance 8L

JKGF CHIEF JUSTICE C205
 OGSF OVER FOR JUSTICE 217F
 WHITE ROCK PRIDE U 217

REG #:	1593673
BD:	9/7/2023
BW:	58
WW:	537

TMMW MR READY CASH 21G
 JEB BCC MS CASH 27J
 JEB BCC MS CHIPPY 36F

CE	BW	WW	YW	MK	TM	CEM	ST	DOC	CW	REA	MB	\$C	FPI	EPI
18	-2.4	62	98	23	54	10	18	19	30	.35	.53	124.73	83.88	111.51
BREED PERCENTILE RANKING PER EPD														
4	15	90	85	55	85	10	10	1	75	85	20	20	45	60
Breed %		48GV 52AN			OWNER:		Burbank Cattle Company							

Balancer Homo Black Homo Polled **35+**
RDW 333L TJL

VRT LAZY TV WATCHMAN W021
 SKF DUNN OPTIMUS 031B
 SKF DUNNS MISS SANDY 125Y

REG #:	1594253
BD:	9/9/2023
BW:	75
WW:	657

S A V PLATINUM 0010
 RDW 332C
 RDW MISS VALUE 174A

CE	BW	WW	YW	MK	TM	CEM	ST	DOC	CW	REA	MB	\$C	FPI	EPI
12	-0.7	80	118	23	64	8	12	16	44	.25	.64	88.89	92.14	90.18
BREED PERCENTILE RANKING PER EPD														
65	45	25	40	55	30	30	85	2	30	95	10	90	15	80
Breed %		31GV 69AN			OWNER:		Rex Wood Farms							

Balancer Homo Black Homo Polled **32+**
SWW Justice Kat 379L54 ET

JKGF CHIEF JUSTICE C205
 JKGF 417 JUSTICE F819
 JKGF MISS MAY C18

REG #:	1578422
BD:	9/7/2023
BW:	ET
WW:	ET

S A V FINAL ANSWER 0035
 MLG MEADOWLARKS KIT KAT 379X
 MLG MEADOWLARKS KIT KAT 267K

CE	BW	WW	YW	MK	TM	CEM	ST	DOC	CW	REA	MB	\$C	FPI	EPI
12	-0.1	78	121	23	62	8	14	13	35	.48	.49	98.60	88.08	101.02
BREED PERCENTILE RANKING PER EPD														
65	60	30	35	55	40	30	55	30	60	60	25	70	25	70
Breed %		63GV 37AN			OWNER:		Wolf Gelbvieh							

Balancer Homo Black Homo Polled **36+**
CHMB BCC Black Balance 12L

JKGF CHIEF JUSTICE C205
 OGSF OVER FOR JUSTICE 217F
 WHITE ROCK PRIDE U 217

REG #:	1593676
BD:	9/10/2023
BW:	64
WW:	570

GSRT DEACON 908D
 CHMB BCC MS DEACON 26J
 CHMB BCC MS CHIP 19G

CE	BW	WW	YW	MK	TM	CEM	ST	DOC	CW	REA	MB	\$C	FPI	EPI
19	-1.6	74	109	22	59	12	14	15	32	.44	.55	108.13	90.18	114.90
BREED PERCENTILE RANKING PER EPD														
2	25	45	60	65	55	1	55	5	70	70	15	50	20	55
Breed %		59GV 41AN			OWNER:		Burbank Cattle Company							

BALANCER BULLS

Balancer Homo Black Homo Polled **37+**
LAW Mark 339L

DLW TPG JACKPOT 7551B ET
 BWF BRANDYWINE GUNNAR 942G
 BWF 208Z

FHCC EMPAHSIZE 8552
 FHCC EVERGREEN 1405
 FHCC EVERGREEN 7530

REG #:	1615352
BD:	9/10/2023
BW:	81
WW:	764

CE	BW	WW	YW	MK	TM	CEM	ST	DOC	CW	REA	MB	\$C	FPI	EPI
10	2.3	86	145	30	73	7	13	18	58	.61	.72		96.33	
BREED PERCENTILE RANKING PER EPD														
90	95	10	4	5	3	45	70	1	5	35	4		5	
Breed %			50GV 50AN			OWNER:			Lawman Farms					

Balancer Homo Black Homo Polled **41+**
DRGF 332L

DDGR RESILIENT 275D
 GMF 034H
 GMF MENG 57C

RES TEN X 122 7008 4303
 DRGF 701E
 JEB DR BCC MISS BALANCE 201C

REG #:	1601572
BD:	9/11/2023
BW:	73
WW:	708

CE	BW	WW	YW	MK	TM	CEM	ST	DOC	CW	REA	MB	\$C	FPI	EPI
11	3.0	91	139	30	78	6	15	16	54	.75	.36	112.13	89.27	152.86
BREED PERCENTILE RANKING PER EPD														
80	>95	3	10	5	1	65	40	2	10	15	55	40	25	20
Breed %			69GV 31AN			OWNER:			Duck River Gelbvieh					

Balancer Homo Black Homo Polled **38+**
NGCC NG Cactus L5

BTBR SAGUARO 8111F ET
 TMGC SB CACTUS 52H
 TMGC SB BRIDGET 110D OF 2022/802U

Y-WONDERFUL J57Y
 TALY TALLEY MS BALANCER J105B
 TALY 43Z

REG #:	1581786
BD:	9/10/2023
BW:	90
WW:	549

CE	BW	WW	YW	MK	TM	CEM	ST	DOC	CW	REA	MB	\$C	FPI	EPI
12	1.1	78	124	27	66	7	18	12	43	.76	.45	125.40	85.90	161.82
BREED PERCENTILE RANKING PER EPD														
65	85	30	30	20	20	45	10	50	35	15	35	20	35	15
Breed %			50GV 42AN			OWNER:			Narrow Gate Cattle					

Balancer Homo Black Homo Polled **42+**
RFFM Stellar Saguaro 94L

TMMW DESTINATION 82Y
 BTBR SAGUARO 8111F ET
 JEB BCC MISS OBJECTIVE 41W

TMGC SB ARNOLD 225W
 BWF BRANDYWINE CARRIE 538C
 BWF BRANDYWINE ANTONIA 316A

REG #:	1579276
BD:	9/11/2023
BW:	77
WW:	610

CE	BW	WW	YW	MK	TM	CEM	ST	DOC	CW	REA	MB	\$C	FPI	EPI
18	-4.9	64	98	23	55	12	21	9	20	.34	.50	144.98	86.83	130.37
BREED PERCENTILE RANKING PER EPD														
4	2	85	85	55	80	1	1	95	95	85	25	2	30	40
Breed %			69GV 31AN			OWNER:			Reinert Family Farm					

Balancer Homo Black Homo Polled **39+**
RDW 338L

BARSTOW CASH
 JJNR READY CASH B52C
 JJNR MISS FORTUNES 69RX

BTBR BLACK CROSS HERO 4031
 RDW 525E
 RDW 318C

REG #:	1594286
BD:	9/10/2023
BW:	74
WW:	603

CE	BW	WW	YW	MK	TM	CEM	ST	DOC	CW	REA	MB	\$C	FPI	EPI
11	1.3	72	108	24	60	5	18	11	24	.79	.40	122.46	80.84	81.37
BREED PERCENTILE RANKING PER EPD														
80	85	55	65	45	50	80	10	75	90	10	45	25	60	85
Breed %			50GV 50AN			OWNER:			Rex Wood Farms					

Balancer Homo Black Homo Polled **43+**
TMGC SB Cactus 163L

TMMW DESTINATION 82Y
 BTBR SAGUARO 8111F ET
 JEB BCC MISS OBJECTIVE 41W

TMGC SB FORMULA 12E
 TMGC SB DANISH 203J
 TMGC SB SILENCE 147F

REG #:	1587946
BD:	9/11/2023
BW:	68
WW:	647

CE	BW	WW	YW	MK	TM	CEM	ST	DOC	CW	REA	MB	\$C	FPI	EPI
12	-2.2	82	135	19	60	8	18	12	38	.63	.58	126.82	95.22	189.40
BREED PERCENTILE RANKING PER EPD														
65	20	20	15	85	50	30	10	50	50	30	15	15	10	3
Breed %			62GV 38AN			OWNER:			Stuecken Bros					

Balancer Homo Black Homo Polled **40+**
TMGC SB Barcelona 229L

CCRO CAROLINA LEVERAGE 3214A
 TMGC SB FORMULA 12E
 TMGC SB DANIELLE 07C

DL DUALY
 TMGC SB LADY DUALY 200F
 CIRCLE A BLACKCAP 1276

REG #:	1588002
BD:	9/10/2023
BW:	79
WW:	627

CE	BW	WW	YW	MK	TM	CEM	ST	DOC	CW	REA	MB	\$C	FPI	EPI
13	1.1	91	146	20	66	9	13	14	58	.67	.62	98.13	97.42	201.95
BREED PERCENTILE RANKING PER EPD														
50	85	3	4	80	20	15	70	15	5	25	10	70	4	2
Breed %			39GV 61AN			OWNER:			Stuecken Bros					

Balancer Homo Black Homo Polled **44+**
TMGC SB Cactus 167L

TMMW DESTINATION 82Y
 BTBR SAGUARO 8111F ET
 JEB BCC MISS OBJECTIVE 41W

JKGF CIVIL WAR E92
 ERTL 1728J MISS CW 728
 ERTL 728E GOVERNESS DITKA

REG #:	1587949
BD:	9/11/2023
BW:	70
WW:	688

CE	BW	WW	YW	MK	TM	CEM	ST	DOC	CW	REA	MB	\$C	FPI	EPI
15	-2.1	79	132	21	60	11	16	11	43	.67	.40	120.93	89.55	160.68
BREED PERCENTILE RANKING PER EPD														
25	20	25	15	75	50	3	30	75	35	25	45	25	20	15
Breed %			58GV 42AN			OWNER:			Stuecken Bros					

BALANCER BULLS

Balancer Homo Black Homo Polled **45+**
RDW 344L

MTB BCC PEDRO 6A
 DJZ SYMMETRY 55D
 JEB BCC MISS BALANCE 54A

MTB BCC PEDRO 6A
 RDW 734G
 RDW MISS BLACK VALUE 132Y

REG #:	1594290
BD:	9/12/2023
BW:	76
WW:	608

CE	BW	WW	YW	MK	TM	CEM	ST	DOC	CW	REA	MB	\$C	FPI	EPI
10	-1.5	59	98	26	56	6	18	8	41	.14	.42	117.23	75.43	106.22
BREED PERCENTILE RANKING PER EPD														
90	30	95	85	25	75	65	10	>95	40	>95	40	30	85	65
Breed %			50GV 50AN			OWNER:		Rex Wood Farms						



Balancer Homo Black Homo Polled **46+**
GATS Gatson # Lightning McQueen 333L

DCH HILLE D453
 GLM HASHTAG# H11
 GLM W55

TMGC SB SILENT NIGHTS 2005B
 TMGC SB SILENCE 236E
 TMGC SB VENUS 114B

REG #:	1578948
BD:	9/13/2023
BW:	92
WW:	675

CE	BW	WW	YW	MK	TM	CEM	ST	DOC	CW	REA	MB	\$C	FPI	EPI
12	1.8	88	134	27	71	7	14	17	46	1.00	.14	110.64	84.17	155.69
BREED PERCENTILE RANKING PER EPD														
65	95	10	15	20	5	45	55	1	25	2	95	45	45	15
Breed %			74GV 20AN 6AR			OWNER:		Gatson Gelbvieh						

Balancer Homo Black Homo Polled **49+**
LAW Mark 341L

DLW TPG JACKPOT 7551B ET
 BWF BRANDYWINE GUNNAR 942G
 BWF 208Z

ELLINGSON CHAPS 4095
 FHCC EVERGREEN 0407
 FHCC EVERGREEN 8511

REG #:	1583805
BD:	9/14/2023
BW:	70
WW:	615

CE	BW	WW	YW	MK	TM	CEM	ST	DOC	CW	REA	MB	\$C	FPI	EPI
13	-0.9	68	110	26	60	7	16	14	36	.58	.40			81.08
BREED PERCENTILE RANKING PER EPD														
50	40	70	60	25	50	45	30	15	55	40	45			60
Breed %			50GV 50AN			OWNER:		Lawman Farms						

Balancer Homo Black Homo Polled **47+**
TMMW Mr Exponential 125L

K C F BENNETT EXPONENTIAL
 DBRG MR EXPONENTIAL 1158J
 DBRG MS EXCLUSIVE 5179C ET

TMMW HOLE IN ONE 93D
 TMMW MISS BANKER 85G
 TMMW MISS BISMARCK 100A

REG #:	1591283
BD:	9/13/2023
BW:	66
WW:	655

CE	BW	WW	YW	MK	TM	CEM	ST	DOC	CW	REA	MB	\$C	FPI	EPI
17	-2.4	71	107	26	62	9	14	12	37	.53	.37	104.75	84.77	122.27
BREED PERCENTILE RANKING PER EPD														
10	15	60	65	25	40	15	55	50	55	50	50	60	40	45
Breed %			60GV 40AN			OWNER:		Mulroy Farms LLC						

Balancer Homo Black Homo Polled **50+**
TMMW Mr Treasure 129L

MGR TREASURE
 TAU FORTUNE 8H ET
 TAU MS GUNNISON 106R 3147A

STG MR MEDINA 51Y14
 TMMW MISS MEDINA 218C
 TMMW KRUGERS DELIGHT 929W

REG #:	1591287
BD:	9/14/2023
BW:	77
WW:	670

CE	BW	WW	YW	MK	TM	CEM	ST	DOC	CW	REA	MB	\$C	FPI	EPI
14	-1.2	78	127	22	62	9	19	15	54	.42	.51	123.10	89.77	123.61
BREED PERCENTILE RANKING PER EPD														
35	35	30	25	65	40	15	5	5	10	70	20	20	20	45
Breed %			53GV 47AN			OWNER:		Mulroy Farms LLC						

Balancer Homo Black Homo Polled **48+**
DWBX Samuel 189L

TMMW DESTINATION 82Y
 BTBR SAGUARO 8111F ET
 JEB BCC MISS OBJECTIVE 41W

TMMW MR READY CASH 24F
 DWBX DEBORAH 160J
 HCRX QUEEN ESTHER 132G

REG #:	1580104
BD:	9/14/2023
BW:	60
WW:	657

CE	BW	WW	YW	MK	TM	CEM	ST	DOC	CW	REA	MB	\$C	FPI	EPI
14	-2.3	75	126	17	54	9	18	10	47	.60	.47	130.28	88.19	150.95
BREED PERCENTILE RANKING PER EPD														
35	15	40	25	95	85	15	10	90	25	35	30	15	25	20
Breed %			58GV 42AN			OWNER:		Hebron Christian Ranch						

Balancer Homo Black Homo Polled **51+**
RUR Cactus Kelcey 1840L

TMMW DESTINATION 82Y
 BTBR SAGUARO 8111F ET
 JEB BCC MISS OBJECTIVE 41W

DVE DAVIDSON CHESTER 72B
 GMF MENG 840F
 MENG SIGNIFICANT 534C

REG #:	1592576
BD:	9/14/2023
BW:	67
WW:	554

CE	BW	WW	YW	MK	TM	CEM	ST	DOC	CW	REA	MB	\$C	FPI	EPI
16	-0.6	75	120	20	58	10	17	10	37	.35	.38	116.35	84.50	145.39
BREED PERCENTILE RANKING PER EPD														
15	50	40	35	80	65	10	20	90	55	85	50	35	40	25
Breed %			56GV 44AN			OWNER:		Rockin'-U-Ranch						

BALANCER BULLS



Balancer Homo Black Homo Polled **55+**

TMMW Mr Derecho 136L

DBRG WHIRLWIND 735E
VRT LAZY TV DERECHO J660
VRT LAZY TV WINNIE G133

TMMW HOLE IN ONE 93D
TMMW MISS HOLE IN ONE 145G
TMMW MISS GOVENOR 129Z

REG #:	1591294
BD:	9/17/2023
BW:	76
WW:	724

CE	BW	WW	YW	MK	TM	CEM	ST	DOC	CW	REA	MB	\$C	FPI	EPI
14	-0.5	84	127	34	76	8	16	12	43	.56	.14	114.90	84.66	213.54
BREED PERCENTILE RANKING PER EPD														
35	50	15	25	1	1	30	30	50	35	45	95	35	40	1
Breed %			70GV 30AN			OWNER:			Mulroy Farms LLC					

Balancer Homo Black Homo Polled **52+**

RUR Senor Saquaro 30L

TMMW DESTINATION 82Y
BTBR SAGUARO 8111F ET
JEB BCC MISS OBJECTIVE 41W

JKGF CHIEF JUSTICE C205
RUR SUNSHINE 30F
ZJC MISS BLACK 29W ET

REG #:	1592565
BD:	9/14/2023
BW:	71
WW:	572

CE	BW	WW	YW	MK	TM	CEM	ST	DOC	CW	REA	MB	\$C	FPI	EPI
15	-2.3	74	119	20	57	9	24	11	30	.46	.39	157.75	86.50	148.57
BREED PERCENTILE RANKING PER EPD														
25	15	45	40	80	70	15	1	75	75	65	45	1	35	20
Breed %			69GV 31AN			OWNER:			Rockin'-U-Ranch					

Balancer Homo Black Homo Polled **56+**

DRGF 346L

GMF FORTUNE 616D
HRZN H182
HRZN E103

STG MR MEDINA 51Y14
TMMW MISS MEDINA 177D
TMMW MISS KRUGER 125Z

REG #:	1601542
BD:	9/18/2023
BW:	74
WW:	603

CE	BW	WW	YW	MK	TM	CEM	ST	DOC	CW	REA	MB	\$C	FPI	EPI
11	3.1	92	147	21	67	5	12	12	37	.77	.22	88.37	86.84	154.13
BREED PERCENTILE RANKING PER EPD														
80	>95	3	3	75	15	80	85	50	55	10	85	90	30	20
Breed %			67GV 33AN			OWNER:			Duck River Gelbvieh					

Balancer Black Homo Polled **53+**

RDW 351L WTL

BARSTOW CASH
JJNR READY CASH B52C
JJNR MISS FORTUNES 69RX

JJNR MONEY TALKS B43C
RDW 603F
RDW 170B

REG #:	1594256
BD:	9/15/2023
BW:	82
WW:	764

CE	BW	WW	YW	MK	TM	CEM	ST	DOC	CW	REA	MB	\$C	FPI	EPI
8	2.7	82	129	26	67	4	15	10	35	.64	.45	109.63	86.02	135.93
BREED PERCENTILE RANKING PER EPD														
>95	>95	20	20	25	15	95	40	90	60	30	35	45	35	35
Breed %			50GV 50AN			OWNER:			Rex Wood Farms					

Balancer Black Homo Polled **57+**

GATS Gatson Logic Linus 344L

KCF BENNETT E158
TMGC SB NEW LOGIC 147H
TMGC SB PEARL 321Z

XXB KING GEORGE 918S ET
KKKG TRIPLE K 375C CATHERINE
KKKG TRIPLE K MISS PASSION

REG #:	1579565
BD:	9/18/2023
BW:	89
WW:	590

CE	BW	WW	YW	MK	TM	CEM	ST	DOC	CW	REA	MB	\$C	FPI	EPI
12	0.0	74	108	23	60	6	21	14	33	.62	.09	138.79	75.50	221.39
BREED PERCENTILE RANKING PER EPD														
65	60	45	65	55	50	65	1	15	65	30	>95	5	85	1
Breed %			75GV 25AN			OWNER:			Gatson Gelbvieh					

Balancer Homo Black Homo Polled **54+**

JEB BCC Black Balance 23L

SYDGEN ENHANCE
MSHP SMOKEYS MOONSHINER
MTB BCC MISS BALANCE 46A

DBCC FINAL OBJECTIVE
JEB BCC MISS OBJECTIVE 8B
JEB BCC MISS BALANCE 14Z

REG #:	1593687
BD:	9/17/2023
BW:	74
WW:	656

CE	BW	WW	YW	MK	TM	CEM	ST	DOC	CW	REA	MB	\$C	FPI	EPI
13	-2.5	72	116	24	61	5	14	14	41	.13	.74	94.57	92.80	156.40
BREED PERCENTILE RANKING PER EPD														
50	15	55	45	45	45	80	55	15	40	>95	3	80	15	15
Breed %			28GV 72AN			OWNER:			Burbank Cattle Company					

Balancer Black Homo Polled **58+**

GCMG JGPG Rebel Yell 3208L

JRI PROBITY 254D28
TJB REBEL YELL 804F ET
TJB ANISSA 921U ET

JRI OKLAHOMA 246C4
GCMG JGPG MITZI 2108Z 0206H
MART JGPG MITZI 2108Z ET

REG #:	1591757
BD:	9/18/2023
BW:	64
WW:	682

CE	BW	WW	YW	MK	TM	CEM	ST	DOC	CW	REA	MB	\$C	FPI	EPI
13	1.6	82	128	23	64	7	17	10	40	.70	.24	123.49	82.89	120.10
BREED PERCENTILE RANKING PER EPD														
50	90	20	20	55	30	45	20	90	45	20	80	20	50	50
Breed %			60GV 40AN			OWNER:			JGP Gelbvieh					

BALANCER BULLS

Balancer Homo Black Homo Polled **59+**

MTB BCC Black Balance 28L

JKGF CHIEF JUSTICE C205
OGSG OVER FOR JUSTICE 217F
WHITE ROCK PRIDE U 217

TMMW MR READY CASH 21G
MTB BCC MS CASH 71J
JEB BCC MS OPTIMUS 69D

REG #:	1593692
BD:	9/19/2023
BW:	62
WW:	561

CE	BW	WW	YW	MK	TM	CEM	ST	DOC	CW	REA	MB	\$C	FPI	EPI
17	-1.5	66	104	22	55	9	17	15	38	.63	.42	121.22	82.35	103.73
BREED PERCENTILE RANKING PER EPD														
10	30	80	75	65	80	15	20	5	50	30	40	25	55	65
Breed %	49GV 51AN		OWNER:		Burbank Cattle Company									

Balancer Homo Black Homo Polled **63+**

TMGC SB Longitude 275L

CKS LEGACY E64
CKS UNRIVALED G54
CKS MS EASE E57

S A V RESOURCE 1441
SB RESOURCE ENTENSE 8025E
CIRCLE A ENTENSE 1264

REG #:	1588049
BD:	9/20/2023
BW:	84
WW:	692

CE	BW	WW	YW	MK	TM	CEM	ST	DOC	CW	REA	MB	\$C	FPI	EPI
12	2.8	100	157	28	78	5	15	15	68	1.01	-.12	107.02	83.47	162.17
BREED PERCENTILE RANKING PER EPD														
65	>95	1	1	15	1	80	40	5	1	1	>95	55	50	15
Breed %	50GV 50AN		OWNER:		Stuecken Bros									

Balancer Homo Black Homo Polled **60+**

TMGC SB Cactus 185L

TMMW DESTINATION 82Y
BTBR SAGUARO 8111F ET
JEB BCC MISS OBJECTIVE 41W

TMGC SB SILENT NIGHTS 2005B
TMGC SB SILENCE 15G
TMGC SB MADONNA 03D

REG #:	1587967
BD:	9/19/2023
BW:	68
WW:	652

CE	BW	WW	YW	MK	TM	CEM	ST	DOC	CW	REA	MB	\$C	FPI	EPI
17	-1.1	90	150	26	70	12	18	13	55	.64	.54	124.56	99.47	185.57
BREED PERCENTILE RANKING PER EPD														
10	35	4	3	25	10	1	10	30	10	30	20	20	3	4
Breed %	55GV 45AN		OWNER:		Stuecken Bros									

Balancer Homo Black Homo Polled **64+**

JGPG Rebel Yell 3214L

JRI PROBITY 254D28
TJB REBEL YELL 804F ET
TJB ANISSA 337M ET

JCB LAZY TV BEECH JET R052 ET
JGPG JULIA 519B 0207H ET
VER MISS JULIA 519B

REG #:	1591763
BD:	9/21/2023
BW:	68
WW:	672

CE	BW	WW	YW	MK	TM	CEM	ST	DOC	CW	REA	MB	\$C	FPI	EPI
12	2.9	76	121	24	62	6	15	13	53	.78	.20	108.44	76.31	98.83
BREED PERCENTILE RANKING PER EPD														
65	>95	35	35	45	40	65	40	30	10	10	90	50	85	70
Breed %	50GV 50AN		OWNER:		JGP Gelbvich									

Balancer Homo Black Homo Polled **61+**

MTB BCC Black Balance 29L

JKGF CHIEF JUSTICE C205
OGSG OVER FOR JUSTICE 217F
WHITE ROCK PRIDE U 217

TMMW MR READY CASH 21G
MTB BCC MS CASH 66J
MTB BCC MISS OBJECTIVE 12B

REG #:	1593693
BD:	9/20/2023
BW:	64
WW:	542

CE	BW	WW	YW	MK	TM	CEM	ST	DOC	CW	REA	MB	\$C	FPI	EPI
17	-1.9	67	106	23	56	9	15	15	38	.55	.40	103.34	82.88	112.26
BREED PERCENTILE RANKING PER EPD														
10	20	75	70	55	75	15	40	5	50	45	45	60	50	55
Breed %	48GV 50AN 2AR		OWNER:		Burbank Cattle Company									

Balancer Homo Black Homo Polled **65+**

LAW Mark 346L

DLW TPG JACKPOT 7551B ET
BWF BRANDYWINE GUNNAR 942G
BWF 208Z

SYDGEN ENHANCE
LAW 0417H
FHCC EISA ERICA 5506

REG #:	1582398
BD:	9/21/2023
BW:	81
WW:	704

CE	BW	WW	YW	MK	TM	CEM	ST	DOC	CW	REA	MB	\$C	FPI	EPI
10	-0.5	69	122	30	66	5	18	12	52	.59	.52		84.51	
BREED PERCENTILE RANKING PER EPD														
90	50	65	30	5	20	80	10	50	15	40	20		40	
Breed %	50GV 50AN		OWNER:		Lawman Farms									

Balancer Black Homo Polled **62+**

DRGF 313L

TMMW DESTINATION 82Y
BTBR SAGUARO 8111F ET
JEB BCC MISS OBJECTIVE 41W

SKF DUNN OPTIMUS 031B
TMGC SB OPAL 286J
TMGC SB TRIBUTE 32G

REG #:	1601531
BD:	9/20/2023
BW:	61
WW:	664

CE	BW	WW	YW	MK	TM	CEM	ST	DOC	CW	REA	MB	\$C	FPI	EPI
14	-1.5	82	126	21	62	9	19	12	32	.27	.61	132.48	94.69	115.85
BREED PERCENTILE RANKING PER EPD														
35	30	20	25	75	40	15	5	50	70	95	10	10	10	55
Breed %	63GV 34AN 3AR		OWNER:		Duck River Gelbvich									

Balancer Homo Black Homo Polled **66+**

RUR Mahomes 735L

TMMW DESTINATION 82Y
BTBR SAGUARO 8111F ET
JEB BCC MISS OBJECTIVE 41W

JKGF DITKA C85
RUR MS FANCY PANTS 735F
WNBE 735T

REG #:	1592571
BD:	9/21/2023
BW:	71
WW:	593

CE	BW	WW	YW	MK	TM	CEM	ST	DOC	CW	REA	MB	\$C	FPI	EPI
16	-0.2	85	132	20	63	11	18	13	49	.58	.19	123.47	85.34	156.72
BREED PERCENTILE RANKING PER EPD														
15	55	10	15	80	35	3	10	30	20	40	90	20	40	15
Breed %	56GV 44AN		OWNER:		Rockin'-U-Ranch									

BALANCER BULLS



Balancer Homo Black Homo Polled **70+**

TMMW Mr Exponential 165L

K C F BENNETT EXPONENTIAL
DBRG MR EXPONENTIAL 1158J
DBRG MS EXCLUSIVE 5179C ET

STG MR MEDINA 51Y14
TMMW MISS MEDINA 125E
TMMW KRUGERS MISS ERICA 261X

REG #:	1591323
BD:	9/28/2023
BW:	69
WW:	690

CE	BW	WW	YW	MK	TM	CEM	ST	DOC	CW	REA	MB	\$C	FPI	EPI
17	-0.9	77	119	27	66	9	14	11	36	65	.56	102.22	92.12	132.89
BREED PERCENTILE RANKING PER EPD														
10	40	35	40	20	20	15	55	75	55	25	15	65	15	35
Breed %			50GV 50AN			OWNER:			Mulroy Farms LLC					

Balancer Homo Black Homo Polled **67+**

TMMW Mr Treasure 150L

MGR TREASURE
TAU FORTUNE 8H ET
TAU MS GUNNISON 106R 3147A

DLW TPG PAYIN BILLS 3048C
TMMW MISS PAYIN BILLS 187E
TMMW MISS BISMARCK 143A

REG #:	1591308
BD:	9/22/2023
BW:	77
WW:	669

CE	BW	WW	YW	MK	TM	CEM	ST	DOC	CW	REA	MB	\$C	FPI	EPI
15	0.1	78	133	23	62	9	19	14	49	.34	.38	125.13	85.44	132.51
BREED PERCENTILE RANKING PER EPD														
25	65	30	15	55	40	15	5	15	20	85	50	20	40	35
Breed %			47GV 53AN			OWNER:			Mulroy Farms LLC					

Balancer Homo Black Homo Polled **71+**

RGCC Powercat 3117L

JRI PROBITY 254D28
JGPG PROBITY 138J ET
JGPG BLACKCAP 7216E

TMMW MR MONTANA 176E
RGCC LADY CAT 173J
RGCC LADY CAT 8109F

REG #:	1593827
BD:	9/28/2023
BW:	70
WW:	547

CE	BW	WW	YW	MK	TM	CEM	ST	DOC	CW	REA	MB	\$C	FPI	EPI
18	0.4	89	142	27	71	10	17	14	54	.77	.09	120.13	86.59	145.35
BREED PERCENTILE RANKING PER EPD														
4	70	5	10	20	5	10	20	15	10	10	>95	25	35	25
Breed %			53GV 47AN			OWNER:			RM Cattle					

Balancer Homo Black Homo Polled **68+**

MTB BCC Black Balance 36L

CCRO CAROLINA LEVERAGE 3214A
ERTL BARGAINING CHIP D677
KCS BLACKBIRD 7707

BNG OVERTIME 23Y
MTB BCC MS OVERTIME 64D
JEB BCC MISS BALANCE 40T

REG #:	1593699
BD:	9/25/2023
BW:	76
WW:	536

CE	BW	WW	YW	MK	TM	CEM	ST	DOC	CW	REA	MB	\$C	FPI	EPI
10	0.4	81	125	21	62	6	19	13	40	.72	.53	132.67	90.02	159.44
BREED PERCENTILE RANKING PER EPD														
90	70	20	25	75	40	65	5	30	45	15	20	10	20	15
Breed %			47GV 53AN			OWNER:			Burbank Cattle Company					

Balancer Homo Black Homo Polled **72+**

RDW 360L WTL

BVC MR BALANCE 516E
LSR FLINT HILLS 47H
RLS FOCUS ON GOVERNOR 39Y

BTBR BLACK CROSS HERO 4031
RDW 527E WTL
RDW LADY OF FORTUNE WTL

REG #:	1594257
BD:	9/29/2023
BW:	78
WW:	594

CE	BW	WW	YW	MK	TM	CEM	ST	DOC	CW	REA	MB	\$C	FPI	EPI
11	0.0	68	99	28	62	6	18	12	25	.71	.22	118.71	75.10	112.35
BREED PERCENTILE RANKING PER EPD														
80	60	70	85	15	40	65	10	50	90	20	85	30	90	55
Breed %			52GV 48AN			OWNER:			Rex Wood Farms					

Balancer Homo Black Homo Polled **69+**

TMMW Mr Exponential 162L

K C F BENNETT EXPONENTIAL
DBRG MR EXPONENTIAL 1158J
DBRG MS EXCLUSIVE 5179C ET

TAU MR KRUGERRAND 70M 130P
TMMW MISS KRUGER 184A
TMMW PROMPTER CIMARRON 7712T

REG #:	1591321
BD:	9/27/2023
BW:	73
WW:	666

CE	BW	WW	YW	MK	TM	CEM	ST	DOC	CW	REA	MB	\$C	FPI	EPI
17	-3.2	67	106	22	56	8	15	13	34	.34	.75	102.94	92.37	115.37
BREED PERCENTILE RANKING PER EPD														
10	10	75	70	65	75	30	40	30	65	85	3	60	15	55
Breed %			37GV 63AN			OWNER:			Mulroy Farms LLC					

Balancer Homo Black Homo Polled **73+**

TMGC SB Cactus Jack 292L

BTBR SAGUARO 8111F ET
TMGC SB CACTUS 40J
TMGC SB PEARL 49A

R B TOUR OF DUTY 177
SB PRIDE OF DUTY 8001E
CIRCLE A PRIDE 2274

REG #:	1588065
BD:	9/29/2023
BW:	74
WW:	752

CE	BW	WW	YW	MK	TM	CEM	ST	DOC	CW	REA	MB	\$C	FPI	EPI
14	-1.0	81	130	30	70	8	19	14	56	.32	.46	125.81	90.61	192.45
BREED PERCENTILE RANKING PER EPD														
35	40	20	20	5	10	30	5	15	10	90	30	20	20	3
Breed %			28GV 72AN			OWNER:			Stuecken Bros					

BALANCER BULLS

Balancer Homo Black Homo Polled **74+**
JEB BCC Black Balance 41L

DCH HILLE D453
 GLM HASHTAG# H11
 GLM W55

SCHIEFELBEIN ALLIED 514
 JEB BCC MS ALLIED J111 ET
 JEB BCC MISS BALANCE 62A

REG #:	1593703
BD:	9/30/2023
BW:	76
WW:	579

CE	BW	WW	YW	MK	TM	CEM	ST	DOC	CW	REA	MB	\$C	FPI	EPI
14	0.3	84	130	24	66	8	16	19	49	.50	.31	117.91	86.80	183.96
BREED PERCENTILE RANKING PER EPD														
35	70	15	20	45	20	30	30	1	20	55	65	30	30	4
Breed %		63GV 37AN			OWNER:		Burbank Cattle Company							

Balancer Homo Black Homo Polled **78+**
MTB BCC Black Balance 50L

CCRO CAROLINA LEVERAGE 3214A
 ERTL BARGAINING CHIP D677
 KCS BLACKBIRD 7707

BNG OVERTIME 23Y
 MTB BCC MISS OVERTIME 9E
 JEB BCC MISS BALANCE 40T

REG #:	1593711
BD:	10/8/2023
BW:	76
WW:	679

CE	BW	WW	YW	MK	TM	CEM	ST	DOC	CW	REA	MB	\$C	FPI	EPI
12	2.2	87	130	24	68	7	15	11	52	.71	.56	109.41	92.50	165.57
BREED PERCENTILE RANKING PER EPD														
65	95	10	20	45	15	45	40	75	15	20	15	45	15	10
Breed %		47GV 53AN			OWNER:		Burbank Cattle Company							

Balancer Homo Black Homo Polled **75+**
TMMW Mr Treasure 168L

MGR TREASURE
 TAU FORTUNE 8H ET
 TAU MS GUNNISON 106R 3147A

BTBR BLACK CROSS HERO 4031
 TMMW MISS HERO 218E
 TMMW MISS GRANITE 92Z

REG #:	1591326
BD:	9/30/2023
BW:	77
WW:	633

CE	BW	WW	YW	MK	TM	CEM	ST	DOC	CW	REA	MB	\$C	FPI	EPI
13	0.2	74	122	23	61	10	17	11	43	.63	.29	118.55	81.31	93.54
BREED PERCENTILE RANKING PER EPD														
50	65	45	30	55	45	10	20	75	35	30	70	30	60	75
Breed %		59GV 41AN			OWNER:		Mulroy Farms LLC							

Balancer Homo Black Homo Polled **79+**
RDW 370L

JJNR MR PAYWEIGHT B42E
 JJNR MR WIDELoad B42H
 JJNR MISS DITKA 43YF

JEB BCC CALVIN 31C
 RDW 617F
 RED 383C

REG #:	1594304
BD:	10/9/2023
BW:	80
WW:	626

CE	BW	WW	YW	MK	TM	CEM	ST	DOC	CW	REA	MB	\$C	FPI	EPI
12	-0.9	79	130	20	60	7	15	10	40	.41	.47	107.00	88.23	117.61
BREED PERCENTILE RANKING PER EPD														
65	40	25	20	80	50	45	40	90	45	75	30	55	25	50
Breed %		45GV 55AN			OWNER:		Rex Wood Farms							

Balancer Homo Black Homo Polled **76+**
TMMW Mr Treasure 179L

MGR TREASURE
 TAU FORTUNE 8H ET
 TAU MS GUNNISON 106R 3147A

JGPG TRAEGER 744E
 TMMW MISS TRAEGER 218J
 TMMW MISS NEVADA 13B

REG #:	1591337
BD:	10/4/2023
BW:	70
WW:	754

CE	BW	WW	YW	MK	TM	CEM	ST	DOC	CW	REA	MB	\$C	FPI	EPI
13	1.3	89	141	23	68	9	17	13	40	.23	.53	112.74	93.92	118.99
BREED PERCENTILE RANKING PER EPD														
50	85	5	10	55	15	15	20	30	45	95	20	40	10	50
Breed %		56GV 44AN			OWNER:		Mulroy Farms LLC							

Balancer Black Homo Polled **80+**
GATS Gatson Sam Lamentations 362L

TMMW HOLE IN ONE 93D
 SKF DUNN'S HOLE IN ONE SAM 026G
 SKF DUNNS MISS SAM 719E

BKT BECKTON CLIFFTOP Z500 E4
 BWF BRANDYWINE CARMELA 544C
 BWF BRANDYWINE ANGELA 336A

REG #:	1581181
BD:	10/10/2023
BW:	86
WW:	603

CE	BW	WW	YW	MK	TM	CEM	ST	DOC	CW	REA	MB	\$C	FPI	EPI
12	0.2	73	109	30	66	8	20	8	10	.05	.25	138.77	78.80	137.00
BREED PERCENTILE RANKING PER EPD														
65	65	50	60	5	20	30	3	>95	>95	>95	80	5	75	30
Breed %		75GV 25AR			OWNER:		Gatson Gelbvieh							

Balancer Homo Black Homo Polled **77+**
JEB BCC Black Balance 46L

BTBR SAGUARO 8111F ET
 JEB BCC JACKSMITH J109 ET
 JEB BCC MISS OVERTIME 54C

B C MATRIX 4132
 JEB BCC MISS MATRIX 5A
 ABF 217M

REG #:	1593707
BD:	10/5/2023
BW:	78
WW:	718

CE	BW	WW	YW	MK	TM	CEM	ST	DOC	CW	REA	MB	\$C	FPI	EPI
13	1.9	100	152	24	74	6	21	13	63	.81	.30	142.99	94.52	181.50
BREED PERCENTILE RANKING PER EPD														
50	95	1	2	45	2	65	1	30	3	10	70	3	10	5
Breed %		51GV 47AN 2AR			OWNER:		Burbank Cattle Company							



BALANCER BULLS

Balancer Homo Black Homo Polled **81+**
JEB BCC Black Balance 55L

CCRO CAROLINA LEVERAGE 3214A
 ERTL BARGAINING CHIP D677
 KCS BLACKBIRD 7707

MTB BCC PEDRO 6A
 JEB BCC MS PEDRO 21G
 JEB BCC MISS BALANCE 39A

REG #:	1593716
BD:	10/12/2023
BW:	72
WW:	540

CE	BW	WW	YW	MK	TM	CEM	ST	DOC	CW	REA	MB	\$C	FPI	EPI
13	1.3	77	121	24	62	9	13	11	46	.48	.57	99.48	87.70	158.14
BREED PERCENTILE RANKING PER EPD														
50	85	35	35	45	40	15	70	75	25	60	15	70	30	15
Breed %	44GV 56AN		OWNER:		Burbank Cattle Company									

Balancer Black Homo Polled **84+**
JGPG Cactus 3235L

BTBR SAGUARO 8111F ET
 TMGC SB CACTUS 27H
 TMGC SB DANIELLE 07C

JRI PROBITY 254D28
 JGPG LADY GRANITE 321A 0216H ET
 JGPG LADY GRANITE 321A ET

REG #:	1591775
BD:	10/16/2023
BW:	68
WW:	715

CE	BW	WW	YW	MK	TM	CEM	ST	DOC	CW	REA	MB	\$C	FPI	EPI
14	0.2	74	119	23	60	8	22	12	27	.05	.44	141.35	83.82	135.34
BREED PERCENTILE RANKING PER EPD														
35	65	45	40	55	50	30	1	50	85	>95	35	4	45	35
Breed %	58GV 42AN		OWNER:		JGP Gelbvieh									

Balancer Homo Black Homo Polled **82+**
RDW 376L

BVC MR BALANCE 516E
 LSR FLINT HILLS 47H
 RLS FOCUS ON GOVERNOR 39Y

BTBR BLACK CROSS HERO 4031
 RDW 529E
 RDW 346C

REG #:	1594265
BD:	10/13/2023
BW:	70
WW:	708

CE	BW	WW	YW	MK	TM	CEM	ST	DOC	CW	REA	MB	\$C	FPI	EPI
12	-1.3	69	108	31	66	7	18	14	31	.75	.16	120.75	77.36	121.63
BREED PERCENTILE RANKING PER EPD														
65	35	65	65	3	20	45	10	15	75	15	95	25	80	45
Breed %	50GV 50AN		OWNER:		Rex Wood Farms									

Balancer Homo Black Homo Polled **85+**
TMMW Mr Exponential 195L

K C F BENNETT EXPONENTIAL
 DBRG MR EXPONENTIAL 1158J
 DBRG MS EXCLUSIVE 5179C ET

STG MR MEDINA 51Y14
 TMMW MISS MIF 150B
 TMMW MARJORIE UP LIMIT 7173T

REG #:	1605690
BD:	10/20/2023
BW:	72
WW:	721

CE	BW	WW	YW	MK	TM	CEM	ST	DOC	CW	REA	MB	\$C	FPI	EPI
18	-1.7	75	127	24	62	9	20	11	53	.41	.48	130.18	89.80	156.41
BREED PERCENTILE RANKING PER EPD														
4	25	40	25	45	40	15	3	75	10	75	25	15	20	15
Breed %	50GV 50AN		OWNER:		Mulroy Farms LLC									

Balancer Homo Black Homo Polled **83+**
JGPG Probity 3232L

JRI PROBITY 254D28
 MART JGPG MISS ELLIJAY 4210B
 MART HALLE 620D

JCGR BAR GT CROSS FIRE500W ET
 MART JGPG MISS ELLIJAY 4210B
 MART JGPG MISS ELLIJAY 2114Z

REG #:	1591773
BD:	10/16/2023
BW:	78
WW:	689

CE	BW	WW	YW	MK	TM	CEM	ST	DOC	CW	REA	MB	\$C	FPI	EPI
10	2.2	76	112	21	59	4	12	11	37	.20	.03	79.77	70.34	125.16
BREED PERCENTILE RANKING PER EPD														
90	95	35	55	75	95	85	75	55	>95	>95	95	>95	45	
Breed %	46GV 54AN		OWNER:		JGP Gelbvieh									

Balancer Black Homo Polled **86+**
HCRX Joshua 193L

TMGC SB ARNOLD 225W
 HCRX SAMSON 140H
 DJBG DARLINGTON 022X

VRT LAZY TV WATCHMAN W021
 CVBG ASHLAND 077C
 CVBG CASEY JR 010W

REG #:	1581986
BD:	10/25/2023
BW:	80
WW:	646

CE	BW	WW	YW	MK	TM	CEM	ST	DOC	CW	REA	MB	\$C	FPI	EPI
12	0.1	68	111	20	54	5	10	14	35	.47	.38	87.55	79.53	108.03
BREED PERCENTILE RANKING PER EPD														
65	65	70	60	80	85	80	95	15	60	60	50	90	70	60
Breed %	66GV 34AN		OWNER:		Hebron Christian Ranch									



Balancer Homo Black Homo Polled **87+**
KZC L219

SPFR 204Z
 KZC E71
 ABF 2207Z

SFGC FORTUNE HAWK 534C
 KZC F198
 KZC D141

REG #:	1612239
BD:	10/31/2023
BW:	72
WW:	708

CE	BW	WW	YW	MK	TM	CEM	ST	DOC	CW	REA	MB	\$C	FPI	EPI
15	0.7	82	125	28	69	8	12	12	49	1.15	.21	90.49	84.86	178.01
BREED PERCENTILE RANKING PER EPD														
25	75	20	25	15	10	30	85	50	20	1	85	85	40	5
Breed %	75GV 25AN		OWNER:		KZC Cattle Company									

BALANCER BULLS

Balancer Homo Black Homo Polled **88+**
KZC L199

SPFR 204Z
 KZC E71
 ABF 2207Z

TMGC SB GIBRALTOR 37B
 TMGC SB MS GIBRALTER 160D
 TMGC SB SUNSETS FOCUS 255Z

REG #:	1612222
BD:	11/3/2023
BW:	80
WW:	687

CE	BW	WW	YW	MK	TM	CEM	ST	DOC	CW	REA	MB	\$C	FPI	EPI
10	3.2	80	120	27	67	5	10	12	40	.58	.33	73.88	81.24	176.70
BREED PERCENTILE RANKING PER EPD														
90	>95	25	35	20	15	80	95	50	45	40	60	>95	60	10
Breed %		72GV 28AN			OWNER:			KZ Cattle Company						



Balancer Homo Black Homo Polled **89+**
JEB BCC Black Balance 77L

BTBR SAGUARO 8111F ET
 JEB BCC JACKSMITH J109 ET
 JEB BCC MISS OVERTIME 54C

BTBR NEVADA 1170Y
 JEB BCC MISS NEVADA 89C
 JEB BCC MISS BALANCE 62A

REG #:	1593738
BD:	11/7/2023
BW:	74
WW:	624

CE	BW	WW	YW	MK	TM	CEM	ST	DOC	CW	REA	MB	\$C	FPI	EPI
10	2.1	93	152	20	66	6	17	12	57	.45	.56	121.77	95.69	195.08
BREED PERCENTILE RANKING PER EPD														
90	95	2	2	80	20	65	20	50	10	65	15	25	10	2
Breed %		51GV 47AN 2AR			OWNER:			Burbank Cattle Company						

Balancer Homo Black Homo Polled **92+**
CHMB BCC Black Balance 91L

BTBR SAGUARO 8111F ET
 JEB BCC JACKSMITH J109 ET
 JEB BCC MISS OVERTIME 54C

ERTL BARGAINING CHIP D677
 MTB BCC MS CHIPPIE 46F
 BWF BRANDYWINE BIDELIA 4123B

REG #:	1593750
BD:	11/19/2023
BW:	74
WW:	751

CE	BW	WW	YW	MK	TM	CEM	ST	DOC	CW	REA	MB	\$C	FPI	EPI
14	1.3	99	154	24	74	7	15	11	55	.69	.56	115.96	101.39	194.74
BREED PERCENTILE RANKING PER EPD														
35	85	1	2	45	2	45	40	75	10	20	15	35	2	2
Breed %		62GV 36AN 2AR			OWNER:			Burbank Cattle Company						

Balancer Homo Black Homo Polled **90+**
JEB BCC Black Balance 78L

CCRO CAROLINA LEVERAGE 3214A
 ERTL BARGAINING CHIP D677
 KCS BLACKBIRD 7707

DLW WARNER 0152C
 JGPG VELVET 7203E 9246G
 JGPG VELVET 7203E

REG #:	1593739
BD:	11/7/2023
BW:	72
WW:	715

CE	BW	WW	YW	MK	TM	CEM	ST	DOC	CW	REA	MB	\$C	FPI	EPI
10	0.9	86	130	30	73	5	16	15	50	.60	.69	112.70	96.11	167.21
BREED PERCENTILE RANKING PER EPD														
90	80	10	20	5	3	80	30	5	15	35	5	40	10	10
Breed %		45GV 55AN			OWNER:			Burbank Cattle Company						

Balancer Homo Black Homo Polled **93+**
TMMW Mr Overtime 211L

BTBR SAGUARO 8111F ET
 JEB BCC BLACK BALANCE J101 ET
 JEB BCC MISS OVERTIME 54C

DJZ FINAL ANSWER 8E
 TMMW MISS FINAL ANSWER 158H
 TMMW MISS BISMARCK 61B

REG #:	1591371
BD:	11/30/2023
BW:	73
WW:	881

CE	BW	WW	YW	MK	TM	CEM	ST	DOC	CW	REA	MB	\$C	FPI	EPI
14	1.0	86	129	25	68	9	21	10	50	.61	.27	144.02	86.35	138.64
BREED PERCENTILE RANKING PER EPD														
35	85	10	20	35	15	15	1	90	15	35	75	3	35	30
Breed %		51GV 47AN 2AR			OWNER:			Mulroy Farms LLC						

Balancer Homo Black Homo Polled **91+**
HCRX Frost 195L

TMGC SB ARNOLD 225W
 HCRX SAMSON 140H
 DJBG DARLINGTON 022X

VRT LAZY TV WATCHMAN W021
 CKB MAELYN 068B
 MMGG 83T

REG #:	1584059
BD:	11/9/2023
BW:	75
WW:	698

CE	BW	WW	YW	MK	TM	CEM	ST	DOC	CW	REA	MB	\$C	FPI	EPI
15	-2.5	58	84	24	52	6	12	9	35	.50	.50	91.78	79.30	74.82
BREED PERCENTILE RANKING PER EPD														
25	15	95	>95	45	90	65	85	95	60	55	25	85	70	90
Breed %		72GV 28AN			OWNER:			Hebron Christian Ranch						

Balancer Homo Black Homo Polled **94+**
JGPG Cactus 3250L

BTBR SAGUARO 8111F ET
 TMGC SB CACTUS 27H
 TMGC SB DANIELLE 07C

DLW SAND TRAP ET
 JGPG EMMA 275Z 9215G
 JGPG EMMA 275Z

REG #:	1591790
BD:	12/3/2023
BW:	68
WW:	721

CE	BW	WW	YW	MK	TM	CEM	ST	DOC	CW	REA	MB	\$C	FPI	EPI
15	-0.3	76	121	25	63	10	20	12	40	.38	.56	132.63	89.52	120.99
BREED PERCENTILE RANKING PER EPD														
25	55	35	35	35	35	10	3	50	45	80	15	10	20	45
Breed %		58GV 42AN			OWNER:			JGP Gelbvieh						

77% Gelbvieh Black Homo Polled

95+

CCFM 364L

TMGC SB FORMULA 12E
TMGC SB DCN REVOLUTION 287G
TMGC 213X

CTR GOOD NIGHT 1624Y
CCFM 404B
CCFM 011X

REG #:	1608349
BD:	8/24/2023
BW:	84
WW:	608

CE	BW	WW	YW	MK	TM	CEM	ST	DOC	CW	REA	MB	\$C	FPI	EPI
10	3.1	82	111	19	60	4	11	14	46	.87	.52	90.18	86.08	125.37
BREED PERCENTILE RANKING PER EPD														
85	>95	15	50	85	45	90	90	15	20	10	15	90	25	30
Breed %			77GV 18AN 5XX	OWNER:		Chapuis Cattle Farm								

81% Gelbvieh Homo Black Homo Polled

97+

GATS Gatson Sam Lug 320L

TMMW HOLE IN ONE 93D
SKF DUNN'S HOLE IN ONE SAM 026G
SKF DUNNS MISS SAM 719E

TMMW MR MEDINA 21C
KDCM CKC MS BALANCE 117E
JKAR RITA 0229Z

REG #:	1578467
BD:	9/7/2023
BW:	91
WW:	688

CE	BW	WW	YW	MK	TM	CEM	ST	DOC	CW	REA	MB	\$C	FPI	EPI
10	1.3	81	124	32	72	5	19	14	33	.54	.45	133.09	87.54	152.68
BREED PERCENTILE RANKING PER EPD														
85	85	20	20	1	3	80	10	15	55	55	25	15	20	15
Breed %			81GV 19AN	OWNER:		Gatson Gelbvieh								

78% Gelbvieh Homo Black Homo Polled

96+

WNBE 328L

CCRO CAROLINA LEVERAGE 3214A
DCH HILLE STOCK OPTIONS D410
DCH HILLE B189 ET

WNBE 447B
WNBE 128J
WNBE 530C

REG #:	1577991
BD:	8/28/2023
BW:	70
WW:	648

CE	BW	WW	YW	MK	TM	CEM	ST	DOC	CW	REA	MB	\$C	FPI	EPI
14	-1.2	83	125	25	66	8	21	16	38	.66	.40	142.82	90.66	127.56
BREED PERCENTILE RANKING PER EPD														
35	30	15	20	35	15	25	2	2	40	35	35	5	15	30
Breed %			78GV 22AN	OWNER:		Wannabe Stock Farm								

81% Gelbvieh Homo Black Homo Polled

98+

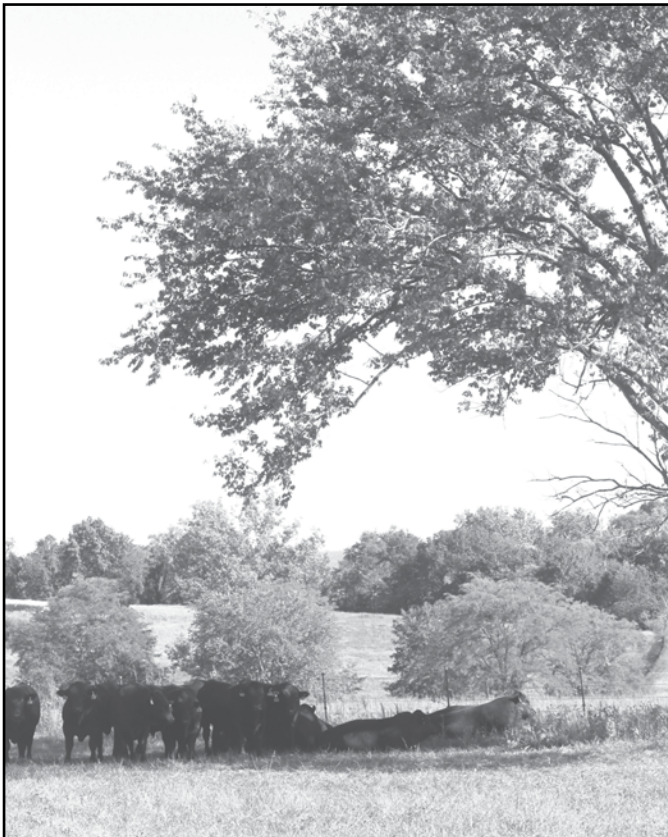
RUR Saquaro Sam 868L

TMMW DESTINATION 82Y
BTBR SAGUARO 8111F ET
JEB BCC MISS OBJECTIVE 41W

TMMW GOVENORS MR IDEAL 216X
RUR ROSALITA 868H
RUR GRANITE ROCKY 868X

REG #:	1592578
BD:	9/7/2023
BW:	73
WW:	584

CE	BW	WW	YW	MK	TM	CEM	ST	DOC	CW	REA	MB	\$C	FPI	EPI
14	-2.5	72	105	21	57	9	21	10	16	.37	.27	144.18	81.43	89.68
BREED PERCENTILE RANKING PER EPD														
35	15	50	65	70	65	15	2	85	95	85	60	4	50	65
Breed %			81GV 19AN	OWNER:		Rockin'-U-Ranch								



81% Gelbvieh Homo Black Homo Polled

99+

RUR Cactus King D206L

TMMW DESTINATION 82Y
BTBR SAGUARO 8111F ET
JEB BCC MISS OBJECTIVE 41W

DLW ALUMNI 7513A ET
DMP H206
DMP C509

REG #:	1592579
BD:	9/13/2023
BW:	70
WW:	613

CE	BW	WW	YW	MK	TM	CEM	ST	DOC	CW	REA	MB	\$C	FPI	EPI
13	-2.2	71	108	22	57	8	19	13	34	.41	.49	129.25	85.90	111.13
BREED PERCENTILE RANKING PER EPD														
50	15	55	55	60	65	25	10	25	50	80	20	20	30	45
Breed %			81GV 19AN	OWNER:		Rockin'-U-Ranch								

Genomic-Enhanced EPDs
All of the bulls in the Seedstock Plus Program are DNA tested to be able to provide the most accurate, DNA -Enhanced EPDs as part of our commitment to bring you the best data so you can make the most informed decision and get the best bull for your program. Let us know if you need any help understanding any of the data.

About Gelbvieh Bulls

Each of the Gelbvieh bulls is listed separately in the catalog with their own individual performance and pedigree information. They are all registered with the American Gelbvieh Association. The EPD's are the most current provided by the Gelbvieh Assoc.

The Average EPD's for Gelbvieh bulls as of 1/7/25:
 CE:13 BW: 0.0 WW: 71 YW: 105 MK: 23 TM: 58
 CEM: 7 ST: 16 DOC: 12 CW: 29 REA: 0.67
 MB: 0.22 \$C: 116.56 FPI: 77.24 EPI: 84.63

PB Gelbvieh Homo Black Homo Polled 103- GMF 343L

CCRO CAROLINA LEVERAGE 3214A
 WAHL 004H ET
 FHG FLYING H MS LEGACY 48Y
 JKGK FINAL FRONTIER C95
 GMF MENG 97G
 GMF MENG 26Z

REG #:	1585503
BD:	8/6/2023
BW:	80
WW:	666

CE	BW	WW	YW	MK	TM	CEM	ST	DOC	CW	REA	MB	\$C	FPI	EPI
11	-0.7	67	100	33	66	7	18	13	25	.64	.47	136.92	82.48	80.30
BREED PERCENTILE RANKING PER EPD														
75	35	65	65	1	15	35	20	25	65	60	10	15	25	60
Breed %		94GV 6AN			OWNER:					Meng Farms Cattle Company				

PB Gelbvieh Homo Black Homo Polled 100- GMF 329L

CCRO CAROLINA LEVERAGE 3214A
 WAHL 004H ET
 FHG FLYING H MS LEGACY 48Y
 TMMW HOLE IN ONE 93D
 GMF MENG 01H
 GMF MENG 636D

REG #:	1585463
BD:	7/28/2023
BW:	86
WW:	657

CE	BW	WW	YW	MK	TM	CEM	ST	DOC	CW	REA	MB	\$C	FPI	EPI
10	0.1	76	116	31	69	7	24	9	29	.39	.54	169.76	87.88	114.55
BREED PERCENTILE RANKING PER EPD														
85	50	25	25	2	5	35	1	95	50	95	3	1	10	20
Breed %		94GV 6AN			OWNER:					Meng Farms Cattle Company				

PB Gelbvieh Homo Black Homo Polled 104- NORG Big Whiskey L5

VRT LAZY TV SAM U451
 PROB NORG BIG WHISKEY 12H
 PROB MISS JUSTICE 317F
 HIGH MR FOUNDATION 9D83
 MDR GREATA G34
 MDR E34

REG #:	1582077
BD:	8/17/2023
BW:	76
WW:	657

CE	BW	WW	YW	MK	TM	CEM	ST	DOC	CW	REA	MB	\$C	FPI	EPI
14	-1.2	68	101	28	62	7	21	15	18	.57	.34		80.91	
BREED PERCENTILE RANKING PER EPD														
30	25	60	60	10	30	35	2	4	90	75	20		30	
Breed %		91GV 9AN			OWNER:					Norwood Gelbvieh				

PB Gelbvieh Homo Black Homo Polled 101- GMF 337L

CCRO CAROLINA LEVERAGE 3214A
 WAHL 004H ET
 FHG FLYING H MS LEGACY 48Y
 CTR HIGHLIGHT 066K
 GMF MENG 860F
 DDN BELLY RIVER ZENDI 286Z

REG #:	1585495
BD:	8/1/2023
BW:	89
WW:	632

CE	BW	WW	YW	MK	TM	CEM	ST	DOC	CW	REA	MB	\$C	FPI	EPI
8	2.7	89	133	27	72	6	16	14	47	.73	.55	124.03	92.26	99.04
BREED PERCENTILE RANKING PER EPD														
>95	>95	2	4	15	2	55	45	10	4	40	2	40	2	35
Breed %		94GV 6AN			OWNER:					Meng Farms Cattle Company				

PB Gelbvieh Homo Black Homo Polled 105- GATS Gatson # Larry Boy 307L

DCH HILLE D453
 GLM HASHTAG # H11
 GLM W55
 JNCC DIRECT DRIVE 590C
 GAT'S GATSON DIR DR JUNE BUG 101J
 GAT'S GATSON HOLE GABRIELLA 935G

REG #:	1578113
BD:	9/2/2023
BW:	48
WW:	524

CE	BW	WW	YW	MK	TM	CEM	ST	DOC	CW	REA	MB	\$C	FPI	EPI
19	-2.9	72	113	24	59	11	21	16	34	.53	.38	147.47	87.55	144.19
BREED PERCENTILE RANKING PER EPD														
1	4	45	30	40	50	1	2	2	30	80	15	5	10	3
Breed %		88GV 12AN			OWNER:					Gatson Gelbvieh				

PB Gelbvieh Homo Black Homo Polled 102- GMF 338L

CCRO CAROLINA LEVERAGE 3214A
 WAHL 004H ET
 FHG FLYING H MS LEGACY 48Y
 RWG TRACTION 7412
 GMF MENG 57C
 FLAD FLADELAND BLACK PEARL 79Z

REG #:	1585488
BD:	8/1/2023
BW:	82
WW:	723

CE	BW	WW	YW	MK	TM	CEM	ST	DOC	CW	REA	MB	\$C	FPI	EPI
12	0.7	82	131	32	73	7	19	17	50	.77	.31	138.07	86.43	97.45
BREED PERCENTILE RANKING PER EPD														
60	70	10	4	1	2	35	10	1	2	30	25	15	10	35
Breed %		94GV 6AN			OWNER:					Meng Farms Cattle Company				



GELBVIEW BULLS

PB Gelbvieh Black Homo Polled **106**
GMF 357L ET

CCRO CAROLINA LEVERAGE 3214A
 JKGf CHIEF JUSTICE C205
 KCF MISS FORTUNE U490

MCCA CORNHUSKER RED 542C
 MCCA FEBE 815F
 MCCA BEBE 4015B

REG #:	1593378
BD:	9/2/2023
BW:	ET
WW:	ET

CE	BW	WW	YW	MK	TM	CEM	ST	DOC	CW	REA	MB	\$C	FPI	EPI
17	-2.3	75	112	24	62	10	21	16	13	.31	.58		92.27	
BREED PERCENTILE RANKING PER EPD														
5	10	30	35	40	30	3	2	2	95	>95	2		2	
Breed %		94GV 6AN			OWNER:		Meng Farms Cattle Company							

PB Gelbvieh Homo Black Homo Polled **109**
GATS Gatson # Lindbergh 311L

DCH HILLE D453
 GLM HASHTAG# H11
 GLM W55

JNCC DIRECT DRIVE 590C
 GAT'S GATSON DIR DR JOSIE 141J
 GAT'S GATSON ZORRO'S CLIO 540C

REG #:	1578270
BD:	9/3/2023
BW:	68
WW:	530

CE	BW	WW	YW	MK	TM	CEM	ST	DOC	CW	REA	MB	\$C	FPI	EPI
16	-1.3	72	109	23	58	10	17	16	44	.65	.29	122.23	82.19	127.47
BREED PERCENTILE RANKING PER EPD														
10	20	45	40	50	55	3	30	2	10	55	30	45	25	10
Breed %		88GV 12AN			OWNER:		Gatson Gelbvieh							

PB Gelbvieh Black Homo Polled **107**
GMF 359L ET

JRI POP A TOP 197T83
 JRI GENERAL PATTON 213B97 ET
 JRI MS EXTRAVAGANT 213T87

MCCA CORNHUSKER RED 542C
 MCCA FEBE 815F
 MCCA BEBE 4015B

REG #:	1593395
BD:	9/2/2023
BW:	ET
WW:	ET

CE	BW	WW	YW	MK	TM	CEM	ST	DOC	CW	REA	MB	\$C	FPI	EPI
17	-1.2	76	112	24	62	8	8	12	22	.43	.25		83.71	
BREED PERCENTILE RANKING PER EPD														
5	25	25	35	40	30	20	>95	45	80	90	40		20	
Breed %		94GV 6AN			OWNER:		Meng Farms Cattle Company							

PB Gelbvieh Homo Black Polled **110**
GATS Gatson # Latigo 331L

DCH HILLE D453
 GLM HASHTAG# H11
 GLM W55

BWF BRANDYWINE ZORRO 275Z
 GAT'S GATSON ZORRO'S CLIO 540C
 GAT'S GATSON ZIPPY 209Z ET

REG #:	1578686
BD:	9/11/2023
BW:	74
WW:	626

CE	BW	WW	YW	MK	TM	CEM	ST	DOC	CW	REA	MB	\$C	FPI	EPI
16	0.0	72	105	26	62	9	24	14	26	.68	.14	161.14	77.27	115.52
BREED PERCENTILE RANKING PER EPD														
10	50	45	50	25	30	10	1	10	65	50	70	1	50	20
Breed %		99.9GV			OWNER:		Gatson Gelbvieh							

PB Gelbvieh Black Homo Polled **108**
CCFM 377L

TMGC SB GOOD BUSINESS 143B
 CCFM 164J ET
 CCFM 404B

CTR JACKPOT 6C ET
 CCFM 960G
 CCFM 651D

REG #:	1608351
BD:	9/3/2023
BW:	73
WW:	628

CE	BW	WW	YW	MK	TM	CEM	ST	DOC	CW	REA	MB	\$C	FPI	EPI
13	0.0	70	99	26	61	7	17	14	44	.82	.13	119.04	74.50	50.45
BREED PERCENTILE RANKING PER EPD														
45	50	55	65	25	35	35	30	10	10	20	75	50	65	90
Breed %		87GV 6AN 7XX			OWNER:		Chapuis Cattle Farm							

PB Gelbvieh Homo Black Homo Polled **111**
WNBE 331L

CCRO CAROLINA LEVERAGE 3214A
 DCH HILLE STOCK OPTIONS D410
 DCH HILLE B189 ET

VRT LAZY TV SAM U451
 WNBE 930G
 DCSF POST ROCK TWILA 167A8

REG #:	1578929
BD:	9/12/2023
BW:	70
WW:	632

CE	BW	WW	YW	MK	TM	CEM	ST	DOC	CW	REA	MB	\$C	FPI	EPI
15	-2.1	78	116	28	66	8	22	13	49	1.03	.27	160.72	86.67	107.62
BREED PERCENTILE RANKING PER EPD														
20	10	20	25	10	15	20	1	25	3	3	35	1	10	25
Breed %		88GV 12AN			OWNER:		Wannabe Stock Farm							



PB Gelbvieh Homo Black Homo Polled **112**
DRGF 334L

DDGR RESILIENT 275D
 GMF 034H
 GMF MENG 57C

TMMW HOLE IN ONE 93D
 DRGF 8H
 JEB BCC DR MS DESTINY 209E

REG #:	1601585
BD:	9/13/2023
BW:	78
WW:	530

CE	BW	WW	YW	MK	TM	CEM	ST	DOC	CW	REA	MB	\$C	FPI	EPI
12	0.7	76	124	24	62	6	20	17	52	.62	.20	136.50	78.72	134.34
BREED PERCENTILE RANKING PER EPD														
60	70	25	10	40	30	55	5	1	2	65	55	15	45	10
Breed %		95GV 3AN 2AR			OWNER:		Duck River Gelbvieh							

GELBVIEW BULLS

PB Gelbvieh Homo Black Homo Polled **113**
NGCC NG Vision L30

KTGF VISION 289C
 NGCC NG VISION F182
 KCF MISS LANDMARK X182

JOSH PENTAGON 770C
 NGCC NG MOLLY E430
 MLM MISS 430B

REG #:	1581809
BD:	9/14/2023
BW:	73
WW:	546

CE	BW	WW	YW	MK	TM	CEM	ST	DOC	CW	REA	MB	\$C	FPI	EPI
13	0.5	74	109	31	68	7	17	9	34	.51	.29	123.51	81.15	48.51
BREED PERCENTILE RANKING PER EPD														
45	65	35	40	2	10	35	30	95	30	80	30	40	30	90
Breed %	87GV 13AN		OWNER:		Narrow Gate Cattle									



PB Gelbvieh Homo Black Homo Polled **114**
GATS Gatson # Lancer 339L

DCH HILLE D453
 GLM HASHTAG# H11
 GLM W55

BWF BRANDYWINE ZORRO 275Z
 GATS GATSON ZORRO'S FAITH 850F
 GATS FORTUNE YOLANDA 107Y ET

REG #:	1579157
BD:	9/15/2023
BW:	80
WW:	611

CE	BW	WW	YW	MK	TM	CEM	ST	DOC	CW	REA	MB	\$C	FPI	EPI
11	0.6	74	112	26	63	7	18	15	26	.67	.32	131.79	81.13	129.38
BREED PERCENTILE RANKING PER EPD														
75	65	35	35	25	35	20	4	65	50	25	25	30	10	
Breed %	99.9GV		OWNER:		Gatson Gelbvieh									

PB Gelbvieh Homo Black Homo Polled **117**
DRGF 352L

DDGR RESILIENT 275D
 GMF 034H
 GMF MENG 57C

TMMW HOLE IN ONE 93D
 DRGF 918G
 DRGF 724E

REG #:	1601586
BD:	9/20/2023
BW:	68
WW:	624

CE	BW	WW	YW	MK	TM	CEM	ST	DOC	CW	REA	MB	\$C	FPI	EPI
14	-1.2	73	109	27	63	8	23	15	10	.53	.15	156.85	79.48	111.47
BREED PERCENTILE RANKING PER EPD														
30	25	40	40	15	25	20	1	4	>95	80	70	2	40	20
Breed %	85GV 15AN		OWNER:		Duck River Gelbvieh									

PB Gelbvieh Homo Black Homo Polled **115**
MTB BCC Black Legend 24L

CCRO CAROLINA LEVERAGE 3214A
 DCH HILLE STOCK OPTIONS D410
 DCH HILLE B189 ET

TMMW DESTINATION 82Y
 MTB BCC MISS DESTINATION 64A
 LCBK BCC JADES FORTUNE 11U

REG #:	1593688
BD:	9/18/2023
BW:	76
WW:	639

CE	BW	WW	YW	MK	TM	CEM	ST	DOC	CW	REA	MB	\$C	FPI	EPI
12	1.4	92	141	29	74	6	22	15	46	.92	.29	159.86	90.57	176.77
BREED PERCENTILE RANKING PER EPD														
60	85	1	1	10	1	55	1	4	5	10	30	2	3	1
Breed %	99.9GV		OWNER:		Burbank Cattle Company									

PB Gelbvieh Homo Black Homo Polled **118**
NGCC NG Vision L230

KTGF VISION 289C
 NGCC NG VISION F182
 KCF MISS LANDMARK X182

JOSH CLYDE 770UYE
 NGCC EMMA G23
 NGCC E230

REG #:	1581832
BD:	9/20/2023
BW:	78
WW:	577

CE	BW	WW	YW	MK	TM	CEM	ST	DOC	CW	REA	MB	\$C	FPI	EPI
12	2.0	81	123	29	69	6	10	12	37	.57	.24			81.37
BREED PERCENTILE RANKING PER EPD														
60	90	15	15	10	5	55	>95	45	20	75	45			30
Breed %	91GV 9AN		OWNER:		Narrow Gate Cattle									

PB Gelbvieh Homo Black Homo Polled **116**
DRGF 349L

DDGR RESILIENT 275D
 GMF 034H
 GMF MENG 57C

TMMW DESTINATION 82Y
 DRGF 12H
 JEB BCC JESSIES PRMTIME 70U

REG #:	1601533
BD:	9/19/2023
BW:	68
WW:	629

CE	BW	WW	YW	MK	TM	CEM	ST	DOC	CW	REA	MB	\$C	FPI	EPI
13	1.6	82	130	25	66	8	18	16	38	.52	.54	133.29	90.63	133.78
BREED PERCENTILE RANKING PER EPD														
45	85	10	5	30	15	20	20	2	20	80	3	20	3	10
Breed %	88GV 12AN		OWNER:		Duck River Gelbvieh									

PB Gelbvieh Homo Black Homo Polled **119**
NGCC NG Hedge Fund L372

DCH HILLE STOCK OPTIONS D410
 MTB BCC HEDGE FUND J102 ET
 MTB BCC MISS DESTINATION 64A

VRT LAZY TV SAM U451
 NGCC NG DOLLY D372
 RHFB MS ECTESSA R/H 9371Y

REG #:	1581800
BD:	9/25/2023
BW:	77
WW:	572

CE	BW	WW	YW	MK	TM	CEM	ST	DOC	CW	REA	MB	\$C	FPI	EPI
11	1.1	82	116	31	72	6	17	14	42	1.01	.54	130.17	90.82	113.02
BREED PERCENTILE RANKING PER EPD														
75	75	10	25	2	2	55	30	10	10	3	3	25	3	20
Breed %	90GV 10AN		OWNER:		Narrow Gate Cattle									

GELBVIEW BULLS

PB Gelbvieh Homo Black Homo Polled
TMMW Mr Hole In One 160L

120

KHR 79B
 TMMW HOLE IN ONE 93D
 TMMW BEETHOVENS MISS PRIDE 3A

DCH HILLE STOCK OPTIONS D410
 TMMW MISS STOCK OPTIONS 156G
 TMMW MISS GRANITE 83A

REG #:	1591319
BD:	9/26/2023
BW:	78
WW:	669

CE	BW	WW	YW	MK	TM	CEM	ST	DOC	CW	REA	MB	\$C	FPI	EPI
13	0.9	86	127	28	72	8	22	12	34	.91	.28	161.88	88.32	151.11
BREED PERCENTILE RANKING PER EPD														
45	70	4	10	10	2	20	1	45	30	10	35	1	10	2
Breed %	95GV 5AN		OWNER:		Mulroy Farms LLC									

PB Gelbvieh Homo Black Homo Polled
TMMW Mr Guardian 180L

123

KHR 96D
 KHR 22J
 KHR 967G

DCH HILLE STOCK OPTIONS D410
 TMMW MISS STOCK OPTIONS 236J
 TMMW GRANITES BLK MISSY 91Y

REG #:	1591338
BD:	10/4/2023
BW:	72
WW:	747

CE	BW	WW	YW	MK	TM	CEM	ST	DOC	CW	REA	MB	\$C	FPI	EPI
14	1.5	78	118	26	66	8	16	11	34	1.01	.21		80.92	
BREED PERCENTILE RANKING PER EPD														
30	85	20	20	25	15	20	45	70	30	3	50		30	
Breed %	99.9GV		OWNER:		Mulroy Farms LLC									

PB Gelbvieh Homo Black Homo Polled
DRGF 359L

121

DDGR RESILIENT 275D
 GMF 034H
 GMF MENG 57C

TMMW DESTINATION 82Y
 DRGF 75H
 DRGF 206Z

REG #:	1601576
BD:	9/28/2023
BW:	66
WW:	591

CE	BW	WW	YW	MK	TM	CEM	ST	DOC	CW	REA	MB	\$C	FPI	EPI
14	-0.9	74	118	24	61	8	19	15	18	.77	.25	135.35	82.32	125.03
BREED PERCENTILE RANKING PER EPD														
30	30	35	20	40	35	20	10	4	90	30	40	20	25	10
Breed %	94GV 6AN		OWNER:		Duck River Gelbvieh									

PB Gelbvieh Homo Black Homo Polled
DRGF 370L

124

DDGR RESILIENT 275D
 GMF 034H
 GMF MENG 57C

TMMW HOLE IN ONE 93D
 DRGF 920G
 DRGF 748E

REG #:	1601589
BD:	10/12/2023
BW:	65
WW:	629

CE	BW	WW	YW	MK	TM	CEM	ST	DOC	CW	REA	MB	\$C	FPI	EPI
13	-1.2	72	108	25	61	8	20	13	35	.81	.29	140.83	81.92	119.93
BREED PERCENTILE RANKING PER EPD														
45	25	45	45	30	35	20	5	25	30	25	30	10	25	15
Breed %	91GV 9AN		OWNER:		Duck River Gelbvieh									

PB Gelbvieh Black Homo Polled
LAW Chrome Pon 352L

122

MILR TRAILS END D64
 VJQM VV'S CHRONIC 689J
 GGRR GILLYS CAMILLA D689

SKF DUNNS REGULAR BUSINESS 149F
 LAW MARK PONYNESS 042H
 LAW MARK PONYNETT 6084D

REG #:	1582402
BD:	10/4/2023
BW:	65
WW:	730

CE	BW	WW	YW	MK	TM	CEM	ST	DOC	CW	REA	MB	\$C	FPI	EPI
14	-3.1	63	93	23	55	10	15	15	18	.22	.37	111.24	79.58	64.96
BREED PERCENTILE RANKING PER EPD														
30	3	85	80	50	70	3	60	4	90	>95	15	65	40	75
Breed %	88GV 12AN		OWNER:		Lawman Farms									

PB Gelbvieh Homo Black Homo Polled
RUR Carolina King 220L

125

DCH HILLE STOCK OPTIONS D410
 TMMW MR STOCK OPTIONS 270F
 TMMW GRANITES BLK MISSY 91Y

JKGF CHIEF JUSTICE C205
 RUR QUEENIE 20G
 RUR RIGHT GIRL 20Y

REG #:	1592581
BD:	10/18/2023
BW:	75
WW:	651

CE	BW	WW	YW	MK	TM	CEM	ST	DOC	CW	REA	MB	\$C	FPI	EPI
13	-0.2	86	129	26	69	7	18	14	42	1.20	.45	137.51	93.72	111.13
BREED PERCENTILE RANKING PER EPD														
45	45	4	10	25	5	35	20	10	10	1	10	15	1	20
Breed %	88GV 12AN		OWNER:		Rockin'-U-Ranch									



PB Gelbvieh Homo Black Homo Polled
GATS Gatson Jo Lemony Snicket 369L

126

DLW TPG FRONTRUNNER 2510F
 TJB TAYD 579C FRONTRUNNER J081 ET
 TJB ANISSA 921U 579C ET

DCH HILLE STOCK OPTIONS D410
 GATS GATSON STK OPT HADASSAH 035H
 GATS GATSON ZORRO'S CECELIA 534C

REG #:	1581975
BD:	10/23/2023
BW:	76
WW:	556

CE	BW	WW	YW	MK	TM	CEM	ST	DOC	CW	REA	MB	\$C	FPI	EPI
13	0.9	77	116	24	62	7	20	12	29	.71	.41	149.82	85.32	98.32
BREED PERCENTILE RANKING PER EPD														
45	70	25	25	40	30	35	5	45	50	45	10	4	15	35
Breed %	91GV 9AN		OWNER:		Gatson Gelbvieh									

GELBVIEW BULLS

PB Gelbvieh Homo Black Homo Polled **127**
JEB BCC Black Levi 66L

DCH HILLE D453
 GLM HASHTAG# H11
 GLM W55

GDW SHOGUN 8155U
 JEB DR BCC MISS SHOGUN 208Z
 JEB BCC MISS BALANCE 38R

REG #:	1593727
BD:	10/24/2023
BW:	74
WW:	597

CE	BW	WW	YW	MK	TM	CEM	ST	DOC	CW	REA	MB	\$C	FPI	EPI
14	0.1	56	94	28	56	8	18	14	22	.64	.23	121.44	70.07	167.90
BREED PERCENTILE RANKING PER EPD														
30	50	>95	80	10	65	20	20	10	80	60	45	45	90	1
Breed %		94GV 6AN			OWNER:		Burbank Cattle Company							

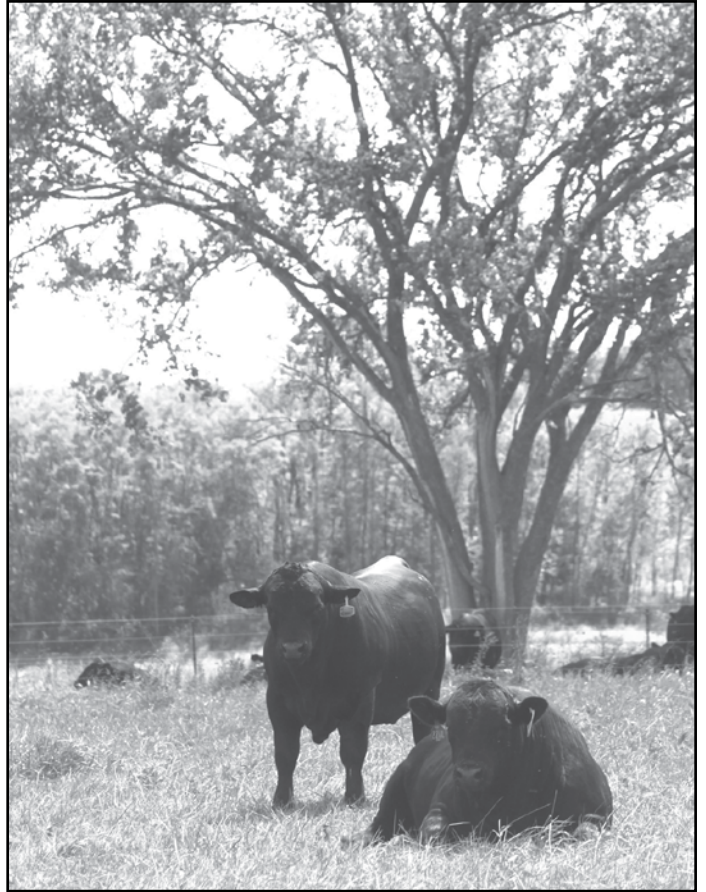
PB Gelbvieh Homo Black Homo Polled **128**
TMMW Mr Stock Options 196L

CCRO CAROLINA LEVERAGE 3214A
 DCH HILLE STOCK OPTIONS D410
 DCH HILLE B189 ET

TMMW HOLE IN ONE 93D
 TMMW MISS HOLE IN ONE 221F
 TMMW GOVENORS MISS CPR 299X

REG #:	1591358
BD:	10/24/2023
BW:	84
WW:	876

CE	BW	WW	YW	MK	TM	CEM	ST	DOC	CW	REA	MB	\$C	FPI	EPI
10	0.7	81	118	30	70	6	25	14	30	.83	.08	173.99	79.26	133.34
BREED PERCENTILE RANKING PER EPD														
85	70	15	20	3	3	55	1	10	45	20	85	1	40	10
Breed %		99.9GV			OWNER:		Mulroy Farms LLC							



PB Gelbvieh Homo Black Homo Polled **129**
LAW Made For Business 362L

TMGC SB GOOD BUSINESS 143B
 SKF DUNN'S REGULAR BUSINESS 149F
 SLF DUNNS MISS GOVENOR 136Y

BWF BRANDYWINE CADET 515C
 LAW MARK MADET 806F
 LAW MARK MADESTE 4045B

REG #:	1582975
BD:	11/2/2023
BW:	90
WW:	711

CE	BW	WW	YW	MK	TM	CEM	ST	DOC	CW	REA	MB	\$C	FPI	EPI
7	2.3	72	114	25	60	4	18	14	29	.52	.36	126.93	77.36	94.75
BREED PERCENTILE RANKING PER EPD														
>95	95	45	30	30	40	90	20	10	50	80	20	35	50	40
Breed %		88GV 9AN 3SM			OWNER:		Lawman Farms							



PB Gelbvieh Homo Black Homo Polled **130**
GATS Gatson Sam Leprechaun 371L

TMMW HOLE IN ONE 93D
 SKF DUNN'S HOLE IN ONE SAM 026G
 SKF DUNNS MISS SAM 719E

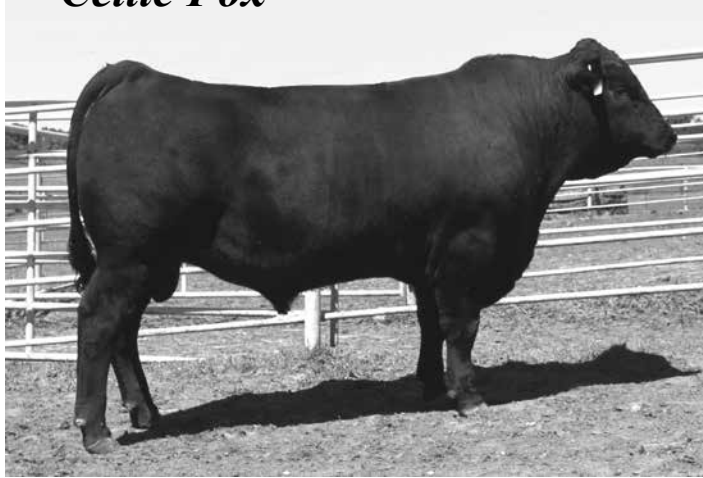
JNCC DIRECT DRIVE 590C
 GATS GATSON DIRECT FUZZ 806F
 GATS GATSON ZORRO'S DAISY 628D

REG #:	1583470
BD:	11/3/2023
BW:	77
WW:	615

CE	BW	WW	YW	MK	TM	CEM	ST	DOC	CW	REA	MB	\$C	FPI	EPI
16	-2.1	68	107	26	60	10	25	9	24	.38	.38	169.39	83.71	118.47
BREED PERCENTILE RANKING PER EPD														
10	10	60	45	25	40	3	1	95	70	95	15	1	20	15
Breed %		88GV 12AN			OWNER:		Gatson Gelbvieh							

Seedstock Plus Genetics has exciting new options for your AI needs!

‘Celtic Fox’



AMGV: 1572714 Homo Black / Homo Polled 50GV 50AN

CE	BW	WW	YW	MK	TM	CEM	ST	DOC	CW	REA	MB	\$C	FPI	EPI
16	-1.8	76	127	29	67	9	16	14	32	.68	.83	116	100	225
BREED PERCENTILE RANKING PER EPD														
15	25	35	25	10	15	15	30	15	65	20	1	35	3	1

This promising young sire has so much going for him! Top 15% calving ease with a top 25% YW performance! Top 1% Marbling & EPI! He posted a 4.88 IMF with a 117 ratio while gaining 4.29# / day! His RFI score during that time is a -1.85 / ranking him 12th in a group of 63 bulls. His exceptional temperament, structure and actual data make him a ‘must sample’ herd sire! Already being used in commercial heifer programs as well as registered herds!

‘Dollar Sign’ (photo coming!)

AMGV: 1573586 Homo Black / Homo Polled 63GV 37AN

CE	BW	WW	YW	MK	TM	CEM	ST	DOC	CW	REA	MB	\$C	FPI	EPI
13	-0.7	84	135	25	69	9	14	14	48	.79	.58	107	96	120
BREED PERCENTILE RANKING PER EPD														
50	45	15	15	35	10	15	55	15	20	10	15	55	10	50

‘Mr Exponential’ (photo coming!)

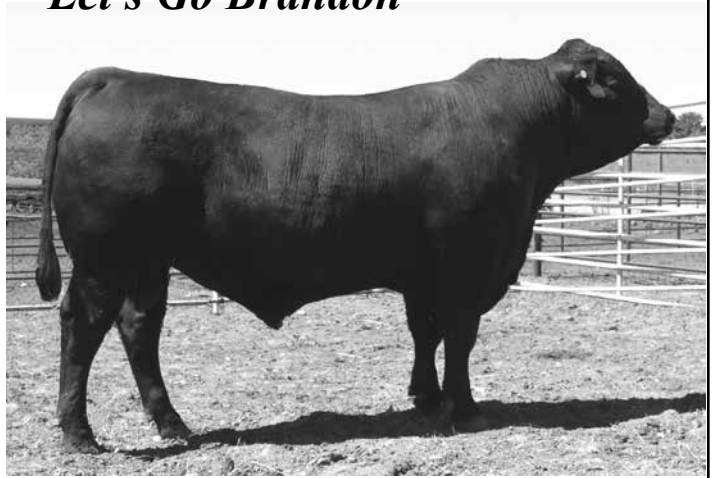
AMGV: 1576740 Homo Black / Homo Polled 52GV 48AN

CE	BW	WW	YW	MK	TM	CEM	ST	DOC	CW	REA	MB	\$C	FPI	EPI
19	-1.4	77	129	22	61	11	15	16	46	.70	.71	111	97	147
BREED PERCENTILE RANKING PER EPD														
2	30	35	20	65	45	3	40	2	25	20	4	45	5	20

An excellent prospect for heifers! His sire has been used successfully for multiple seasons at Mulroy Farms. His dam is a solid, functional female with the reliable pedigree lines of Granite, Govenor, Mytty In Focus & Bismarck.

www.seedstockplusgenetics.com

‘Let’s Go Brandon’



AMGV: 1580278 Homo Black / Homo Polled 50GV 50AN

CE	BW	WW	YW	MK	TM	CEM	ST	DOC	CW	REA	MB	\$C	FPI	EPI
12	0.7	91	154	27	73	6	14	14	69	.87	.32			92
BREED PERCENTILE RANKING PER EPD														
65	75	3	2	20	3	65	55	15	1	4	65			15

Check out the numbers on this fellow! Exceptional WW & YW EPDs! He has plenty of body and substance to add those pounds for extra weaning weight and dollars at sale time! Sired by Schiefelbein Showman, the record setting, \$125,000 bull from the 2019 Scheifelbein Farms sale that sold to Canada. (he is deceased with limited semen) His dam is a young Purebred female that is outcross to most of the popular pedigrees!

Out of a Dam of Merit daughter of the popular Stock Options bull, Dollar Sign balances the growth, maternal and carcass numbers very well! His length of body and overall structure will make him a sire to save daughters out of!



Contact: Seedstock Plus: 877-486-1160
or email: john@seedstockplus.com

Terms & Conditions

Terms: Terms of the sale are cash or personal check unless satisfactory credit arrangements have been made with the seller previous to the sale.

Bidding: All animals sell to the highest bidder. Any disputes or challenges regarding bids shall be settled by the auctioneer and his decision shall be final. Mailed or telephoned bids will be handled with the strictest confidence.

Registrations & Transfers: Each animal which is offered and sold has a certificate of registry available at the time of sale. The seller is responsible for the proper transfer of the certificate to the purchaser including full payment of transfer fees.

Purchaser's Risk: Each animal becomes the property of and therefore is also the risk of the purchaser as soon as it is sold.

Announcements: Any errors or changes in information contained in the catalog will be announced from the auction block. Such announcements shall take precedence over information contained herein.

Rights and Obligations: The above terms and conditions of sale constitute a contract between the buyer and seller of each animal and shall be equally binding to both. Animals resold following purchase in this sale shall constitute a separate transaction and the rights and obligations of the parties connected thereto are not covered by the above terms and conditions of this sale. Neither the host farm, auctioneers, nor any other person connected with the management or conduct of this sale assumes any liability, legal or otherwise, except as set forth above.

DEFINITIONS AND GUARANTEES

HORNED: An animal with a horn growth affixed to the skull that has or has not been removed.

POLLED/SCURRED: An animal with rudimentary horn growth that will not develop into a horn. The rudimentary horn growth may or may not become affixed to the skull at an older age.

POLLED: An animal with absence of horn growth (An animal can have scurs and still be genetically polled)

DOUBLE POLLED: An animal whose sire and dam are both polled or scurred, this gives this animal the possibility of being homozygous polled for the polled trait but it is not yet proven so.

HOMOZYGOUS POLLED: An animal who carries two polled genes, and will produce polled or polled/scurred offspring with every mating.

DILUTER GENE: A gene carried by some Gelbvieh cattle that affects the degree of red color in the hair coat. Bulls carrying this gene can produce gray calves when mated to black cows or cream colored calves when mated to each other.

DILUTER FREE: All Red Angus are free of the diluter gene as are all red Gelbvieh cattle resulting from a double black mating. Red Gelbviehs can also be proven diluter-free by mating to black cows and producing all red or black offspring

DOUBLE BLACK: An animal whose sire and dam are both black, which give the animal the possibility of being homozygous for the black trait but its not yet proven so.

HOMOZYGOUS BLACK: An animal who carries two black genes and has been proven by mating or genetically tested to produce black or black factor (gray when mated with diluter-based genetics) calves with every mating.

For more information contact: Seedstock Plus Toll Free at: 877-486-1160 or John on his cell: 660-734-1165 or visit the website: www.seedstockplus.com

Seedstock Plus Sale Calendar

North Missouri Bull Sale

February 22, 2025

125 Balancer & Gelbvieh Bulls - all Black!
Kingsville Livestock, Kingsville, MO

Arkansas Bull Sale

March 1, 2025

75 Angus, Brangus, Gelbvieh
& Balancer Bulls - Red & Black!
Hope Livestock Auction, Hope, AR

Red Reward Bull & Heifer Sale

March 8, 2025

50 Red Gelbvieh & Balancer Bulls
Plus! Red Comm & Registered Females
Wheeler Livestock, Osceola, MO

South Missouri Bull & Female Sale

March 22, 2025

125 Balancer & Gelbvieh Bulls - all Black!
Plus! Black Comm & Registered Open Heifers
Joplin Regional Stockyards, Carthage, MO

Keep Your Mind in the Market

Volatile commodity markets and the speed at which narrow windows of opportunity to manage risk open and close underscore the value of keeping your mind engaged in the market, no matter how frequently you trade cattle.

That's why Seedstock Plus continues to offer as a free service to its customers and members a complimentary subscription to the daily Cattle Current electronic newsletter. It offers a convenient snapshot of the previous day's cash and futures markets for calves, feeders, fed cattle and related commodities. You'll also find pertinent market-related news.

If you're not receiving Cattle Current, or if you'd like to receive it at more than one e-mail address, please let us know and we'll add you to the list. You can send your request to wes@cattlecurrent.com.

Working Together for Industry Excellence



Seedstock Plus

18864 Kepler Dr.

St. Catharine, MO 64628

RETURN SERVICE REQUESTED

FIRST CLASS MAIL

